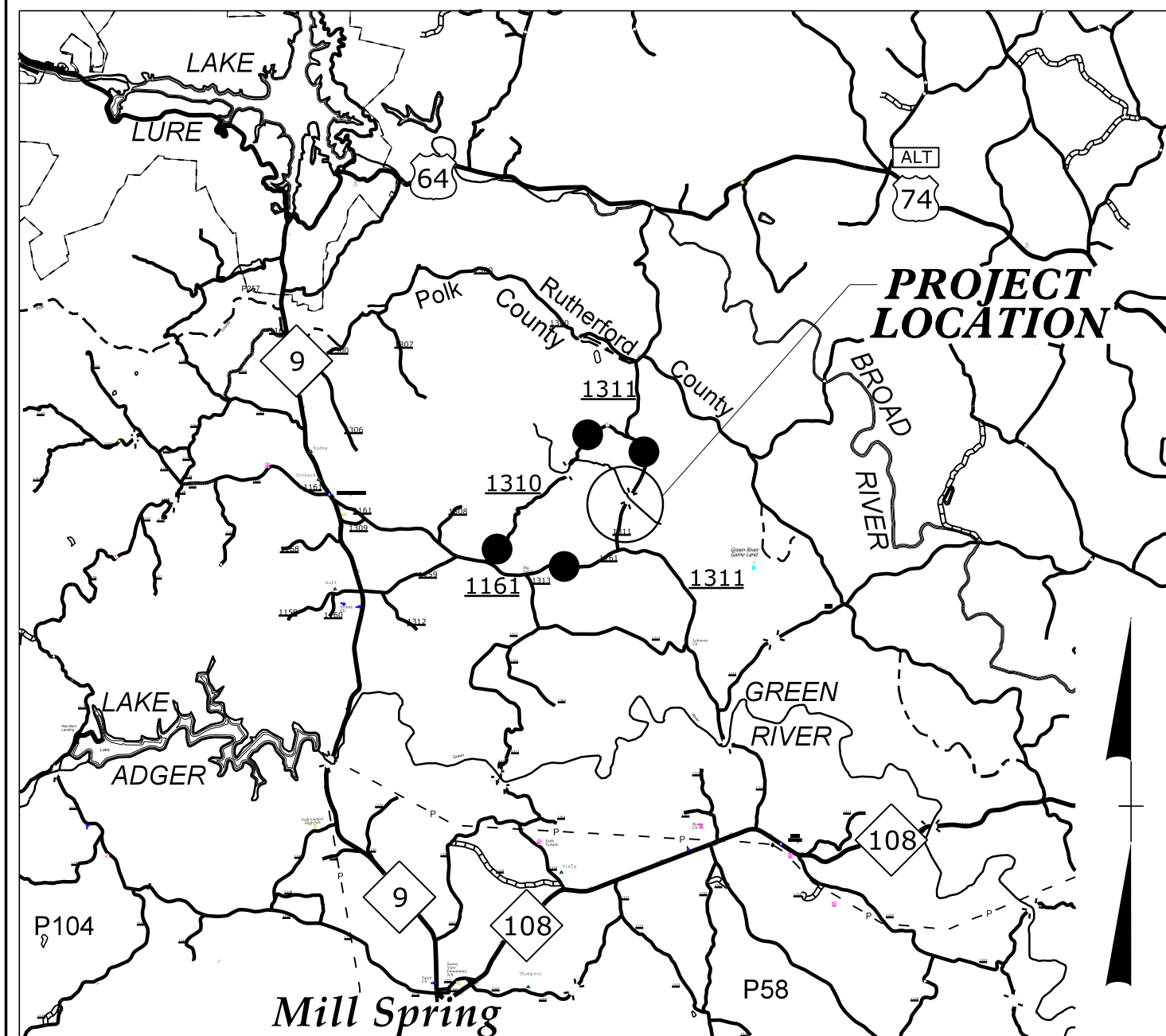


**This electronic collection of documents is provided
for the convenience of the user
and is Not a Certified Document –**

**The documents contained herein were originally issued
and sealed by the individuals whose names and license
numbers appear on each page, on the dates appearing
with their signature on that page.**

**This file or an individual page
shall not be considered a certified document.**

TIP PROJECT: B-5407



VICINITY MAP

●●●●● OFF-SITE DETOUR

STATE OF NORTH CAROLINA
DIVISION OF HIGHWAYS

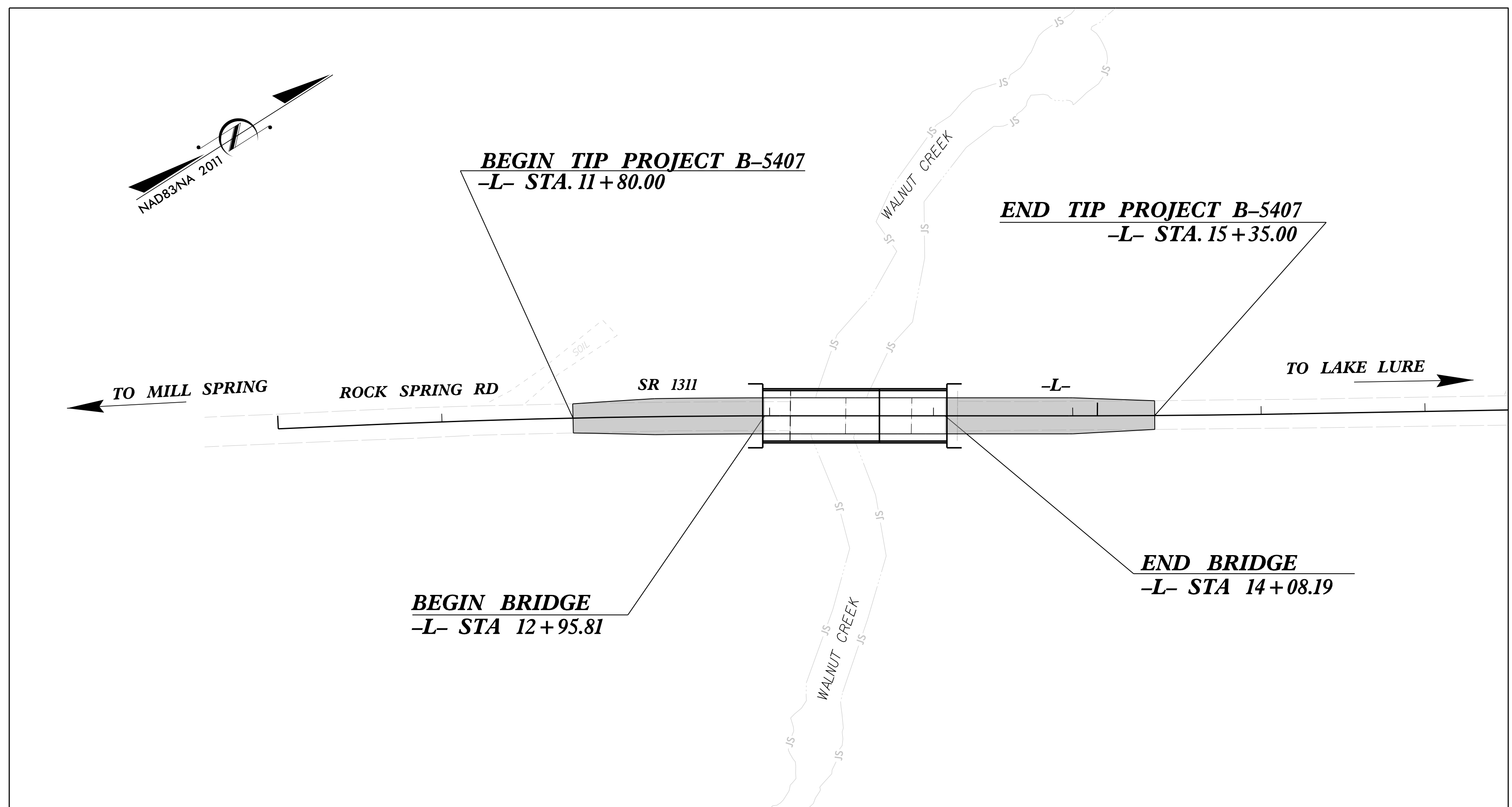
**UTILITIES BY OTHERS PLANS
POLK COUNTY**

**LOCATION: REPLACE BRIDGE NO. 34 OVER WALNUT CREEK
ON SR 1311 (ROCK SPRING ROAD)**

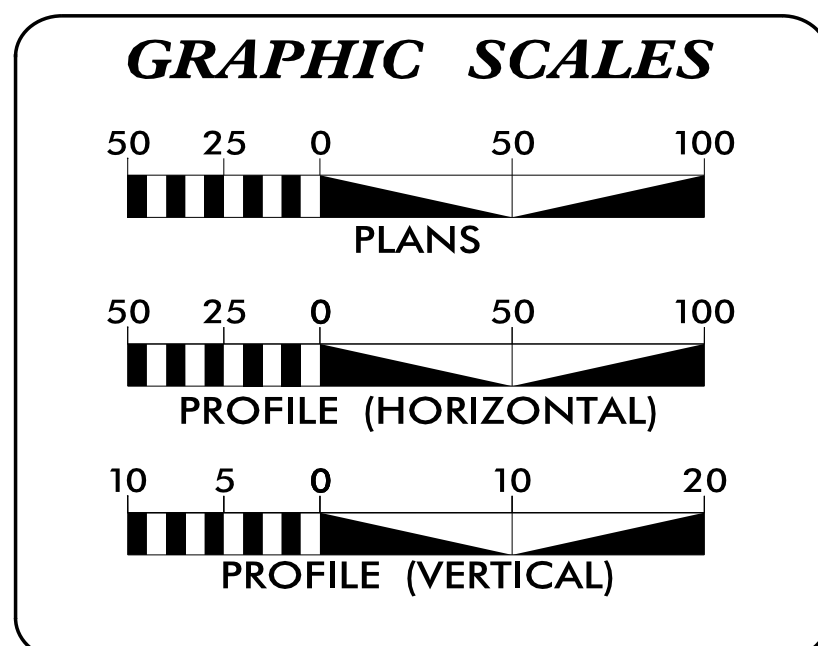
TYPE OF WORK: TELEPHONE ABANDONMENT

T.I.P. NO.	SHEET NO.
B-5407	UO-1

NOTE:
ALL UTILITY WORK SHOWN ON THIS SHEET IS DONE BY OTHERS.
NO PAYMENT WILL BE MADE TO THE CONTRACTOR FOR UTILITY WORK SHOWN ON THIS SHEET.



THIS IS NOT A CONTROL OF ACCESS PROJECT
THIS PROJECT IS NOT WITHIN ANY MUNICIPAL BOUNDARY
CLEARING ON THIS PROJECT SHALL BE PERFORMED TO THE LIMITS ESTABLISHED BY METHOD II



INDEX OF SHEETS

SHEET NO.:	DESCRIPTION:
UO-1	TITLE SHEET
UO-2	UBO PLAN SHEET

UTILITY OWNERS WITH CONFLICTS

(A) POWER (DISTRIBUTION) - RUTHERFORD EMC
(B) COMMUNICATIONS - AT&T

PREPARED IN THE OFFICE OF:

Michael Baker
INTERNATIONAL

Michael Baker Engineering, Inc.
8000 Regency Parkway, Suite 600
Cary, NC 27518
919-463-5488

Daniel Oliver	UTILITY PROJECT MANAGER
Daniel Oliver	PROJECT UTILITY COORDINATOR
Christina Newsome	PROJECT UTILITY TECHNICIAN

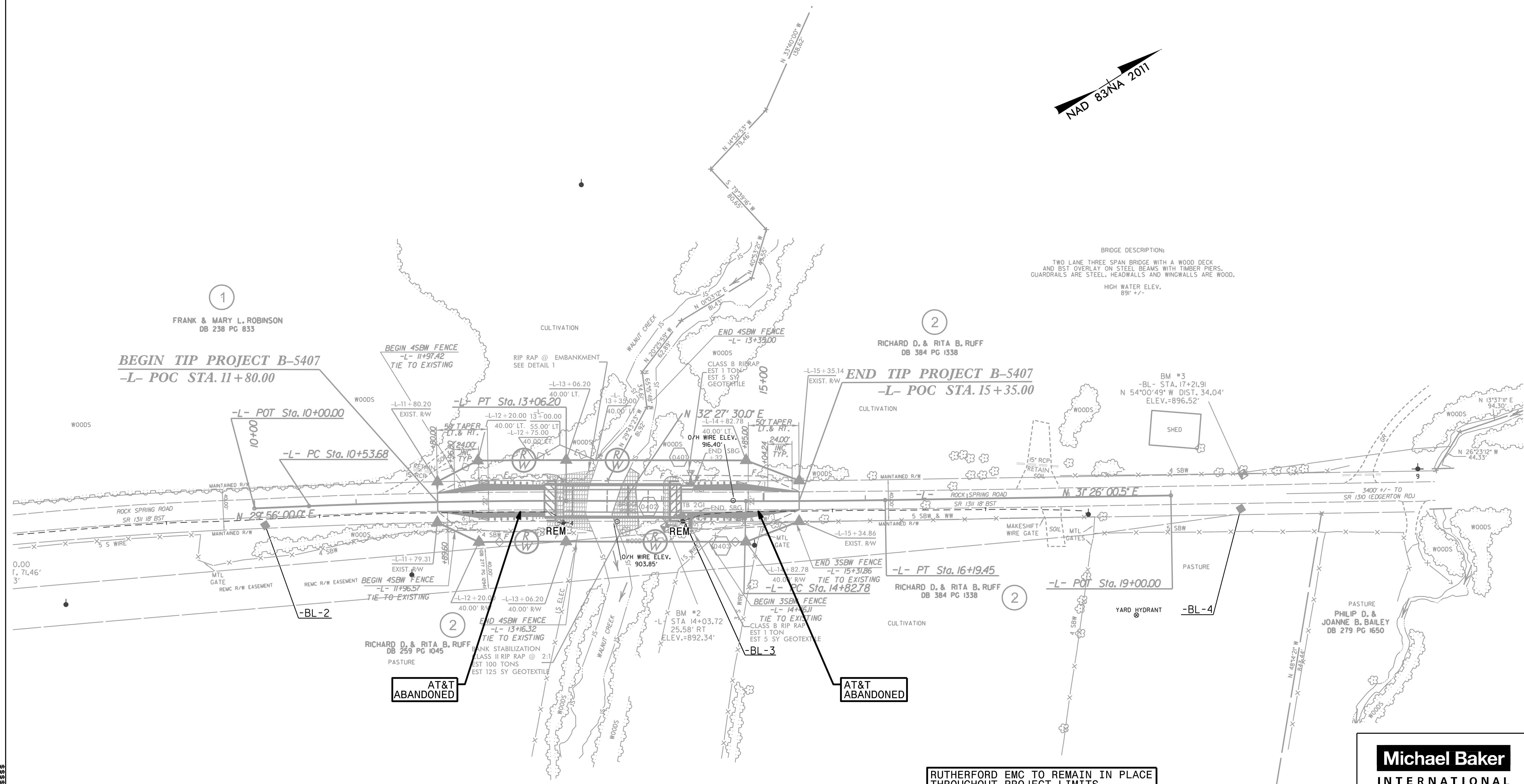
**DIVISION OF HIGHWAYS
UTILITIES UNIT**
1555 MAIL SERVICES CENTER
RALEIGH NC 27699-1555
PHONE (919) 707-6690
FAX (919) 250-4151

Michael Bright	UTILITIES REGIONAL ENGINEER
Michael Bright	UTILITIES ENGINEER
Amy Dupree	UTILITIES AREA COORDINATOR
Greg Sealy	UTILITIES COORDINATOR

UTILITIES BY OTHERS

NOTE:
 ALL UTILITY WORK SHOWN ON THIS SHEET WILL BE DONE BY OTHERS. NO PAYMENT WILL BE MADE TO THE CONTRACTOR FOR UTILITY WORK SHOWN ON THIS SHEET.

5/14/99



BRIDGE DESCRIPTION:
 TWO LANE THREE SPAN BRIDGE WITH A WOOD DECK AND BST OVERLAY ON STEEL BEAMS WITH TAMBER PIERS. GUARDRAILS ARE STEEL. HEADWALLS AND WINGWALLS ARE WOOD.
 HIGH WATER ELEV. 891 +/-

1
 FRANK & MARY L. ROBINSON
 DB 238 PG 833
BEGIN TIP PROJECT B-5407
 -L- POC STA. 11+80.00

2
 RICHARD D. & RITA B. RUFF
 DB 384 PG 1338
END TIP PROJECT B-5407
 -L- POC STA. 15+35.00

2
 RICHARD D. & RITA B. RUFF
 DB 384 PG 1338

PHILIP D. & JOANNE B. BAILEY
 DB 279 PG 1650

AT&T
 ABANDONED

AT&T
 ABANDONED

RUTHERFORD EMC TO REMAIN IN PLACE
 THROUGHOUT PROJECT LIMITS

Michael Baker
INTERNATIONAL
 Michael Baker Engineering, Inc.
 6000 Regency Parkway, Suite 600
 Cary, NC 27518
 919-463-5488