

LOCATION SKETCH

INFORMATION INDICATED ON THE LOCATION SKETCH SHALL BE CONSIDERED GENERAL INFORMATION ONLY. THE CONTRACTOR SHALL CONFIRM, THROUGH OTHER SOURCES, SPECIFIC INFORMATION REGARDING BRIDGES, ROADWAYS, UTILITIES, THE SURROUNDING AREA, AND ANY OTHER ASPECTS THAT MAY BE NECESSARY TO PERFORM AND COMPLETE THE PROJECT.

NOTES

- EXISTING DIMENSIONS AND BRIDGE CONDITION ARE FROM BEST INFORMATION AVAILABLE. THE CONTRACTOR SHALL FIELD VERIFY THE INFORMATION SHOWN ON THE PLANS AND NOTIFY THE ENGINEER IF ACTUAL DIMENSIONS AND CONDITIONS DIFFER.
- EXISTING JOINTS AND DECK DRAINS SHALL BE SEALED PRIOR TO BEGINNING SURFACE PREPARATION OF BRIDGE DECKS.
- IT IS THE CONTRACTOR'S RESPONSIBILITY TO FOLLOW ALL STATE AND FEDERAL SAFETY REQUIREMENTS.
- FOR CONTROL OF TRAFFIC AND LIMITS ON PHASING OF CONSTRUCTION, SEE TRANSPORTATION MANAGEMENT PLAN SHEETS.
- LONGITUDINAL CONSTRUCTION JOINTS OF OVERLAYS SHALL BE LOCATED ALONG THE CENTERLINE OR EDGE OF TRAVEL LANES.
- FOR SUBMITTAL OF WORKING DRAWINGS, SEE SPECIAL PROVISIONS.
- FOR FALSEWORK AND FORMWORK, SEE SPECIAL PROVISIONS.
- FOR CRANE SAFETY, SEE SPECIAL PROVISIONS.
- FOR GROUT FOR STRUCTURES, SEE SPECIAL PROVISIONS.
- FOR POLYESTER POLYMER CONCRETE OVERLAY, SEE SPECIAL PROVISIONS.
- FOR CONCRETE DECK REPAIR FOR PPC, SEE SPECIAL PROVISIONS.
- FOR FOAM JOINT SEALS, SEE SPECIAL PROVISIONS.
- FOR PAINTING EXISTING STRUCTURE, SEE SPECIAL PROVISIONS.
- FOR SCARIFYING BRIDGE DECK, SHOTBLASTING BRIDGE DECK, AND CLASS II SURFACE PREPARATION, SEE OVERLAY SURFACE PREPARATION FOR POLYESTER POLYMER CONCRETE SPECIAL PROVISION.
- THE EXISTING BRIDGE DECK SHALL BE REPAIRED AS SHOWN ON THE PLANS OR AS DETERMINED BY THE ENGINEER AFTER SCARIFICATION AND PRIOR TO BRIDGE DECK SHOTBLAST AND APPLICATION OF THE PPC OVERLAY. UNLESS OTHERWISE APPROVED, SUCH LOCATIONS SHALL BE REPAIRED WITH PPC.
- FOR CONCRETE DECK REPAIR FOR PPC OVERLAY, PPC MATERIALS, AND PLACING & FINISHING PPC OVERLAY, SEE POLYESTER POLYMER CONCRETE BRIDGE DECK OVERLAY SPECIAL PROVISION.
- FOR BRIDGE JACKING, SEE SPECIAL PROVISIONS.
- FOR CONCRETE REPAIRS, SEE SPECIAL PROVISIONS.
- FOR EPOXY COATING AND DEBRIS REMOVAL, SEE SPECIAL PROVISIONS.
- FOR PAINTING CONTAINMENT, POLLUTION CONTROL, AND CLEANING & REPAINTING OF BRIDGE, SEE PAINTING EXISTING STRUCTURE SPECIAL PROVISION.

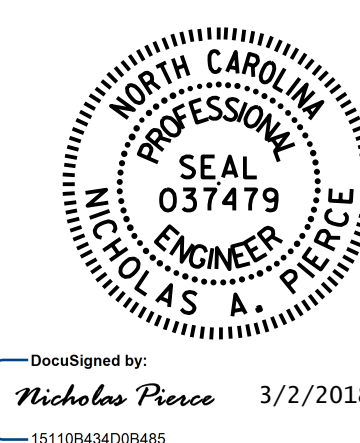
TOTAL BILL OF MATERIAL

MECKLENBURG COUNTY BRIDGE NO.	GROOVING BRIDGE FLOORS	POLLUTION CONTROL	CLASS II SURFACE PREPARATION	CONCRETE REPAIRS	FOAM JOINT SEALS	CLEANING AND REPAINTING OF BRIDGE	PAINTING CONTAINMENT FOR BRIDGE	PPC MATERIALS	EPOXY COATING	CONCRETE DECK REPAIR FOR PPC OVERLAY	PLACING & FINISHING PPC OVERLAY	SCARIFYING BRIDGE DECK	SHOTBLASTING BRIDGE DECK	TYPE I BRIDGE JACKING FOR BRIDGE
	SO. FT.	LUMP SUM	SO. YDS.	CU. FT.	LUMP SUM	LUMP SUM	LUMP SUM	CU. YDS.	SO. FT.	SO. YDS.	SO. YDS.	SO. YDS.	SO. YDS.	EA.
207	9476	LUMP SUM	22.6	-	LUMP SUM	LUMP SUM	LUMP SUM	39.4	607	22.6	1133	1133	1133	-
213	11907	LUMP SUM	28.0	-	LUMP SUM	LUMP SUM	LUMP SUM	48.7	738	28.0	1404	1404	1404	-
215	8237	-	* 2.0	16.2	LUMP SUM	-	-	37.0	773	* 2.0	1063	1063	1063	3
TOTAL	29620	LUMP SUM	52.6	16.2	LUMP SUM	LUMP SUM	LUMP SUM	125.1	2118	52.6	3600	3600	3600	3

*CLASS II SURFACE PREPARATION AND CONCRETE REPAIR FOR PPC OVERLAY ARE NOT ANTICIPATED. A TOKEN PAY ITEM IS INDICATED FOR PRICING PURPOSES IN THE EVENT UNANTICIPATED CLASS II AREAS ARE ENCOUNTERED.

PROJECT NO. I-5825
MECKLENBURG COUNTY
 BRIDGE NO. 207, 213, 215

SHEET 4 OF 4



STATE OF NORTH CAROLINA
 DEPARTMENT OF TRANSPORTATION
 RALEIGH

GENERAL DRAWING

BRIDGE NO. 207, 213
 AND 215 ON I-77

DRAWN BY : E. K. POPE DATE : 1/18
 CHECKED BY : N. A. PIERCE DATE : 1/18

REVISIONS						SHEET NO.
NO.	BY:	DATE:	NO.	BY:	DATE:	S-4
1			3			TOTAL SHEETS
2			4			31

DOCUMENT NOT CONSIDERED FINAL UNLESS ALL SIGNATURES COMPLETED