

**This electronic collection of documents is provided
for the convenience of the user
and is Not a Certified Document –**

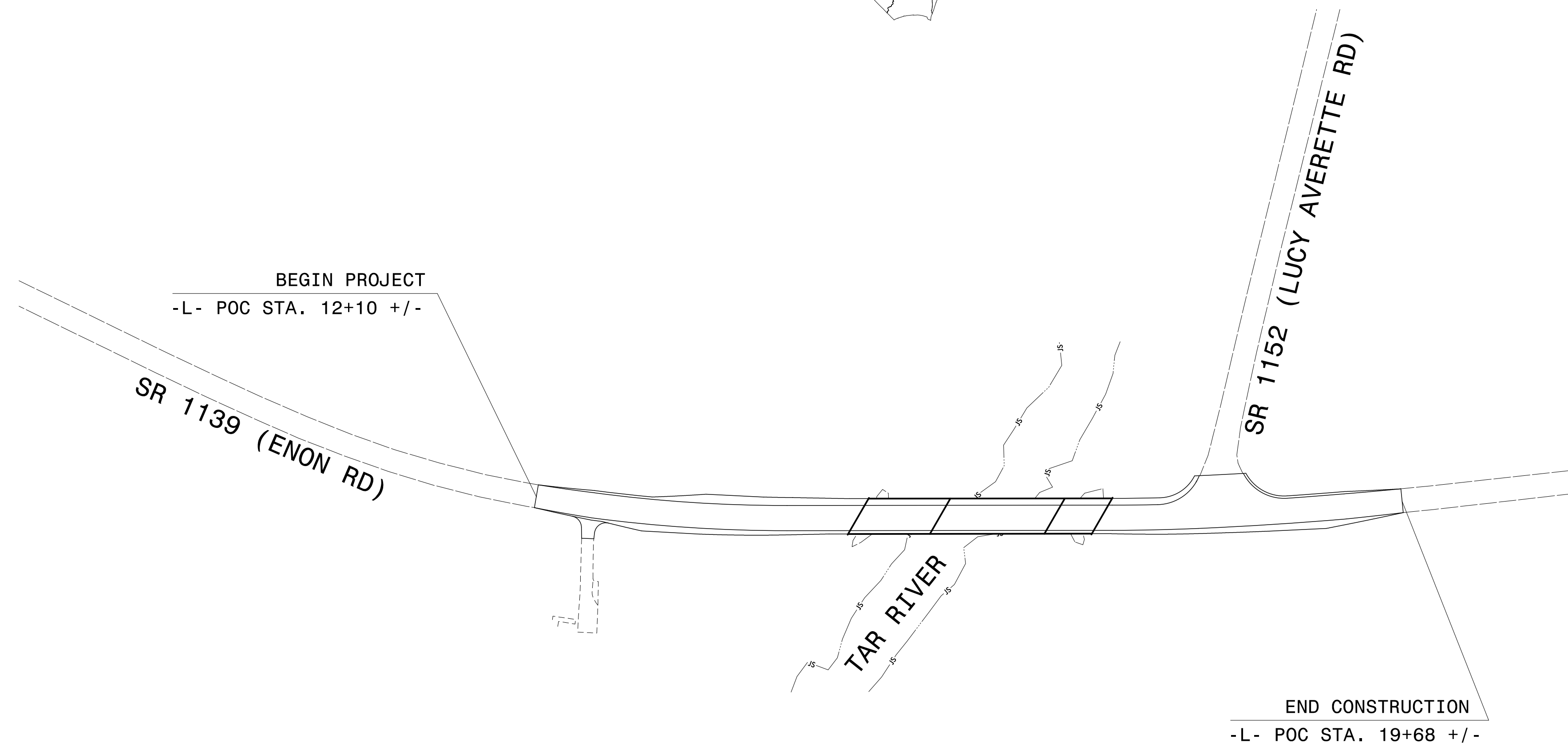
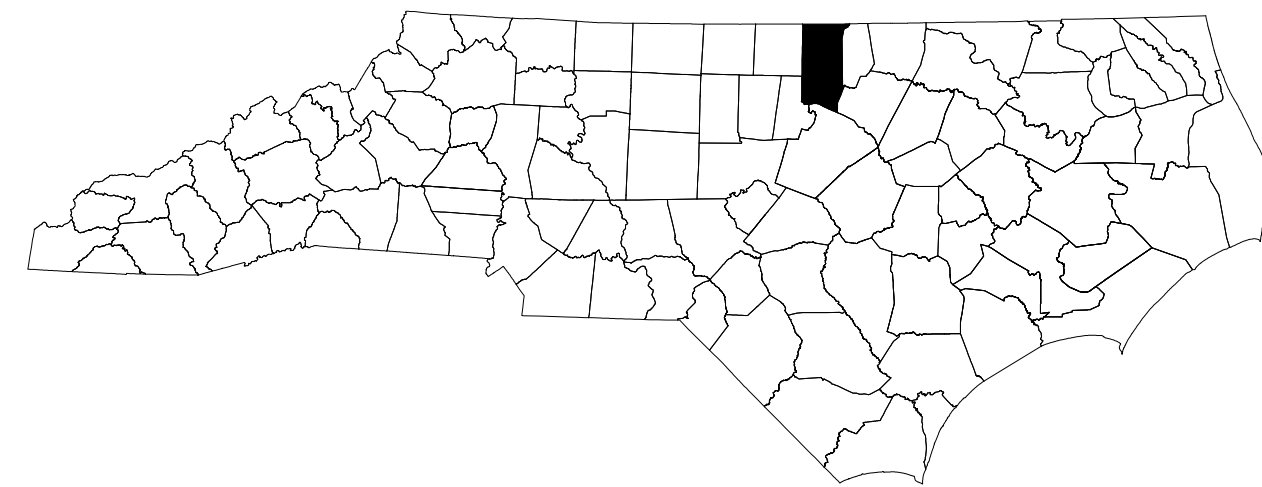
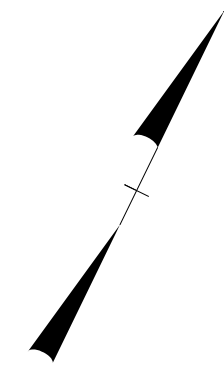
**The documents contained herein were originally issued
and sealed by the individuals whose names and license
numbers appear on each page, on the dates appearing
with their signature on that page.**

**This file or an individual page
shall not be considered a certified document.**

STATE OF NORTH CAROLINA
DIVISION OF HIGHWAYS

TRANSPORTATION MANAGEMENT PLAN

GRANVILLE COUNTY



LOCATION: REPLACE BRIDGE NO. 96 OVER TAR RIVER ON SR 1139 (ENON RD)

TYPE OF WORK: GRADING, PAVING, DRAINAGE, AND STRUCTURE

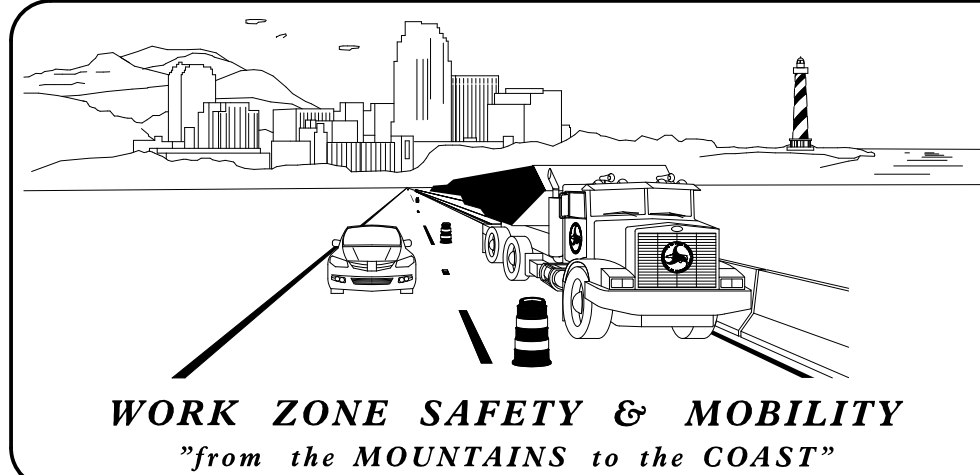
INDEX OF SHEETS

SHEET NO.	TITLE
TMP-1	TITLE SHEET, VICINITY MAP AND INDEX OF SHEETS
TMP-2	ROADWAY STANDARD DRAWINGS AND LEGEND
TMP-3	GENERAL NOTES AND WRITTEN PHASING
TMP-4	OFFSITE DETOUR ROUTE SIGNING
TMP-5	SPECIAL SIGN DESIGN

SHEET NO.

TMP-1

PROJECT: B-5320



PLANS PREPARED BY:

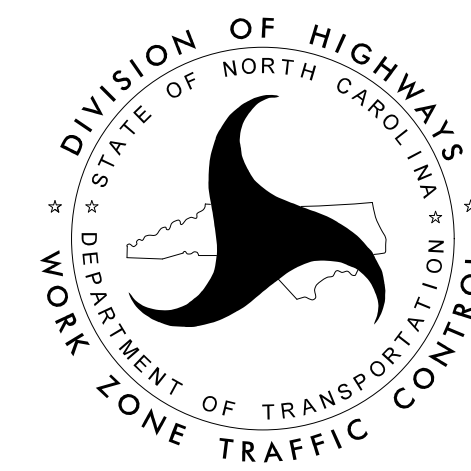
JASON GORRIE, PE

NCDOT CONTACTS:

PROJECT ENGINEER

MIKE STEELMAN

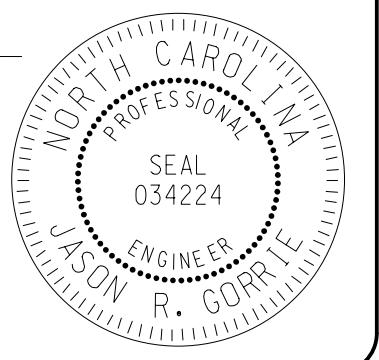
PROJECT DESIGN ENGINEER



APPROVED: *Jason R. Gorrie*

DATE: 2/13/18

SEAL





PROJ. REFERENCE NO.	SHEET NO.
B-5320	TMP-2

ROADWAY STANDARD DRAWINGS

THE FOLLOWING ROADWAY STANDARDS AS SHOWN IN "ROADWAY STANDARD DRAWINGS" - PROJECT SERVICES UNIT - N.C. DEPARTMENT OF TRANSPORTATION - RALEIGH, N.C., DATED JANUARY 2018 ARE APPLICABLE TO THIS PROJECT AND BY REFERENCE HEREBY ARE CONSIDERED A PART OF THESE PLANS:

<u>STD. NO.</u>	<u>TITLE</u>
1101.03	TEMPORARY ROAD CLOSURES
1101.11	TRAFFIC CONTROL DESIGN TABLES
1110.01	STATIONARY WORK ZONE SIGNS
1145.01	BARRICADES - TYPE III

LEGEND

GENERAL

- DIRECTION OF TRAFFIC FLOW
- DIRECTION OF PEDESTRIAN TRAFFIC FLOW
- EXIST. PVMT.
- NORTH ARROW
- PROPOSED PVMT.

WORK AREA

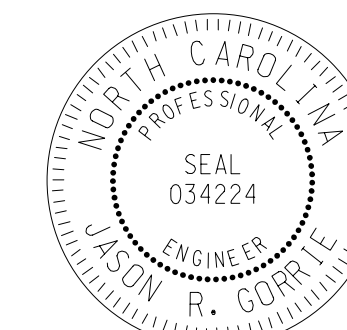
TRAFFIC CONTROL DEVICES

- BARRICADE (TYPE III)
- CONE
- DRUM SKINNY DRUM
- TEMPORARY CRASH CUSHION
- FLASHING ARROW BOARD
- FLAGGER
- LAW ENFORCEMENT
- TRUCK MOUNTED ATTENUATOR (TMA)
- CHANGEABLE MESSAGE SIGN

TEMPORARY SIGNING

- PORTABLE SIGN
- STATIONARY SIGN
- STATIONARY OR PORTABLE SIGN

APPROVED: DATE: 2/13/18



**TRANSPORTATION
MANAGEMENT PLAN
ROADWAY STANDARD
DRAWINGS & LEGEND**

GENERAL NOTES

CHANGES MAY BE REQUIRED WHEN PHYSICAL DIMENSIONS IN THE DETAIL DRAWINGS, STANDARD DETAILS, AND ROADWAY DETAILS ARE NOT ATTAINABLE TO MEET FIELD CONDITIONS OR RESULT IN DUPLICATE OR UNDESIRED OVERLAPPING OF DEVICES. MODIFICATION MAY INCLUDE: MOVING, SUPPLEMENTING, COVERING, OR REMOVAL OF DEVICES AS DIRECTED BY THE ENGINEER.

THE FOLLOWING GENERAL NOTES APPLY AT ALL TIMES FOR THE DURATION OF THE CONSTRUCTION PROJECT EXCEPT WHEN OTHERWISE NOTED IN THE PLAN OR DIRECTED BY THE ENGINEER.

TRAFFIC PATTERN ALTERATIONS

- A) NOTIFY THE ENGINEER THIRTY (30) CALENDAR DAYS PRIOR TO ANY TRAFFIC PATTERN ALTERATION.

SIGNING

- B) PROVIDE SIGNING AND DEVICES REQUIRED TO CLOSE THE ROAD ACCORDING TO THE ROADWAY STANDARD DRAWINGS AND TRAFFIC CONTROL PLANS.

PROVIDE SIGNING REQUIRED FOR THE OFF-SITE DETOUR ROUTE AS SHOWN IN THE TRAFFIC CONTROL PLANS.

- C) COVER OR REMOVE ALL SIGNS AND DEVICES REQUIRED TO CLOSE THE ROAD WHEN ROAD CLOSURE IS NOT IN OPERATION.

COVER OR REMOVE ALL SIGNS REQUIRED FOR THE OFF-SITE DETOUR WHEN THE DETOUR IS NOT IN OPERATION.

- D) ENSURE ALL NECESSARY SIGNING IS IN PLACE PRIOR TO ALTERING ANY TRAFFIC PATTERN.

TRAFFIC CONTROL DEVICES

- E) PLACE TYPE III BARRICADES, WITH "ROAD CLOSED" SIGN R11-2 ATTACHED, OF SUFFICIENT LENGTH TO CLOSE ENTIRE ROADWAY.

PHASING

STEP 1: INSTALL CMS BOARDS TO WARN MOTORISTS OF THE UPCOMING ROAD CLOSURE 7-14 DAYS PRIOR TO ROAD BEING CLOSED, AS DIRECTED BY THE ENGINEER.

STEP 2: USING ROADWAY STANDARD DRAWING NO. 1101.03, SHEETS 1 OF 9, AND SHEET TMP-4, INSTALL ROAD CLOSURE AND DETOUR SIGNS FOR ENON RD AND LUCY AVERETTE RD. COVER SIGNS UNTIL DETOUR IS READY FOR OPERATION.

STEP 3: WHEN DETOUR IS READY UNCOVER SIGNS AND CLOSE ENON RD. REMOVE CMS BOARDS ONCE ROAD IS CLOSED. CONSTRUCT STRUCTURE, ROADWAY IMPROVEMENTS AND FINAL PAVEMENT MARKINGS ALONG ENON RD.

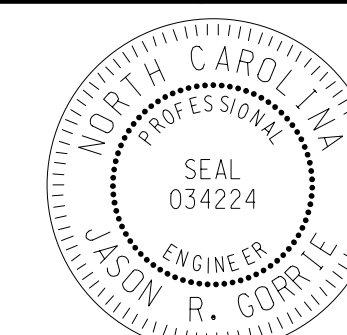
STEP 4: REMOVE ROAD CLOSURE DEVICES AND SIGNS ONCE CONSTRUCTION IS COMPLETE.

LOCAL NOTES

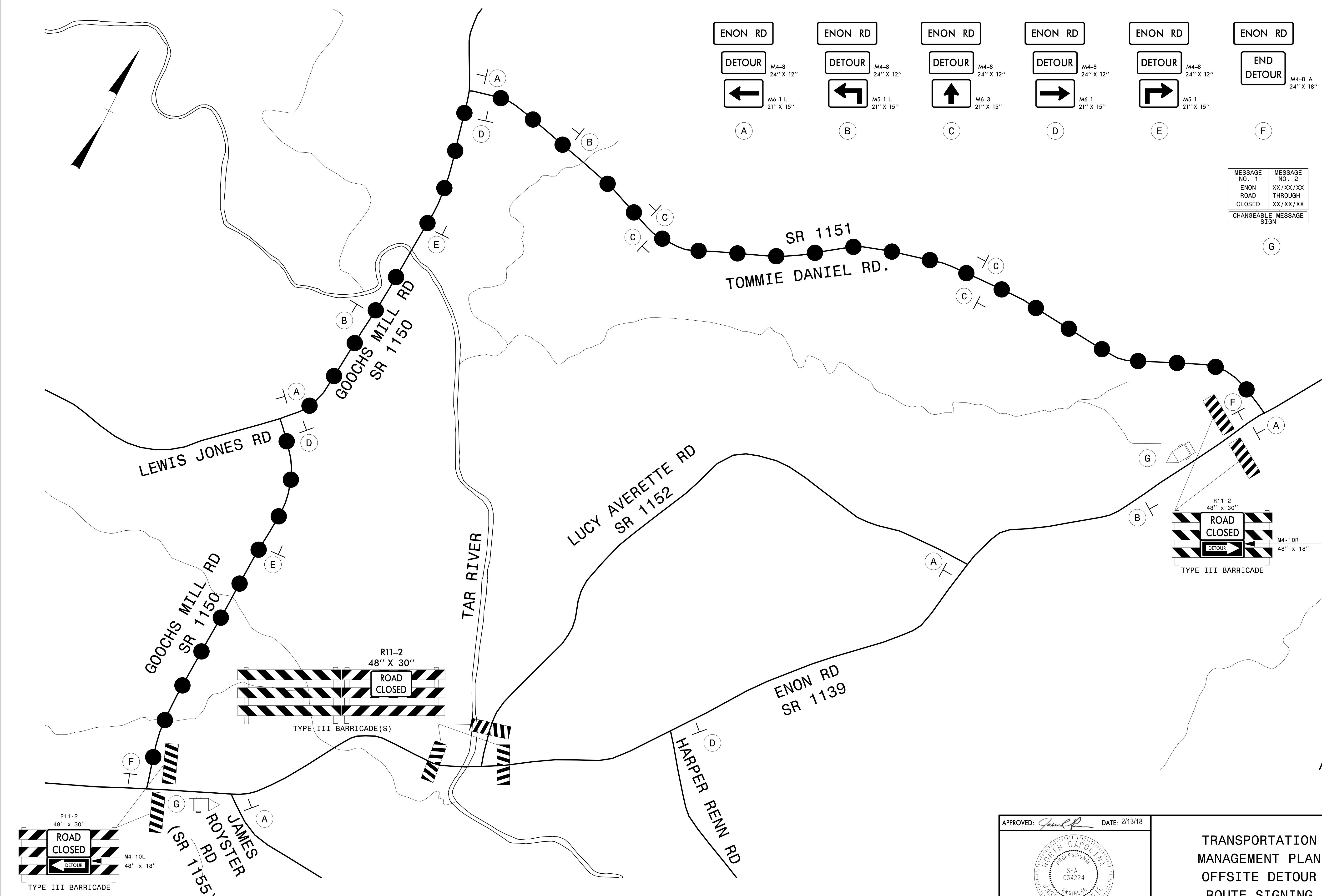
IN ORDER TO ALLOW EMERGENCY MANAGEMENT SERVICES (EMS) TIME TO PREPARE FOR ROAD CLOSURE, NCDOT WILL CONTACT THE DIRECTOR OF THE GRANVILLE COUNTY EMS AT (919) 603-1310 ONE MONTH PRIOR TO ROAD CLOSURE. IN ADDITION, THE BERA AND PROVIDENCE FIRE DEPARTMENTS WILL BE NOTIFIED ONE MONTH PRIOR TO ROAD CLOSURE.

IN ORDER TO ALLOW GRANVILLE COUNTY SCHOOLS TIME TO PREPARE FOR ROAD CLOSURE, NCDOT WILL CONTACT THE GRANVILLE COUNTY SCHOOLS TRANSPORTATION CREW LEAD AT (919) 693-6412 ONE MONTH PRIOR TO ROAD CLOSURE.

APPROVED:  DATE: 2/13/18



**TRANSPORTATION
MANAGEMENT PLAN
GENERAL NOTES AND
WRITTEN PHASING**



ENON RD	ENON RD	ENON RD	ENON RD	ENON RD	ENON RD
DETOUR	DETOUR	DETOUR	DETOUR	DETOUR	END DETOUR
M4-8 24" X 12"	M4-8 24" X 12"	M4-8 24" X 12"	M4-8 24" X 12"	M4-8 24" X 12"	M4-8 A 24" X 18"
M6-1 L 21" X 15"	M5-1 L 21" X 15"	M6-3 21" X 15"	M6-1 21" X 15"	M5-1 21" X 15"	
(A)	(B)	(C)	(D)	(E)	(F)

MESSAGE NO. 1	MESSAGE NO. 2
ENON ROAD CLOSED	XX/XX/XX THROUGH XX/XX/XX
CHANGEABLE MESSAGE SIGN	
(G)	

APPROVED: *James R. Corrie* DATE: 2/13/18

TRANSPORTATION
MANAGEMENT PLAN
OFFSITE DETOUR
ROUTE SIGNING

