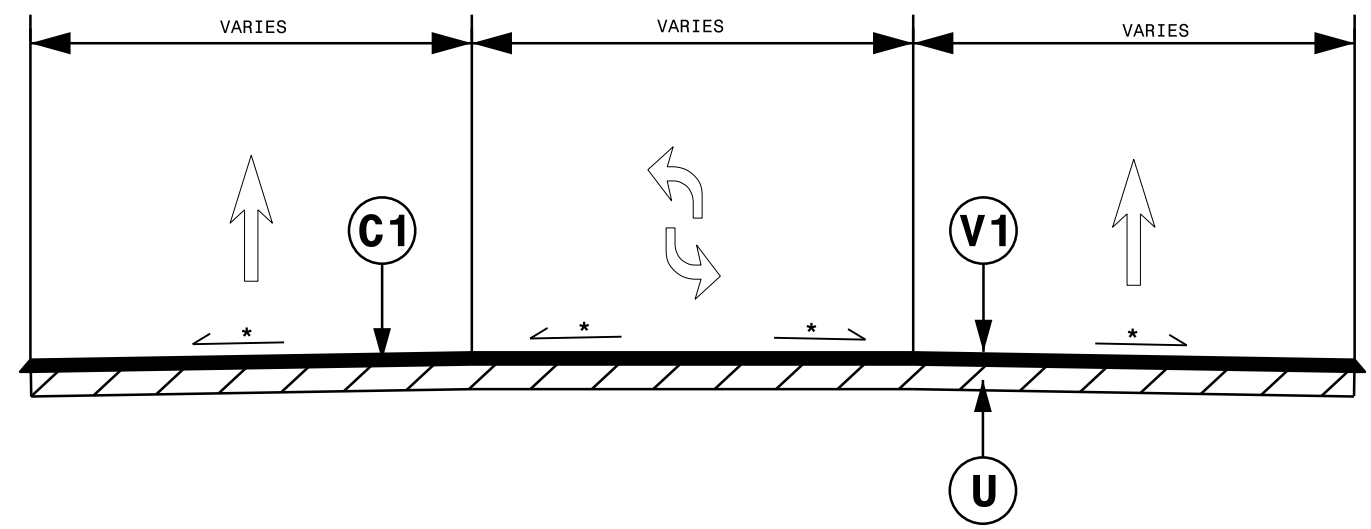


PAVEMENT SCHEDULE	
C1	PROP. APPROX. 1.5" ASPHALT CONCRETE SURFACE COURSE, TYPE S9.5C AT AN AVERAGE RATE OF 168 LBS. PER. SQ. YD.
V1	MILLING BITUMINOUS PAVEMENT. 1.5" DEPTH.
U	EXISTING PAVEMENT

NOTES:

- MILL PATCHING MUST BE COMPLETED BEFORE CLOSING THE BRIDGE.
- BRIDGE WORK MUST BE COMPLETED BEFORE MILLING AND RESURFACING.
- ALL PAVED SIDE STREETS TO BE RESURFACED TO THE ENDS OF THE RADII, OR AS DIRECTED BY THE ENGINEER.
- CONTRACTOR SHALL MILL 1.5" BELOW EXISTING PAVEMENT.
- PAVEMENT WIDTHS VARY.
- * MATCH EXISTING CROSS SLOPE.



TYPICAL SECTION #1

I3-APR-2018 09:42
 C:\Users\pjp\OneDrive\Documents\misc\discor\VBPR.25 Brunswick\updated note 200_059_15BPR.25_RDY_TYP_TYPICAL.dgn
 \$DOWSET_CURRENTSET.DWG