

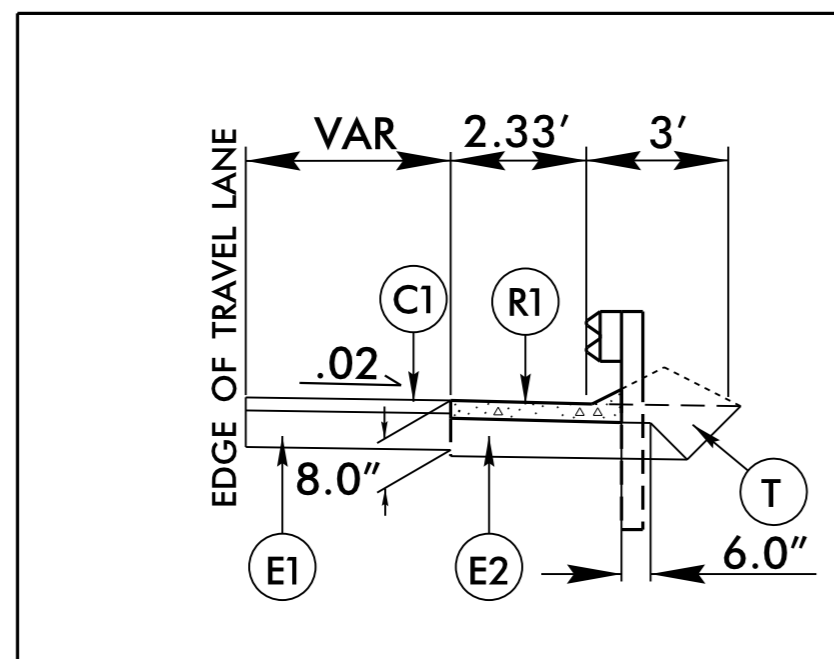
# PAVEMENT SCHEDULE

(FINAL PAVEMENT DESIGN)

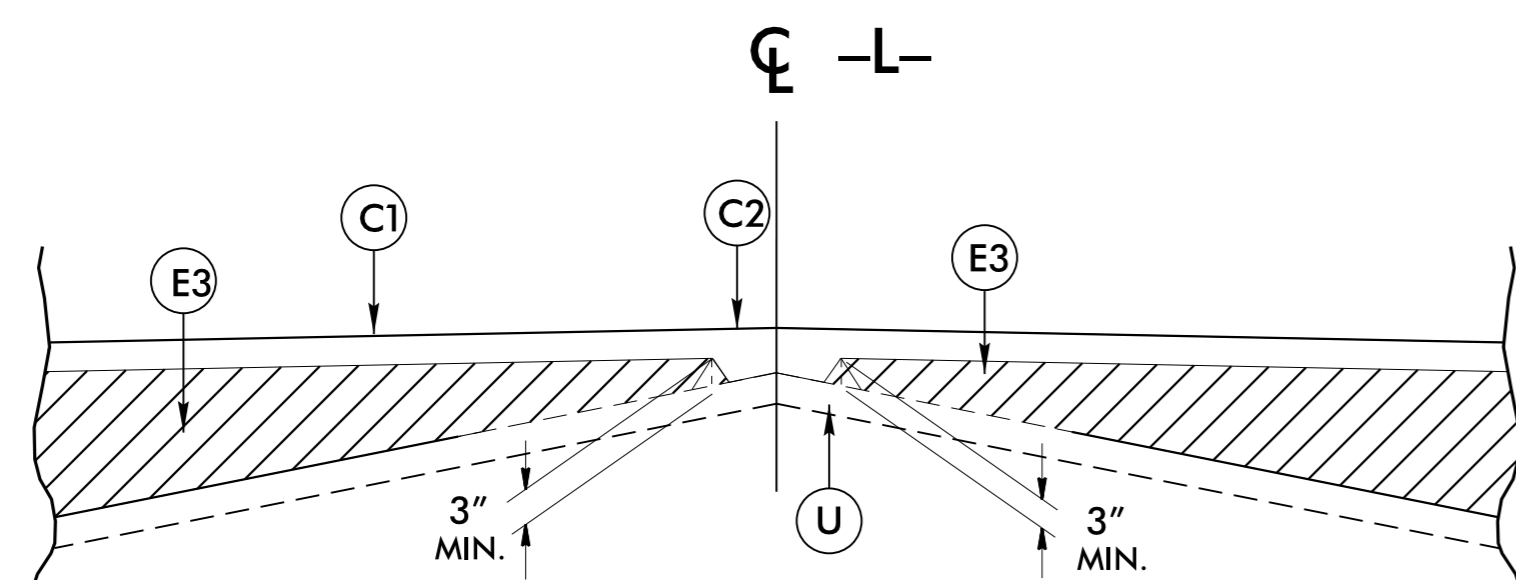
C1	PROP. APPROX. 2.5" ASPHALT CONCRETE SURFACE COURSE, TYPE SF9.5A, AT AN AVERAGE RATE OF 137.5 LBS. PER SQ. YD. IN EACH OF TWO LAYERS.
C2	PROP. VAR. DEPTH ASPHALT CONCRETE SURFACE COURSE, TYPE SF9.5A, AT AN AVERAGE RATE OF 110 LBS. PER SQ. YD. PER 1" DEPTH TO BE PLACED IN LAYERS NOT TO EXCEED 1.5" IN DEPTH.
E1	PROP. APPROX. 5.5" ASPHALT CONCRETE BASE COURSE, TYPE B25.0B, AT AN AVERAGE RATE OF 627 LBS. PER SQ. YD.
E2	PROP. APPROX. 4" ASPHALT CONCRETE BASE COURSE, TYPE B25.0B, AT AN AVERAGE RATE OF 456 LBS. PER SQ. YD.
E3	PROP. VAR. DEPTH ASPHALT CONCRETE SURFACE COURSE, TYPE B25.0B, AT AN AVERAGE RATE OF 114 LBS. PER SQ. YD. PER 1" DEPTH TO BE PLACED IN LAYERS NO LESS THAN 3" IN DEPTH OR GREATER THAN 5.5" IN DEPTH.
R1	CONCRETE SHOULDER BERM GUTTER.
T	EARTH MATERIAL.
U	EXISTING PAVEMENT.
W	VARIABLE DEPTH ASPHALT PAVEMENT (SEE STANDARD WEDGING DETAIL).

**NOTE: PAVEMENT EDGE SLOPES ARE 1:1 UNLESS SHOWN OTHERWISE.**

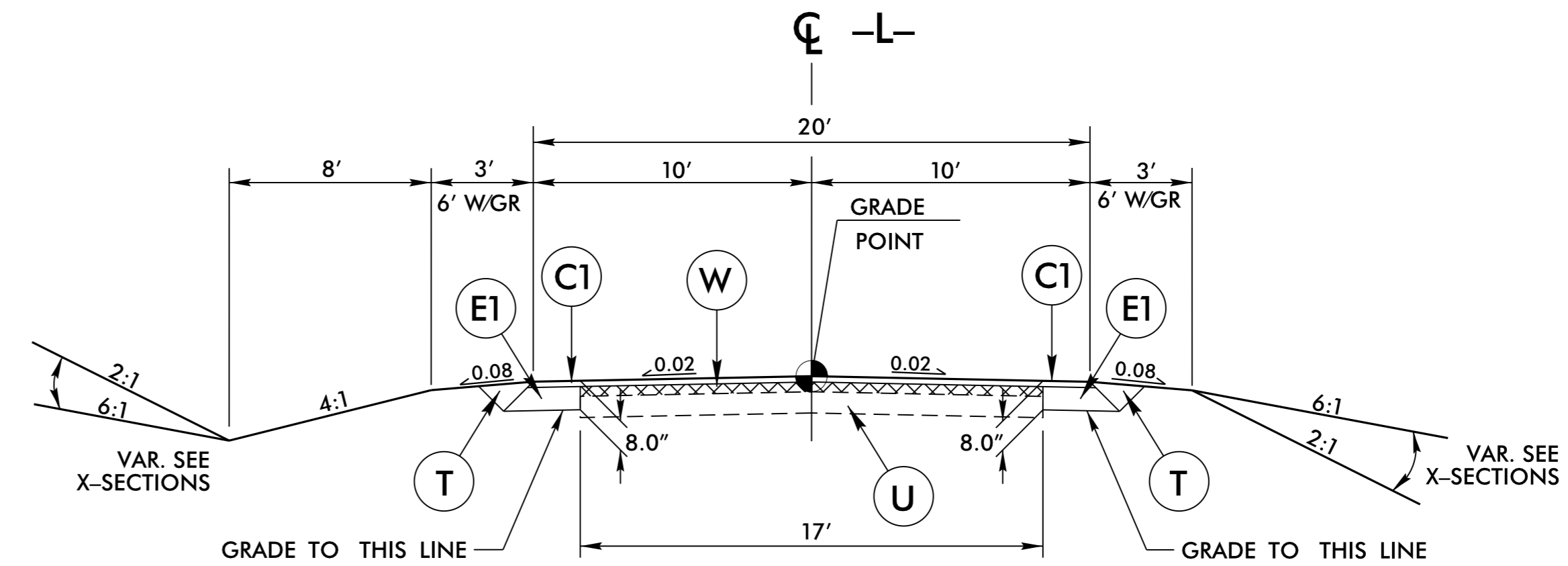
### SHOULDER BERM GUTTER DETAIL



-L- STA 19+37.19 TO -L- STA 19+80 RT

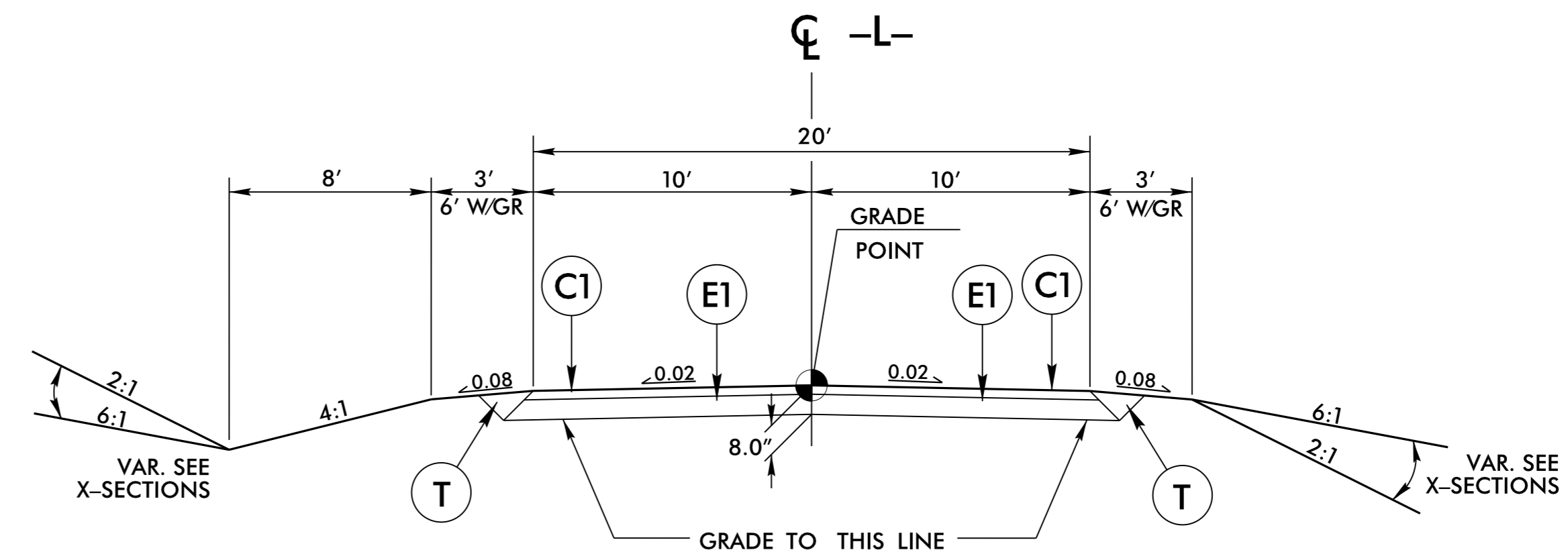


Detail Showing Method of Wedging  
USE WITH TYPICAL SECTION NO. 1



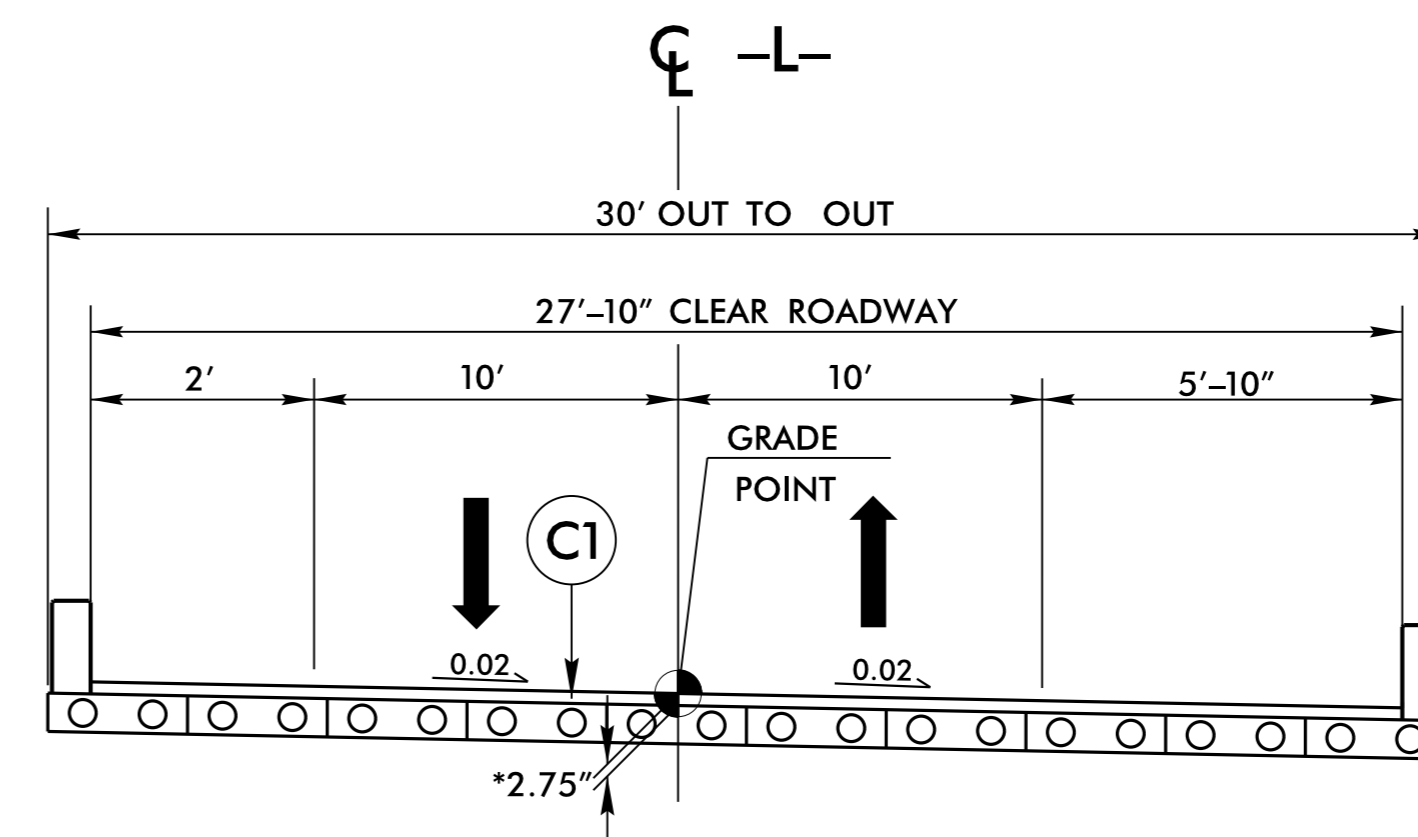
### USE TYPICAL SECTION NO. 1

-L- STA. 10+00.00 TO STA. 11+50.00  
-L- STA. 24+00.00 TO STA. 25+50.00



### USE TYPICAL SECTION NO. 2

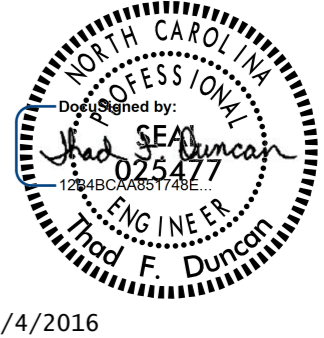
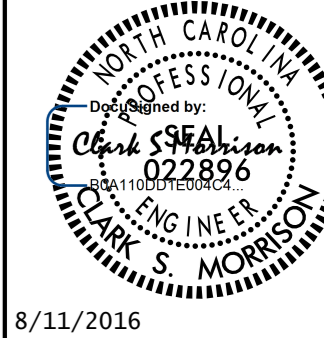
-L- STA. 11+50.00 TO STA. 17+98.81 (BEGIN BRIDGE)  
-L- STA. 19+26.19 (END BRIDGE) TO STA. 24+00.00



### TYPICAL SECTION ON BRIDGE

-L- STA. 17+98.81 TO STA. 19+26.19

**\*NOTE:**  
FOR ASPHALT WEARING SURFACE THICKNESS  
SEE STRUCTURE PLANS

PROJECT REFERENCE NO. <b>B-2506</b>	SHEET NO. <b>2A-1</b>
ROADWAY DESIGN ENGINEER 	PAVEMENT DESIGN ENGINEER 
8/4/2016	8/11/2016
<b>DOCUMENT NOT CONSIDERED FINAL UNLESS ALL SIGNATURES COMPLETED</b>	