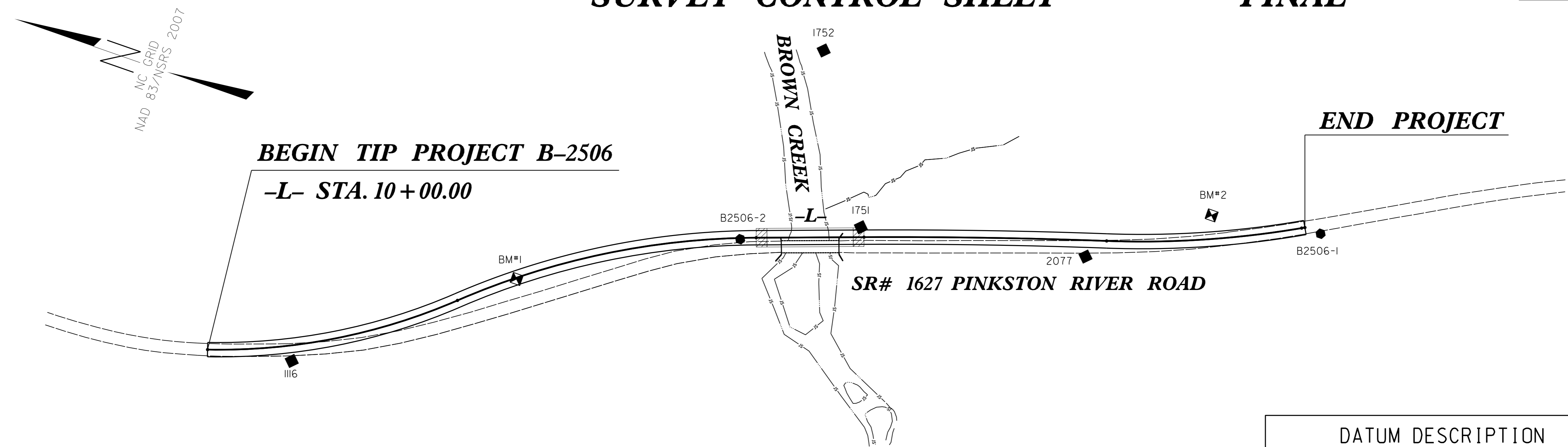


10/9/2014

# SURVEY CONTROL SHEET

# FINAL

PROJECT REFERENCE NO.	SHEET NO.
B-2506	1C-1
Location and Surveys	



BL1	POINT	DESC.	NORTH	EAST	ELEVATION	L STATION	OFFSET
	1752	REBAR	479820.8040	1685245.4020	199.17	18+80.35	260.36 LT
	EQ1751	REBAR	479690.7300	1685029.8990	201.07	19+30.84	13.76 LT
BL	POINT	DESC.	NORTH	EAST	ELEVATION	L STATION	OFFSET
	1116	REBAR	480377.3210	1684592.9900	201.67	11+14.85	21.65 RT
	2	B2506-2	479843.9240	1684958.8400	203.73	17+62.67	1.73 RT
	1751	REBAR	479690.7300	1685029.8990	201.07	19+30.84	13.76 LT
	2077	REBAR	479382.1030	1685094.3120	205.95	22+44.19	22.86 RT
	1	B2506-1	479083.6230	1685232.2070	210.89	OUTSIDE PROJECT LIMITS	

**DATUM DESCRIPTION**

THE LOCALIZED COORDINATE SYSTEM DEVELOPED FOR THIS PROJECT IS BASED ON THE STATE PLANE COORDINATES ESTABLISHED BY NCDOT FOR MONUMENT "B2506-2" WITH NAD 83/NSRS 2007 STATE PLANE GRID COORDINATES OF NORTHING: 479843.924(ft) EASTING: 1684958.840(ft) ELEVATION: 203.73(ft)

THE AVERAGE COMBINED GRID FACTOR USED ON THIS PROJECT (GROUND TO GRID) IS: 0.999873

THE N.C. LAMBERT GRID BEARING AND LOCALIZED HORIZONTAL GROUND DISTANCE FROM "B2506-2" TO -L- STATION 10+00.00 IS N 30°57'27.6" W 757.116'

ALL LINEAR DIMENSIONS ARE LOCALIZED HORIZONTAL DISTANCES VERTICAL DATUM USED IS NAVD 88

\*\*\*\*\*  
 BM1 ELEVATION = 200.86  
 N 480119 E 1684804  
 L STATION 14+45 2 RIGHT  
 BM 30" OAK  
 \*\*\*\*\*

\*\*\*\*\*  
 BM2 ELEVATION = 207.56  
 N 479235 E 1685206  
 L STATION 24+21 33 LEFT  
 BM 24" PINE  
 \*\*\*\*\*

**NOTES:**

1. THE CONTROL DATA FOR THIS PROJECT CAN BE FOUND ELECTRONICALLY BY SELECTING PROJECT CONTROL DATA AT: [HTTPS://CONNECT.NCDOT.GOV/RESOURCES/LOCATION/](https://connect.ncdot.gov/resources/location/)  
  
THE FILES TO BE FOUND ARE AS FOLLOWS:  
B2506\_LS\_CONTROL.TXT  
B2506\_LS\_LOCAL.TXT
2. SITE CALIBRATION INFORMATION HAS NOT BEEN PROVIDED FOR THIS PROJECT. IF FURTHER INFORMATION IS NEEDED, PLEASE CONTACT THE LOCATION AND SURVEYS UNIT.
3. PROJECT CONTROL ESTABLISHED USING GLOBAL POSITIONING SYSTEM, UTILIZING THE NCGS RTN SYSTEM (VRS).  
  
MONUMENTS USED OR SET FOR PROJECT CONTROL BY THE NCDOT LOCATION AND SURVEYS UNIT:  
  - INDICATES GEODETIC CONTROL MONUMENTS FOR HORIZONTAL CONTROL
  - INDICATES BASELINE MONUMENTS FOR HORIZONTAL PROJECT CONTROL
  - ✕ INDICATES BENCHMARKS FOR VERTICAL CONTROL

	L	NORTH	EAST
TYPE	STATION	NORTH	EAST
PC	10+00.00	480493.1833	1684569.3783
PRC	13+57.27	480187.3251	1684748.6697
PT	17+85.07	479823.5048	1684968.1689
PC	19+35.07	479682.1448	1685018.3420
PRC	22+72.93	479361.4736	1685124.6456
PT	25+45.46	479111.0586	1685230.9924
POT	25+50.00	479107.0871	1685233.1830

NOTE: DRAWING NOT TO SCALE

20 JUN-2016 15:58 10-2506-1s-1C-1.dgn