

**This electronic collection of documents is provided
for the convenience of the user
and is Not a Certified Document –**

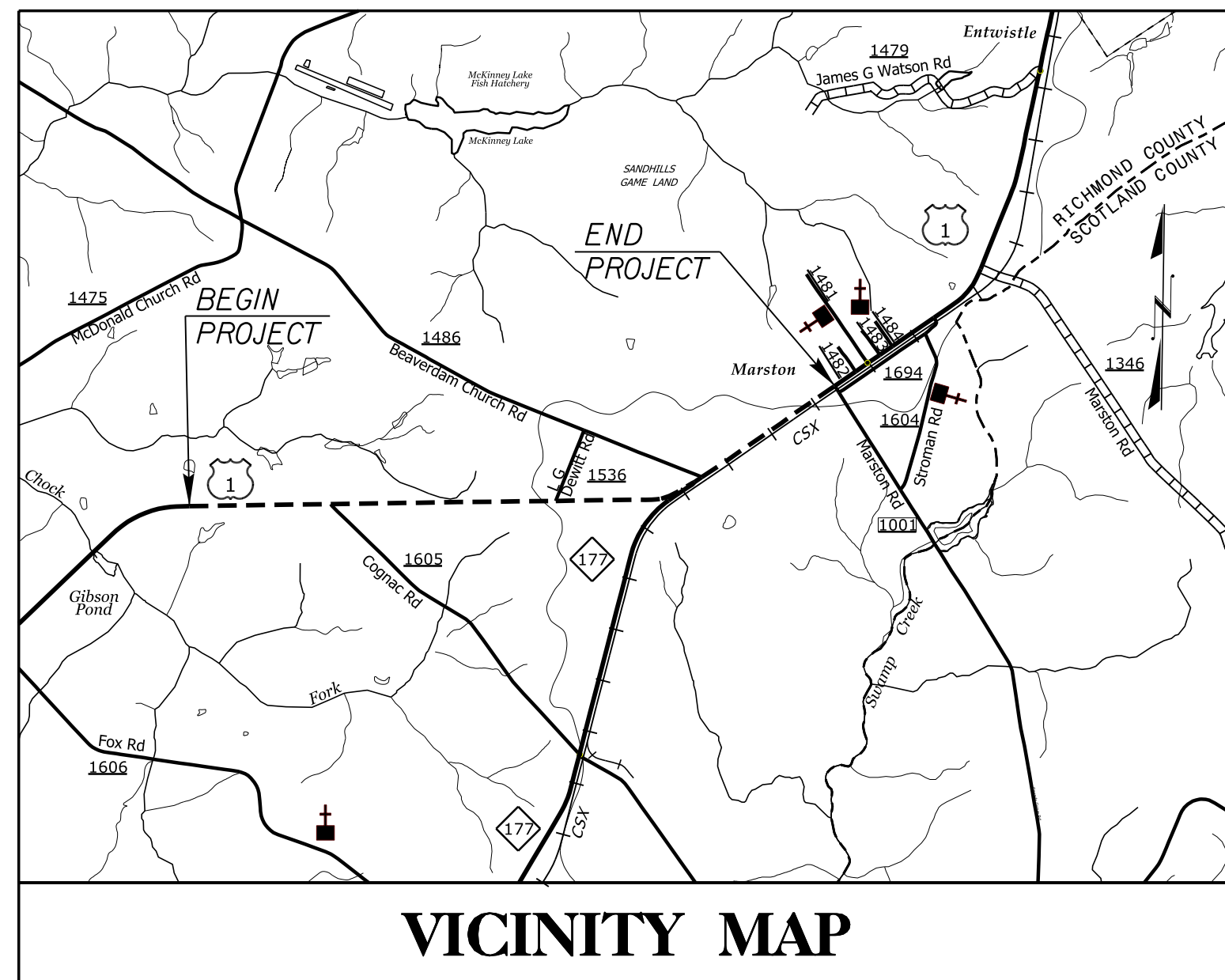
**The documents contained herein were originally issued
and sealed by the individuals whose names and license
numbers appear on each page, on the dates appearing
with their signature on that page.**

**This file or an individual page
shall not be considered a certified document.**

TIP PROJECT: R-2501C

09/08/99

05-DEC-2017 10:21 Y:\Projects\NCDOT\Utility On-Call Contract\R-2501C\Phase II\Richmond County\Utilities\R2501C_ut_tsh_U01_psh.dgn



STATE OF NORTH CAROLINA
DIVISION OF HIGHWAYS

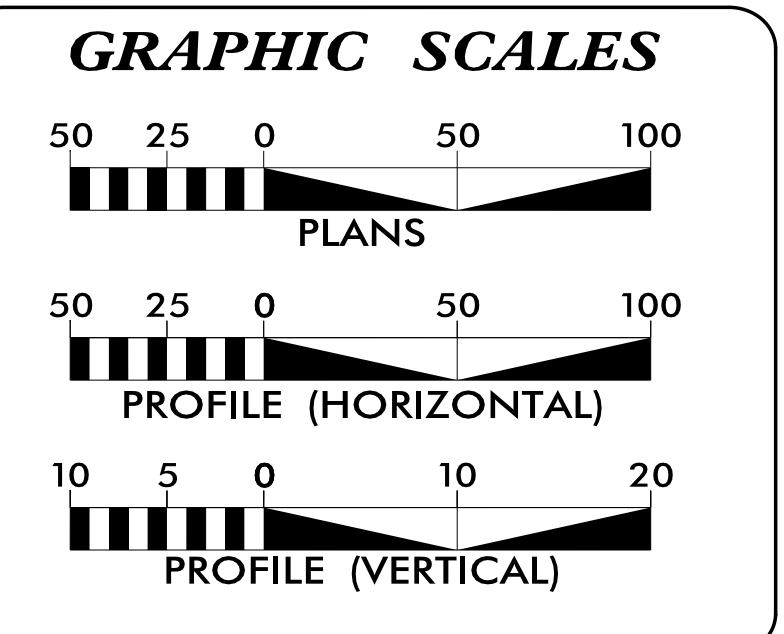
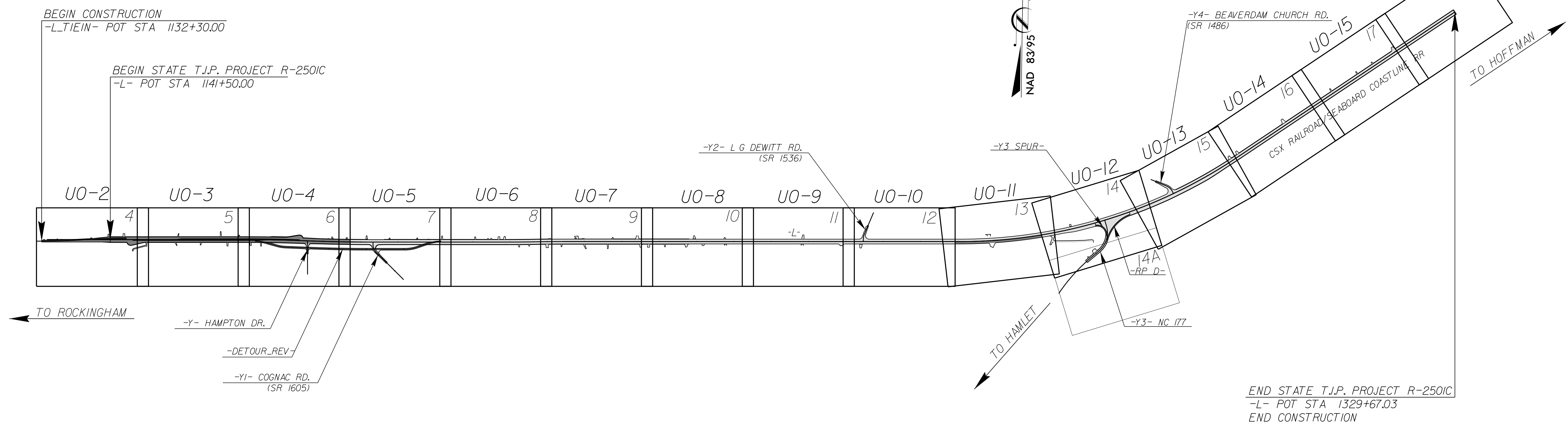
**UTILITIES BY OTHERS PLANS
RICHMOND COUNTY**

**LOCATION: US 1 FROM NORTH OF SR 1606 (FOX ROAD) TO
SOUTH OF SR 1001 (MARSTON ROAD)**

TYPE OF WORK: UTILITY RELOCATION

T.I.P. NO.	SHEET NO.
R-2501C	UO-1

NOTE:
ALL UTILITY WORK SHOWN ON THIS SHEET IS DONE BY OTHERS.
NO PAYMENT WILL BE MADE TO THE CONTRACTOR FOR UTILITY WORK SHOWN ON THIS SHEET.



INDEX OF SHEETS

SHEET NO.:	DESCRIPTION:
UO-1	TITLE SHEET
UO-2 THRU UO-16	UBO PLAN SHEETS

- UTILITY OWNERS WITH CONFLICTS**
- (A) POWER DISTRIBUTION - DUKE ENERGY
 - (B) POWER DISTRIBUTION - PEE DEE ELECTRIC
 - (C) COMMUNICATIONS - MCI
 - (D) COMMUNICATIONS - AT&T
 - (E) COMMUNICATIONS - MCNC
 - (F) COMMUNICATIONS - SPECTRUM
 - (G) GAS DISTRIBUTION - DIXIE PIPELINE
 - (H) WATER - RICHMOND COUNTY

PREPARED IN THE OFFICE OF:

Michael Baker
INTERNATIONAL

Michael Baker Engineering, Inc.
8000 Regency Parkway, Suite 600
Cary, NC 27518
919-463-5488

Brandy Creech	UTILITY PROJECT MANAGER
Brandy Creech	PROJECT UTILITY COORDINATOR
Christina Newsome	PROJECT UTILITY TECHNICIAN

**DIVISION OF HIGHWAYS
UTILITIES UNIT**
1555 MAIL SERVICES CENTER
RALEIGH NC 27699-1555
PHONE (919) 707-6690
FAX (919) 250-4151

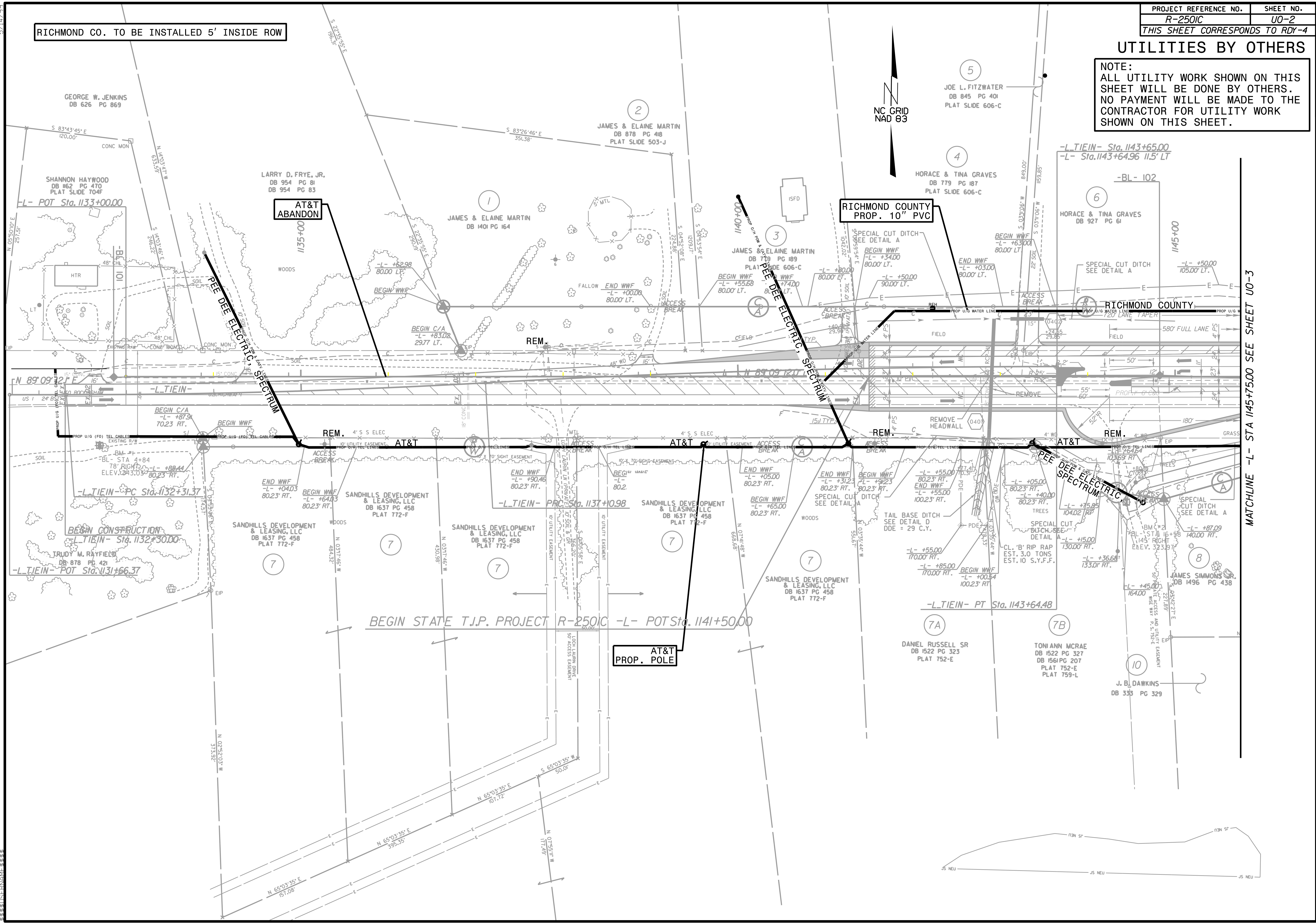
Ali Kouchehi, PE	UTILITIES REGIONAL ENGINEER
Bernard Bumgarner	UTILITIES ENGINEER
Amy Dupree	UTILITIES AREA COORDINATOR
O'Hara Parker	UTILITIES COORDINATOR

UTILITIES BY OTHERS

NOTE:
 ALL UTILITY WORK SHOWN ON THIS SHEET WILL BE DONE BY OTHERS. NO PAYMENT WILL BE MADE TO THE CONTRACTOR FOR UTILITY WORK SHOWN ON THIS SHEET.

RICHMOND CO. TO BE INSTALLED 5' INSIDE ROW

NC GRID
 NAD 83



MATCHLINE -L- STA 1145+75.00 SEE SHEET U0-3

5/14/99

UTILITIES BY OTHERS

NOTE:
ALL UTILITY WORK SHOWN ON THIS SHEET WILL BE DONE BY OTHERS. NO PAYMENT WILL BE MADE TO THE CONTRACTOR FOR UTILITY WORK SHOWN ON THIS SHEET.

RICHMOND CO. TO BE INSTALLED 5' INSIDE ROW

DIXIE PIPELINE
PROP. 6" GAS

RICHMOND COUNTY
PROP. WATERLINE
3 FT BELOW PROP. BASIN

RICHMOND COUNTY
PROP. 10" PVC

AT&T
ABANDON

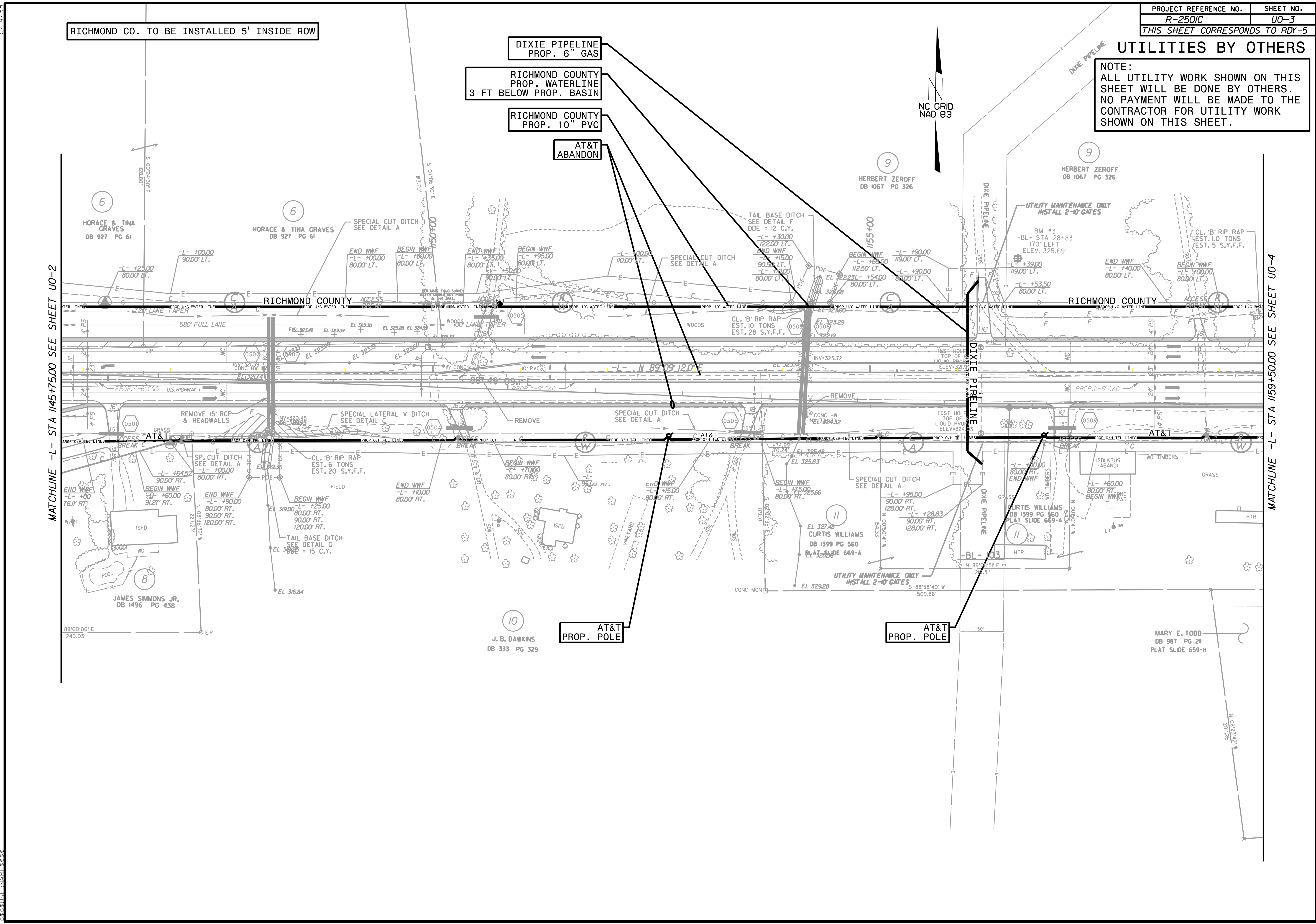
AT&T
PROP. POLE

AT&T
PROP. POLE

NC GRID
NAD 83

MATCHLINE -L- STA 145+75.00 SEE SHEET U0-2

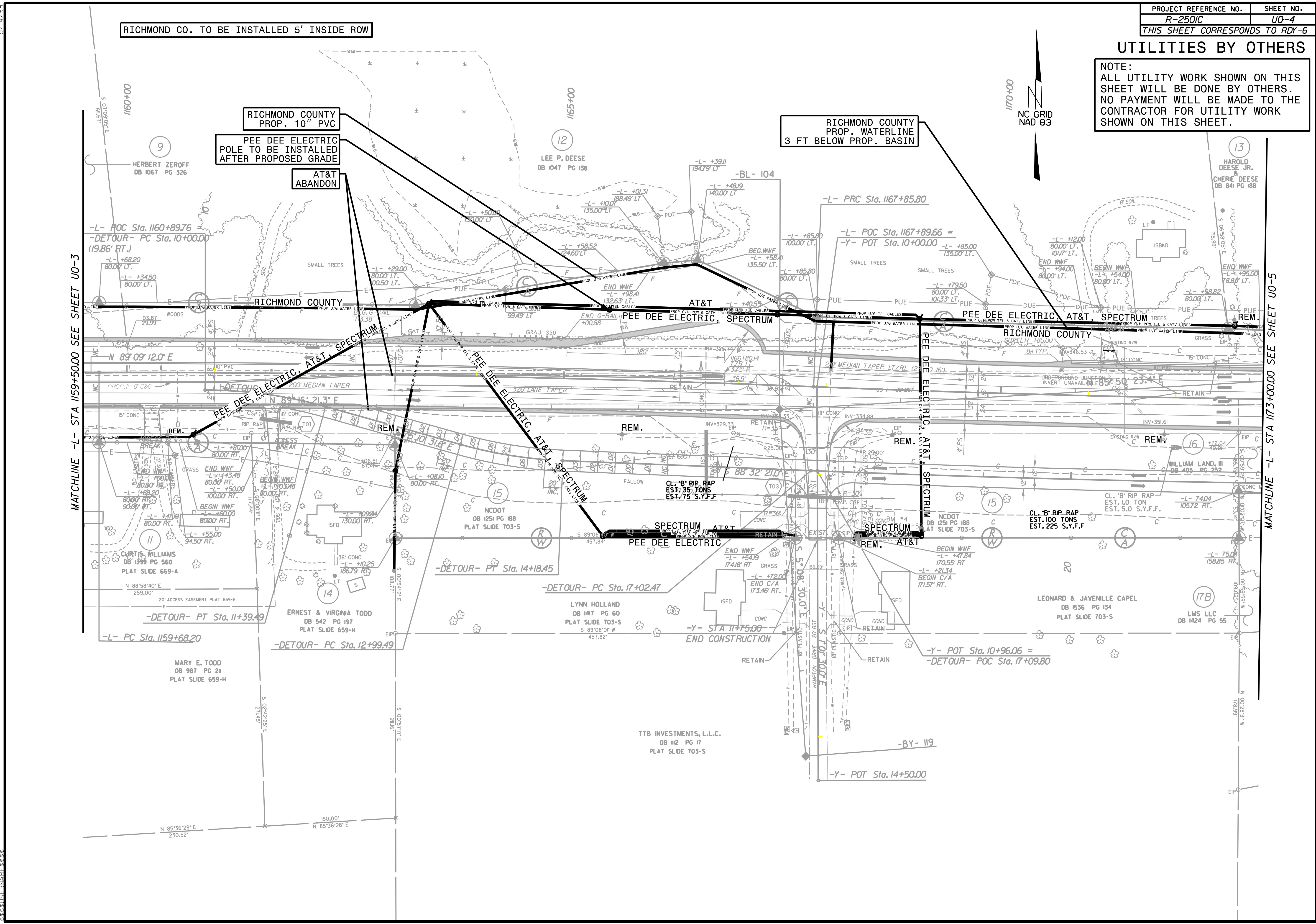
MATCHLINE -L- STA 1159+50.00 SEE SHEET U0-4



5/14/99
C:\PROJECTS\RDY-5\U0-3\U0-3.DWG
PLT=U0-3.PLT
PLOT DATE=5/14/99 10:00 AM
PLOT BY=JTB

UTILITIES BY OTHERS

NOTE:
 ALL UTILITY WORK SHOWN ON THIS SHEET WILL BE DONE BY OTHERS.
 NO PAYMENT WILL BE MADE TO THE CONTRACTOR FOR UTILITY WORK SHOWN ON THIS SHEET.



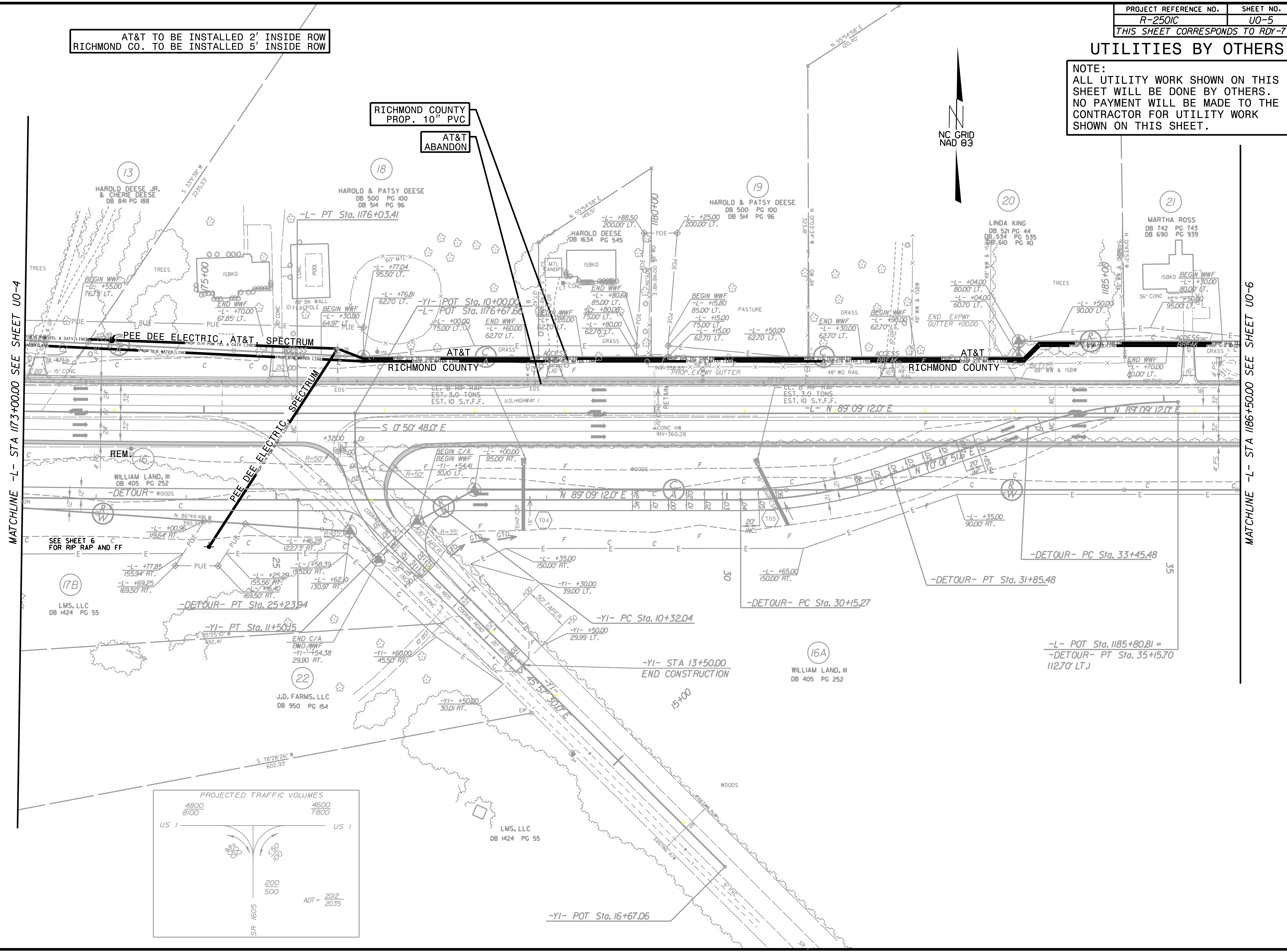
5/14/99
 MATCHLINE -L- STA 1159+50.00 SEE SHEET U0-3
 MATCHLINE -L- STA 1173+00.00 SEE SHEET U0-5

UTILITIES BY OTHERS

NOTE:
 ALL UTILITY WORK SHOWN ON THIS SHEET WILL BE DONE BY OTHERS. NO PAYMENT WILL BE MADE TO THE CONTRACTOR FOR UTILITY WORK SHOWN ON THIS SHEET.

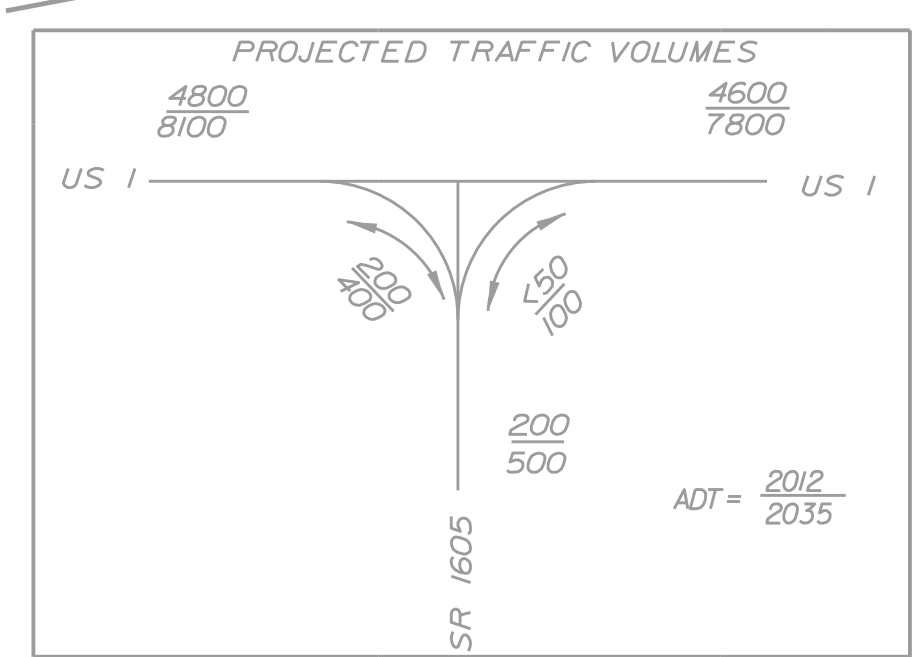
AT&T TO BE INSTALLED 2' INSIDE ROW
 RICHMOND CO. TO BE INSTALLED 5' INSIDE ROW

RICHMOND COUNTY
 PROP. 10" PVC
 AT&T
 ABANDON



MATCHLINE -L- STA 1173+00.00 SEE SHEET U0-4

MATCHLINE -L- STA 1186+50.00 SEE SHEET U0-6



-YI- POT Sta. 16+67.06

-L- POT Sta. 1185+80.81 =
 -DETOUR- PT Sta. 35+15.70
 (12.70' LT.)

5/14/2009

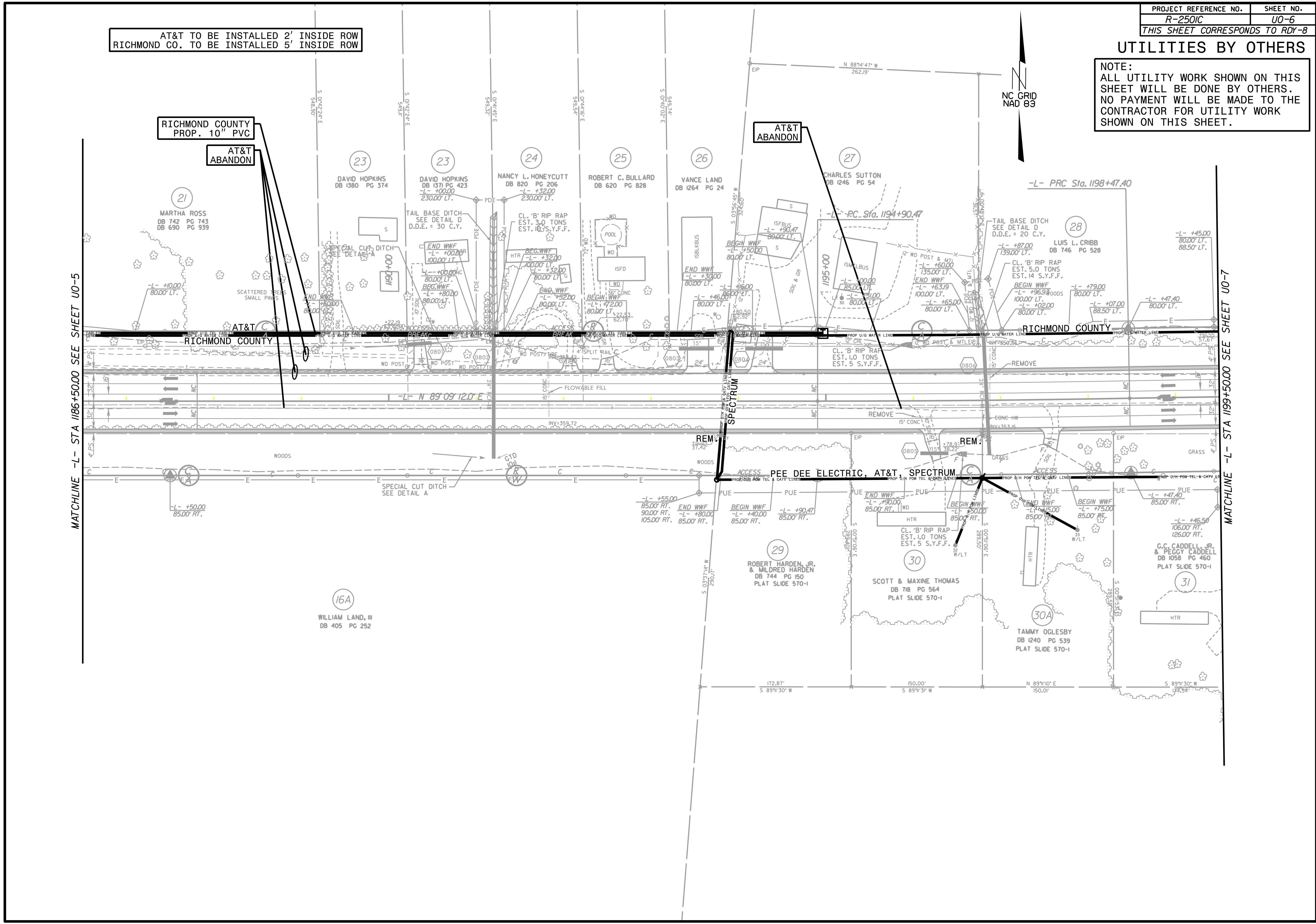
UTILITIES BY OTHERS

NOTE:
 ALL UTILITY WORK SHOWN ON THIS SHEET WILL BE DONE BY OTHERS.
 NO PAYMENT WILL BE MADE TO THE CONTRACTOR FOR UTILITY WORK SHOWN ON THIS SHEET.

AT&T TO BE INSTALLED 2' INSIDE ROW
 RICHMOND CO. TO BE INSTALLED 5' INSIDE ROW

MATCHLINE -L- STA 1186+50.00 SEE SHEET U0-5

MATCHLINE -L- STA 1199+50.00 SEE SHEET U0-7



RICHMOND COUNTY
 PROP. 10" PVC
 AT&T
 ABANDON

AT&T
 ABANDON

NC GRID
 NAD 83

21
 MARTHA ROSS
 DB 742 PG 743
 DB 690 PG 939

23
 DAVID HOPKINS
 DB 1380 PG 374

23
 DAVID HOPKINS
 DB 1371 PG 423
 -L- +00.00
 230.00' LT.

24
 NANCY L. HONEYCUTT
 DB 820 PG 206
 -L- +32.00
 230.00' LT.

25
 ROBERT C. BULLARD
 DB 620 PG 828

26
 VANCE LAND
 DB 1264 PG 24

27
 CHARLES SUTTON
 DB 1246 PG 54

28
 LUIS L. CRIBB
 DB 746 PG 528

16A
 WILLIAM LAND, III
 DB 405 PG 252

29
 ROBERT HARDEN, JR.
 & MILDRED HARDEN
 DB 744 PG 150
 PLAT SLIDE 570-1

30
 SCOTT & MAXINE THOMAS
 DB 718 PG 564
 PLAT SLIDE 570-1

30A
 TAMMY OGLESBY
 DB 1240 PG 539
 PLAT SLIDE 570-1

31
 G.C. CADDELL, JR.
 & PEGGY CADDELL
 DB 1058 PG 460
 PLAT SLIDE 570-1

UTILITIES BY OTHERS

NOTE:
 ALL UTILITY WORK SHOWN ON THIS SHEET WILL BE DONE BY OTHERS. NO PAYMENT WILL BE MADE TO THE CONTRACTOR FOR UTILITY WORK SHOWN ON THIS SHEET.

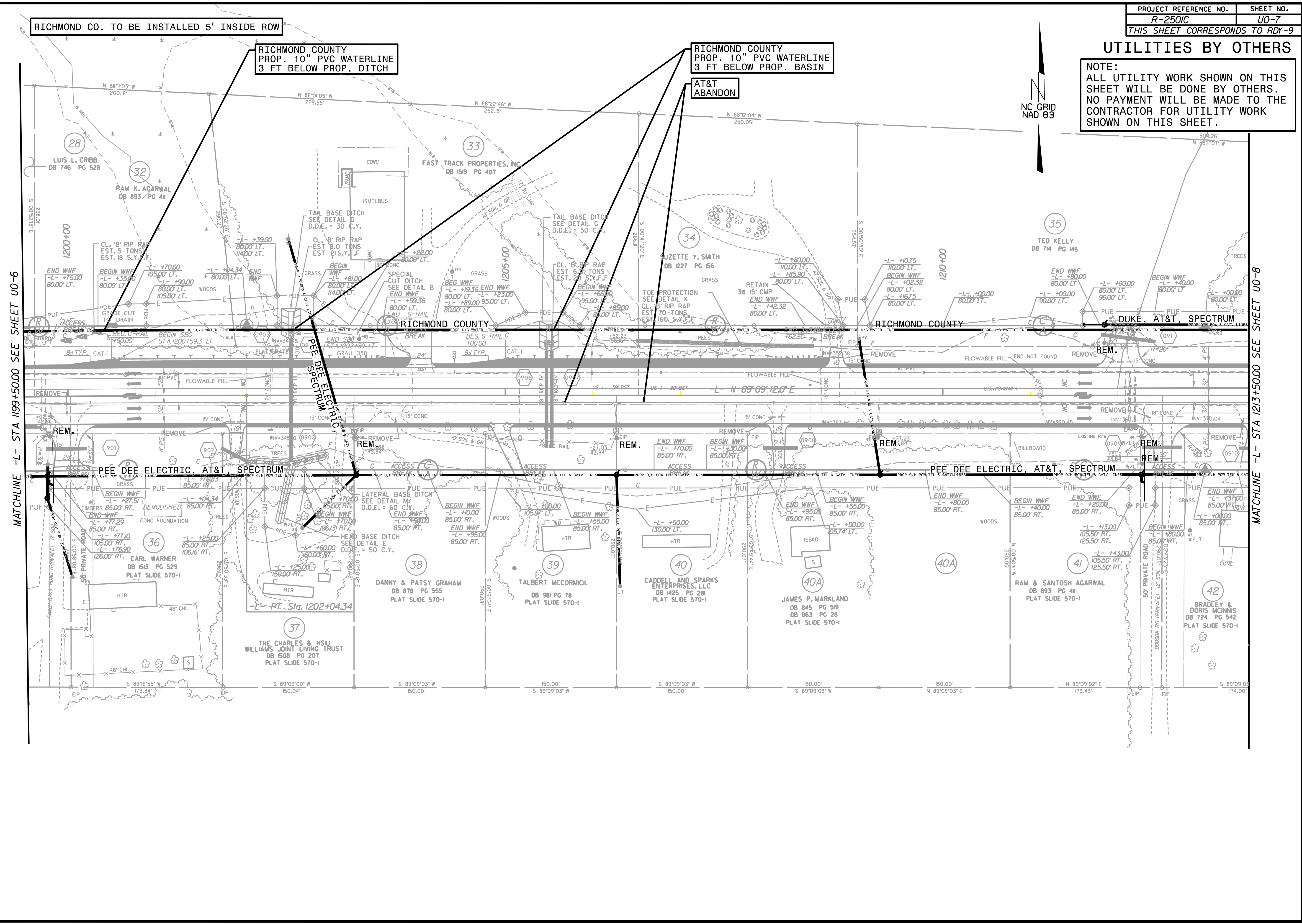
RICHMOND CO. TO BE INSTALLED 5' INSIDE ROW

RICHMOND COUNTY
 PROP. 10" PVC WATERLINE
 3 FT BELOW PROP. DITCH

RICHMOND COUNTY
 PROP. 10" PVC WATERLINE
 3 FT BELOW PROP. BASIN

AT&T
 ABANDON

NC GRID
 NAD 83



MATCHLINE -L- STA 1199+50.00 SEE SHEET U0-6

MATCHLINE -L- STA 1213+50.00 SEE SHEET U0-8

5/14/99

RICHMOND CO. TO BE INSTALLED 5' INSIDE ROW

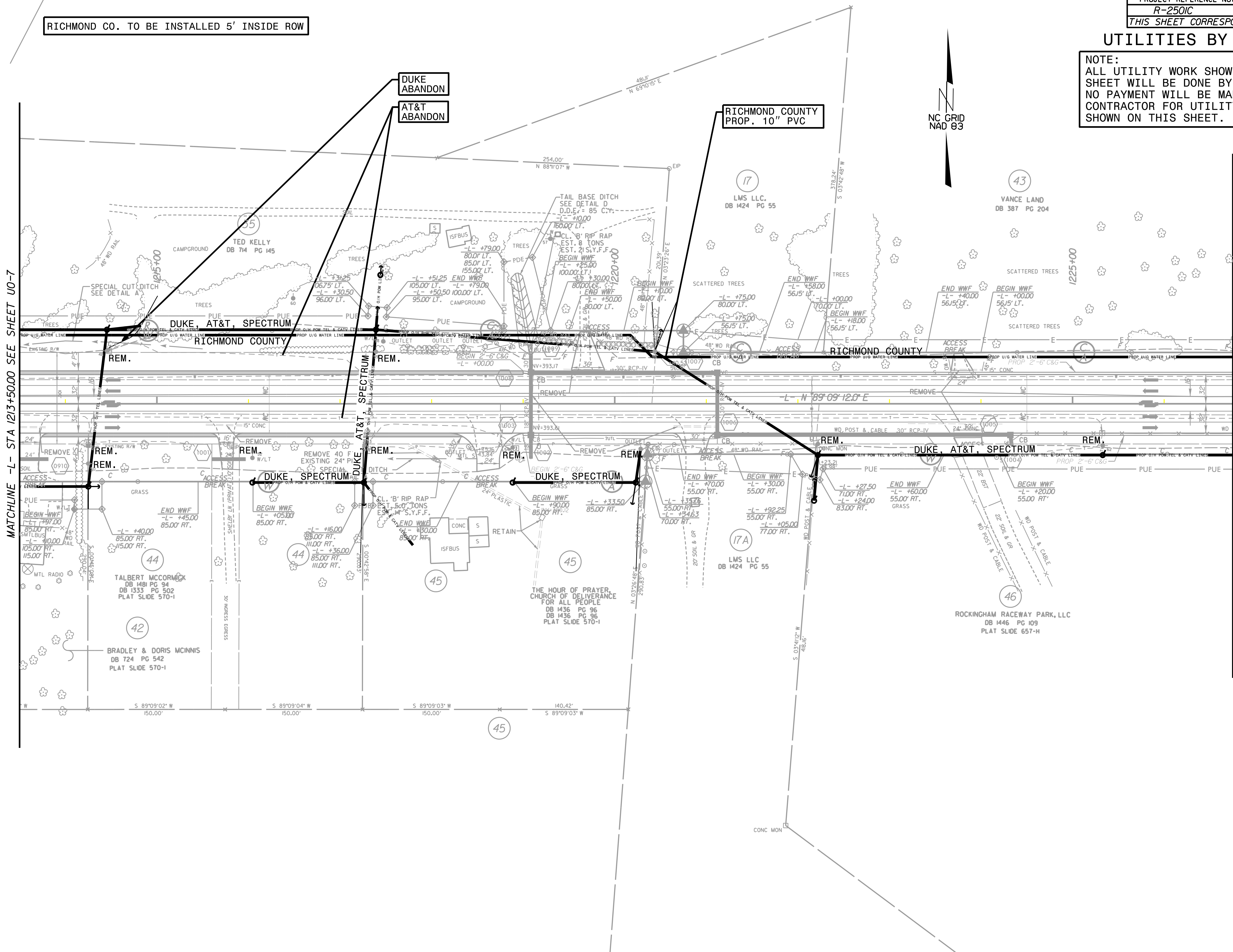
UTILITIES BY OTHERS

NOTE:
 ALL UTILITY WORK SHOWN ON THIS SHEET WILL BE DONE BY OTHERS. NO PAYMENT WILL BE MADE TO THE CONTRACTOR FOR UTILITY WORK SHOWN ON THIS SHEET.



MATCHLINE -L- STA 1213+50.00 SEE SHEET U0-7

MATCHLINE -L- STA 1226+75.00 SEE SHEET U0-9



AT&T TO BE INSTALLED 2' INSIDE ROW
 RICHMOND CO. TO BE INSTALLED 5' INSIDE ROW

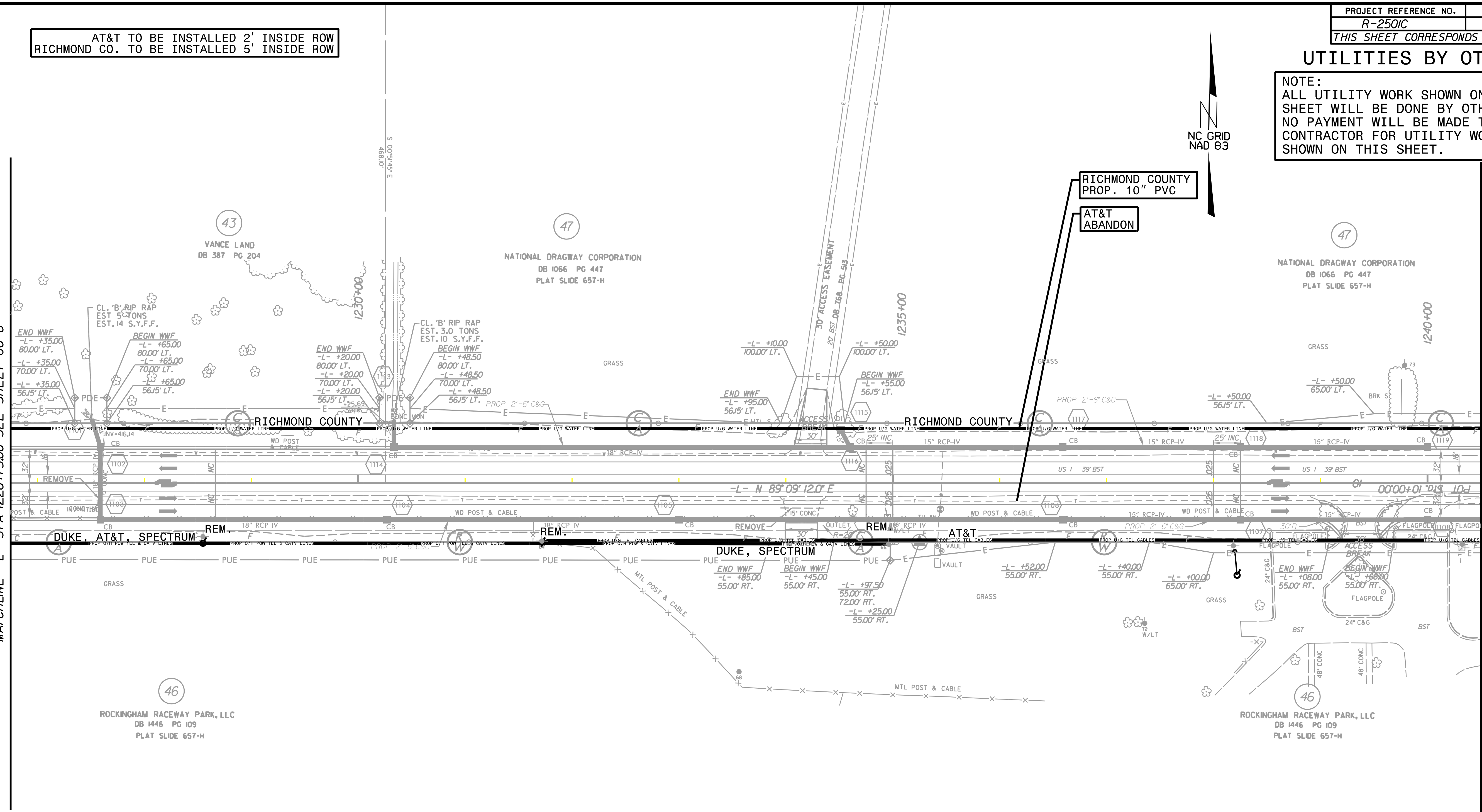
UTILITIES BY OTHERS

NOTE:
 ALL UTILITY WORK SHOWN ON THIS SHEET WILL BE DONE BY OTHERS. NO PAYMENT WILL BE MADE TO THE CONTRACTOR FOR UTILITY WORK SHOWN ON THIS SHEET.

NC GRID
 NAD 83

MATCHLINE -L- STA 1226+75.00 SEE SHEET U0-8

MATCHLINE -L- STA 1240+50.00 SEE SHEET U0-10



46
 ROCKINGHAM RACEWAY PARK, LLC
 DB 1446 PG 109
 PLAT SLIDE 657-H

46
 ROCKINGHAM RACEWAY PARK, LLC
 DB 1446 PG 109
 PLAT SLIDE 657-H

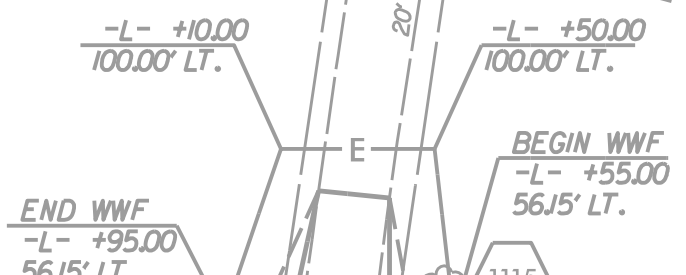
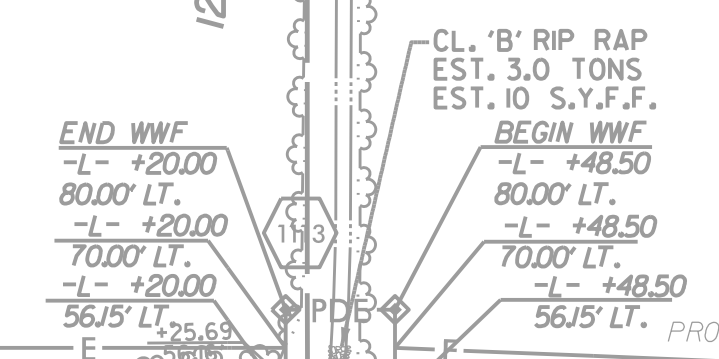
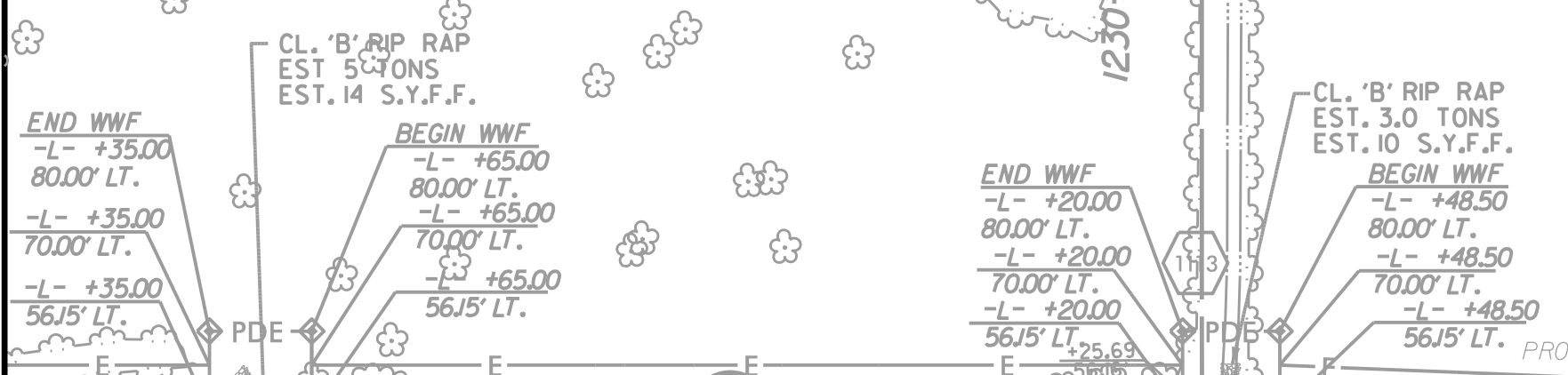
47
 NATIONAL DRAGWAY CORPORATION
 DB 1066 PG 447
 PLAT SLIDE 657-H

47
 NATIONAL DRAGWAY CORPORATION
 DB 1066 PG 447
 PLAT SLIDE 657-H

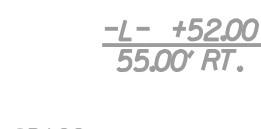
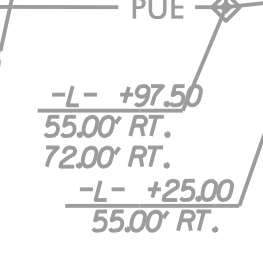
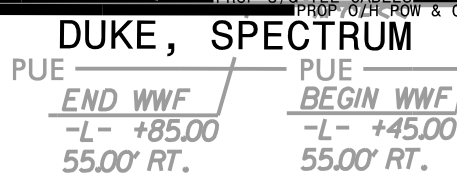
43
 VANCE LAND
 DB 387 PG 204

RICHMOND COUNTY
 PROP. 10" PVC

AT&T
 ABANDON



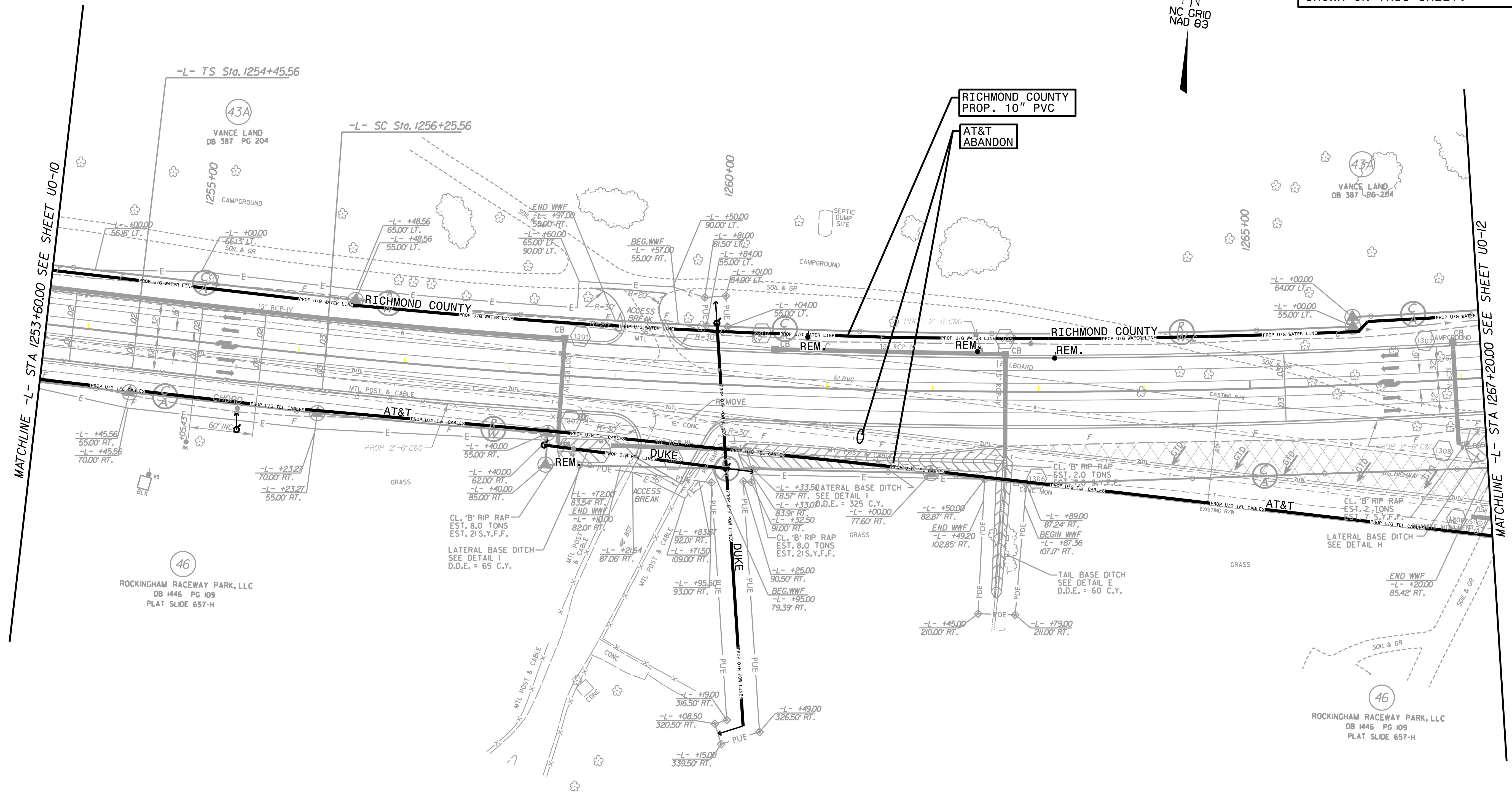
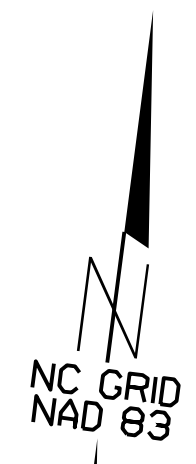
-L- N 89° 09' 12.0" E



AT&T TO BE INSTALLED 2' INSIDE ROW
 RICHMOND CO. TO BE INSTALLED 5' INSIDE ROW

UTILITIES BY OTHERS

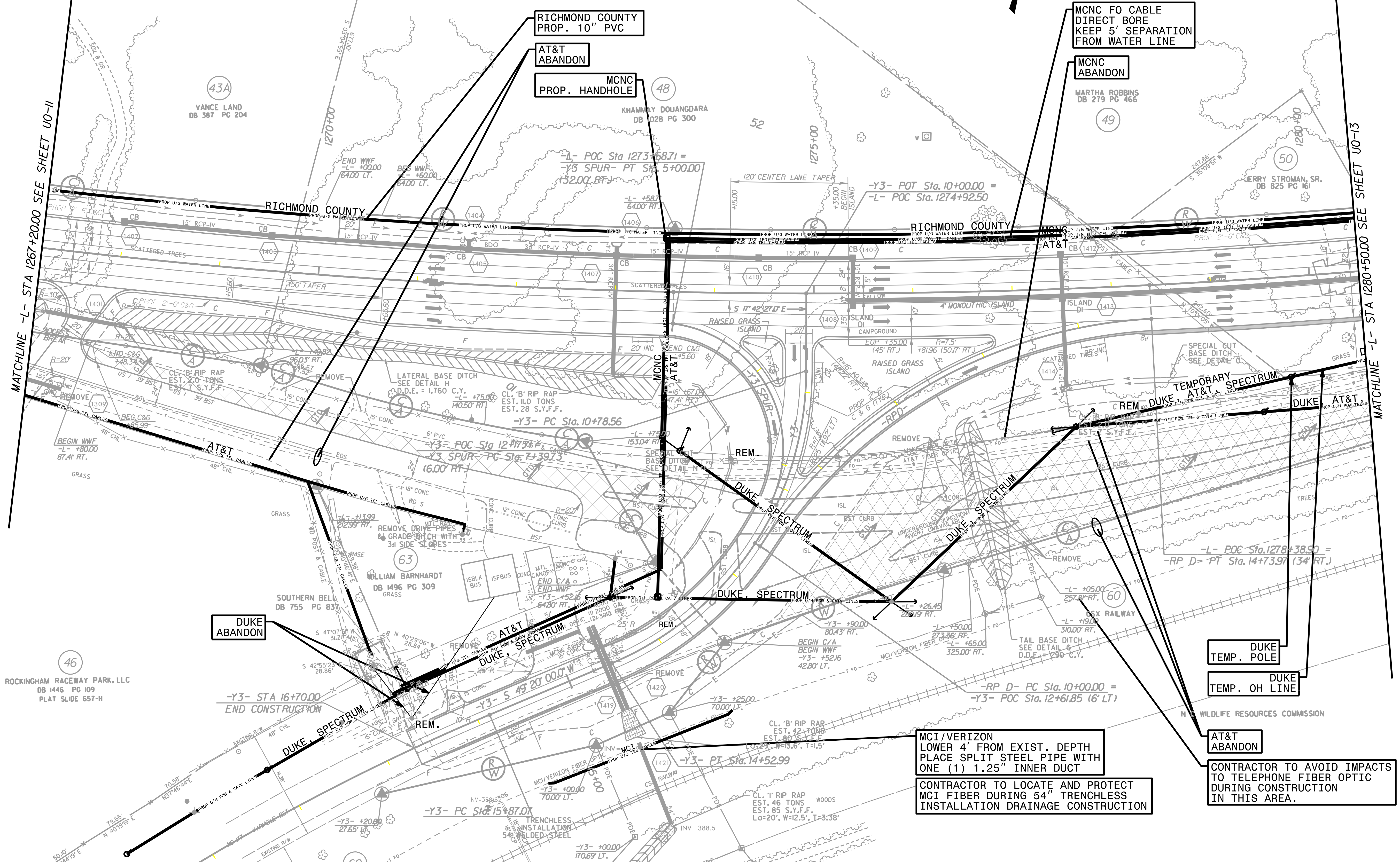
NOTE:
 ALL UTILITY WORK SHOWN ON THIS SHEET WILL BE DONE BY OTHERS. NO PAYMENT WILL BE MADE TO THE CONTRACTOR FOR UTILITY WORK SHOWN ON THIS SHEET.



UTILITIES BY OTHERS

NOTE:
 ALL UTILITY WORK SHOWN ON THIS SHEET WILL BE DONE BY OTHERS. NO PAYMENT WILL BE MADE TO THE CONTRACTOR FOR UTILITY WORK SHOWN ON THIS SHEET.

**RICHMOND CO. TO BE INSTALLED 5' INSIDE ROW
 MCNC TO BE INSTALLED 10' INSIDE ROW
 AT&T TO BE INSTALLED 13' INSIDE ROW**



MATCHLINE -L- STA 1267+20.00 SEE SHEET UO-11

MATCHLINE -L- STA 1280+50.00 SEE SHEET UO-13

DUKE
TEMP. POLE

DUKE
TEMP. OH LINE

MCI/VERIZON
 LOWER 4' FROM EXIST. DEPTH
 PLACE SPLIT STEEL PIPE WITH
 ONE (1) 1.25" INNER DUCT

CONTRACTOR TO LOCATE AND PROTECT
 MCI FIBER DURING 54" TRENCHLESS
 INSTALLATION DRAINAGE CONSTRUCTION

AT&T
 ABANDON

CONTRACTOR TO AVOID IMPACTS
 TO TELEPHONE FIBER OPTIC
 DURING CONSTRUCTION
 IN THIS AREA.

5/14/99

UTILITIES BY OTHERS

NOTE:
 ALL UTILITY WORK SHOWN ON THIS SHEET WILL BE DONE BY OTHERS. NO PAYMENT WILL BE MADE TO THE CONTRACTOR FOR UTILITY WORK SHOWN ON THIS SHEET.

RICHMOND CO. TO BE INSTALLED 5' INSIDE ROW
 MCNC TO BE INSTALLED 10' INSIDE ROW
 AT&T TO BE INSTALLED 13' INSIDE ROW

RICHMOND COUNTY
 PROP. 10" PVC

MCNC FO CABLE
 DIRECT BORE
 KEEP 5' SEPARATION
 FROM WATER LINE

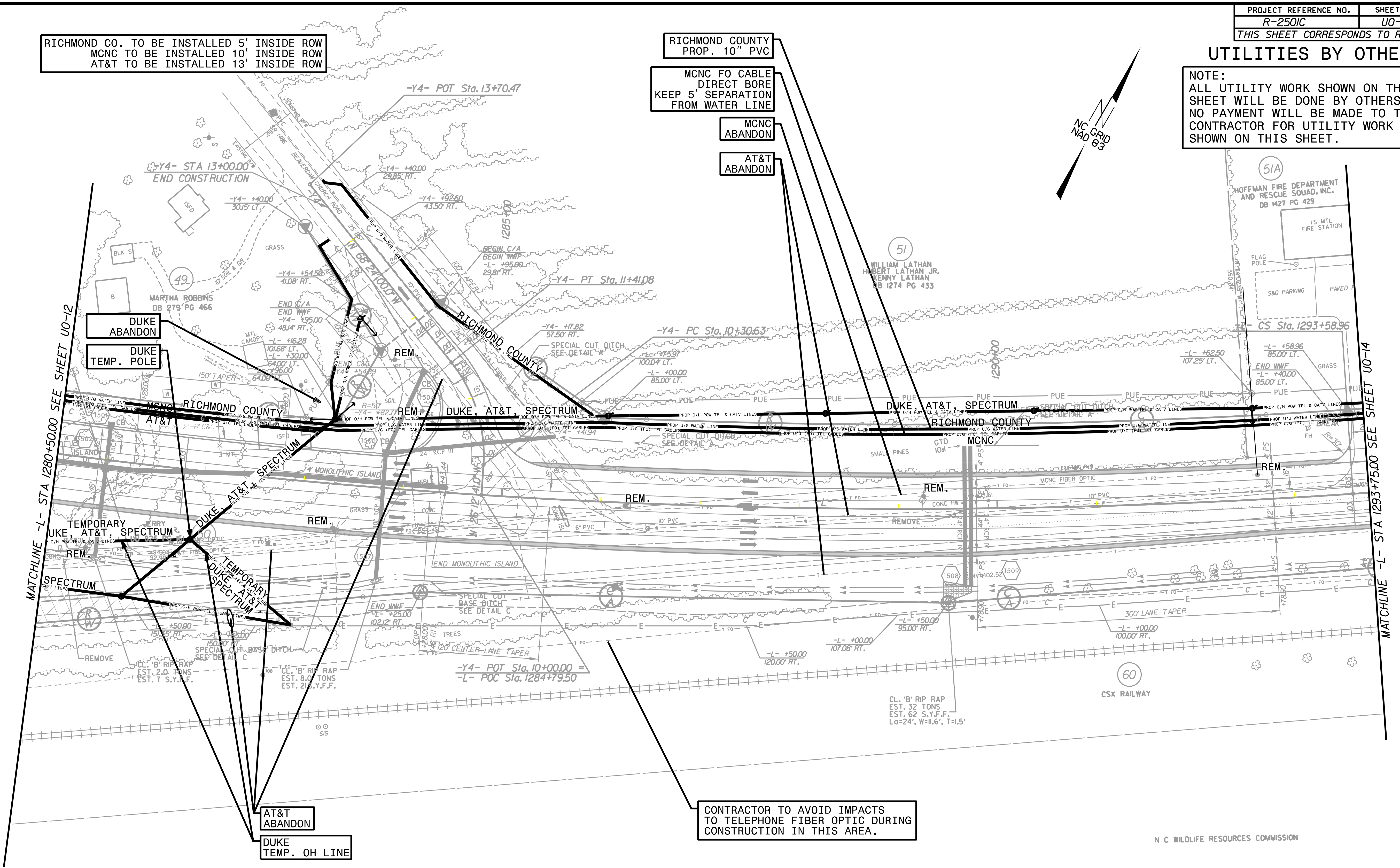
MCNC
 ABANDON

AT&T
 ABANDON



MATCHLINE -L- STA 1280+5000 SEE SHEET U0-12

MATCHLINE -L- STA 1293+7500 SEE SHEET U0-14



AT&T
 ABANDON

DUKE
 TEMP. OH LINE

CONTRACTOR TO AVOID IMPACTS
 TO TELEPHONE FIBER OPTIC DURING
 CONSTRUCTION IN THIS AREA.

UTILITIES BY OTHERS

NOTE:
 ALL UTILITY WORK SHOWN ON THIS SHEET WILL BE DONE BY OTHERS.
 NO PAYMENT WILL BE MADE TO THE CONTRACTOR FOR UTILITY WORK SHOWN ON THIS SHEET.

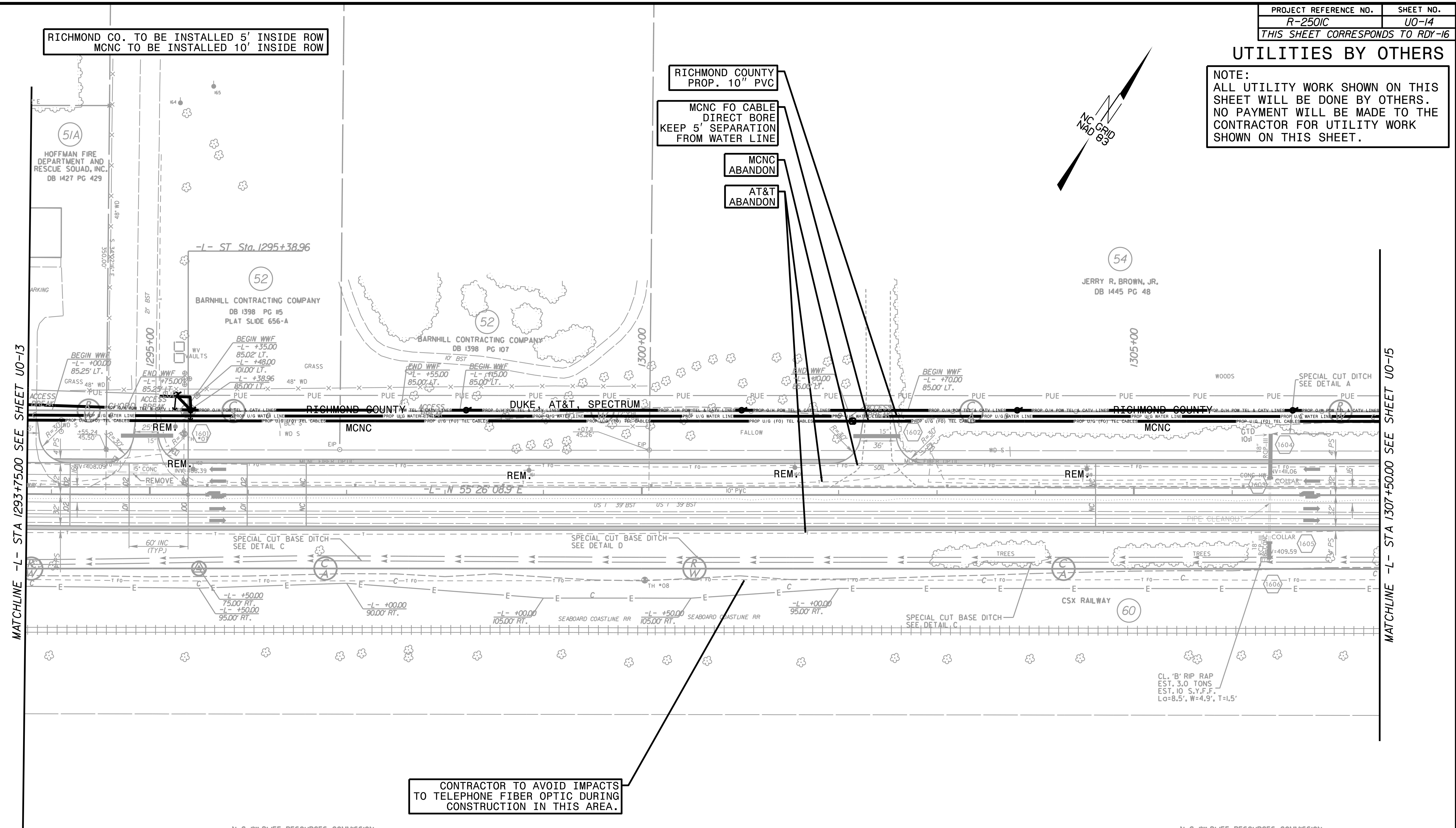
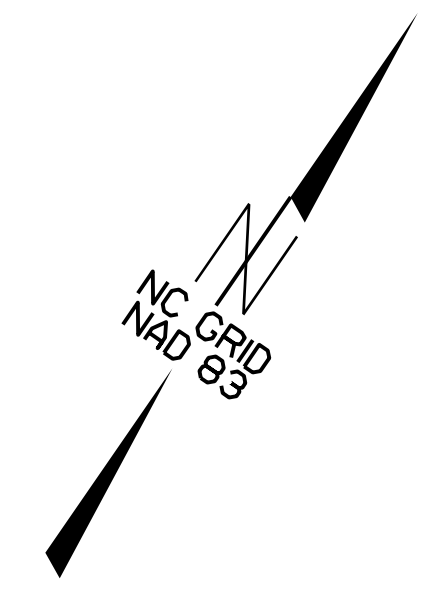
RICHMOND CO. TO BE INSTALLED 5' INSIDE ROW
 MCNC TO BE INSTALLED 10' INSIDE ROW

RICHMOND COUNTY
 PROP. 10" PVC

MCNC FO CABLE
 DIRECT BORE
 KEEP 5' SEPARATION
 FROM WATER LINE

MCNC
 ABANDON

AT&T
 ABANDON



MATCHLINE -L- STA 1293+75.00 SEE SHEET U0-13

MATCHLINE -L- STA 1307+50.00 SEE SHEET U0-15

CONTRACTOR TO AVOID IMPACTS
 TO TELEPHONE FIBER OPTIC DURING
 CONSTRUCTION IN THIS AREA.

N C WILDLIFE RESOURCES COMMISSION

N C WILDLIFE RESOURCES COMMISSION

CL. 'B' RIP RAP
 EST. 3.0 TONS
 EST. 10 S.Y.F.F.
 L=8.5', W=4.9', T=1.5'

5/14/99

UTILITIES BY OTHERS

NOTE:
ALL UTILITY WORK SHOWN ON THIS SHEET WILL BE DONE BY OTHERS. NO PAYMENT WILL BE MADE TO THE CONTRACTOR FOR UTILITY WORK SHOWN ON THIS SHEET.

RICHMOND CO. TO BE INSTALLED 5' INSIDE ROW
MCNC TO BE INSTALLED 10' INSIDE ROW

RICHMOND COUNTY
PROP. 10" PVC

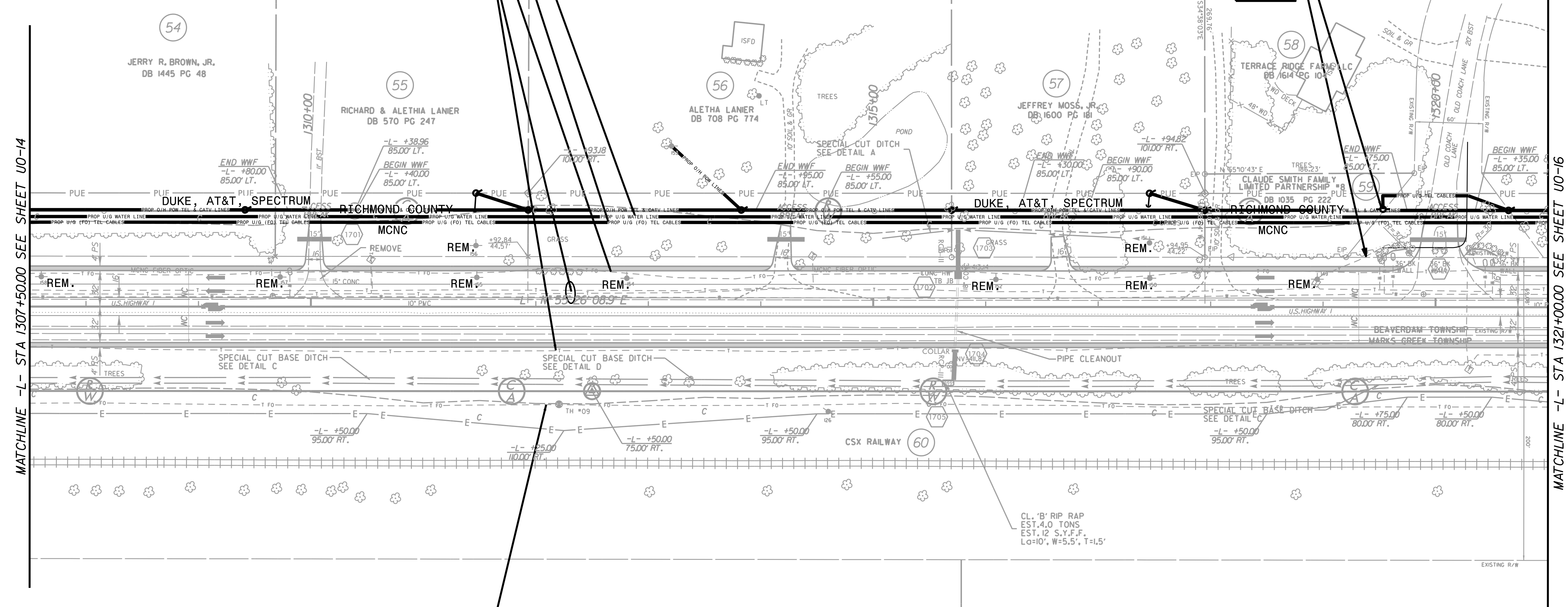
MCNC FO CABLE
DIRECT BORE
KEEP 5' SEPARATION
FROM WATER LINE

MCNC
ABANDON

AT&T
ABANDON

AT&T
PROP. POLE

DUKE
ABANDON



MATCHLINE -L- STA 1307+50.00 SEE SHEET U0-14

MATCHLINE -L- STA 1321+00.00 SEE SHEET U0-16

CONTRACTOR TO AVOID IMPACTS
TO TELEPHONE FIBER OPTIC DURING
CONSTRUCTION IN THIS AREA.

N C WILDLIFE RESOURCES COMMISSION
AMERICAN TIMBERLAND II LLC
DB 1060 PG 422

NOTE: FROM 1319+00 TO 1320+75 THE 2.5' MINIMUM DITCH DEPTH REQUIREMENT CANNOT BE ATTAINED THEREFORE THE PROPOSED DITCH GRADES ON THE PROFILE SHOULD BE MAINTAINED. ANY DITCH OVERFLOW WILL HAVE NO ADVERSE IMPACT TO THE ROADWAY OR THE RAILROAD PROPERTY.

UTILITIES BY OTHERS

NOTE:
ALL UTILITY WORK SHOWN ON THIS SHEET WILL BE DONE BY OTHERS. NO PAYMENT WILL BE MADE TO THE CONTRACTOR FOR UTILITY WORK SHOWN ON THIS SHEET.

**RICHMOND CO. TO BE INSTALLED 5' INSIDE ROW
MCNC TO BE INSTALLED 10' INSIDE ROW**

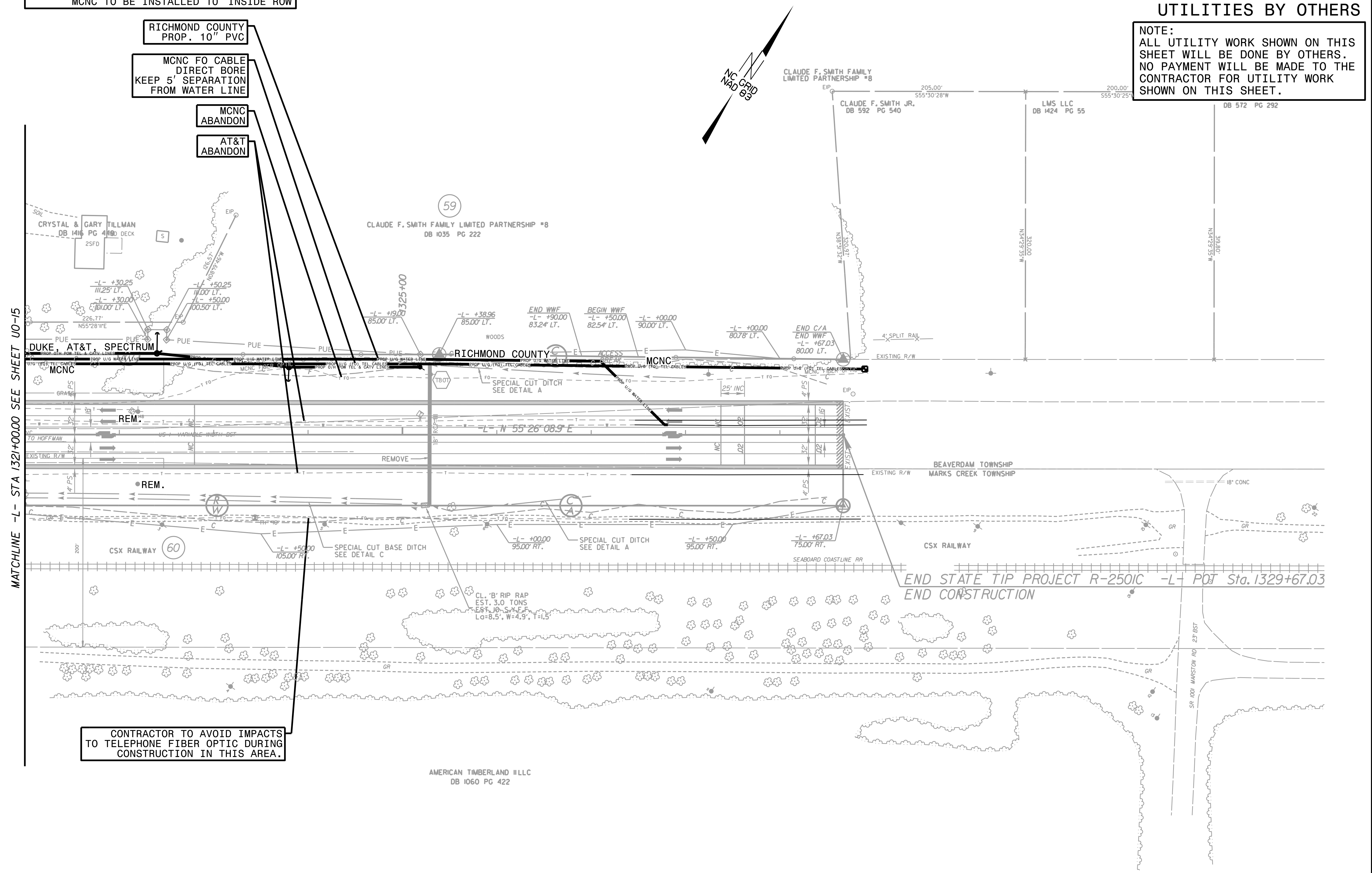
**RICHMOND COUNTY
PROP. 10" PVC**

**MCNC FO CABLE
DIRECT BORE
KEEP 5' SEPARATION
FROM WATER LINE**

**MCNC
ABANDON**

**AT&T
ABANDON**

MATCHLINE -L- STA 1321+00.00 SEE SHEET U0-15



**CONTRACTOR TO AVOID IMPACTS
TO TELEPHONE FIBER OPTIC DURING
CONSTRUCTION IN THIS AREA.**

5/14/99
L-1
L-2
L-3
L-4
L-5
L-6
L-7
L-8
L-9
L-10
L-11
L-12
L-13
L-14
L-15
L-16
L-17
L-18
L-19
L-20
L-21
L-22
L-23
L-24
L-25
L-26
L-27
L-28
L-29
L-30
L-31
L-32
L-33
L-34
L-35
L-36
L-37
L-38
L-39
L-40
L-41
L-42
L-43
L-44
L-45
L-46
L-47
L-48
L-49
L-50
L-51
L-52
L-53
L-54
L-55
L-56
L-57
L-58
L-59
L-60
L-61
L-62
L-63
L-64
L-65
L-66
L-67
L-68
L-69
L-70
L-71
L-72
L-73
L-74
L-75
L-76
L-77
L-78
L-79
L-80
L-81
L-82
L-83
L-84
L-85
L-86
L-87
L-88
L-89
L-90
L-91
L-92
L-93
L-94
L-95
L-96
L-97
L-98
L-99
L-100