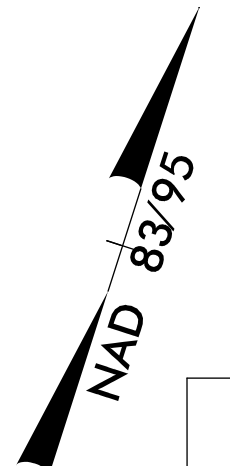


PROJECT REFERENCE NO.	SHEET NO.
R-2501 C	EC-32/CONST.14
RW SHEET NO.	
ROADWAY DESIGN ENGINEER	HYDRAULICS ENGINEER

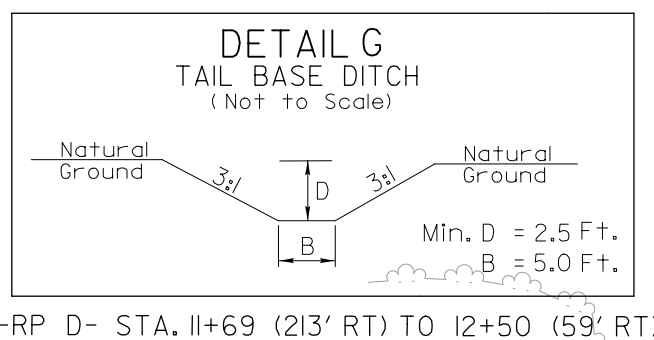
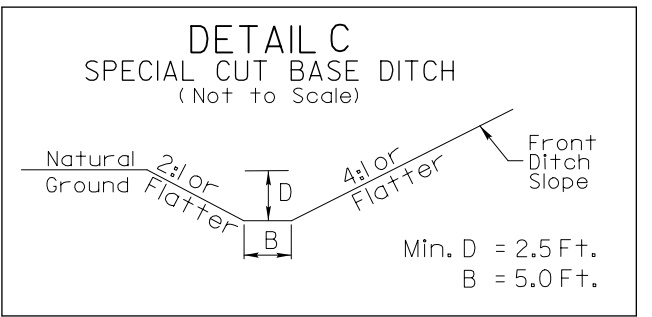
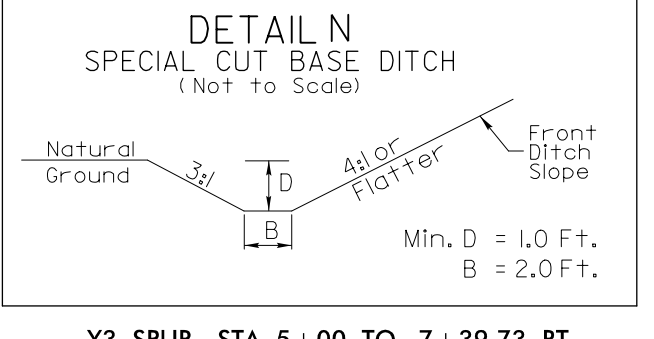
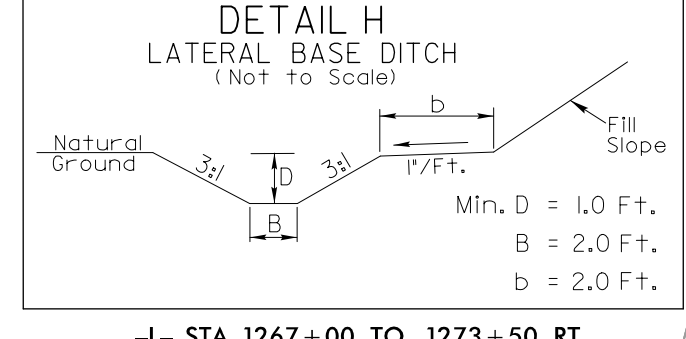


-L-
 PI Sta 1275+42.89
 $\Delta = 32' 10'' 00.8''$ (LT)
 $D = 0' 51' 41.7''$
 $L = 3,733.40$
 $T = 1,917.33$
 $R = 6,650.00'$

-Y3-
 PI Sta 12+90.53
 $\Delta = 67' 02' 27.0''$ (RT)
 $D = 17' 54' 17.8''$
 $L = 374.43'$
 $T = 211.97'$
 $R = 320.00'$

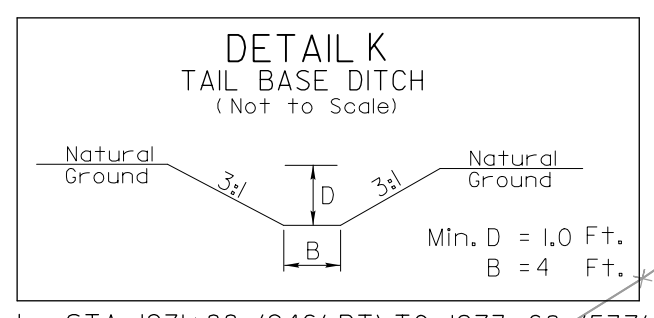
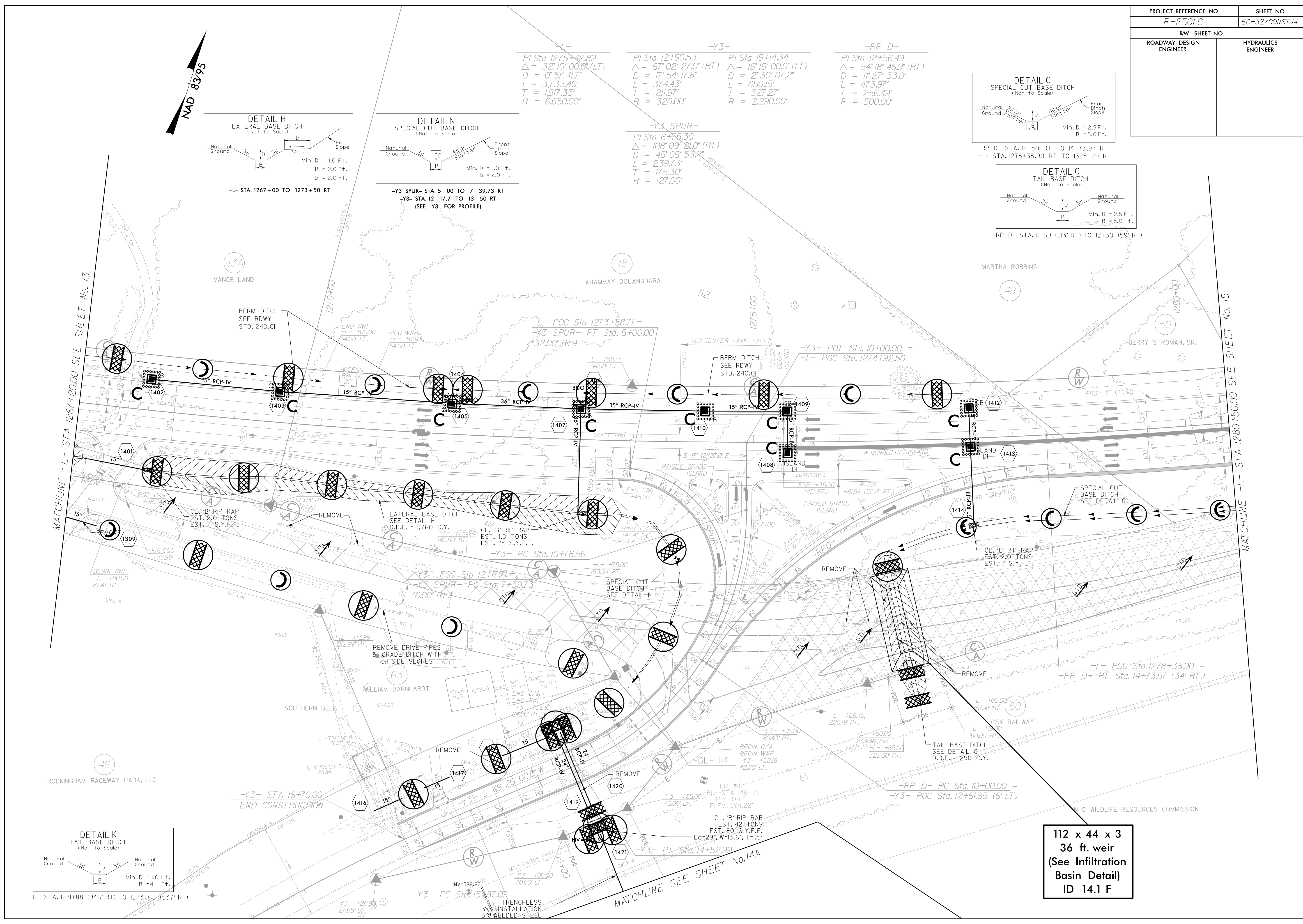
PI Sta 19+14.34
 $\Delta = 16' 16' 00.0''$ (LT)
 $D = 2' 30' 07.2''$
 $L = 650.15'$
 $T = 327.27'$
 $R = 2,290.00'$

-RP D-
 PI Sta 12+56.49
 $\Delta = 54' 18' 46.9''$ (RT)
 $D = 11' 27' 33.0''$
 $L = 473.97'$
 $T = 256.49'$
 $R = 500.00'$



MATCHLINE -L- STA 1267+20.00 SEE SHEET No. 13

MATCHLINE -L- STA 1280+50.00 SEE SHEET No. 15



112 x 44 x 3
 36 ft weir
 (See Infiltration
 Basin Detail)
 ID 14.1 F

MATCHLINE SEE SHEET No. 14A