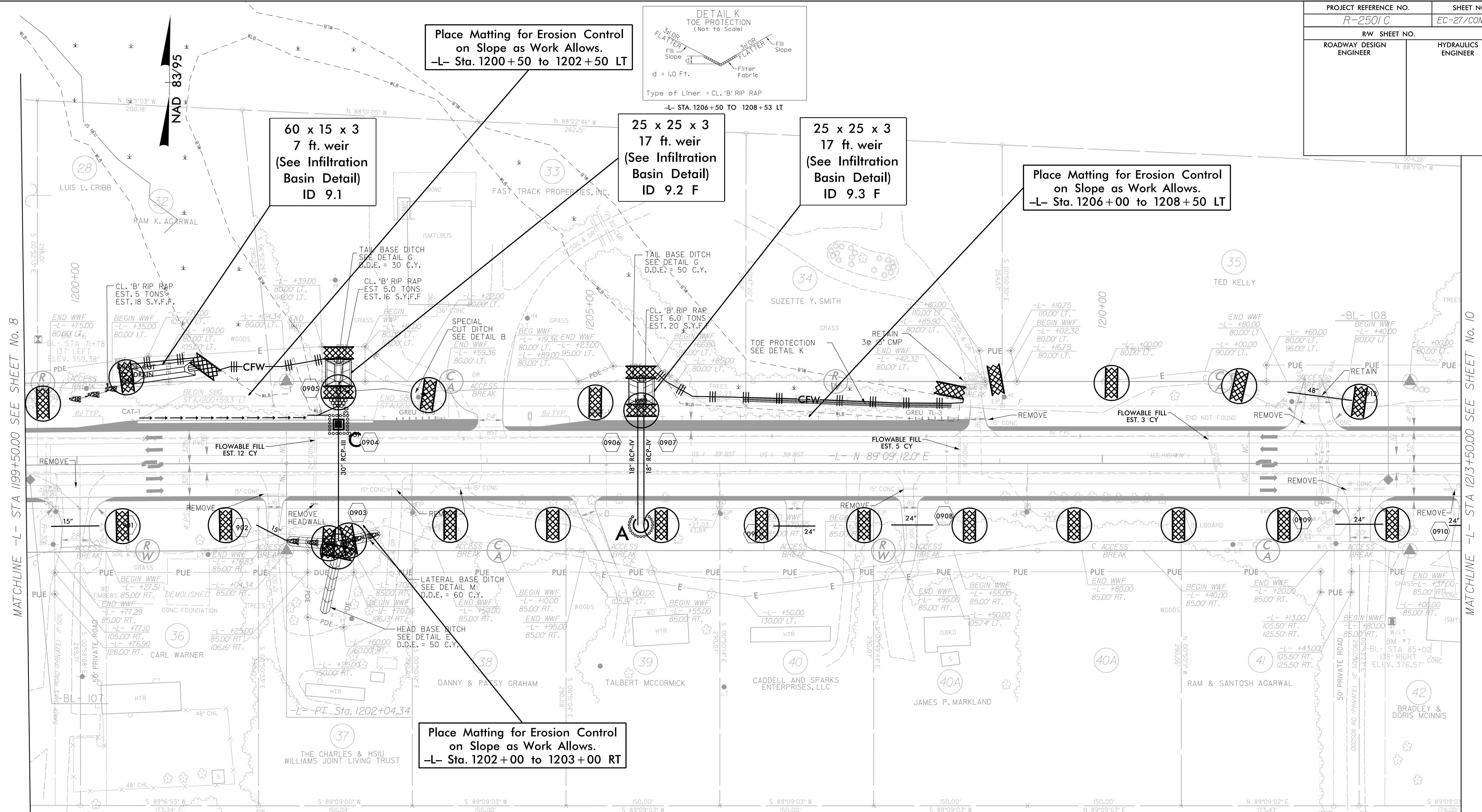


PROJECT REFERENCE NO.	SHEET NO.
R-2501 C	EC-27/CONST.9
RW SHEET NO.	
ROADWAY DESIGN ENGINEER	HYDRAULICS ENGINEER



Place Matting for Erosion Control on Slope as Work Allows.
 -L- Sta. 1200+50 to 1202+50 LT

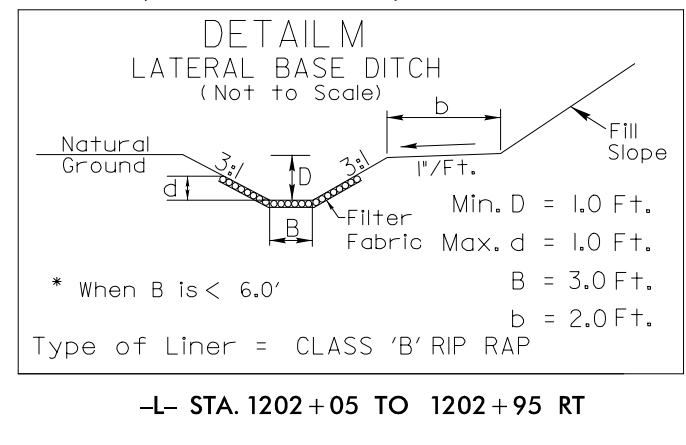
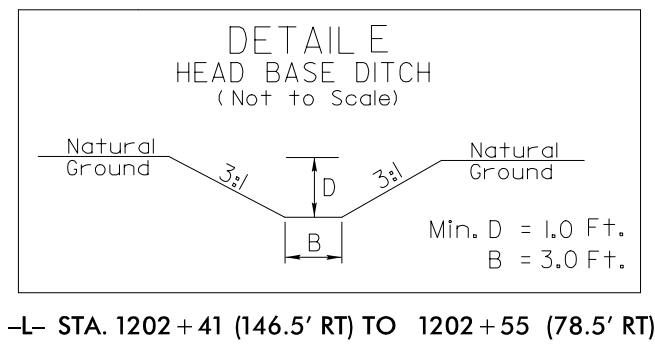
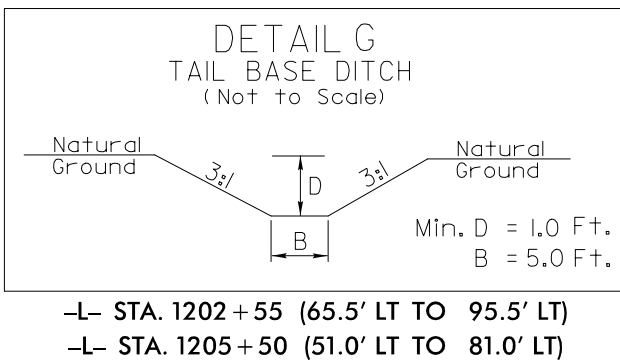
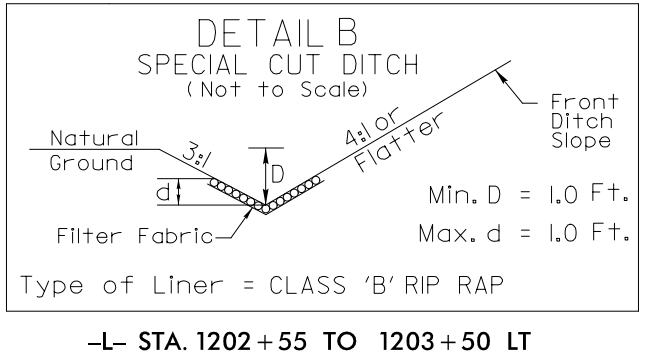
25 x 25 x 3
 17 ft. weir
 (See Infiltration Basin Detail)
 ID 9.2 F

25 x 25 x 3
 17 ft. weir
 (See Infiltration Basin Detail)
 ID 9.3 F

Place Matting for Erosion Control on Slope as Work Allows.
 -L- Sta. 1206+00 to 1208+50 LT

60 x 15 x 3
 7 ft. weir
 (See Infiltration Basin Detail)
 ID 9.1

Place Matting for Erosion Control on Slope as Work Allows.
 -L- Sta. 1202+00 to 1203+00 RT



Place Matting for Erosion Control on Slopes Adjacent to Permitted Wetlands as Work Allows.

For Slopes Excavated Greater Than 10 feet Install Matting for Erosion Control on Entire Slope as Work Allows.

MATCHLINE -L- STA 1199+50.00 SEE SHEET No. 8

MATCHLINE -L- STA 1213+50.00 SEE SHEET No. 10