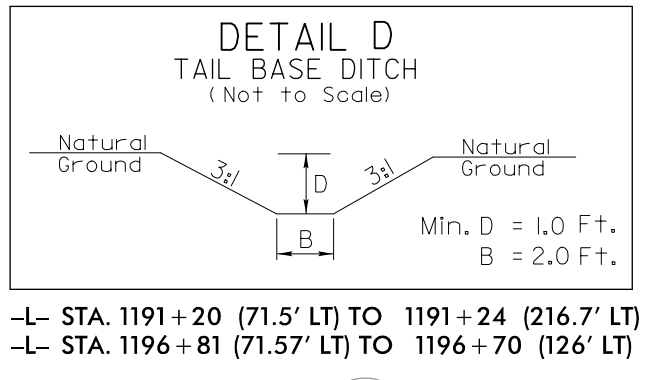
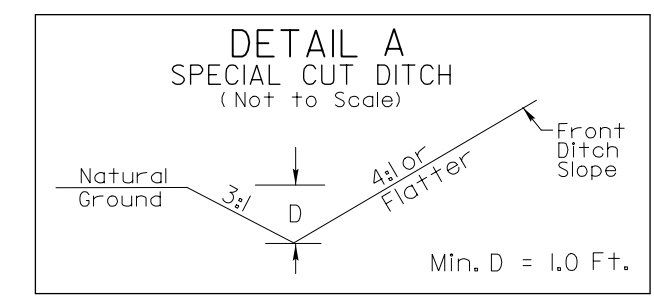
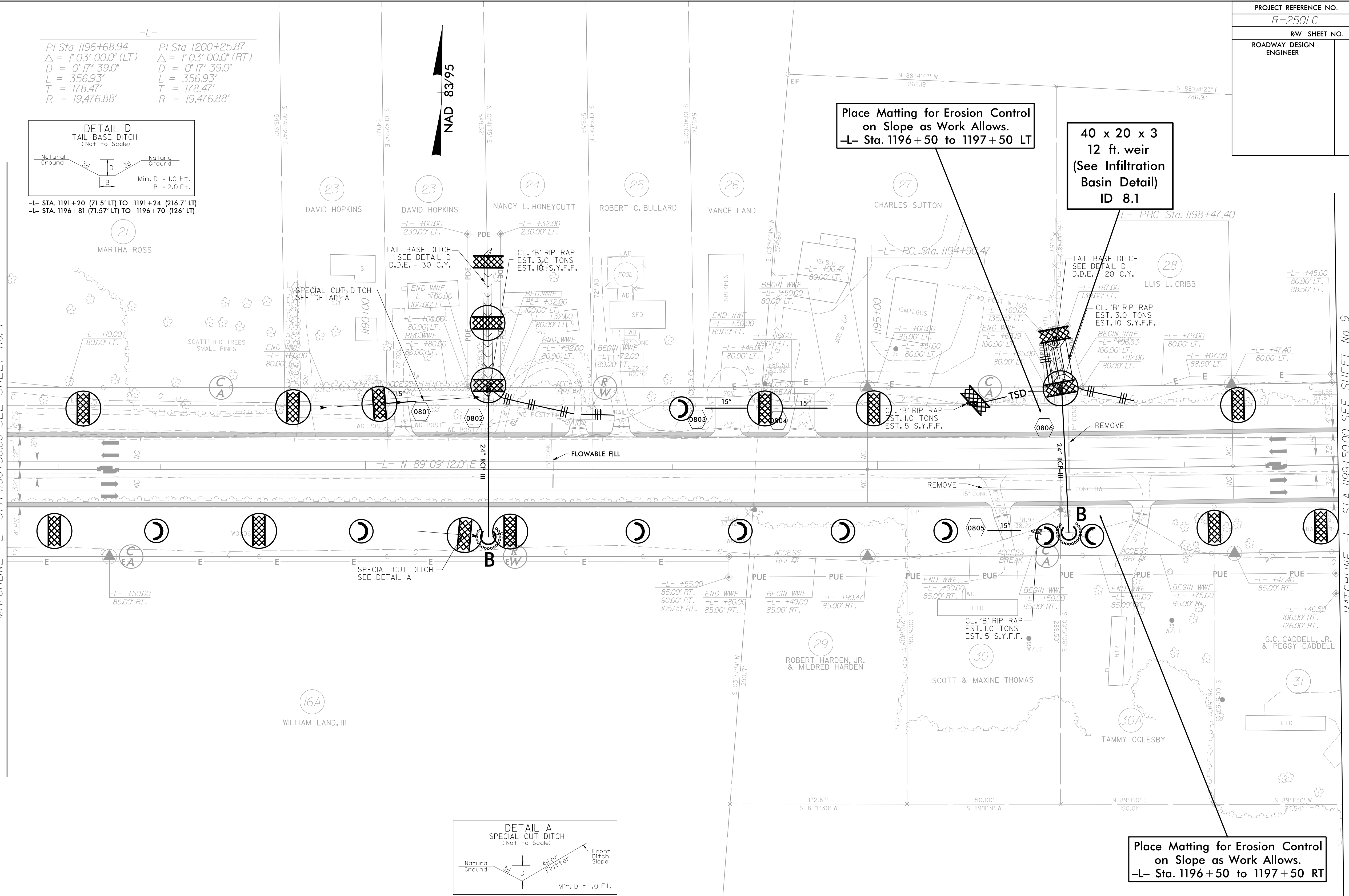


PROJECT REFERENCE NO.	SHEET NO.
R-2501 C	EC-26/CONST.B
RW SHEET NO.	
ROADWAY DESIGN ENGINEER	HYDRAULICS ENGINEER

-L-
 PI Sta 1196+68.94 PI Sta 1200+25.87
 $\Delta = 1^{\circ}03'00.0''$ (LT) $\Delta = 1^{\circ}03'00.0''$ (RT)
 $D = 0^{\circ}17'39.0''$ $D = 0^{\circ}17'39.0''$
 $L = 356.93'$ $L = 356.93'$
 $T = 178.47'$ $T = 178.47'$
 $R = 19,476.88'$ $R = 19,476.88'$



MATCHLINE -L- STA 1186+50.00 SEE SHEET No. 7



-L- STA. 1189+50 TO 1191+20 LT
 -L- STA. 1190+50 TO 1191+20 RT

Place Matting for Erosion Control
on Slope as Work Allows.
-L- Sta. 1196+50 to 1197+50 LT

40 x 20 x 3
12 ft. weir
(See Infiltration
Basin Detail)
ID 8.1

Place Matting for Erosion Control
on Slope as Work Allows.
-L- Sta. 1196+50 to 1197+50 RT

For Slopes Excavated Greater Than 10 feet
Install Matting for Erosion Control on
Entire Slope as Work Allows.

MATCHLINE -L- STA 1199+50.00 SEE SHEET No. 9