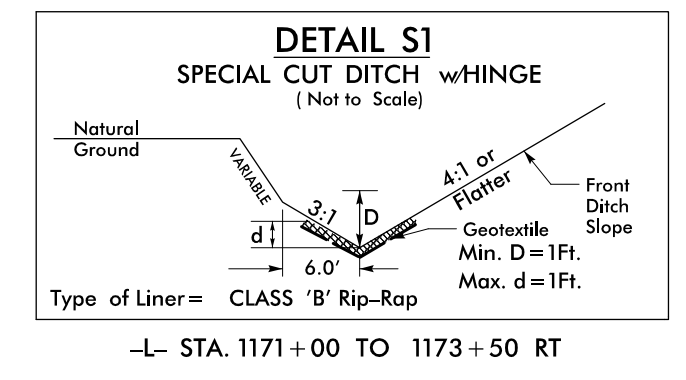
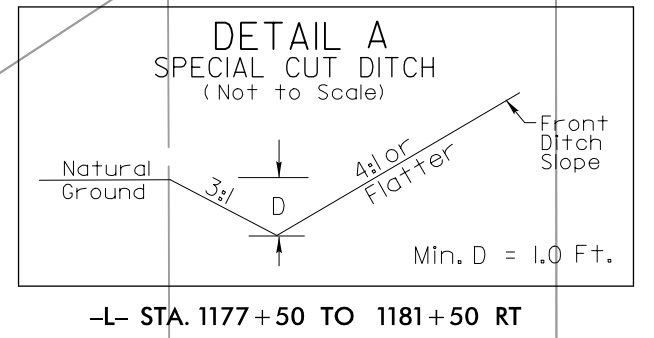
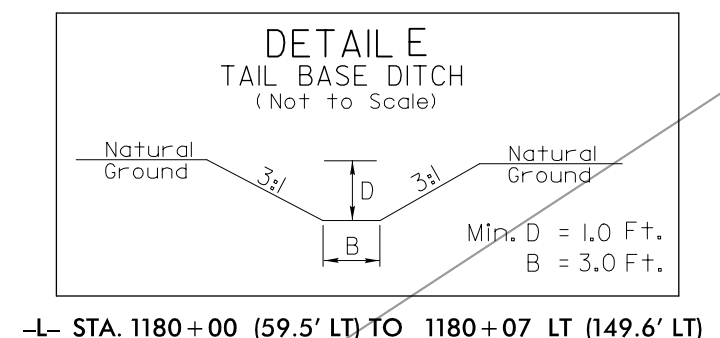


PROJECT REFERENCE NO.	SHEET NO.
R-2501 C	EC-25/CONST.7
RW SHEET NO.	
ROADWAY DESIGN ENGINEER	HYDRAULICS ENGINEER

NAD 83/95

-L-  
 PI Sta 1171+94.66  
 $\Delta = 2' 18" 27.0" (LT)$   
 $D = 0' 16" 56.0"$   
 $L = 817.61'$   
 $T = 408.86'$   
 $R = 20,301.43'$

-YI-  
 PI Sta 10+94.35  
 $\Delta = 45' 06" 42.0" (LT)$   
 $D = 38' 11" 49.9"$   
 $L = 118.10'$   
 $T = 62.30'$   
 $R = 150.00'$   
 $e = .020$

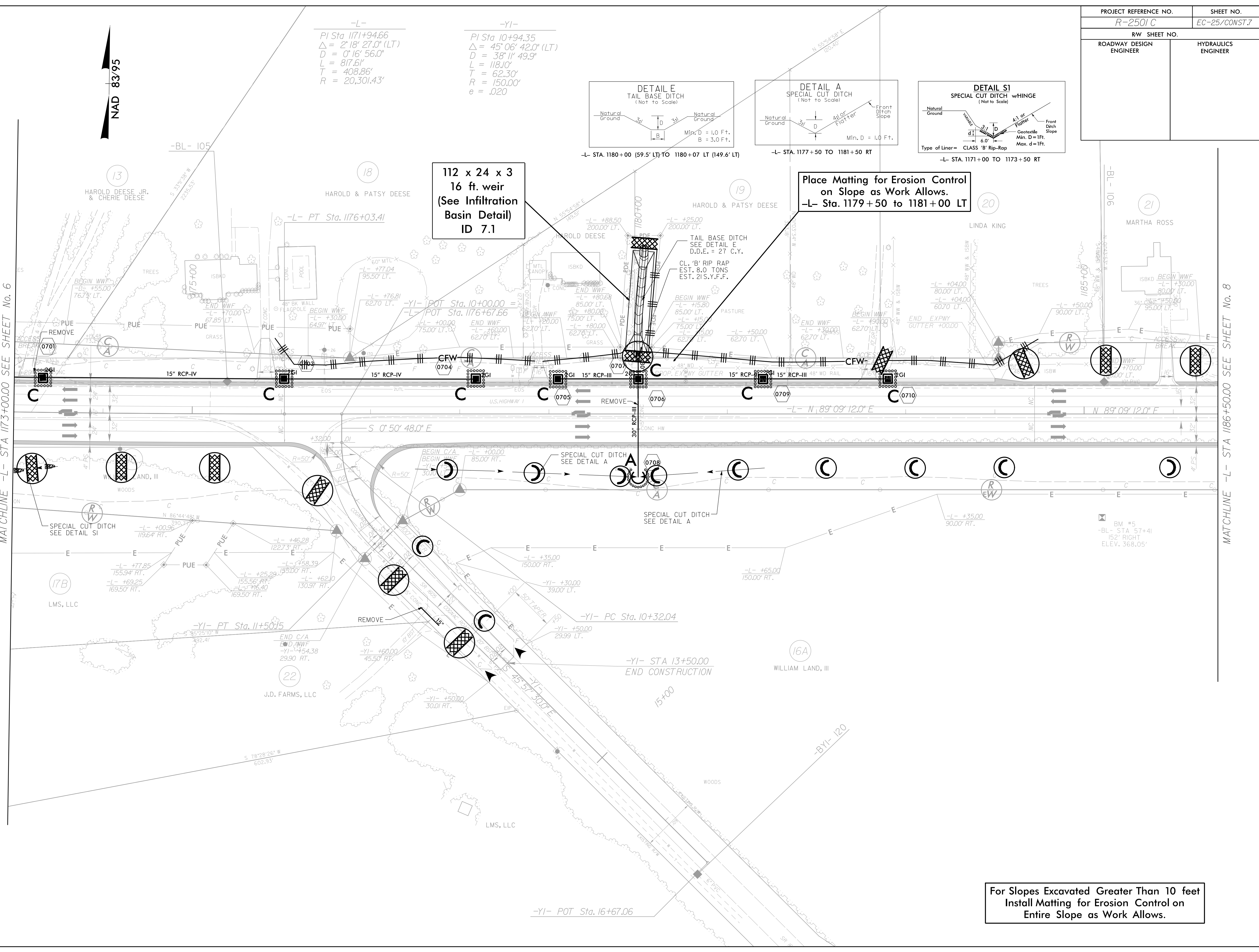


112 x 24 x 3  
 16 ft. weir  
 (See Infiltration  
 Basin Detail)  
 ID 7.1

Place Matting for Erosion Control  
 on Slope as Work Allows.  
 -L- Sta. 1179+50 to 1181+00 LT

MATCHLINE -L- STA 1173+00.00 SEE SHEET No. 6

MATCHLINE -L- STA 1186+50.00 SEE SHEET No. 8



For Slopes Excavated Greater Than 10 feet  
 Install Matting for Erosion Control on  
 Entire Slope as Work Allows.