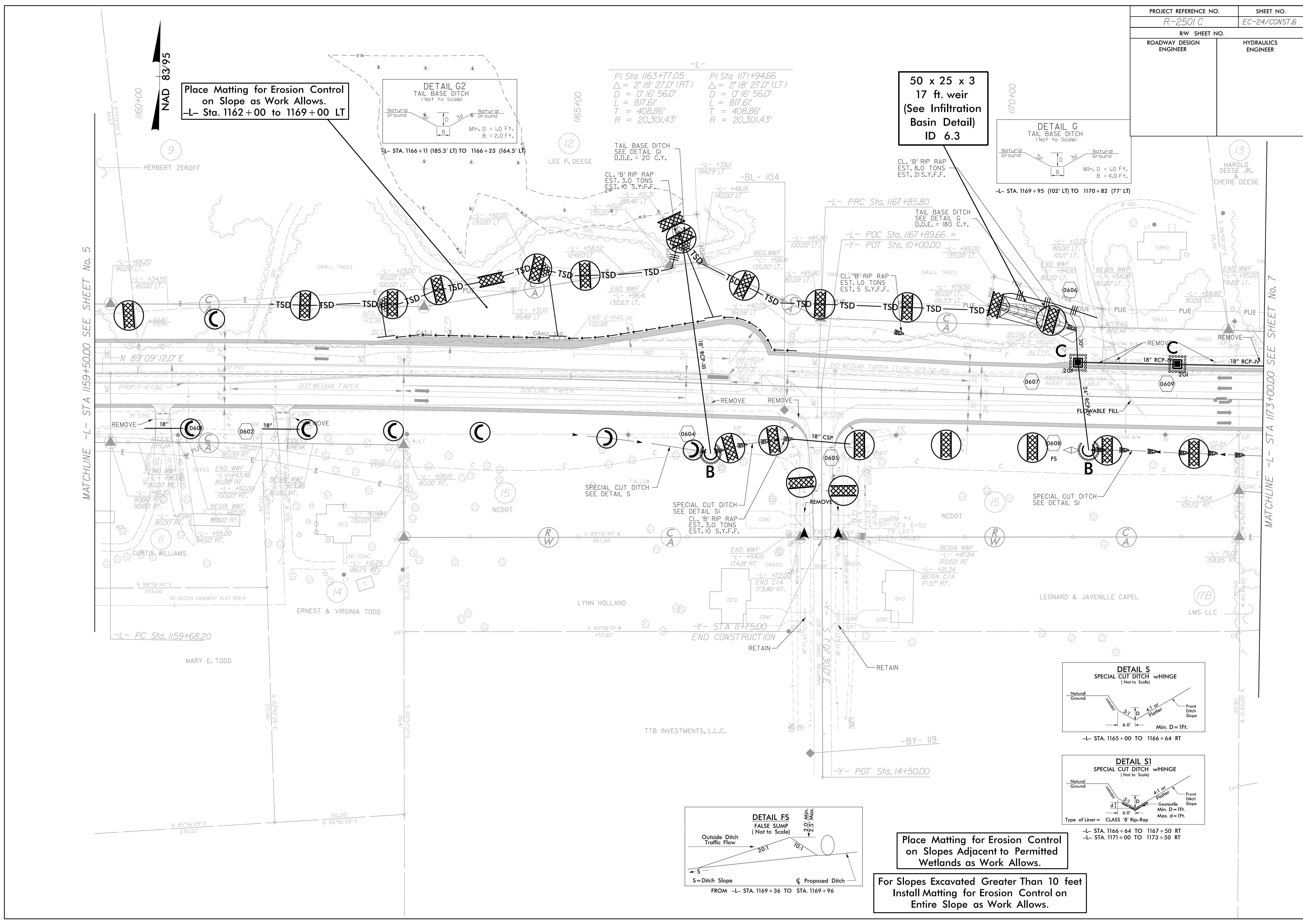


PROJECT REFERENCE NO.	SHEET NO.
R-2501C	EC-24/CONST.6
RW SHEET NO.	
ROADWAY DESIGN ENGINEER	HYDRAULICS ENGINEER

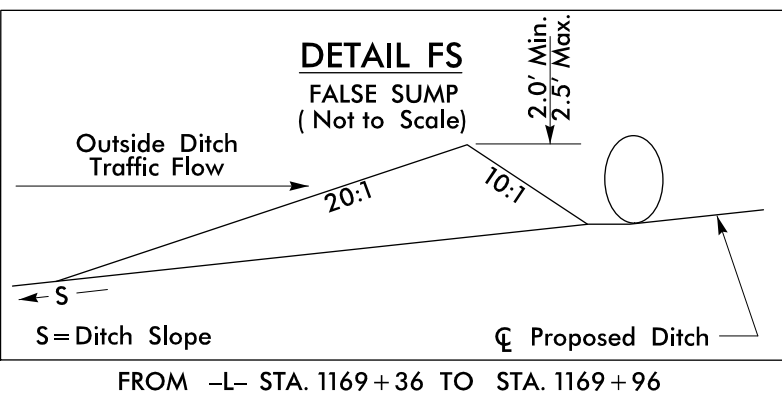
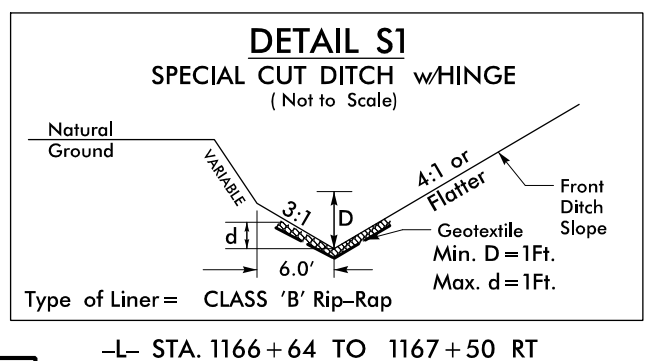
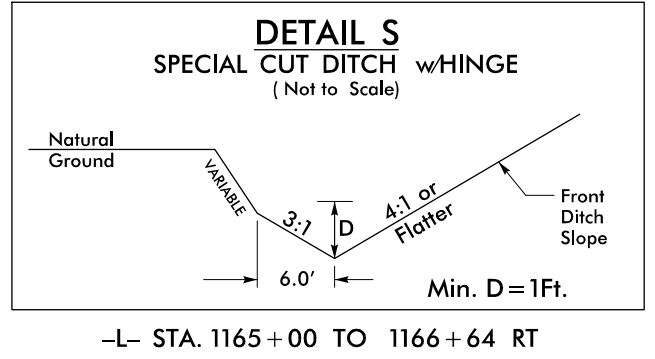
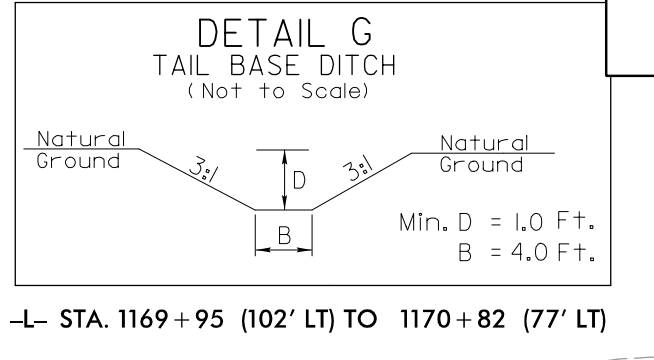
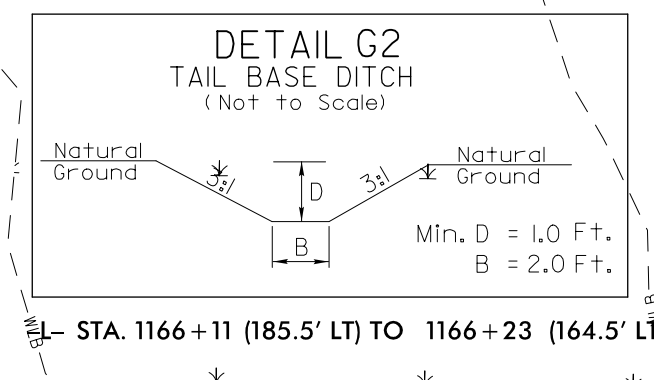
MATCHLINE -L- STA 1159+50.00 SEE SHEET No. 5

MATCHLINE -L- STA 1173+00.00 SEE SHEET No. 7



Place Matting for Erosion Control on Slope as Work Allows.  
-L- Sta. 1162+00 to 1169+00 LT

50 x 25 x 3  
17 ft. weir  
(See Infiltration Basin Detail)  
ID 6.3



Place Matting for Erosion Control on Slopes Adjacent to Permitted Wetlands as Work Allows.

For Slopes Excavated Greater Than 10 feet Install Matting for Erosion Control on Entire Slope as Work Allows.

PI Sta 1163+77.05  
 $\Delta = 2' 18'' 27.0'' (RT)$   
 $D = 0' 16'' 56.0''$   
 $L = 817.61'$   
 $T = 408.86'$   
 $R = 20,301.43'$

PI Sta 1171+94.66  
 $\Delta = 2' 18'' 27.0'' (LT)$   
 $D = 0' 16'' 56.0''$   
 $L = 817.61'$   
 $T = 408.86'$   
 $R = 20,301.43'$

-L- PC Sta. 1159+68.20

-Y- STA 1175.00  
END CONSTRUCTION

-Y- POT Sta. 14+50.00

N 85°36'29" E 230.52'  
N 85°36'28" E 150.00'

-L- 75.00  
158.85 RT

N 88°58'40" E 259.00'

S 89°06'40" W 457.84'

-L- 121.34  
170.55 RT

N 88°58'40" E 259.00'

S 89°06'40" W 457.84'

-L- 121.34  
170.55 RT

N 88°58'40" E 259.00'

S 89°06'40" W 457.84'

-L- 121.34  
170.55 RT

N 88°58'40" E 259.00'

S 89°06'40" W 457.84'

-L- 121.34  
170.55 RT

N 88°58'40" E 259.00'

S 89°06'40" W 457.84'

-L- 121.34  
170.55 RT

N 88°58'40" E 259.00'

S 89°06'40" W 457.84'

-L- 121.34  
170.55 RT

N 88°58'40" E 259.00'

S 89°06'40" W 457.84'

-L- 121.34  
170.55 RT

N 88°58'40" E 259.00'

S 89°06'40" W 457.84'

-L- 121.34  
170.55 RT

N 88°58'40" E 259.00'

S 89°06'40" W 457.84'

-L- 121.34  
170.55 RT

N 88°58'40" E 259.00'

S 89°06'40" W 457.84'

-L- 121.34  
170.55 RT

N 88°58'40" E 259.00'

S 89°06'40" W 457.84'

-L- 121.34  
170.55 RT

N 88°58'40" E 259.00'

S 89°06'40" W 457.84'

-L- 121.34  
170.55 RT

N 88°58'40" E 259.00'

S 89°06'40" W 457.84'

-L- 121.34  
170.55 RT

N 88°58'40" E 259.00'

S 89°06'40" W 457.84'

-L- 121.34  
170.55 RT

N 88°58'40" E 259.00'

S 89°06'40" W 457.84'

-L- 121.34  
170.55 RT