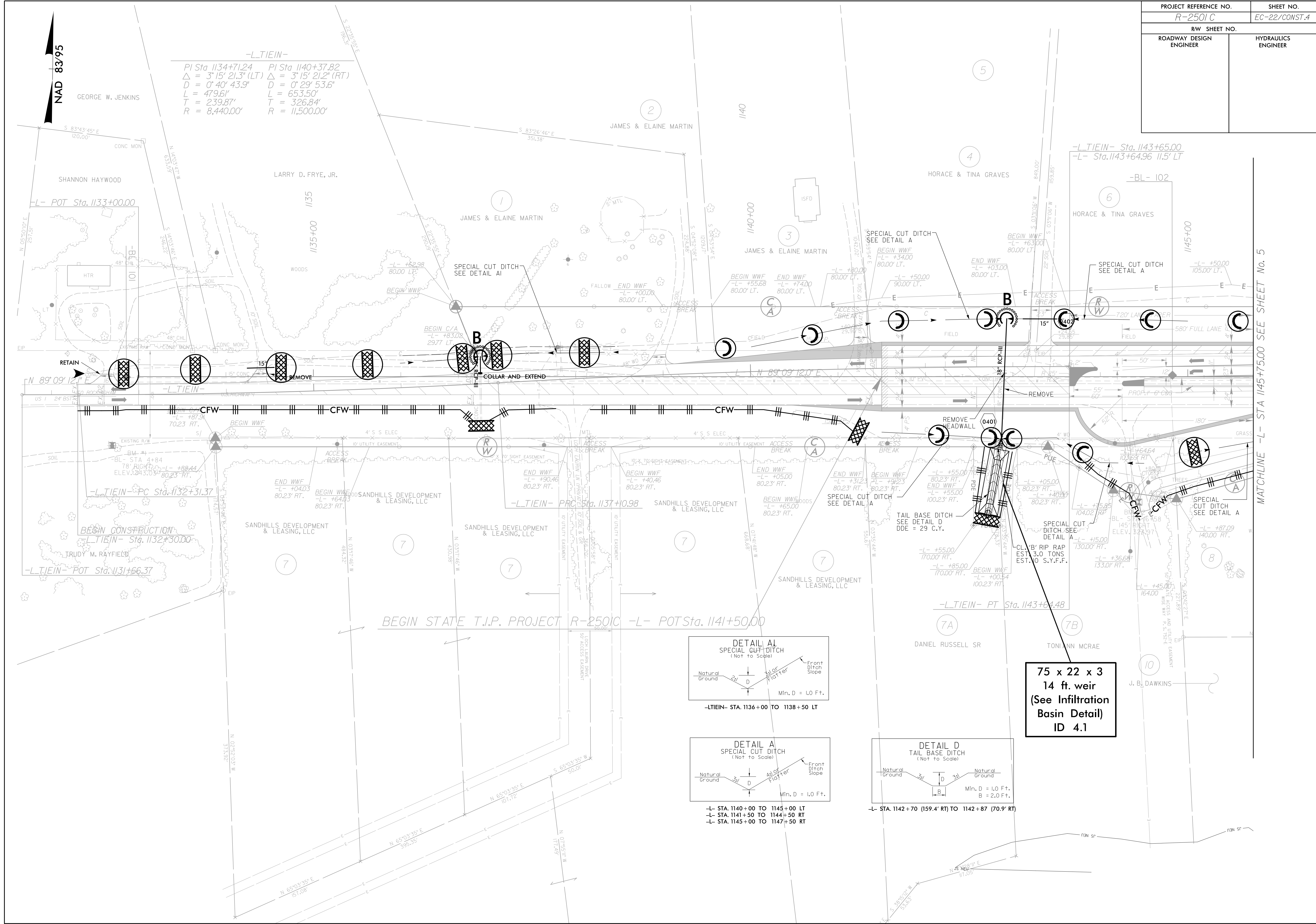
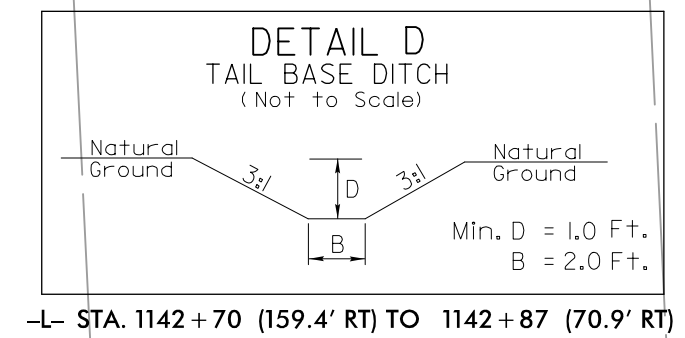
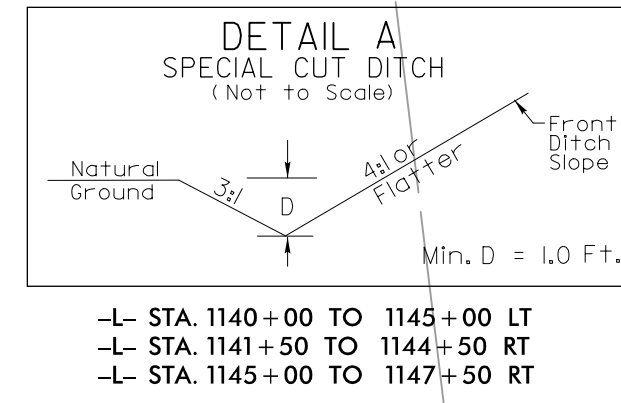
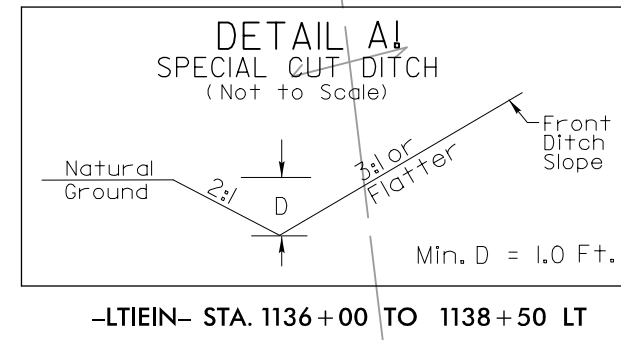


PROJECT REFERENCE NO.	SHEET NO.
R-2501C	EC-22/CONST.4
RW SHEET NO.	
ROADWAY DESIGN ENGINEER	HYDRAULICS ENGINEER



NAD 83/95

-L-TIEIN-
 PI Sta 1134+71.24 PI Sta 1140+37.82
 $\Delta = 3^\circ 15' 21.3''$ (LT) $\Delta = 3^\circ 15' 21.2''$ (RT)
 $D = 0' 40' 43.9''$ $D = 0' 29' 53.6''$
 $L = 479.61'$ $L = 653.50'$
 $T = 239.87'$ $T = 326.84'$
 $R = 8,440.00'$ $R = 11,500.00'$



75 x 22 x 3
14 ft. weir
 (See Infiltration Basin Detail ID 4.1)

MATCHLINE -L- STA 1145+75.00 SEE SHEET No. 5