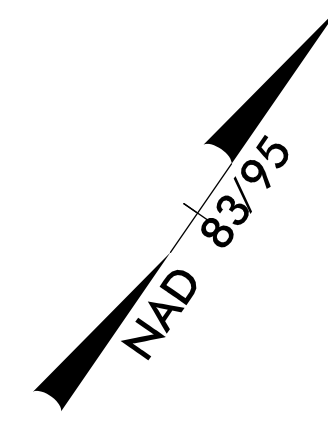
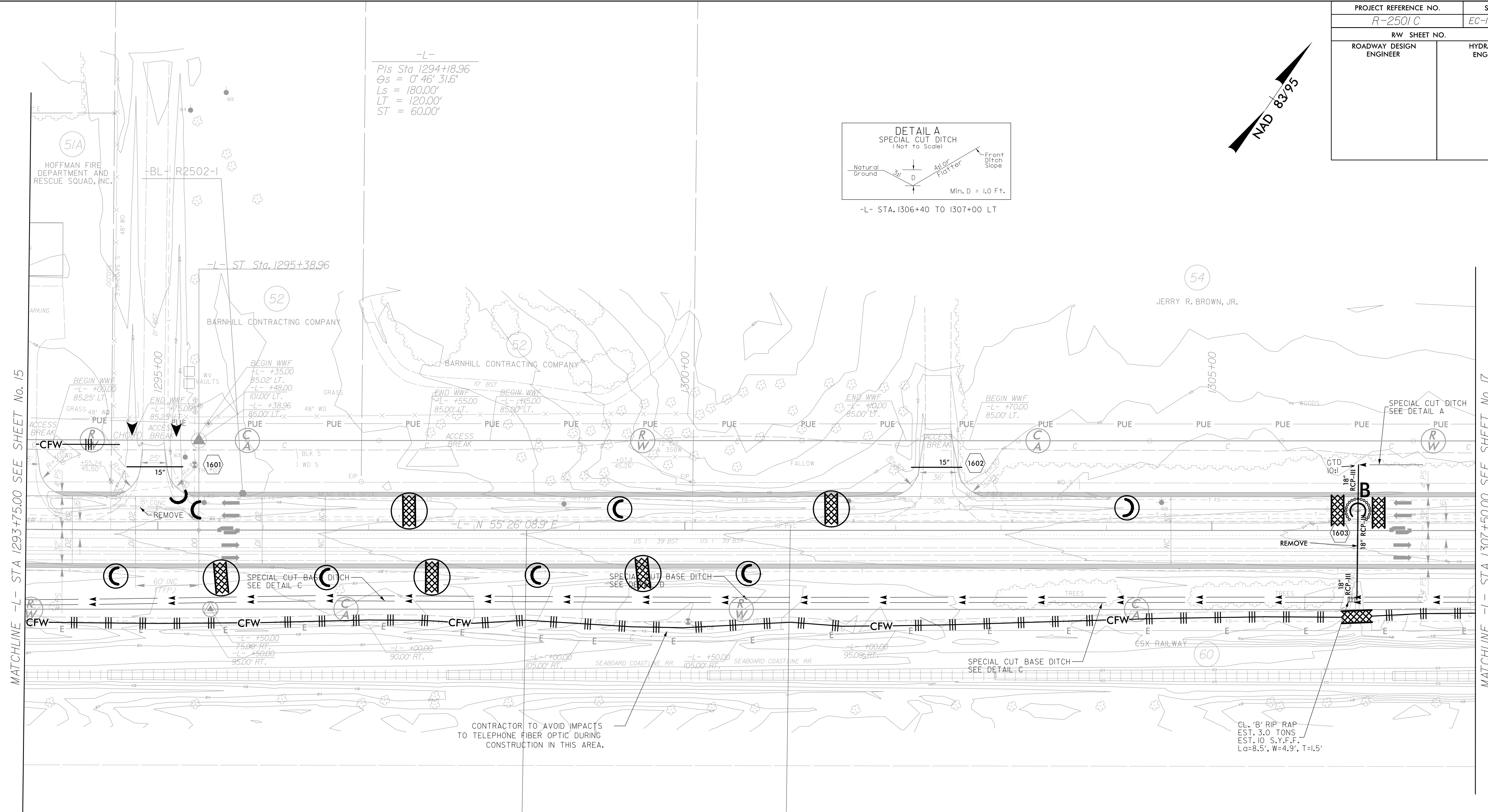
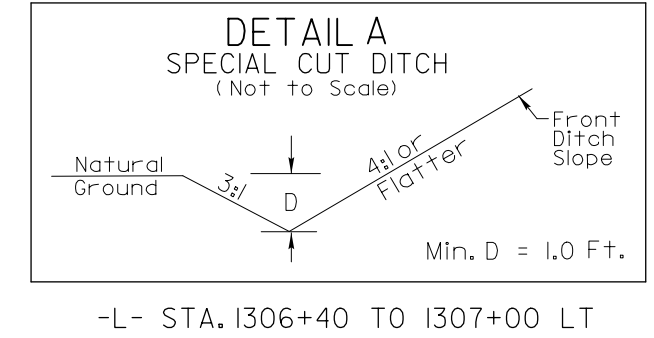


PROJECT REFERENCE NO. R-2501 C	SHEET NO. EC-17/CONST.16
RW SHEET NO.	
ROADWAY DESIGN ENGINEER	HYDRAULICS ENGINEER

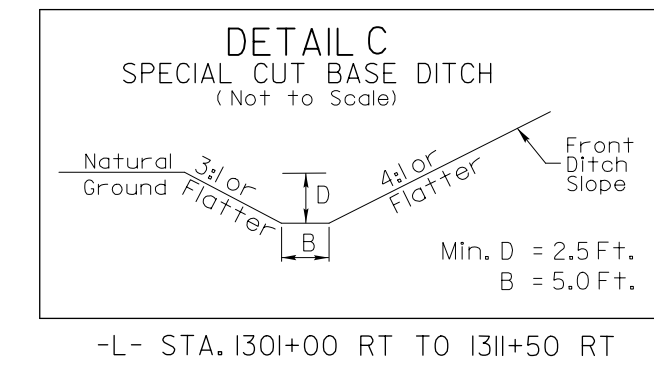
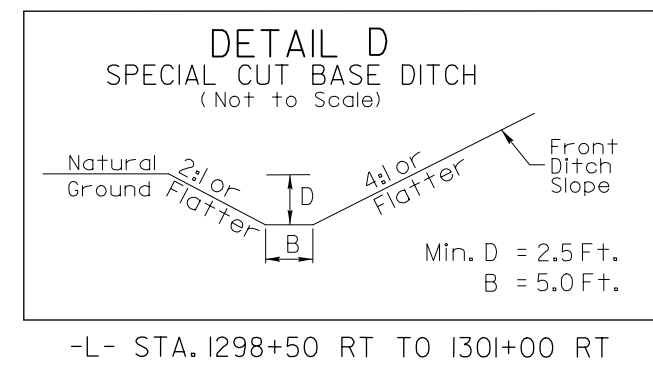


-L-  
Pls Sta 1294+18.96  
Os = 0' 46' 31.6"  
Ls = 180.00'  
LT = 120.00'  
ST = 60.00'



MATCHLINE -L- STA 1293+75.00 SEE SHEET No. 15

MATCHLINE -L- STA 1307+50.00 SEE SHEET No. 17



CONTRACTOR TO AVOID IMPACTS TO TELEPHONE FIBER OPTIC DURING CONSTRUCTION IN THIS AREA.

CL. 'B' RIP RAP EST. 3.0 TONS EST. 10' S.Y.F.F. Lq=8.5', W=4.9', T=1.5'

N C WILDLIFE RESOURCES COMMISSION

N C WILDLIFE RESOURCES COMMISSION

CLEARING AND GRUBBING EROSION CONTROL FOR CONSTRUCTION SHEET 16

NOTE: PLACE TEMPORARY ROCK SEDIMENT DAMS TYPE - B AND TEMPORARY ROCK SILT CHECKS TYPE - A AT DRAINAGE OUTLETS.