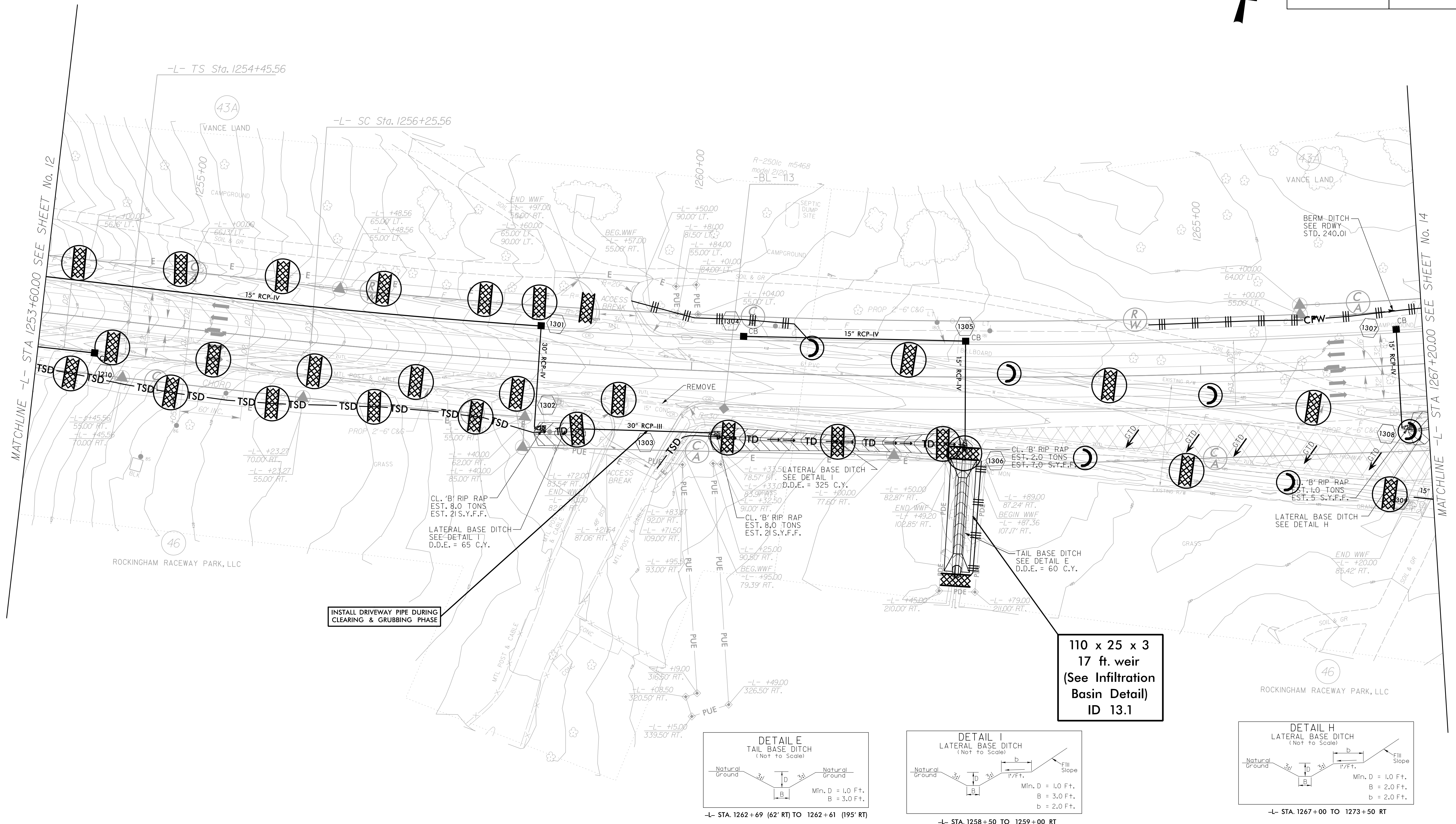


PROJECT REFERENCE NO.	SHEET NO.
R-2501C	EC-13/CONSTJ3
RW SHEET NO.	
ROADWAY DESIGN ENGINEER	HYDRAULICS ENGINEER

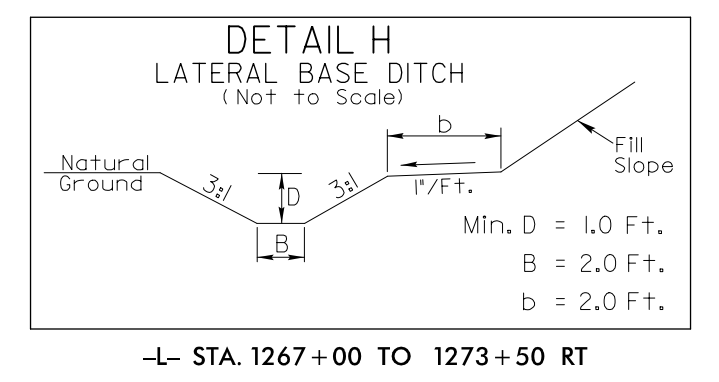
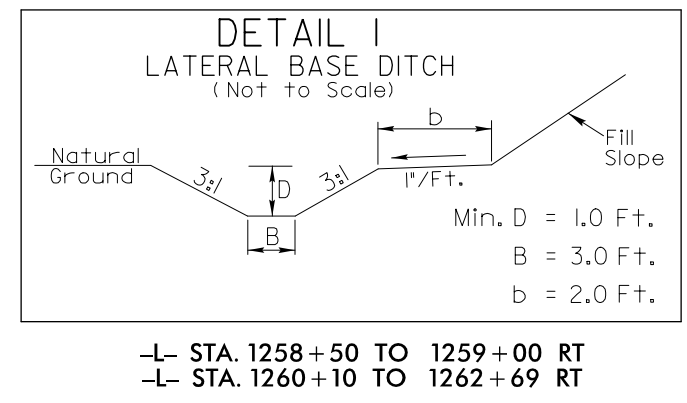
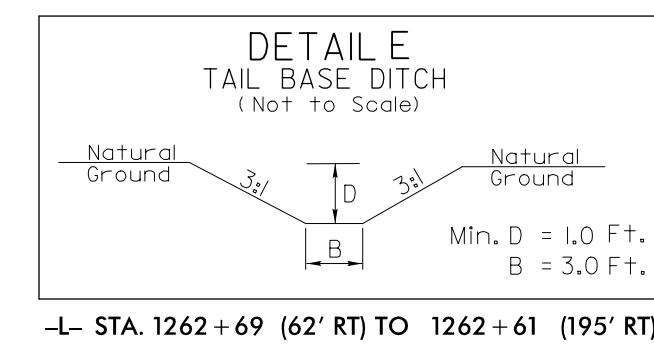
NAD 83/95

-L-
 Pls Sta 1255+65.56 PI Sta 1275+42.89
 $\Theta_s = 0^\circ 46' 31.8''$ $\Delta = 32^\circ 10' 00.0''$ (LT)
 $L_s = 180.00'$ $D = 0^\circ 51' 41.7''$
 $LT = 120.00'$ $L = 3,733.40$
 $ST = 60.00'$ $T = 1,917.33'$
 $R = 6,650.00'$



INSTALL DRIVEWAY PIPE DURING CLEARING & GRUBBING PHASE

110 x 25 x 3
 17 ft. weir
 (See Infiltration Basin Detail)
 ID 13.1



CLEARING AND GRUBBING
 EROSION CONTROL FOR
 CONSTRUCTION SHEET 13

NOTE:
 PLACE TEMPORARY ROCK SEDIMENT DAMS TYPE - B
 AND TEMPORARY ROCK SILT CHECKS TYPE - A AT
 DRAINAGE OUTLETS.