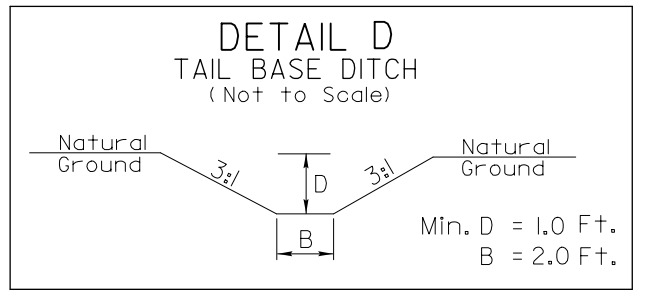


PROJECT REFERENCE NO.	SHEET NO.
R-2501 C	EC-08/CONST.B
RW SHEET NO.	
ROADWAY DESIGN ENGINEER	HYDRAULICS ENGINEER

-L-

PI Sta 1196+68.94	PI Sta 1200+25.87
$\Delta = 1^{\circ}03'00.0"$ (LT)	$\Delta = 1^{\circ}03'00.0"$ (RT)
$D = 0^{\circ}17'39.0"$	$D = 0^{\circ}17'39.0"$
$L = 356.93'$	$L = 356.93'$
$T = 178.47'$	$T = 178.47'$
$R = 19,476.88'$	$R = 19,476.88'$



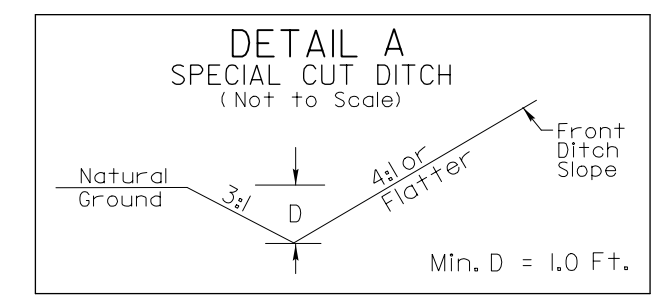
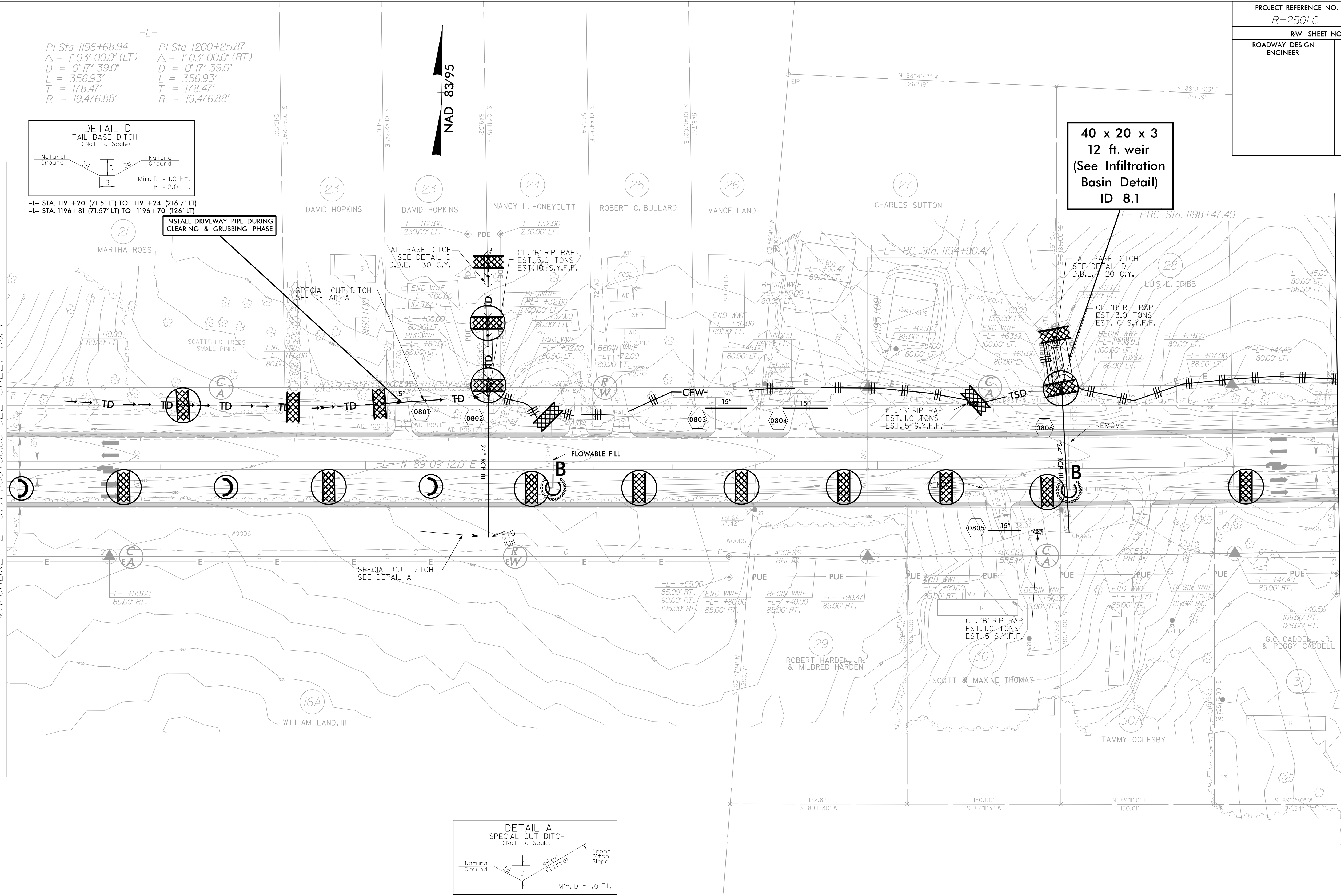
-L- STA. 1191+20 (71.5' LT) TO 1191+24 (216.7' LT)
 -L- STA. 1196+81 (71.57' LT) TO 1196+70 (126' LT)

INSTALL DRIVEWAY PIPE DURING CLEARING & GRUBBING PHASE

40 x 20 x 3
 12 ft. weir
 (See Infiltration Basin Detail)
 ID 8.1

MATCHLINE -L- STA 1186+50.00 SEE SHEET No. 7

MATCHLINE -L- STA 1199+50.00 SEE SHEET No. 9



-L- STA. 1189+50 TO 1191+20 LT
 -L- STA. 1190+50 TO 1191+20 RT

CLEARING AND GRUBBING EROSION CONTROL FOR CONSTRUCTION SHEET 8

NOTE: PLACE TEMPORARY ROCK SEDIMENT DAMS TYPE - B AND TEMPORARY ROCK SILT CHECKS TYPE - A AT DRAINAGE OUTLETS.