

PROJECT REFERENCE NO.		SHEET NO.	
R-2501 C		EC-07/CONST.7	
RW SHEET NO.			
ROADWAY DESIGN ENGINEER		HYDRAULICS ENGINEER	

NAD 83/95

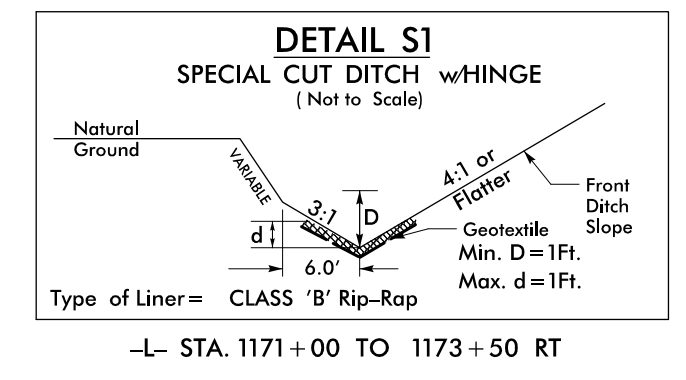
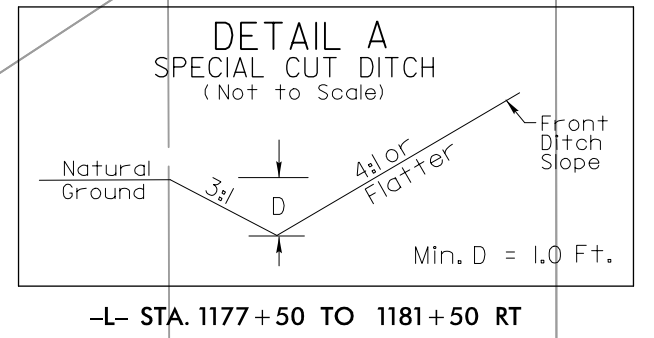
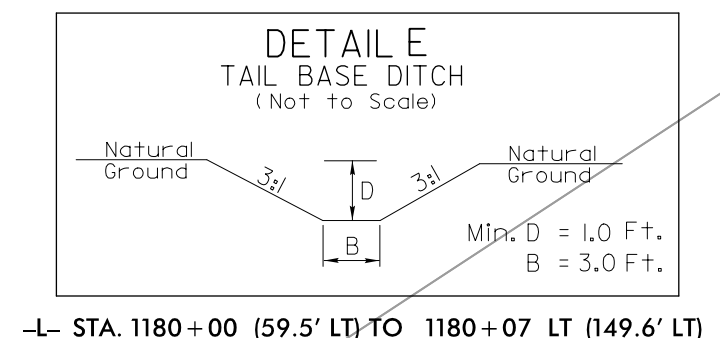
-L-
 PI Sta 1171+94.66
 $\Delta = 2^{\circ}18'27.0"$ (LT)
 $D = 0^{\circ}16'56.0"$
 $L = 817.61'$
 $T = 408.86'$
 $R = 20,301.43'$

-YI-
 PI Sta 10+94.35
 $\Delta = 45^{\circ}06'42.0"$ (LT)
 $D = 38^{\circ}11'49.9"$
 $L = 118.10'$
 $T = 62.30'$
 $R = 150.00'$
 $e = .020$

-DETOUR-
 PI Sta 21+13.26
 $\Delta = 2^{\circ}18'27.0"$ (LT)
 $D = 0^{\circ}16'51.2"$
 $L = 821.47'$
 $T = 410.79'$
 $R = 20,397.43'$

PI Sta 31+01.18
 $\Delta = 19^{\circ}07'20.4"$ (LT)
 $D = 11^{\circ}14'04.1"$
 $L = 170.21'$
 $T = 85.90'$
 $R = 510.00'$
 $E = AS$

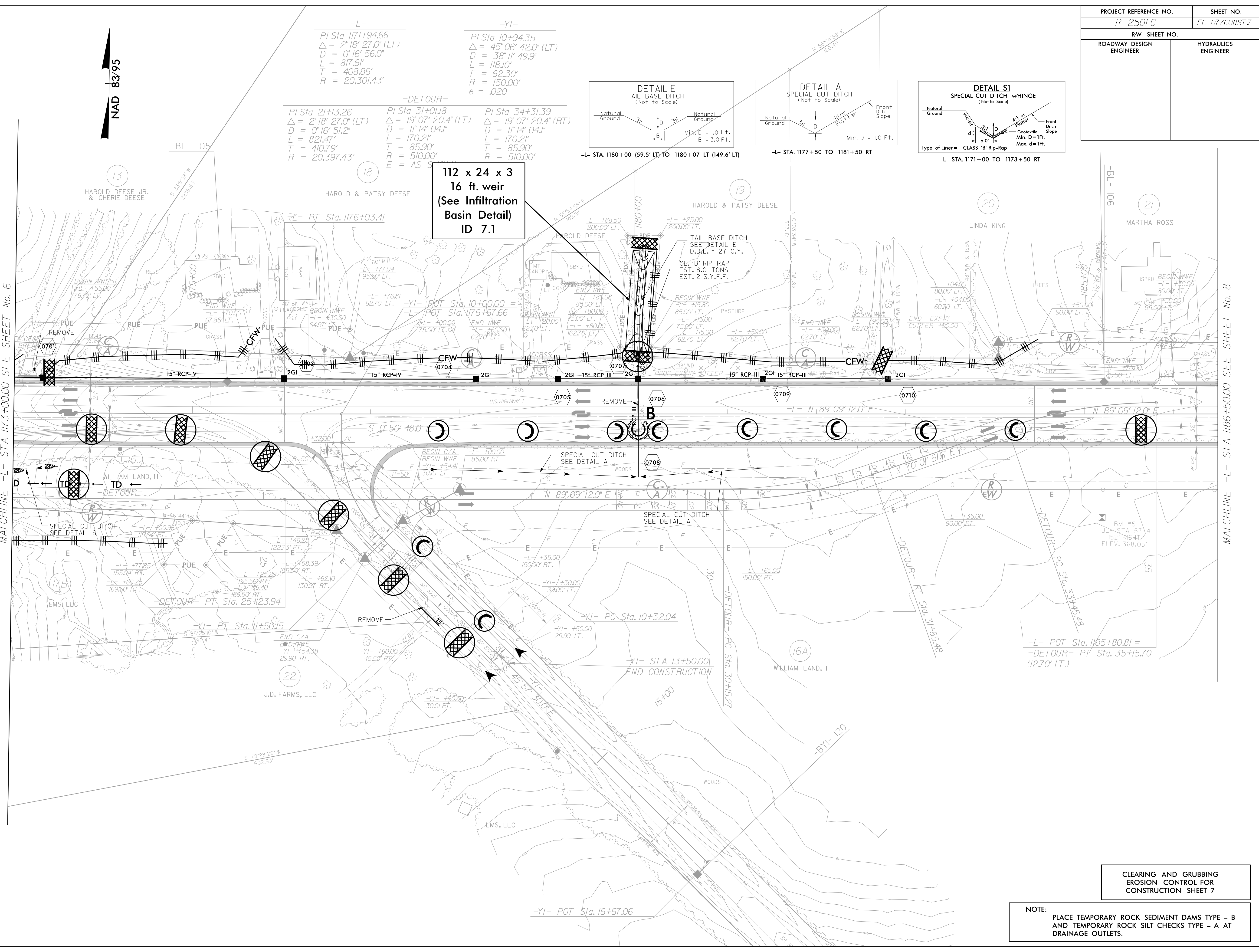
PI Sta 34+31.39
 $\Delta = 19^{\circ}07'20.4"$ (RT)
 $D = 11^{\circ}14'04.1"$
 $L = 170.21'$
 $T = 85.90'$
 $R = 510.00'$



112 x 24 x 3
 16 ft. weir
 (See Infiltration
 Basin Detail)
 ID 7.1

MATCHLINE -L- STA 1173+00.00 SEE SHEET No. 6

MATCHLINE -L- STA 1186+50.00 SEE SHEET No. 8



CLEARING AND GRUBBING
 EROSION CONTROL FOR
 CONSTRUCTION SHEET 7

NOTE:
 PLACE TEMPORARY ROCK SEDIMENT DAMS TYPE - B
 AND TEMPORARY ROCK SILT CHECKS TYPE - A AT
 DRAINAGE OUTLETS.