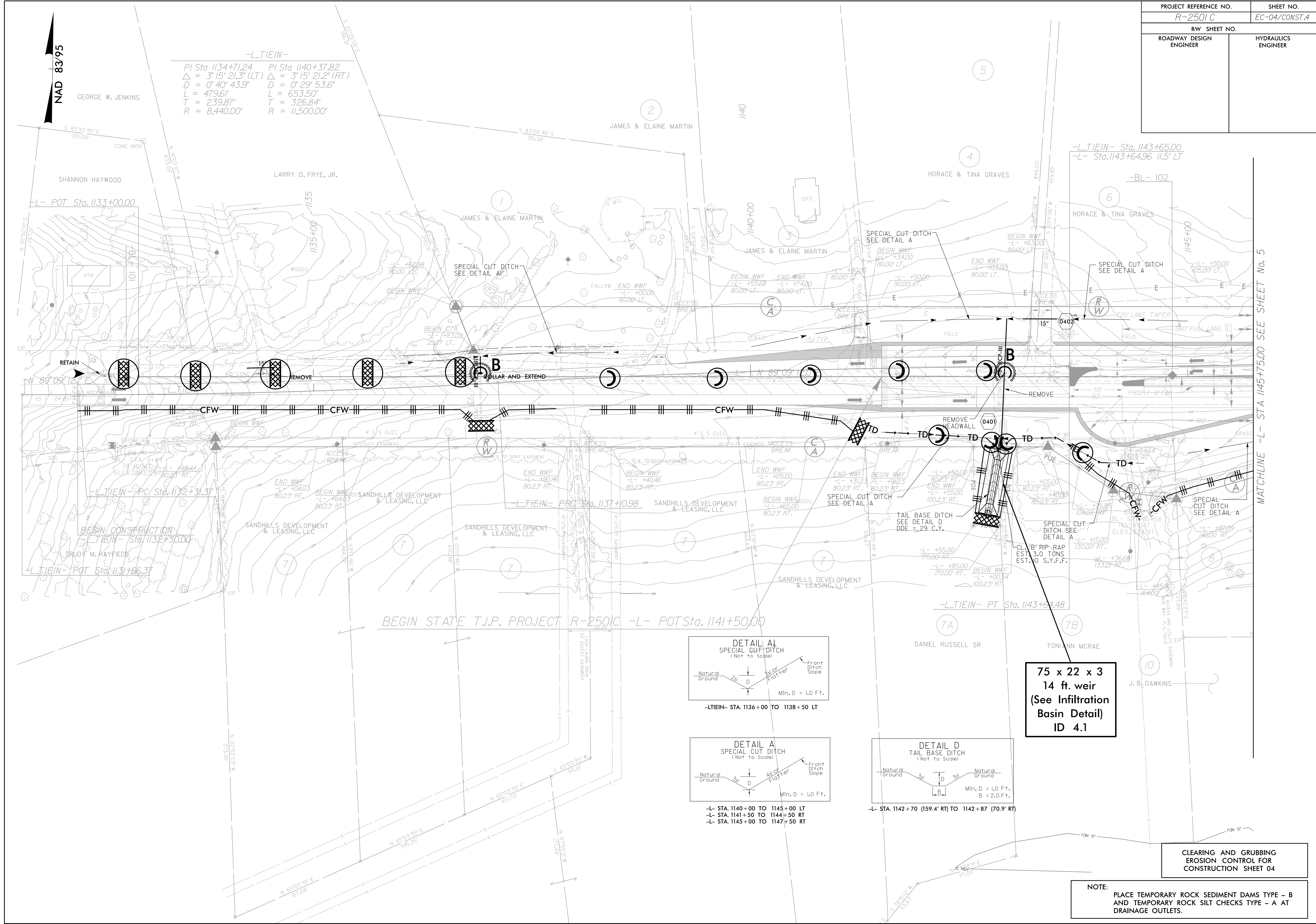
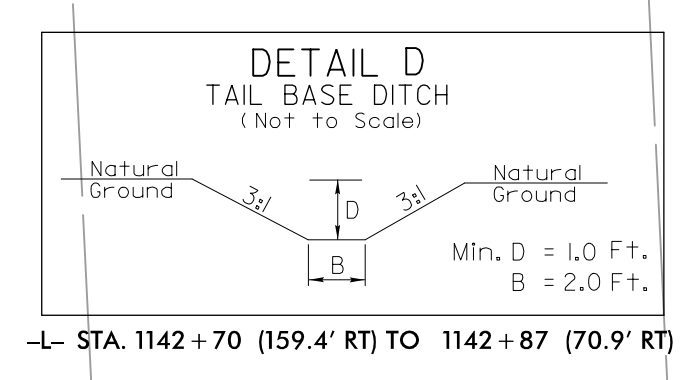
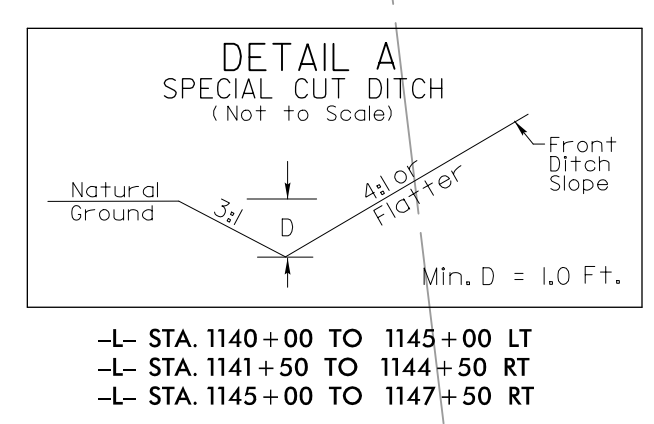
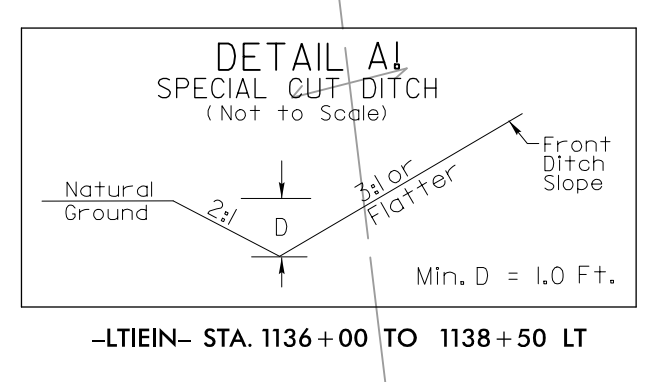


PROJECT REFERENCE NO.	SHEET NO.
R-2501C	EC-04/CONST.4
RW SHEET NO.	
ROADWAY DESIGN ENGINEER	HYDRAULICS ENGINEER



-LTIEIN-

PI Sta 1134+71.24	PI Sta 1140+37.82
$\Delta = 3' 15'' 21.3''$ (LT)	$\Delta = 3' 15'' 21.2''$ (RT)
$D = 0' 40'' 43.9''$	$D = 0' 29'' 53.6''$
$L = 479.61'$	$L = 653.50'$
$T = 239.87'$	$T = 326.84'$
$R = 8,440.00'$	$R = 11,500.00'$



75 x 22 x 3
14 ft. weir
(See Infiltration Basin Detail) ID 4.1

CLEARING AND GRUBBING EROSION CONTROL FOR CONSTRUCTION SHEET 04

NOTE:
PLACE TEMPORARY ROCK SEDIMENT DAMS TYPE - B AND TEMPORARY ROCK SILT CHECKS TYPE - A AT DRAINAGE OUTLETS.

MATCHLINE -L- STA 1145+75.00 SEE SHEET No. 5