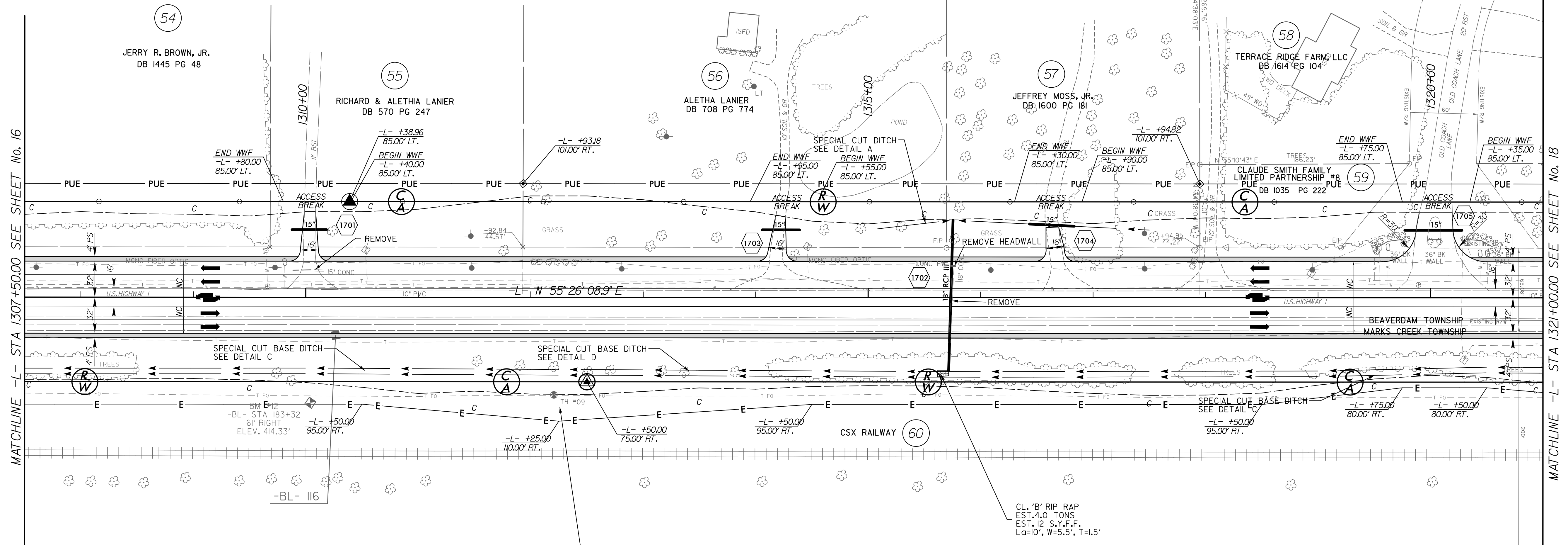
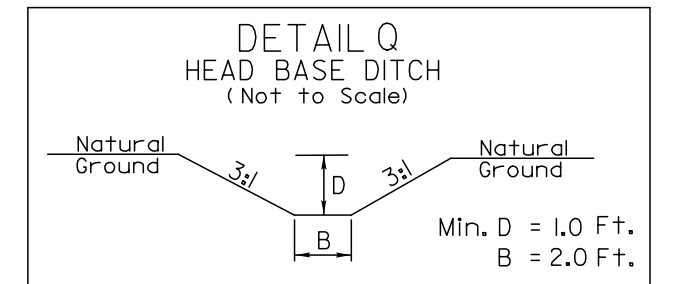
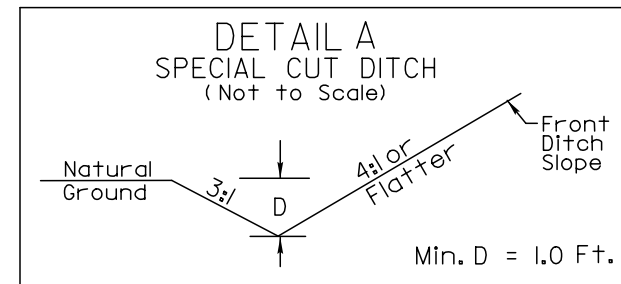
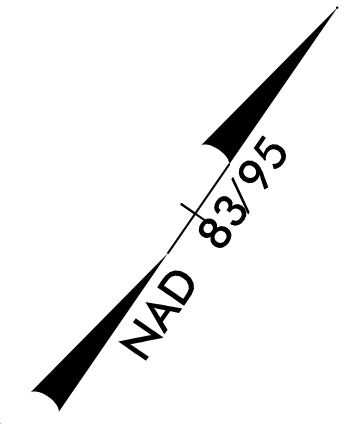


8/17/99

PROJECT REFERENCE NO. R-2501C	SHEET NO. 17
RW SHEET NO.	
ROADWAY DESIGN ENGINEER	HYDRAULICS ENGINEER
DOCUMENT NOT CONSIDERED FINAL UNLESS ALL SIGNATURES COMPLETED	

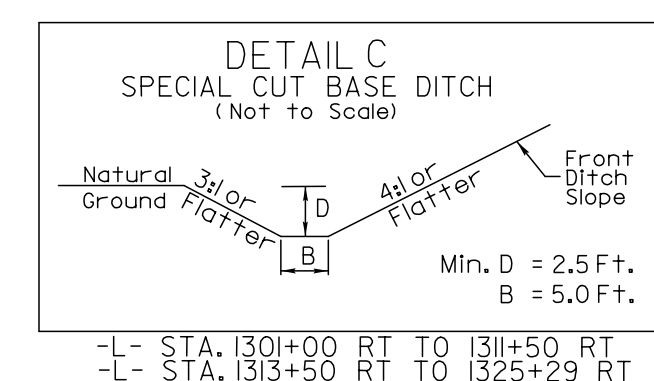
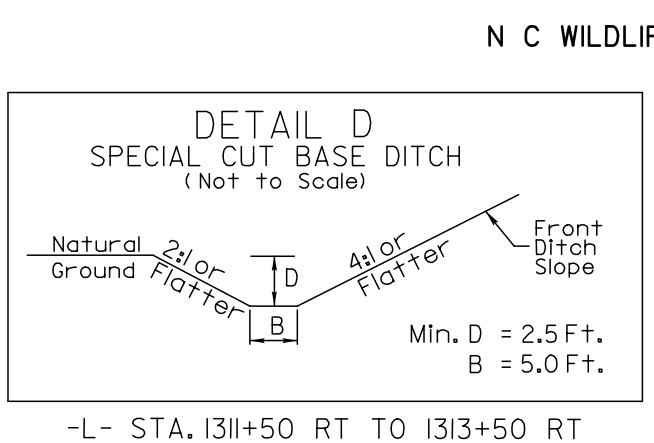


MATCHLINE -L- STA 1307+50.00 SEE SHEET No. 16

MATCHLINE -L- STA 1321+00.00 SEE SHEET No. 18

REVISIONS

CONTRACTOR TO AVOID IMPACTS TO TELEPHONE FIBER OPTIC DURING CONSTRUCTION IN THIS AREA.



NOTE: FROM 1319+00 TO 1320+75 THE 2.5' MINIMUM DITCH DEPTH REQUIREMENT CANNOT BE ATTAINED THEREFORE THE PROPOSED DITCH GRADES ON THE PROFILE SHOULD BE MAINTAINED. ANY DITCH OVERFLOW WILL HAVE NO ADVERSE IMPACT TO THE ROADWAY OR THE RAILROAD PROPERTY.

NOTE: ALL DRIVEWAY RADII ARE 10', UNLESS OTHERWISE NOTED. FOR -L- PROFILE SEE SHEET No. 25 & 26.

02-FEB-2018 17:44:14 N:\Roadway\Projects\172501C.RDY_PSH17.dgn