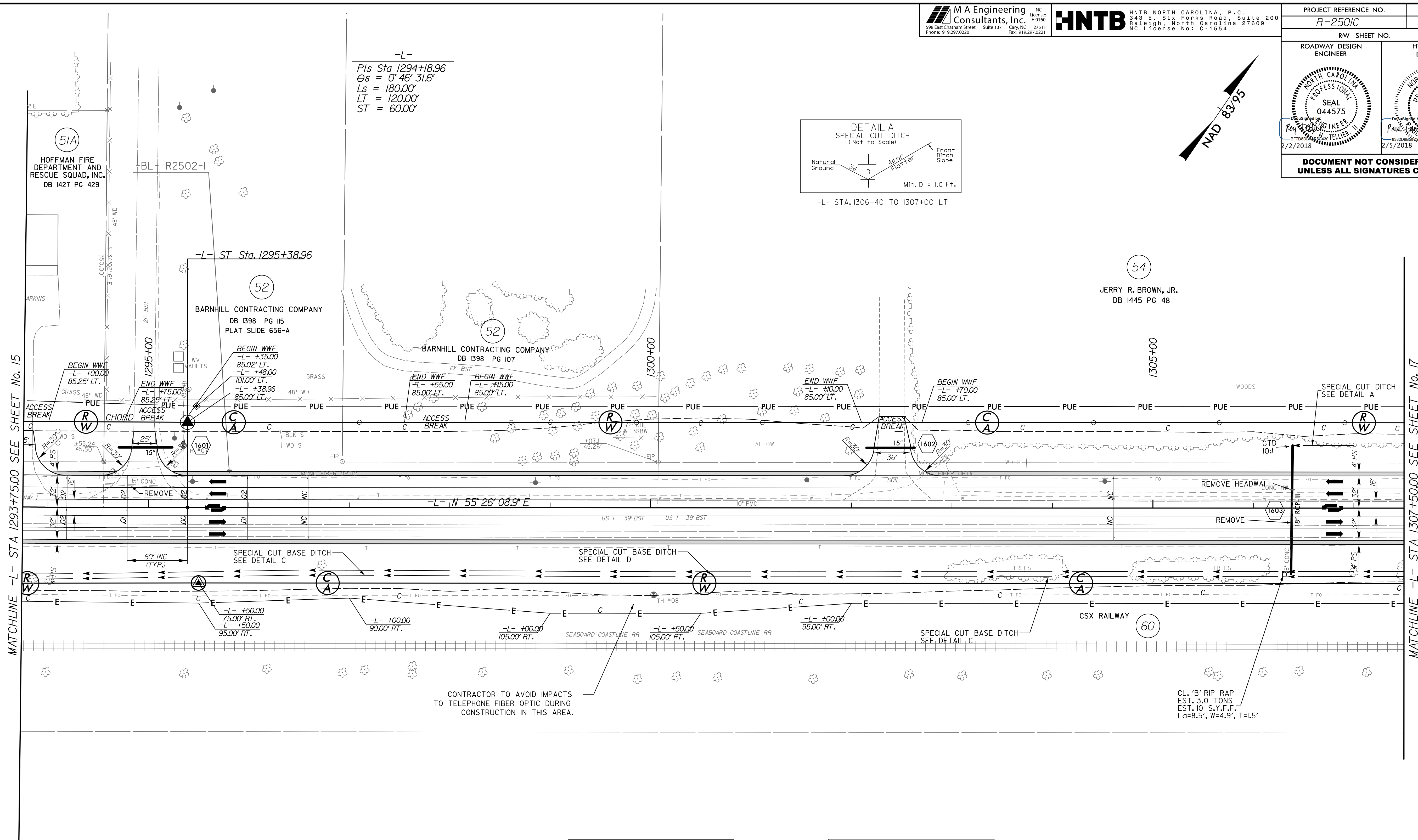
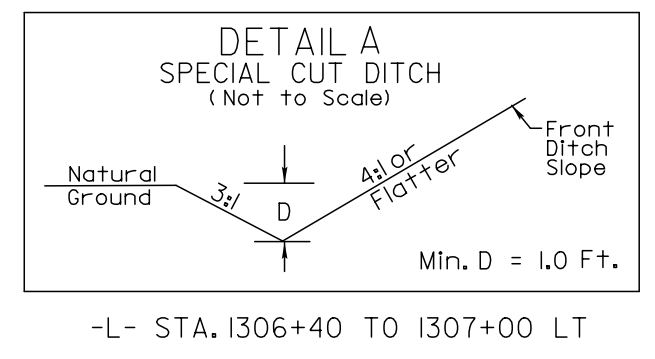
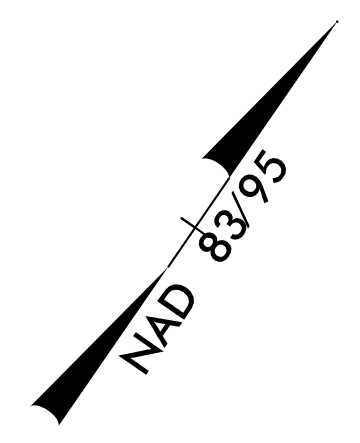


8/17/99

**MA Engineering Consultants, Inc.**  
598 East Chatham Street Cary, NC 27511  
Phone: 919.297.0220

**HNTB**  
HNTB NORTH CAROLINA, P.C.  
343 E. Six Forks Road, Suite 200  
Raleigh, North Carolina 27609  
NC License No: C-1524

PROJECT REFERENCE NO. <i>R-2501C</i>	SHEET NO. 16
RW SHEET NO.	
ROADWAY DESIGN ENGINEER	HYDRAULICS ENGINEER
<b>DOCUMENT NOT CONSIDERED FINAL UNLESS ALL SIGNATURES COMPLETED</b>	



-L-  
Pls Sta 1294+18.96  
 $\theta_s = 0^\circ 46' 31.6''$   
 $L_s = 180.00'$   
 $LT = 120.00'$   
 $ST = 60.00'$

(54)  
JERRY R. BROWN, JR.  
DB 1445 PG 48

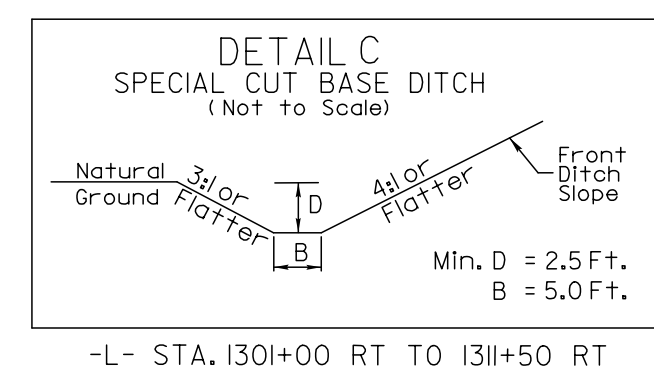
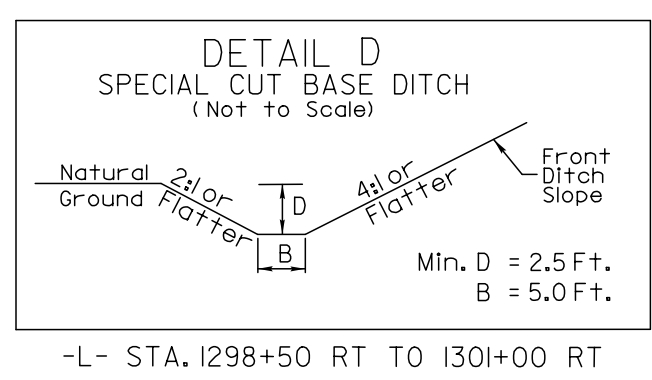
MATCHLINE -L- STA 1293+75.00 SEE SHEET No. 15

MATCHLINE -L- STA 1307+50.00 SEE SHEET No. 17

REVISIONS

N C WILDLIFE RESOURCES COMMISSION

N C WILDLIFE RESOURCES COMMISSION



CONTRACTOR TO AVOID IMPACTS TO TELEPHONE FIBER OPTIC DURING CONSTRUCTION IN THIS AREA.

CL. 'B' RIP RAP EST. 3.0 TONS EST. 10 S.Y.F.F. L<sub>o</sub>=8.5', W=4.9', T=1.5'

NOTE:  
ALL DRIVEWAY RADII ARE 10', UNLESS OTHERWISE NOTED.  
FOR -L- PROFILE SEE SHEET No. 25.

02-FEB-2018 17:44  
N:\Roadway\Projects\12501C.RDY\_PSH16.dgn  
HNTB