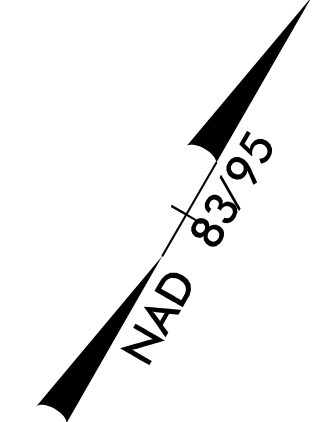


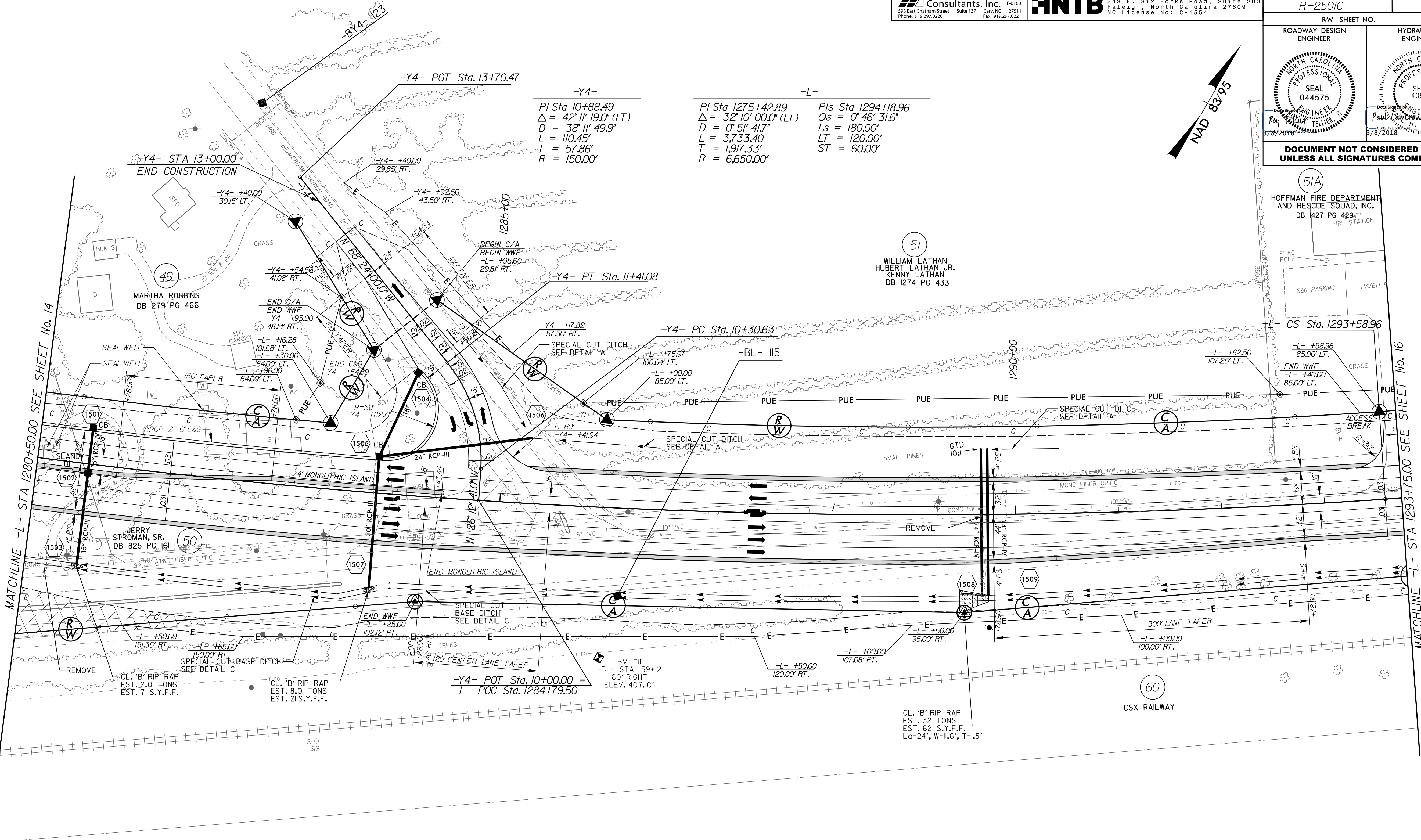
PROJECT REFERENCE NO. R-2501C		SHEET NO. 15
RW SHEET NO.		
ROADWAY DESIGN ENGINEER	HYDRAULICS ENGINEER	
DOCUMENT NOT CONSIDERED FINAL UNLESS ALL SIGNATURES COMPLETED		



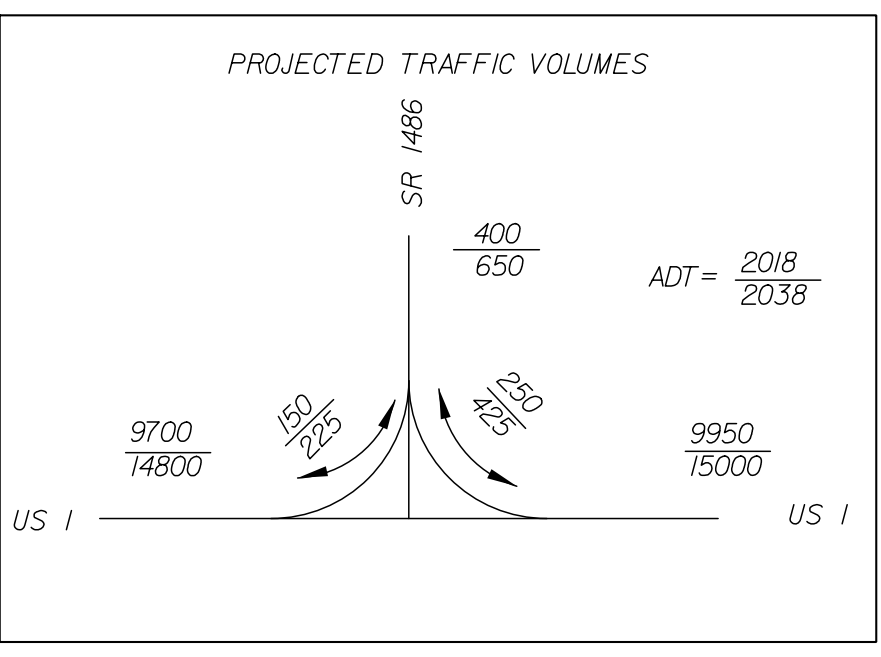
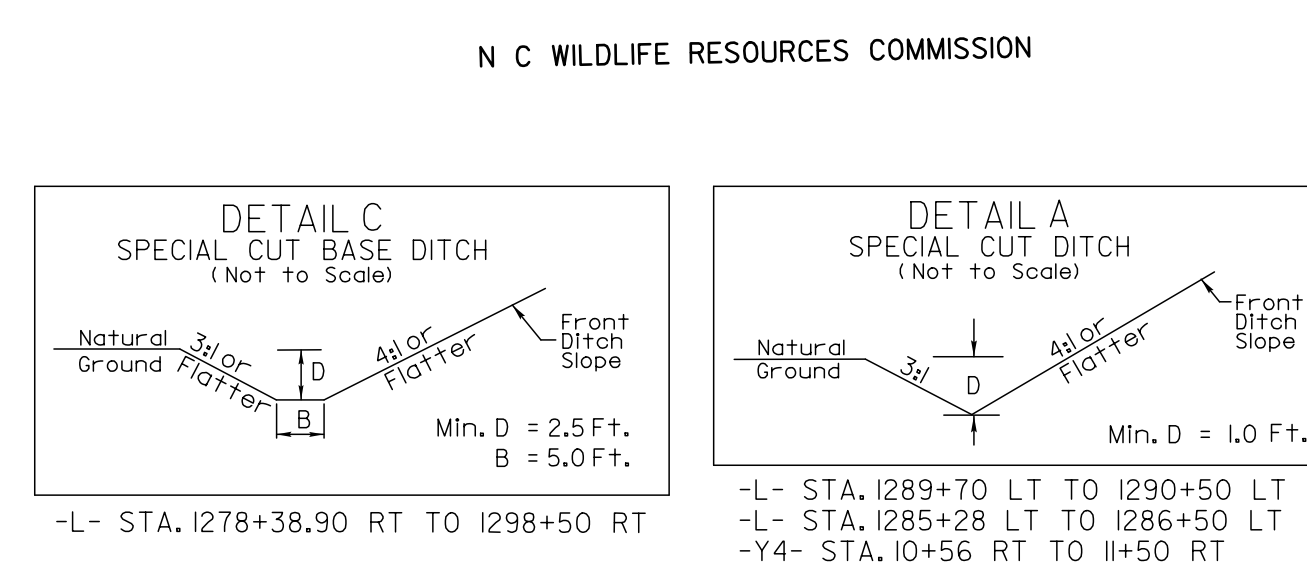
REVISIONS

MATCHLINE -L- STA 1280+50.00 SEE SHEET No. 14

MATCHLINE -L- STA 1293+75.00 SEE SHEET No. 16



-Y4-	-L-
PI Sta 10+88.49 $\Delta = 42^\circ 11' 19.0''$ (LT) $D = 38' 11'' 49.9''$ $L = 110.45'$ $T = 57.86'$ $R = 150.00'$	PI Sta 1275+42.89 $\Delta = 32^\circ 10' 00.0''$ (LT) $D = 0^\circ 51' 41.7''$ $L = 3.733.40'$ $T = 1.917.33'$ $R = 6,650.00'$
PI Sta 1294+18.96 $\Theta s = 0^\circ 46' 31.6''$ $Ls = 180.00'$ $LT = 120.00'$ $ST = 60.00'$	



N C WILDLIFE RESOURCES COMMISSION

NOTE:
FOR -L- PROFILE SEE SHEET No. 25.
FOR -Y4- PROFILE SEE SHEET No. 28.

08-MAR-2018 10:08:14
C:\p02\proj\2501C.RD\psh15.dgn
HNTB