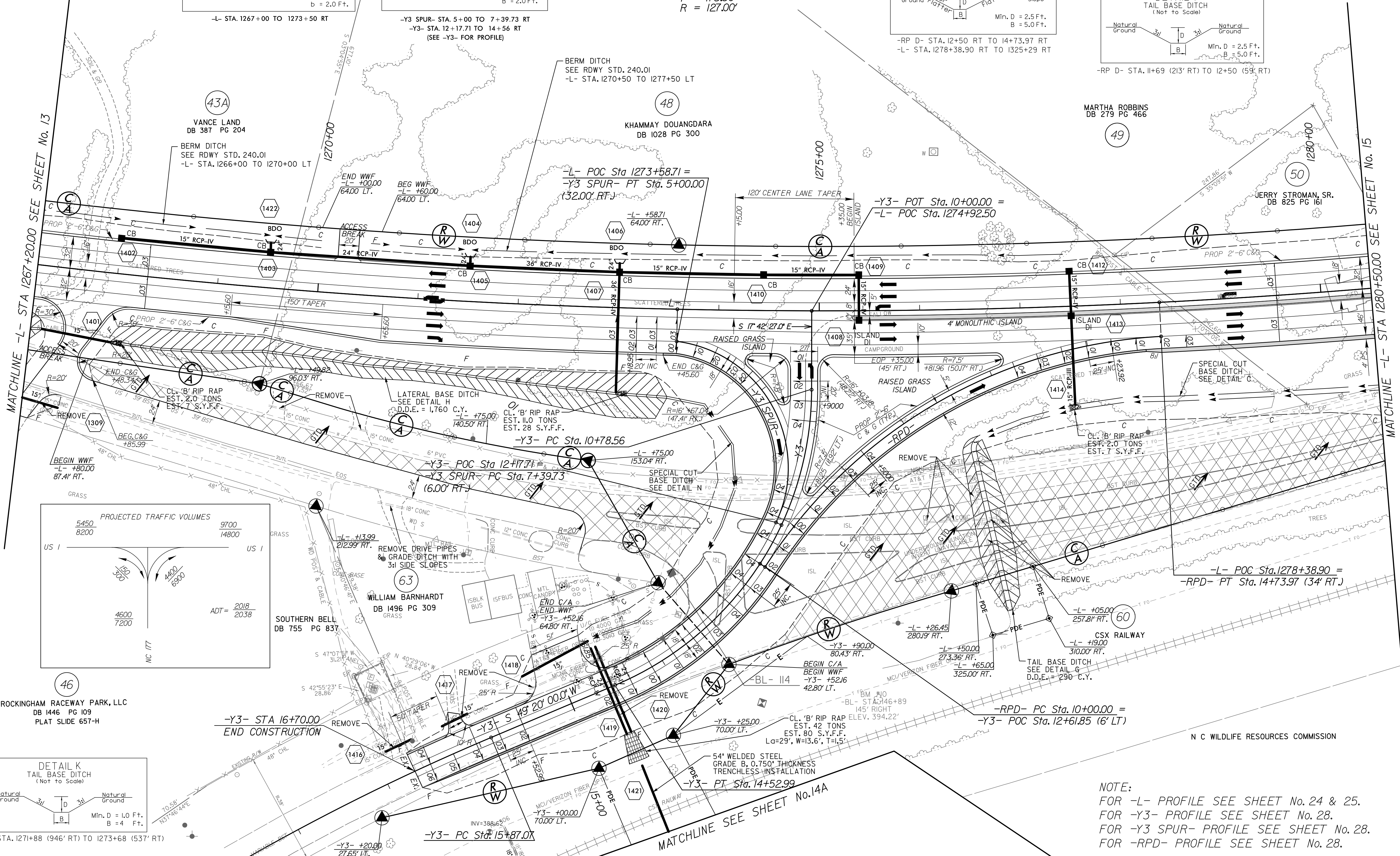
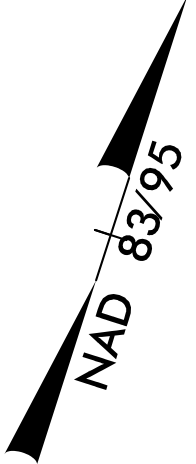
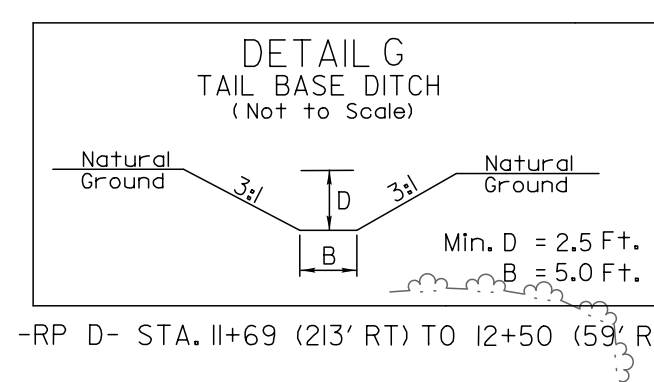
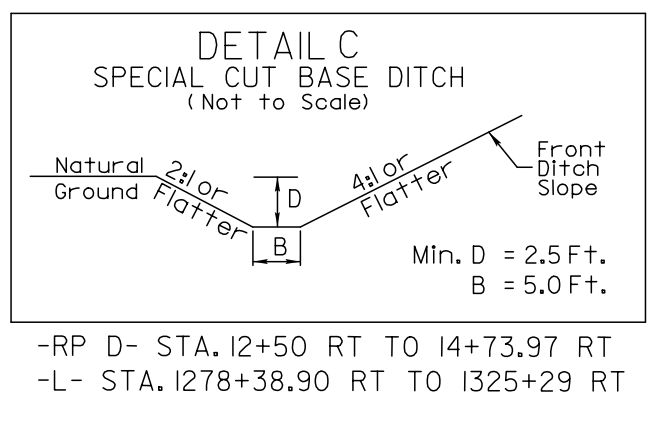
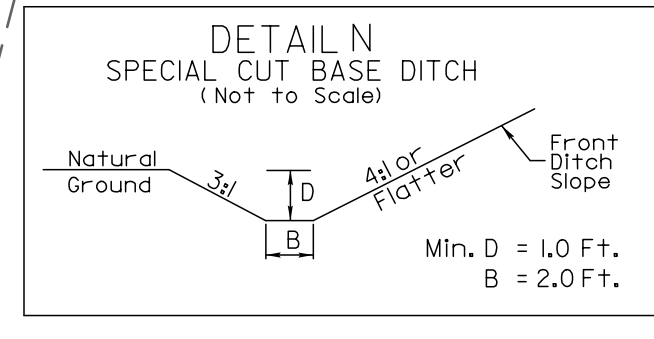
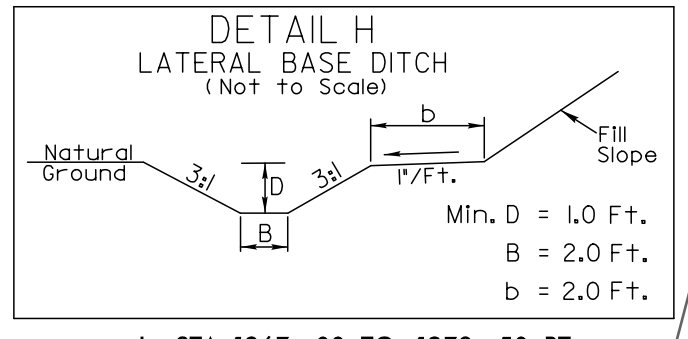


PROJECT REFERENCE NO. R-2501C	SHEET NO. 14
ROADWAY DESIGN ENGINEER	HYDRAULICS ENGINEER
SEAL 044575 Key: [Signature]	SEAL 40801 Paul: [Signature]
DOCUMENT NOT CONSIDERED FINAL UNLESS ALL SIGNATURES COMPLETED	

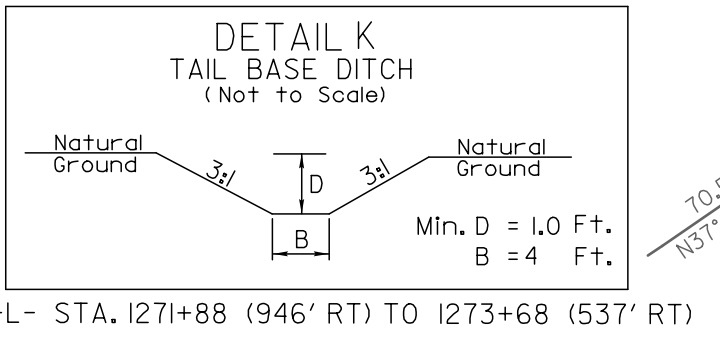
-L- PI Sta 1275+42.89 Δ = 32° 10' 00.0" (LT) D = 0' 51' 41.7" L = 3,733.40 T = 1,917.33' R = 6,650.00'	-Y3- PI Sta 12+90.53 Δ = 67° 02' 27.0" (RT) D = 17' 54' 17.8" L = 374.43' T = 211.97' R = 320.00'	-Y3- PI Sta 19+14.34 Δ = 16° 16' 00.0" (LT) D = 2' 30' 07.2" L = 650.15' T = 327.27' R = 2,290.00'	-RP D- PI Sta 12+56.49 Δ = 54° 18' 46.9" (RT) D = 11' 27' 33.0" L = 473.97' T = 256.49' R = 500.00'
--	---	--	---



PROJECTED TRAFFIC VOLUMES

5450 8200	9700 14800
4600 7200	ADT = 2018 2038

US 1



NOTE:  
FOR -L- PROFILE SEE SHEET No. 24 & 25.  
FOR -Y3- PROFILE SEE SHEET No. 28.  
FOR -Y3 SPUR- PROFILE SEE SHEET No. 28.  
FOR -RPD- PROFILE SEE SHEET No. 28.

REVISIONS

02-FEB-2018 17:44  
[Signature]  
[Signature]