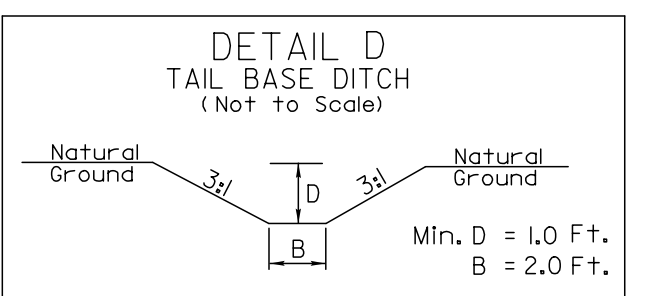


8/17/99

PROJECT REFERENCE NO. R-2501C	SHEET NO. 8
RW SHEET NO.	
ROADWAY DESIGN ENGINEER	HYDRAULICS ENGINEER
DOCUMENT NOT CONSIDERED FINAL UNLESS ALL SIGNATURES COMPLETED	

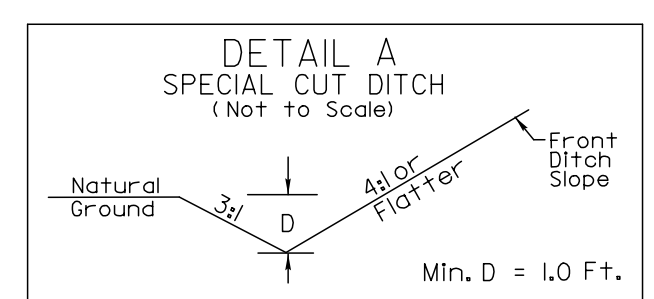
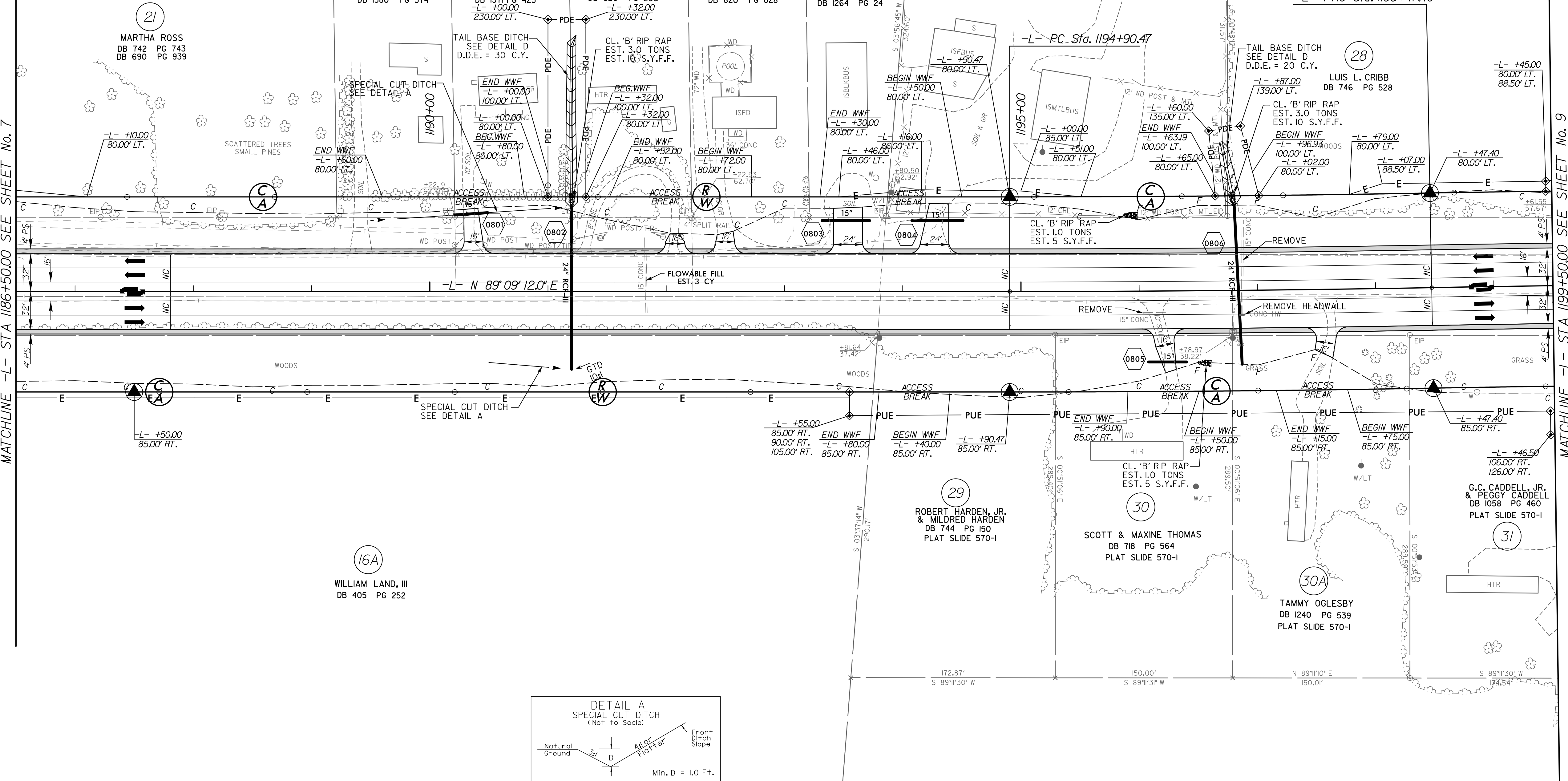
-L-
 PI Sta 1196+68.94 PI Sta 1200+25.87
 $\Delta = 1'03''00.0''$ (LT) $\Delta = 1'03''00.0''$ (RT)
 D = 0'17'39.0" D = 0'17'39.0"
 L = 356.93' L = 356.93'
 T = 178.47' T = 178.47'
 R = 19,476.88' R = 19,476.88'



-L- STA. 1191+20 (71.5' LT) TO 1191+24 (216.7' LT)
 -L- STA. 1196+81 (71.57' LT) TO 1196+70 (126' LT)

MATCHLINE -L- STA 1186+50.00 SEE SHEET No. 7

MATCHLINE -L- STA 1199+50.00 SEE SHEET No. 9



-L- STA. 1189+50 TO 1191+20 LT
 -L- STA. 1190+50 TO 1191+20 RT

REVISIONS

02-FEB-2018 17:44
N:\Roadway\Projects\12501C.RDY_PSH08.dgn
HNTB

NOTE:
 ALL DRIVEWAY RADII ARE 10', UNLESS OTHERWISE NOTED.
 FOR -L- PROFILE SEE SHEET No. 21 & 22.