

8/17/99

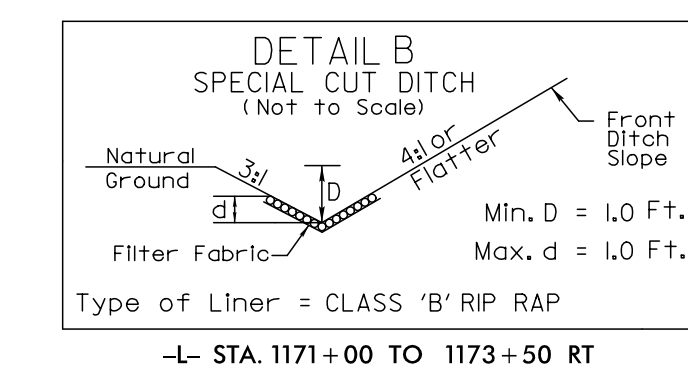
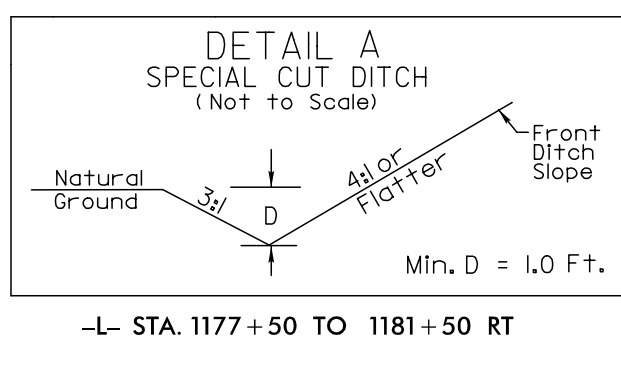
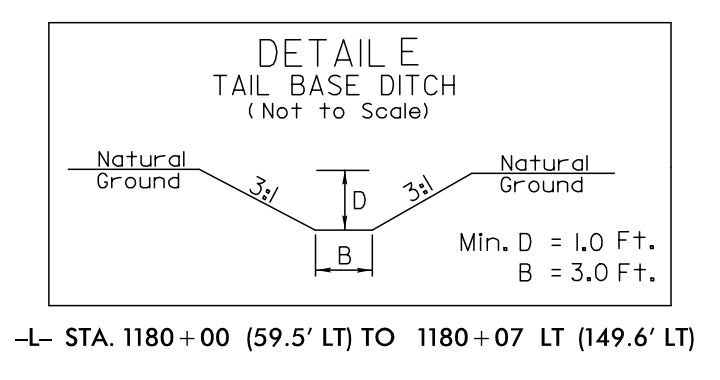
MA Engineering Consultants, Inc. 598 East Chatham Street Suite 137 Cary, NC 27511 Phone: 919.297.0220

HNTB HNTB NORTH CAROLINA, P.C. 343 E. Six Forks Road, Suite 200 Raleigh, North Carolina 27609 NC License No: C-1524

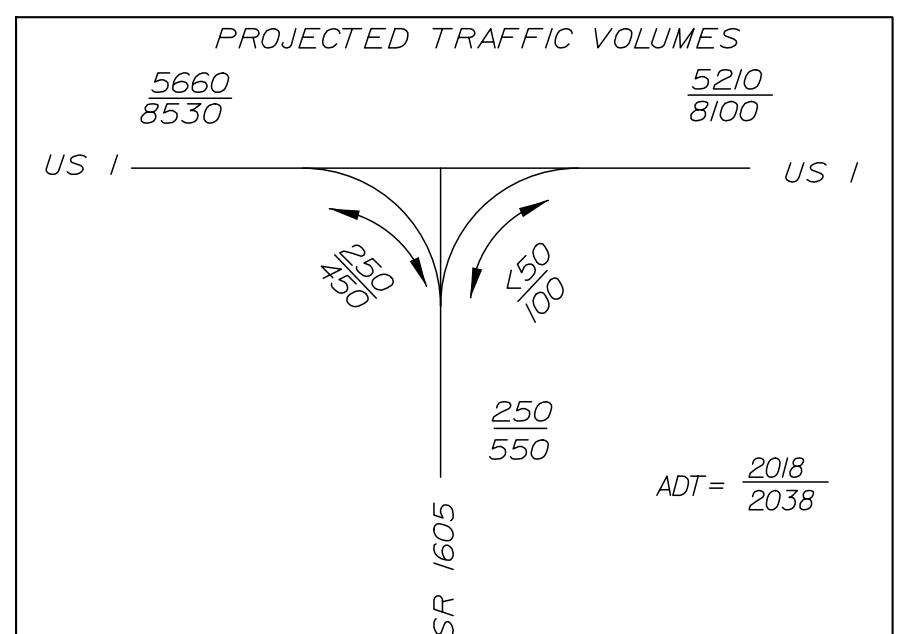
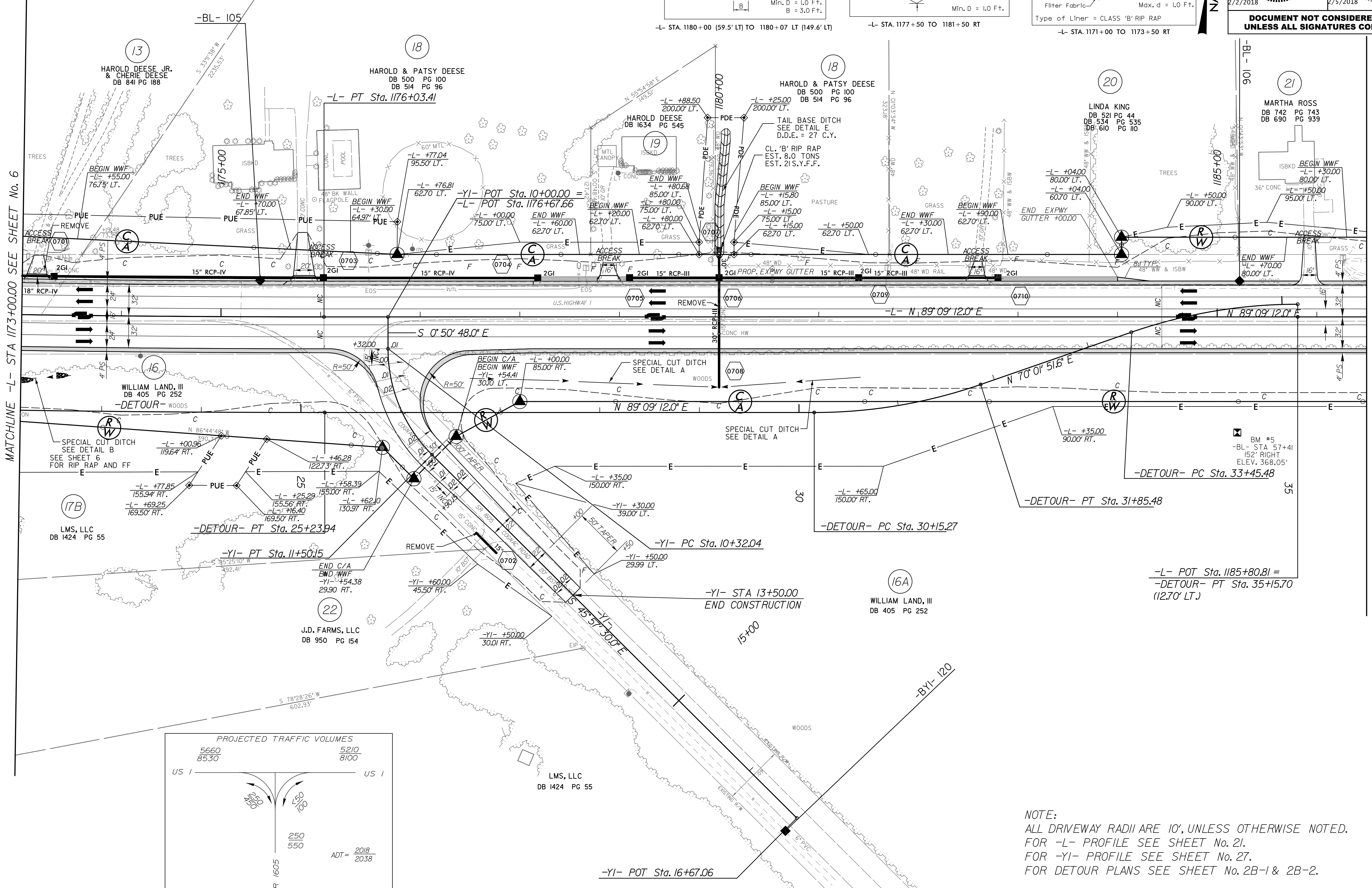
PROJECT REFERENCE NO. R-2501C	SHEET NO. 7
RW SHEET NO.	
ROADWAY DESIGN ENGINEER	HYDRAULICS ENGINEER
DOCUMENT NOT CONSIDERED FINAL UNLESS ALL SIGNATURES COMPLETED	

-L-
 PI Sta 1171+94.66
 $\Delta = 2^{\circ}18'27.0''$ (LT)
 $D = 0^{\circ}16'56.0''$
 $L = 817.61'$
 $T = 408.86'$
 $R = 20,301.43'$

-YI-
 PI Sta 10+94.35
 $\Delta = 45^{\circ}06'42.0''$ (LT)
 $D = 38^{\circ}11'49.9''$
 $L = 118.10'$
 $T = 62.30'$
 $R = 150.00'$
 $e = .020$



NAD 83/95



NOTE:
 ALL DRIVEWAY RADII ARE 10', UNLESS OTHERWISE NOTED.
 FOR -L- PROFILE SEE SHEET No. 21.
 FOR -YI- PROFILE SEE SHEET No. 27.
 FOR DETOUR PLANS SEE SHEET No. 2B-1 & 2B-2.

REVISIONS

02-FEB-2018, 17:14, N:\Roadway\Projects\172501C.RDY_PSH07.dgn