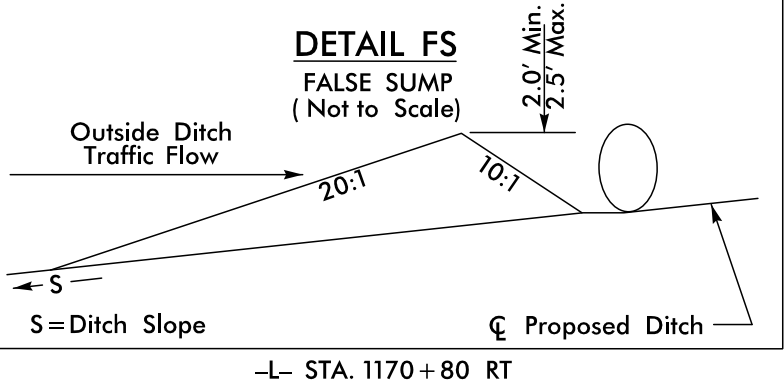
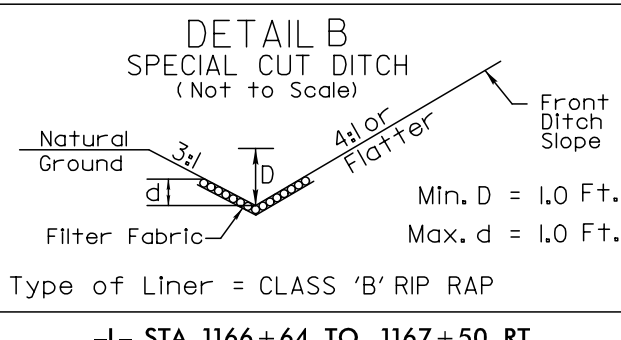
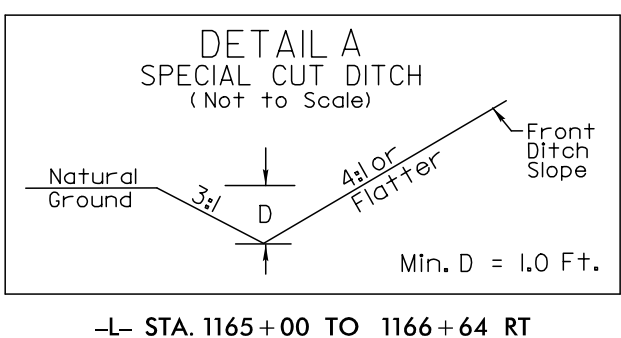
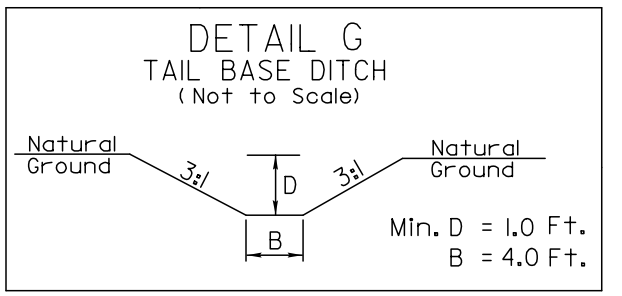
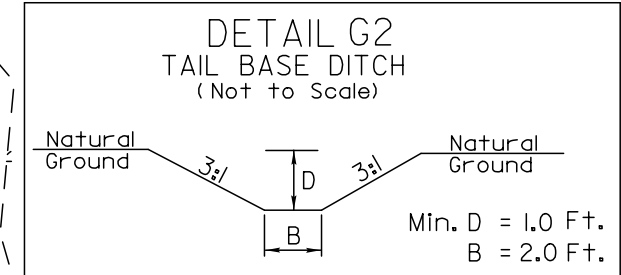
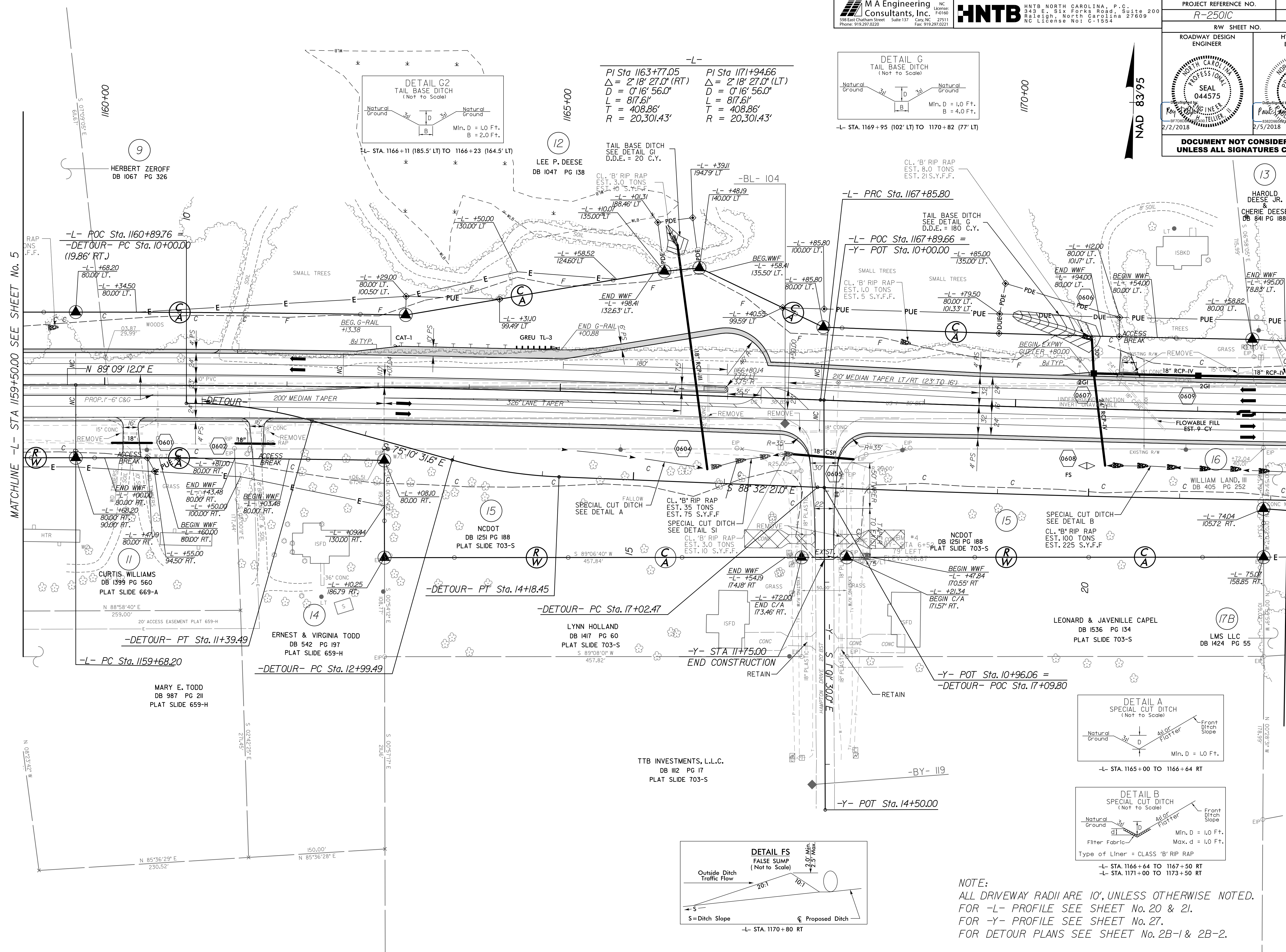


PROJECT REFERENCE NO. R-2501C	SHEET NO. 6
RW SHEET NO.	
ROADWAY DESIGN ENGINEER	HYDRAULICS ENGINEER
DOCUMENT NOT CONSIDERED FINAL UNLESS ALL SIGNATURES COMPLETED	

MATCHLINE -L- STA 1159+50.00 SEE SHEET No. 5

MATCHLINE -L- STA 1173+00.00 SEE SHEET No. 7



PI Sta 1163+77.05  $\Delta = 2' 18' 27.0''$  (RT)  
 $D = 0' 16' 56.0''$   
 $L = 817.61'$   
 $T = 408.86'$   
 $R = 20,301.43'$

PI Sta 1171+94.66  $\Delta = 2' 18' 27.0''$  (LT)  
 $D = 0' 16' 56.0''$   
 $L = 817.61'$   
 $T = 408.86'$   
 $R = 20,301.43'$

NOTE:  
 ALL DRIVEWAY RADII ARE 10', UNLESS OTHERWISE NOTED.  
 FOR -L- PROFILE SEE SHEET No. 20 & 21.  
 FOR -Y- PROFILE SEE SHEET No. 27.  
 FOR DETOUR PLANS SEE SHEET No. 2B-1 & 2B-2.

REVISIONS

8/17/99

02-FEB-2018 17:14:14  
 N:\Roadway\Projects\2501C.RD\PSH06.dgn  
 HNTB