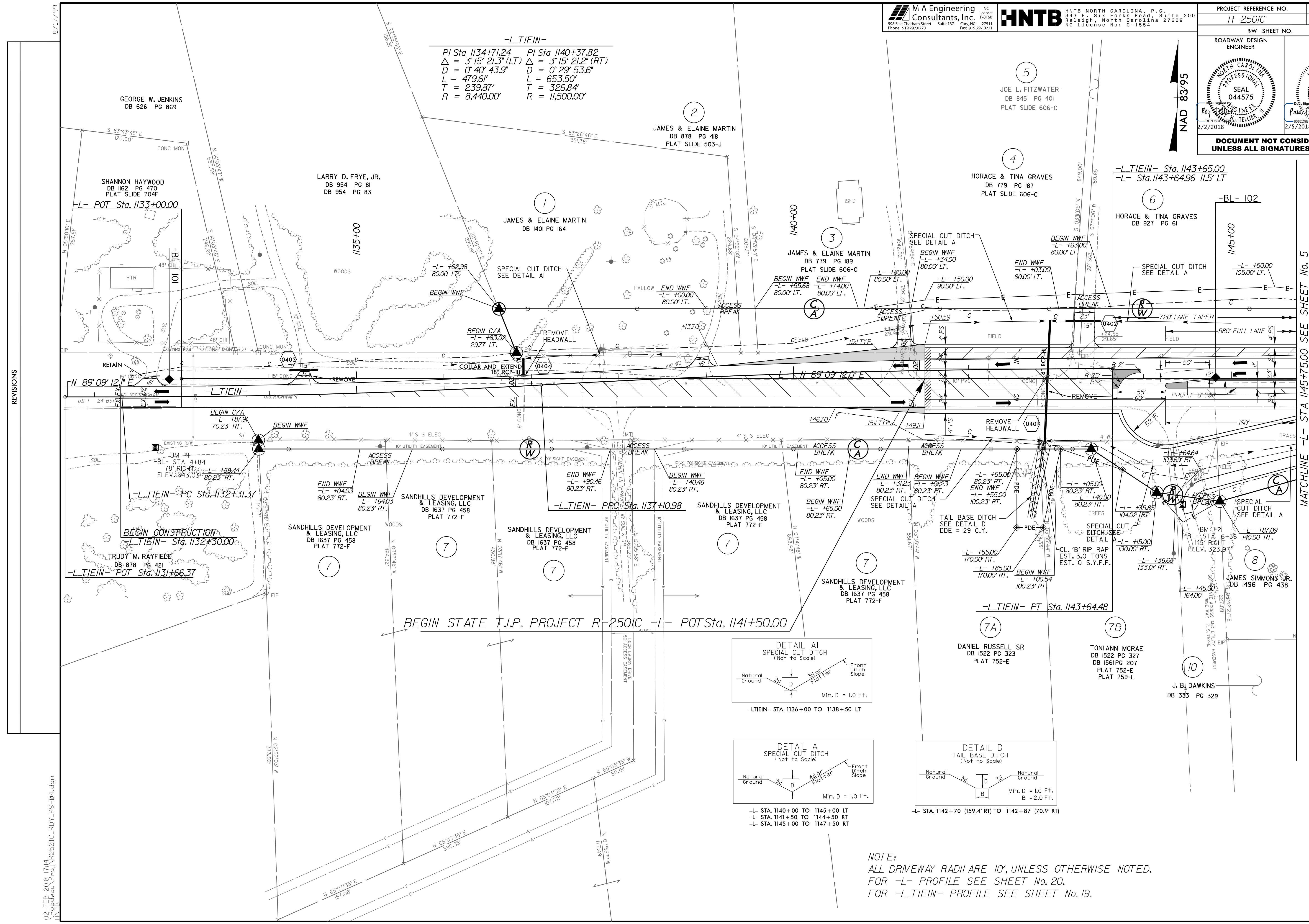


PROJECT REFERENCE NO. R-250IC	SHEET NO. 4
RW SHEET NO.	
ROADWAY DESIGN ENGINEER	HYDRAULICS ENGINEER
DOCUMENT NOT CONSIDERED FINAL UNLESS ALL SIGNATURES COMPLETED	

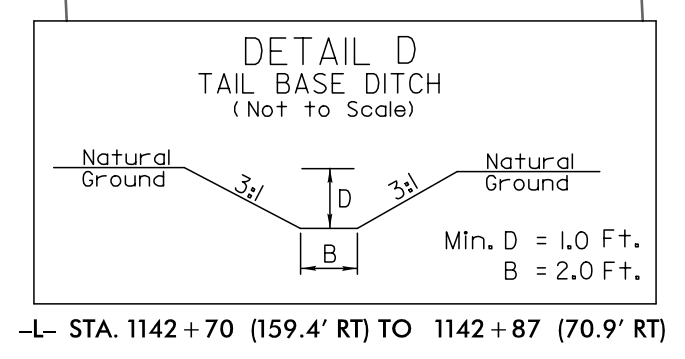
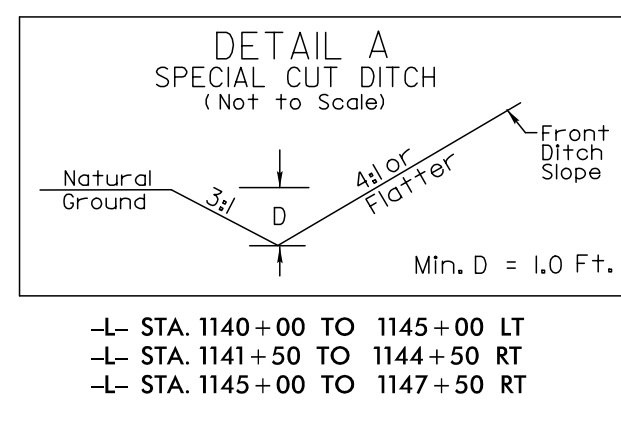
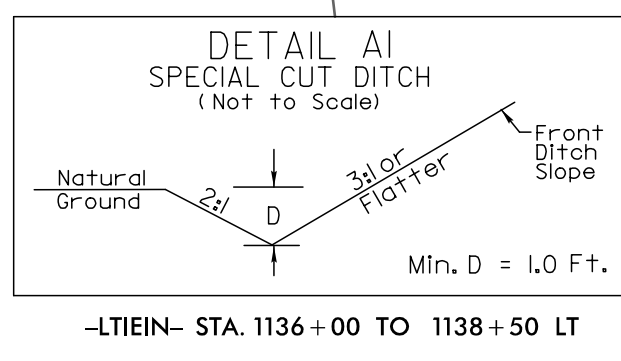
-LTIEIN-

PI Sta 1134+71.24	PI Sta 1140+37.82
$\Delta = 3^{\circ} 15' 21.3''$ (LT)	$\Delta = 3^{\circ} 15' 21.2''$ (RT)
$D = 0^{\circ} 40' 43.9''$	$D = 0^{\circ} 29' 53.6''$
$L = 479.61'$	$L = 653.50'$
$T = 239.87'$	$T = 326.84'$
$R = 8,440.00'$	$R = 11,500.00'$



REVISIONS

MATCHLINE -L- STA 1145+75.00 SEE SHEET No. 5



NOTE:
ALL DRIVEWAY RADII ARE 10', UNLESS OTHERWISE NOTED.
FOR -L- PROFILE SEE SHEET No. 20.
FOR -LTIEIN- PROFILE SEE SHEET No. 19.

02-FEB-2018 17:44
N:\Roadway\Projects\2501C_RDY_PSH04.dgn
JBL