

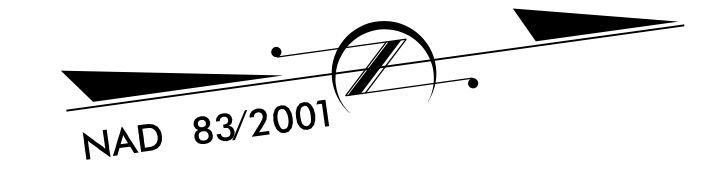
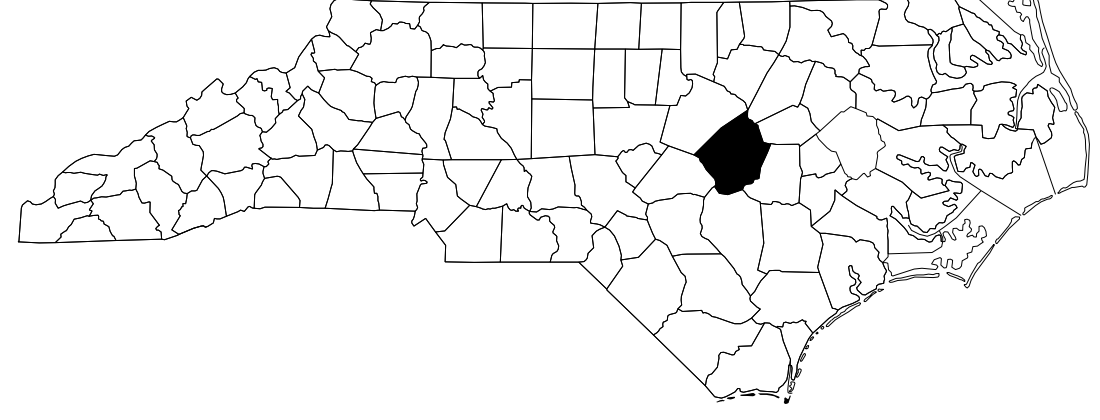
**This electronic collection of documents is provided  
for the convenience of the user  
and is Not a Certified Document –**

**The documents contained herein were originally issued  
and sealed by the individuals whose names and license  
numbers appear on each page, on the dates appearing  
with their signature on that page.**

**This file or an individual page  
shall not be considered a certified document.**

T.I.P. NO.	SHEET NO.
<b>U-5795</b>	<b>UO-1</b>

NOTE:  
 ALL UTILITY WORK SHOWN ON THIS SHEET IS DONE BY OTHERS.  
 NO PAYMENT WILL BE MADE TO THE CONTRACTOR FOR UTILITY WORK SHOWN ON THIS SHEET.

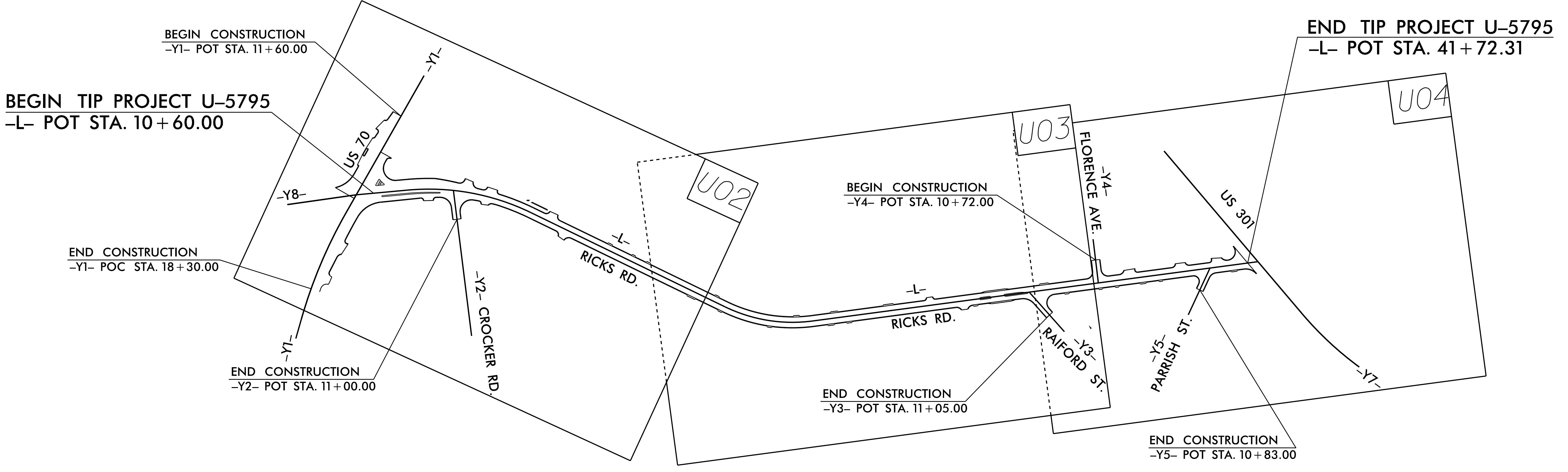
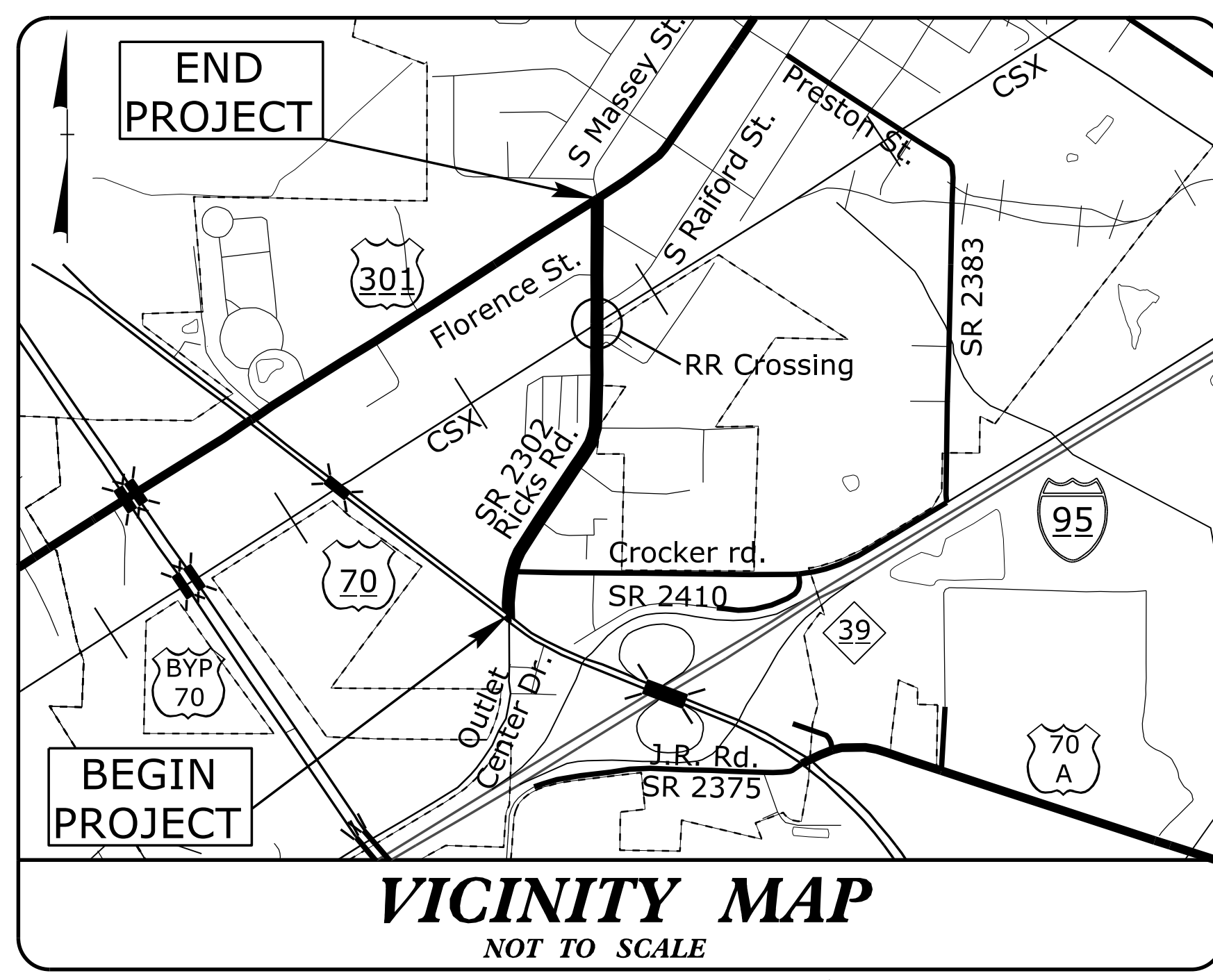


STATE OF NORTH CAROLINA  
 DIVISION OF HIGHWAYS

**UTILITIES BY OTHERS PLANS**  
**JOHNSTON COUNTY**

LOCATION: SR 2302 (RICKS ROAD) FROM US 70 TO US 301 IN SELMA

TYPE OF WORK: UTILITIES BY OTHERS

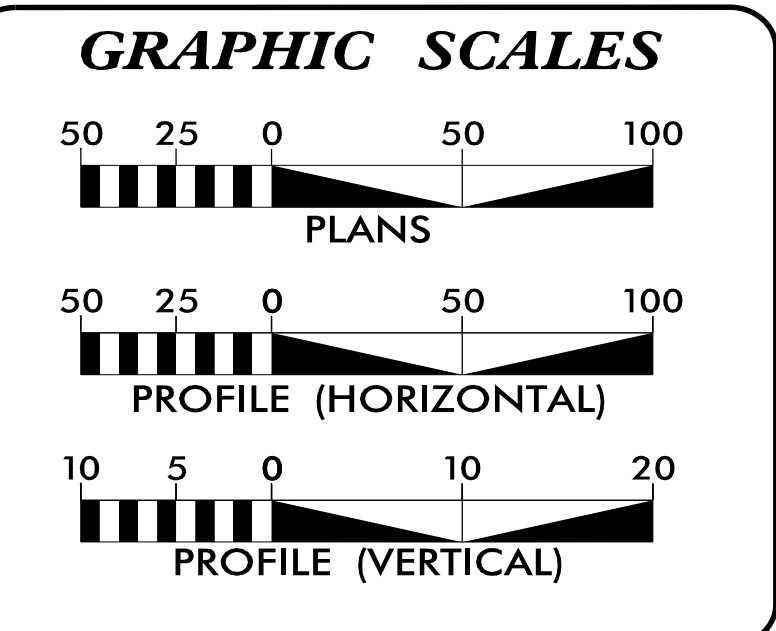


THIS PROJECT IS WITHIN THE CITY LIMITS OF SELMA.

PRELIMINARY PLANS  
 DO NOT USE FOR CONSTRUCTION

**TIP PROJECT: U-5795**

**CONTRACT:**



**INDEX OF SHEETS**

SHEET NO.:	DESCRIPTION:
UO-1	TITLE SHEET
UO-2 THRU UO-4	UBO PLAN SHEETS

**UTILITY OWNERS WITH CONFLICTS**

(A) POWER- DUKE ENERGY: MARK BLACKMAN 919-654-6588
(B) POWER- TOWN OF SELMA: DAVID TATUM 919-256-5915
(C) PHONE- AT&T: BILLY GRINER 919-612-9856
(D) CABLE- CHARTER: CLAY ROLLINS 252-265-4170
(E) WATER & SEWER- TOWN OF SELMA: ALEX FULLER 919-631-5898
(F) WATER & SEWER- JOHNSTON CO.: MIKE KEEN 919-989-5075
(G) GAS- PIEDMONT NG: LARRY PRIEST 919-920-5990

PREPARED IN THE OFFICE OF:

3220 GLEN ROYAL RD. RALEIGH, NC 27617  
 TELE 919.788.0224 FAX 919.788.0232  
 NC LICENSE #P-0189

BRIAN WILES, PE	UTILITY PROJECT MANAGER
ERIC TWEED, PE	PROJECT UTILITY COORDINATOR
MARY JO LEE, PE	PROJECT UTILITY DIRECTOR

DIVISION OF HIGHWAYS  
 DIVISION 4  
 509 WARD BLVD  
 WILSON, NC 27895

DAVID BEAMAN	DIV. UTILITY COORDINATOR
MATT CLARKE, PE	DIVISION PROJECT MANAGER
	DIV. PROJ. DEVELOPMENT ENGR.
WENDI JOHNSON, PE	DIV. CONSTRUCTION ENGINEER

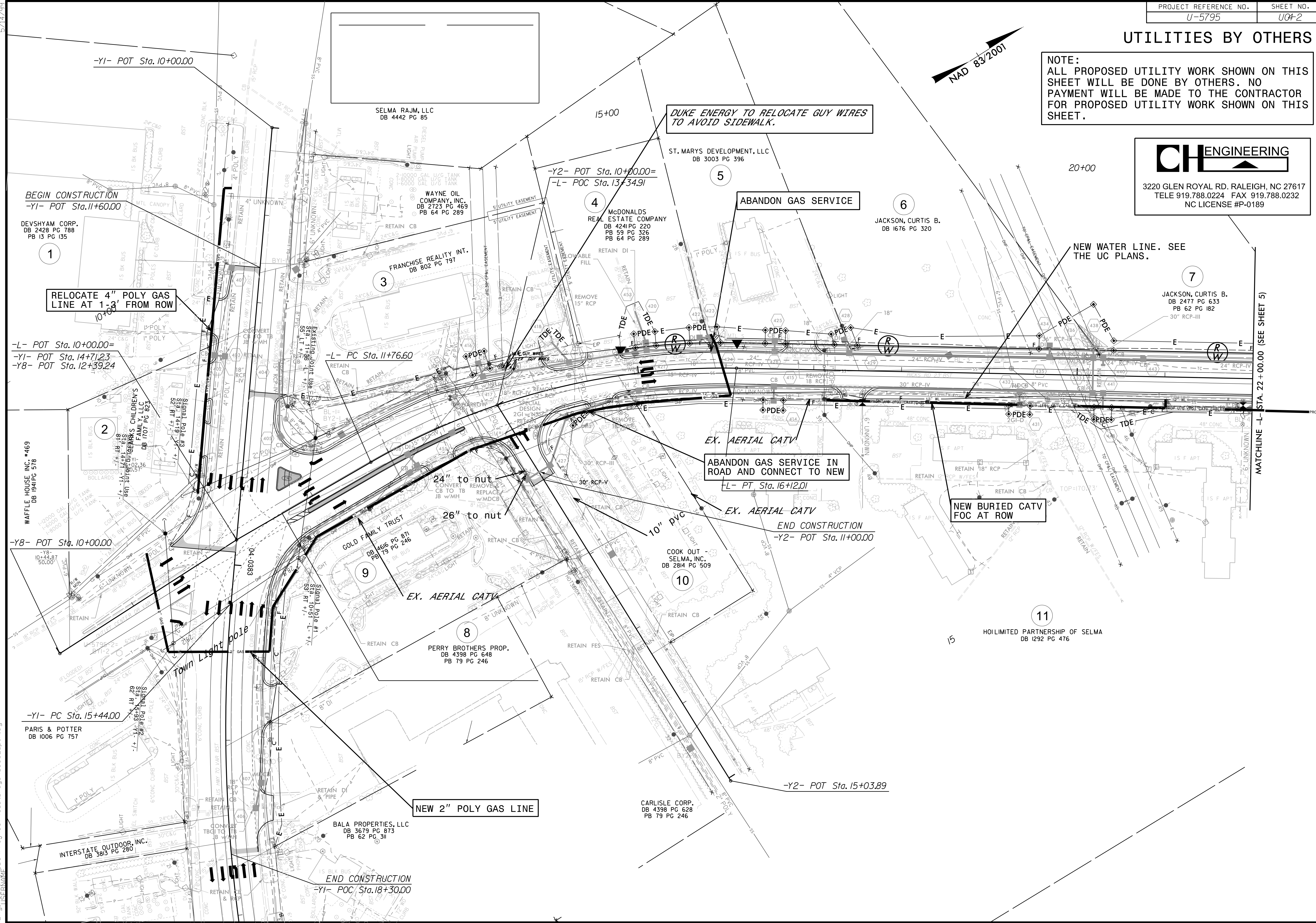
9/8/2017 P:\Utilities\Engineering\UBO\Proj\U5795\_ut\_tsh\_u001\_psh.dgn USERNAME\_



UTILITIES BY OTHERS

NOTE:  
ALL PROPOSED UTILITY WORK SHOWN ON THIS SHEET WILL BE DONE BY OTHERS. NO PAYMENT WILL BE MADE TO THE CONTRACTOR FOR PROPOSED UTILITY WORK SHOWN ON THIS SHEET.

**CH ENGINEERING**  
 3220 GLEN ROYAL RD. RALEIGH, NC 27617  
 TELE 919.788.0224 FAX 919.788.0232  
 NC LICENSE #P-0189



-Y1- POT Sta. 10+00.00

DUKE ENERGY TO RELOCATE GUY WIRES TO AVOID SIDEWALK.

BEGIN CONSTRUCTION  
-Y1- POT Sta. 11+60.00

ST. MARYS DEVELOPMENT, LLC  
DB 3003 PG 396

ABANDON GAS SERVICE

RELOCATE 4" POLY GAS LINE AT 1'-3" FROM ROW

SELMA RAJM, LLC  
DB 4442 PG 85

-Y2- POT Sta. 10+00.00=  
-L- POC Sta. 13+34.91

NEW WATER LINE. SEE THE UC PLANS.

-L- POT Sta. 10+00.00=  
-Y1- POT Sta. 14+71.23  
-Y8- POT Sta. 12+39.24

FRANCHISE REALTY INT.  
DB 802 PG 797

-L- PC Sta. 11+76.60

JACKSON, CURTIS B.  
DB 2477 PG 633  
PB 62 PG 182  
30" RCP-III

WAFFLE HOUSE INC. #469  
DB 1941 PG 578

-Y8- POT Sta. 10+00.00

GOLD FAMILY TRUST  
DB AS16 PG 871  
PB 19 PG 246

ABANDON GAS SERVICE IN ROAD AND CONNECT TO NEW  
-L- PT. Sta. 16+12.01

NEW BURIED CATV FOC AT ROW

-Y1- PC Sta. 15+44.00

PARIS & POTTER  
DB 1006 PG 757

PERRY BROTHERS PROP.  
DB 4398 PG 648  
PB 79 PG 246

END CONSTRUCTION  
-Y2- POT Sta. 11+00.00

HOLLIMITED PARTNERSHIP OF SELMA  
DB 1292 PG 476

INTERSTATE OUTDOOR, INC.  
DB 3813 PG 280

NEW 2" POLY GAS LINE

CARLISLE CORP.  
DB 4398 PG 628  
PB 79 PG 246

-Y2- POT Sta. 15+03.89

END CONSTRUCTION  
-Y1- POC/ Sta. 18+30.00

BALA PROPERTIES, LLC  
DB 3679 PG 873  
PB 62 PG 311

MATCHLINE -L- STA. 22+00.00 (SEE SHEET 5)

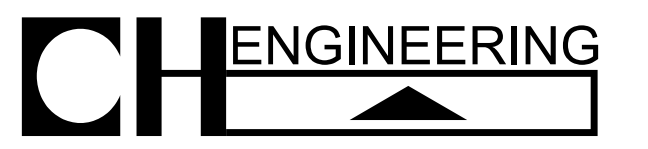
9/8/2017 10:00 PM Proj: U5795\_04\_U002.psh.dgn



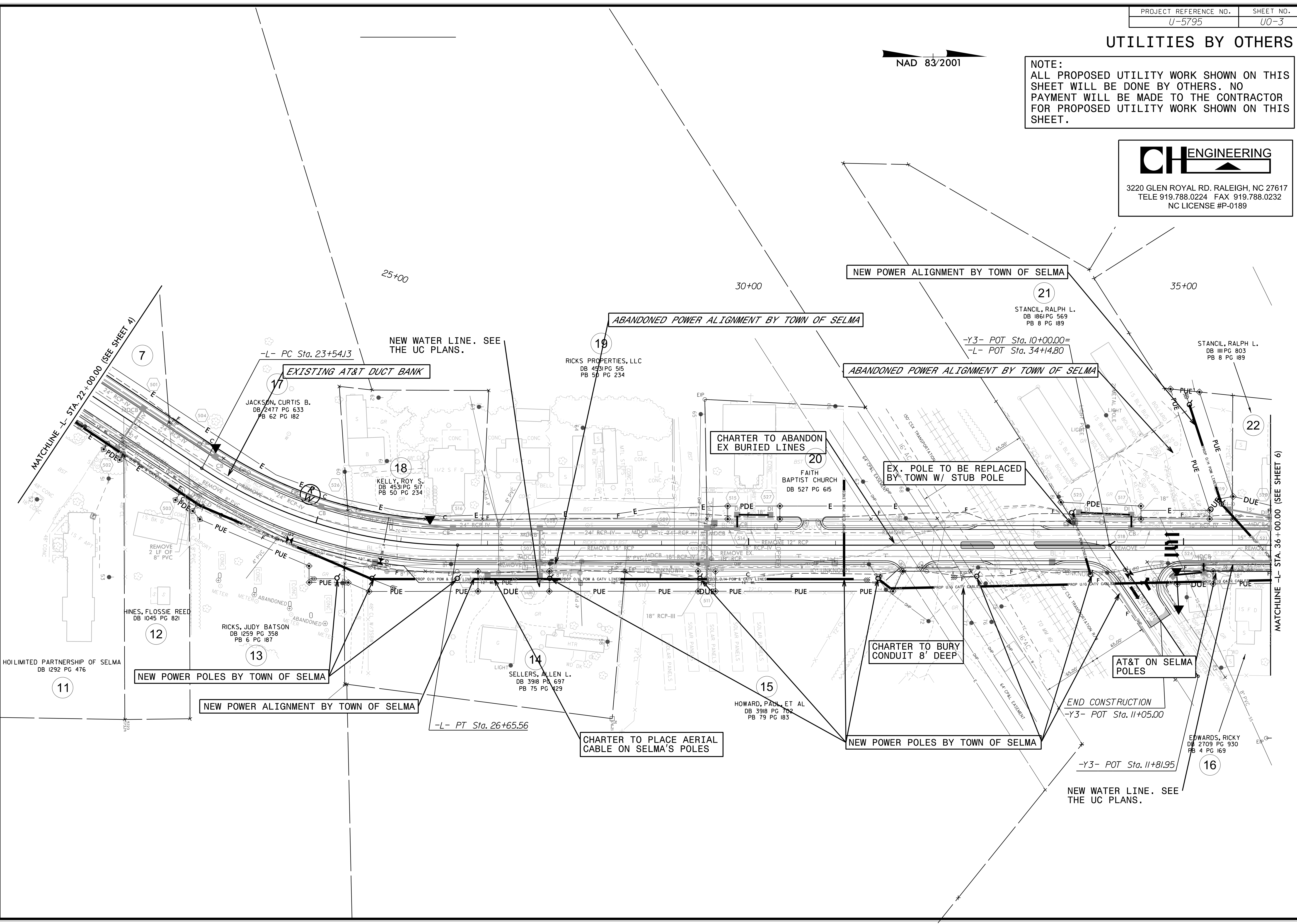
### UTILITIES BY OTHERS

NAD 83/2001

NOTE:  
ALL PROPOSED UTILITY WORK SHOWN ON THIS SHEET WILL BE DONE BY OTHERS. NO PAYMENT WILL BE MADE TO THE CONTRACTOR FOR PROPOSED UTILITY WORK SHOWN ON THIS SHEET.



3220 GLEN ROYAL RD. RALEIGH, NC 27617  
TELE 919.788.0224 FAX 919.788.0232  
NC LICENSE #P-0189



5/14/99  
 9/8/2017 10:00:00 AM Pr-oj\U5795-ut-r.dwg\05\_U003\_psh.dgn  
 CH ENGINEERING

### UTILITIES BY OTHERS

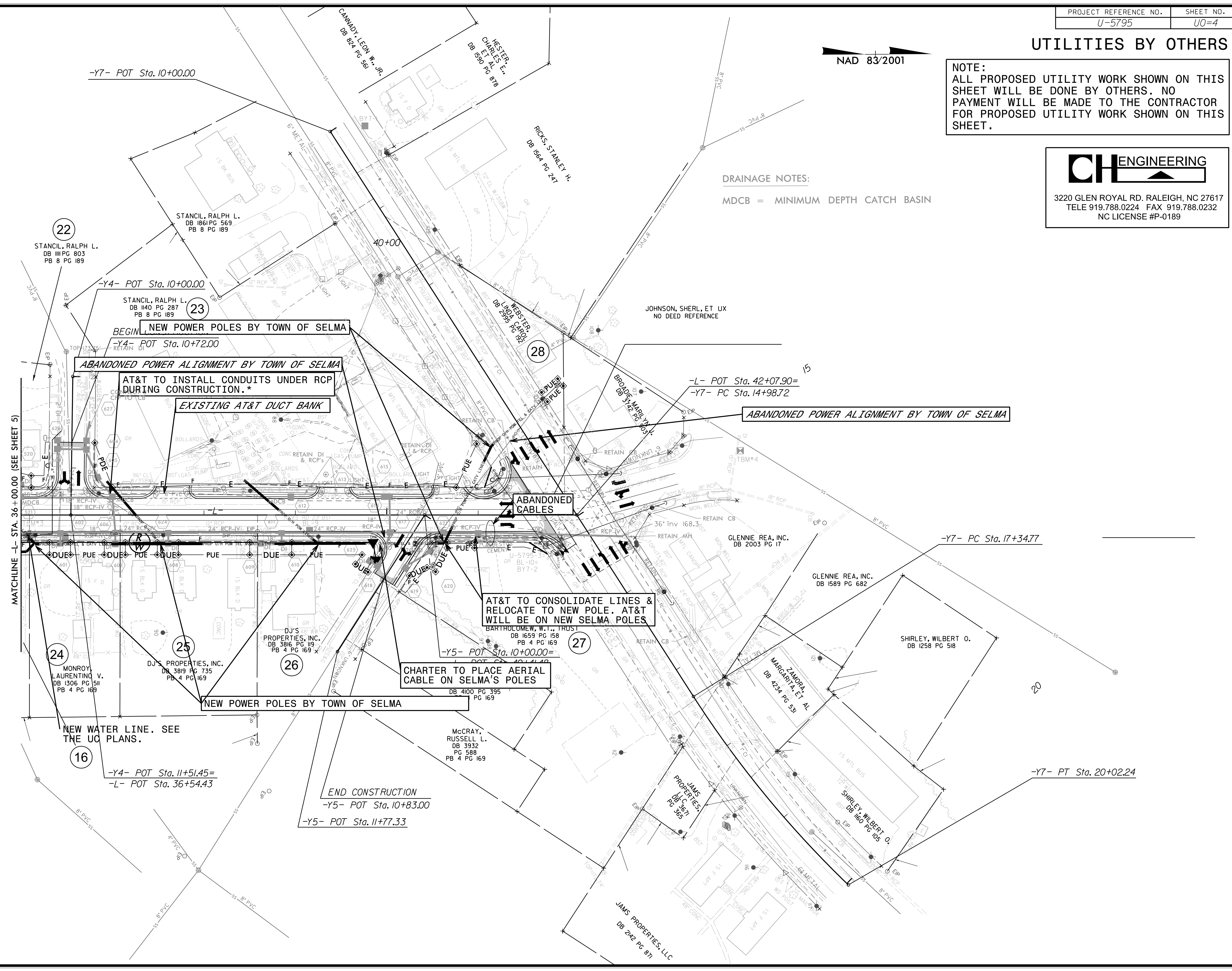
NAD 83/2001

**NOTE:**  
ALL PROPOSED UTILITY WORK SHOWN ON THIS SHEET WILL BE DONE BY OTHERS. NO PAYMENT WILL BE MADE TO THE CONTRACTOR FOR PROPOSED UTILITY WORK SHOWN ON THIS SHEET.

**CH ENGINEERING**

3220 GLEN ROYAL RD. RALEIGH, NC 27617  
 TELE 919.788.0224 FAX 919.788.0232  
 NC LICENSE #P-0189

**DRAINAGE NOTES:**  
MDCB = MINIMUM DEPTH CATCH BASIN



MATCHLINE -L- STA. 36+00.00 (SEE SHEET 5)

9/8/2017 10:00 PM Proj: U5795\_rtd\06\_U004\_psh.dgn