

5/14/99

* UTILITIES SHOWN ON PLANS ARE APPROXIMATE. CONTRACTOR SHALL FIELD VERIFY LOCATION AND DEPTH.

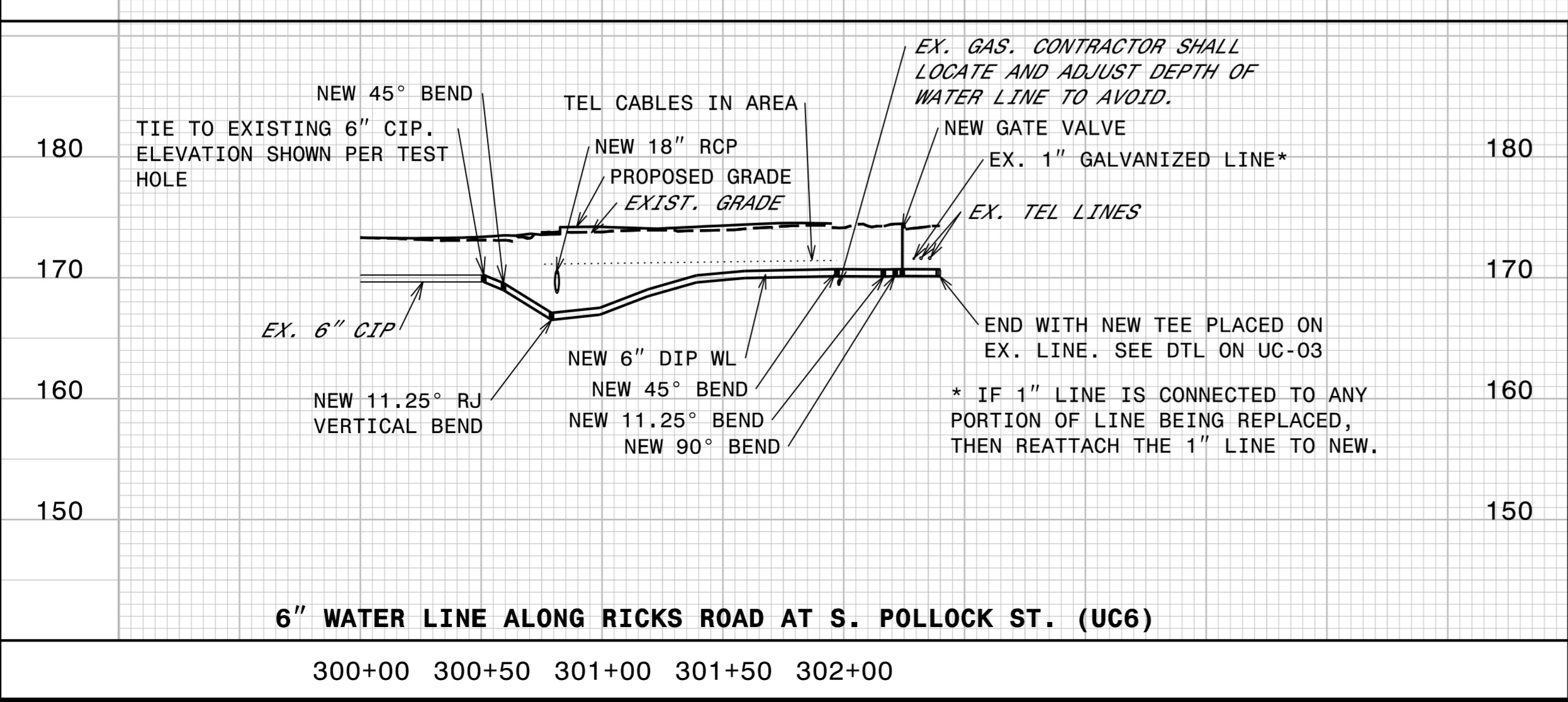
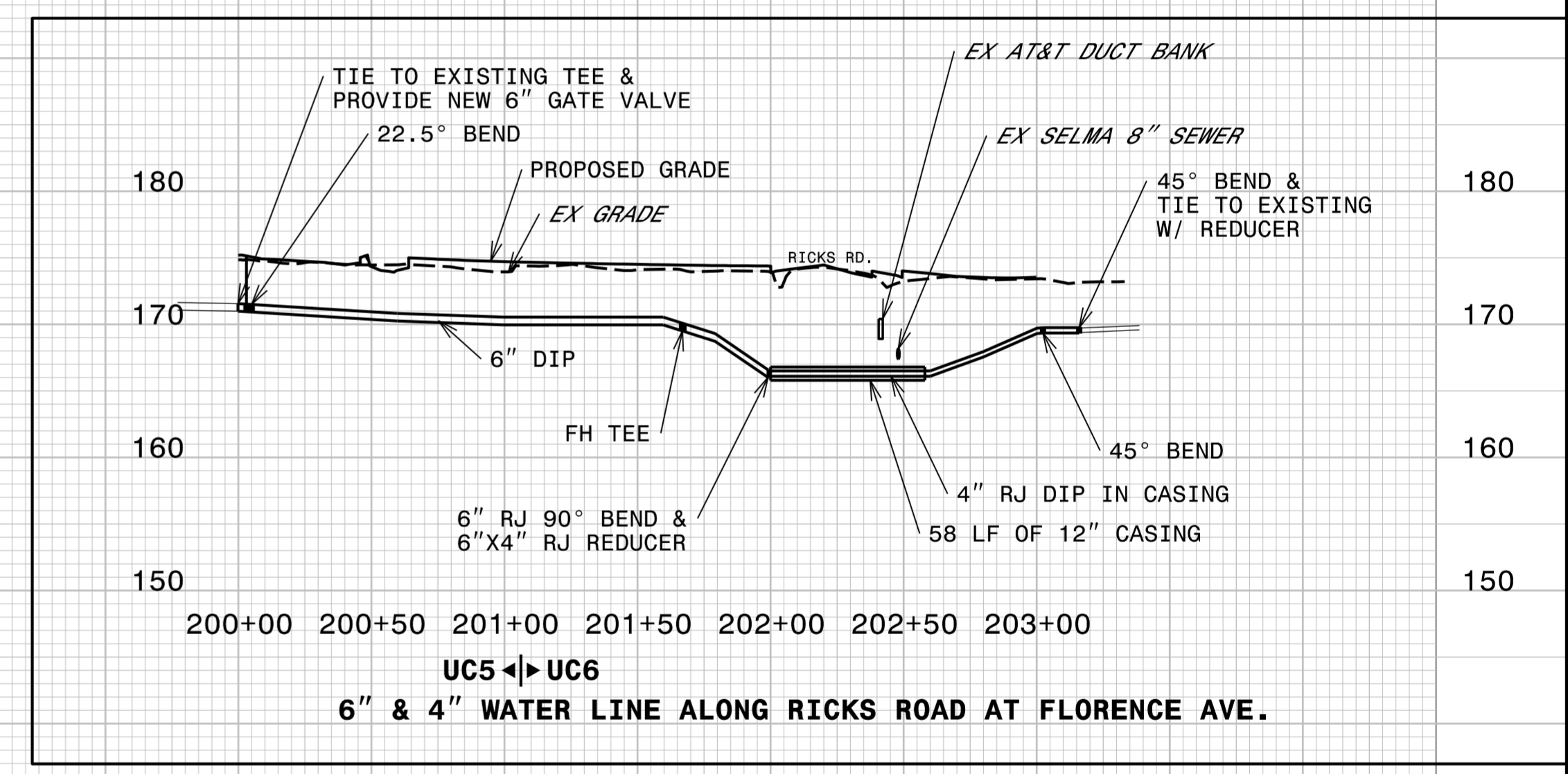
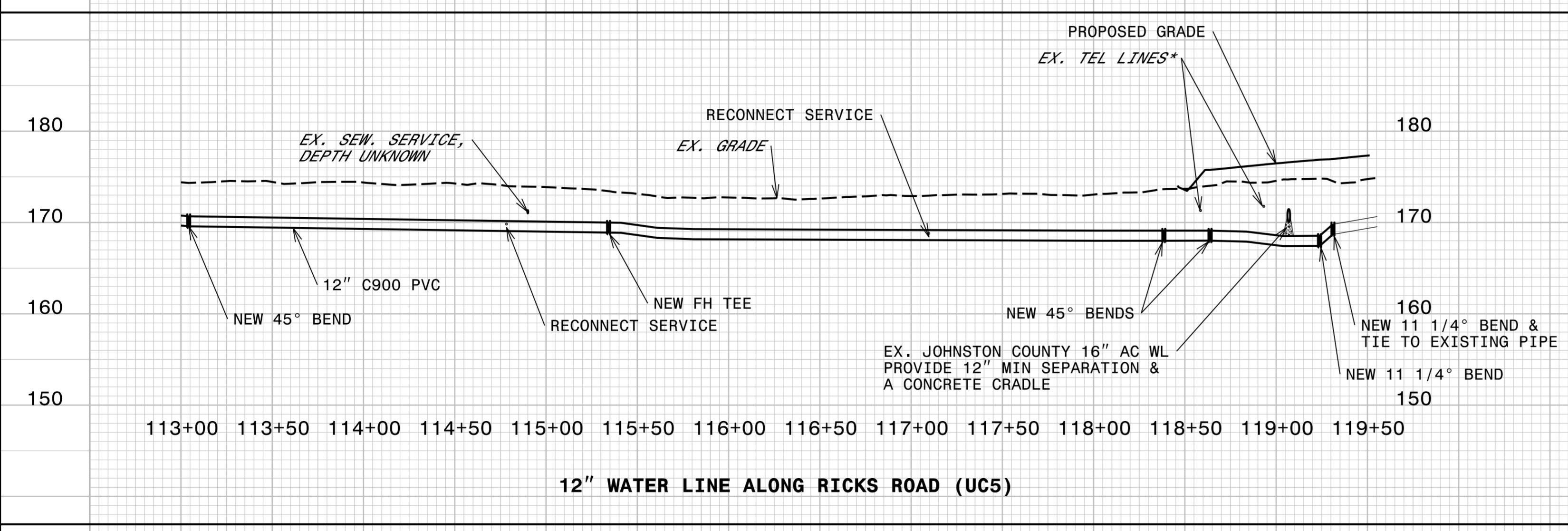
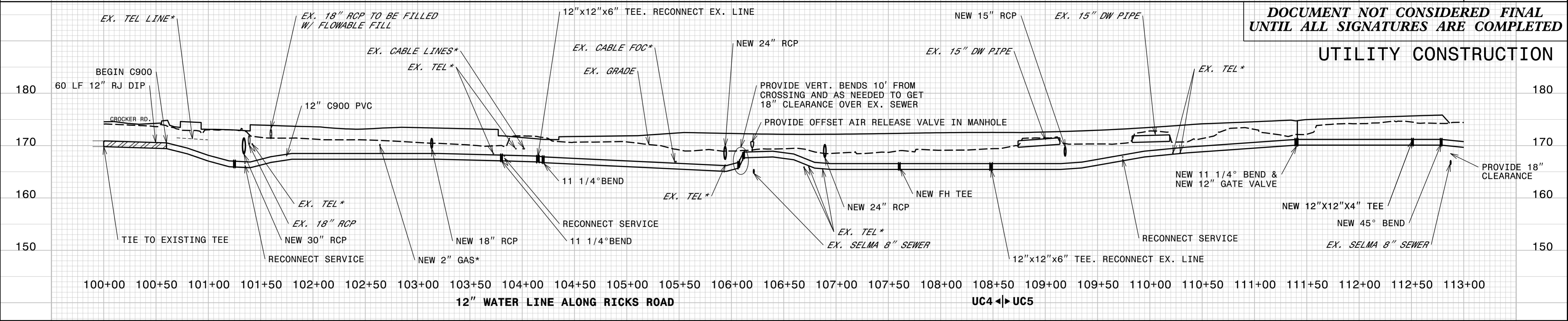
MAINTAIN 3' MINIMUM COVER (TYP)
PROVIDE 18" SEPARATION OVER TOP OF SANITARY SEWER.
PROVIDE 12" SEPARATION OVER/UNDER STORM PIPES OR PROVIDE CONCRETE CRADLE BETWEEN PIPES.



PROJECT REFERENCE NO. U-5795	SHEET NO. UC-7
DESIGNED BY: EMT	
DRAWN BY: EMT	
CHECKED BY: BAW	
APPROVED BY:	
REVISED:	NORTH CAROLINA DEPARTMENT OF TRANSPORTATION UTILITIES ENGINEERING SECTION PHONE: (919) 707-6690 FAX: (919) 250-4151

DOCUMENT NOT CONSIDERED FINAL UNTIL ALL SIGNATURES ARE COMPLETED

UTILITY CONSTRUCTION



R:\17\2017\PROJECTS\Engineering\UC\Proj\U5795\ut-pfl_UC07_psh.dgn