

3220 GLEN ROYAL RD. RALEIGH, NC 27617  
TELE 919.788.0224 FAX 919.788.0232  
NC LICENSE #P-0189

NAD 83/2001

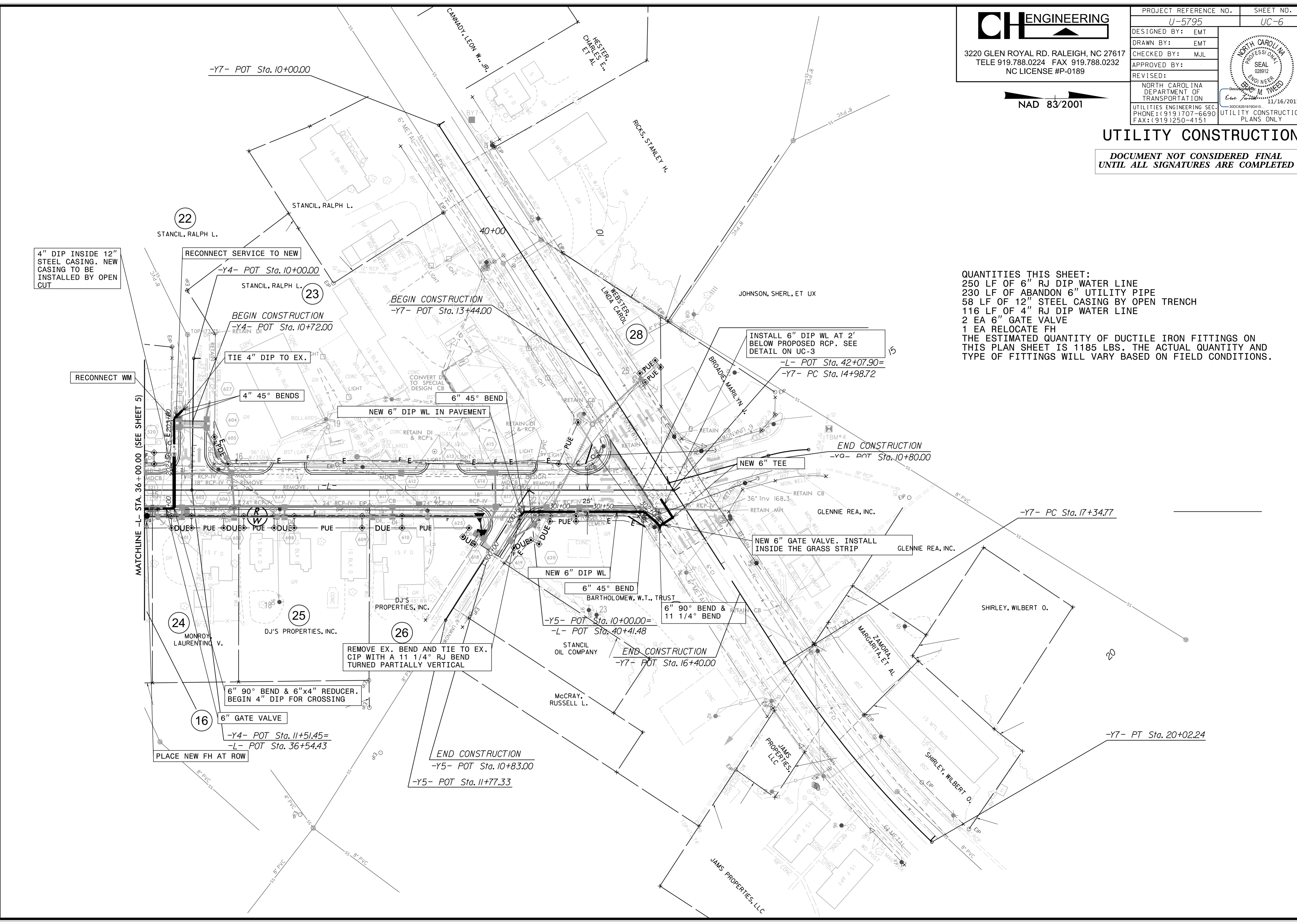
PROJECT REFERENCE NO.	SHEET NO.
U-5795	UC-6
DESIGNED BY: EMT	
DRAWN BY: EMT	
CHECKED BY: MJL	
APPROVED BY:	
REVISED:	11/16/2017
NORTH CAROLINA DEPARTMENT OF TRANSPORTATION	
UTILITIES ENGINEERING SEC. PHONE: (919) 707-6690 FAX: (919) 250-4151	
UTILITY CONSTRUCTION PLANS ONLY	

### UTILITY CONSTRUCTION

**DOCUMENT NOT CONSIDERED FINAL  
UNTIL ALL SIGNATURES ARE COMPLETED**

4" DIP INSIDE 12" STEEL CASING. NEW CASING TO BE INSTALLED BY OPEN CUT

**QUANTITIES THIS SHEET:**  
 250 LF OF 6" RJ DIP WATER LINE  
 230 LF OF ABANDON 6" UTILITY PIPE  
 58 LF OF 12" STEEL CASING BY OPEN TRENCH  
 116 LF OF 4" RJ DIP WATER LINE  
 2 EA 6" GATE VALVE  
 1 EA RELOCATE FH  
 THE ESTIMATED QUANTITY OF DUCTILE IRON FITTINGS ON THIS PLAN SHEET IS 1185 LBS. THE ACTUAL QUANTITY AND TYPE OF FITTINGS WILL VARY BASED ON FIELD CONDITIONS.



MATCHLINE -L- STA. 36+00.00 (SEE SHEET 5)

5/14/99

I:\16\2017\UC\Proj\U5795\ut\_rdy06\_UC06\_psh.dgn