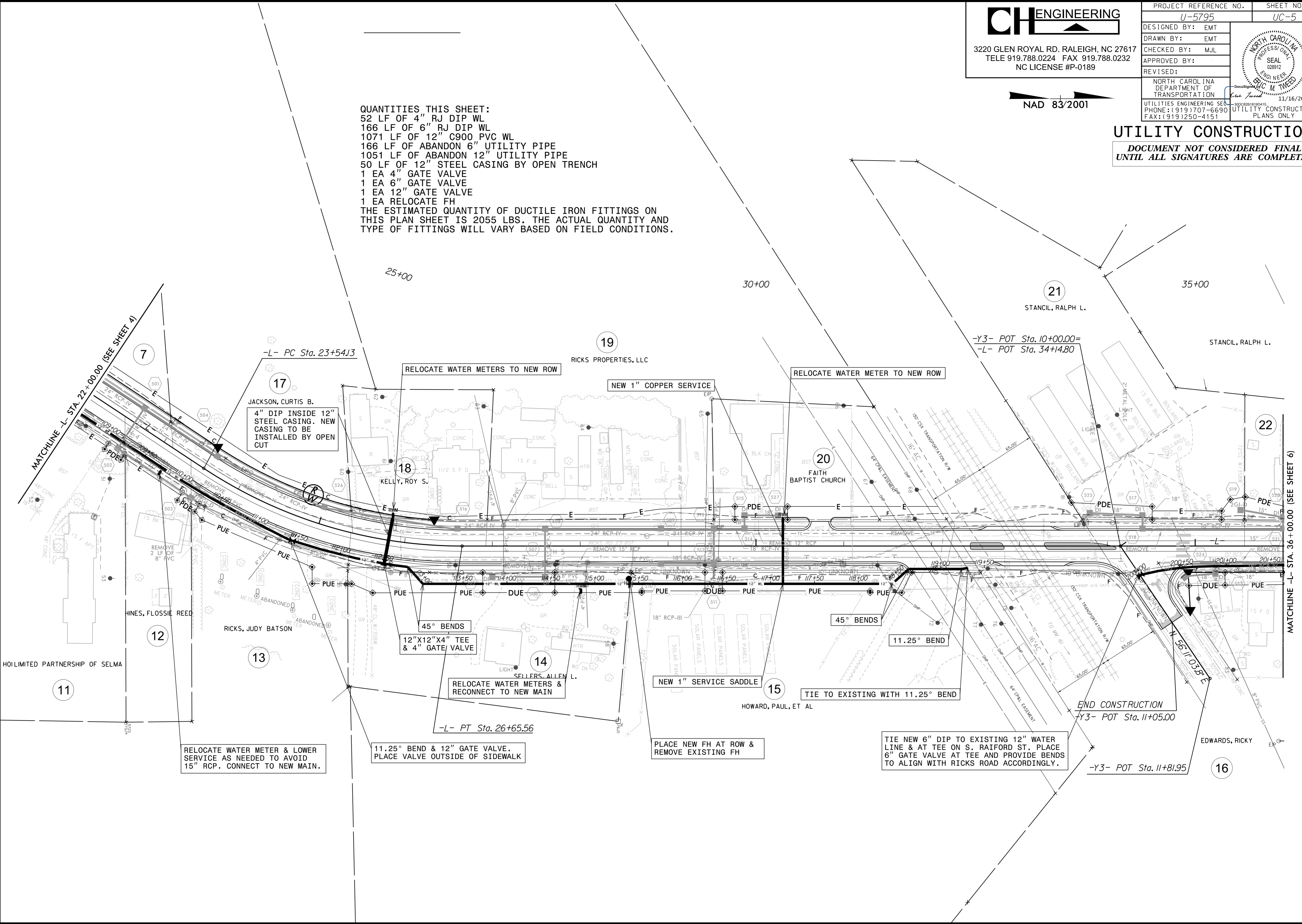


UTILITY CONSTRUCTION
 DOCUMENT NOT CONSIDERED FINAL
 UNTIL ALL SIGNATURES ARE COMPLETED

QUANTITIES THIS SHEET:
 52 LF OF 4" RJ DIP WL
 166 LF OF 6" RJ DIP WL
 1071 LF OF 12" C900 PVC WL
 166 LF OF ABANDON 6" UTILITY PIPE
 1051 LF OF ABANDON 12" UTILITY PIPE
 50 LF OF 12" STEEL CASING BY OPEN TRENCH
 1 EA 4" GATE VALVE
 1 EA 6" GATE VALVE
 1 EA 12" GATE VALVE
 1 EA RELOCATE FH
 THE ESTIMATED QUANTITY OF DUCTILE IRON FITTINGS ON THIS PLAN SHEET IS 2055 LBS. THE ACTUAL QUANTITY AND TYPE OF FITTINGS WILL VARY BASED ON FIELD CONDITIONS.



MATCHLINE -L- STA. 22+00.00 (SEE SHEET 4)

MATCHLINE -L- STA. 36+00.00 (SEE SHEET 6)

RELOCATE WATER METER & LOWER SERVICE AS NEEDED TO AVOID 15" RCP. CONNECT TO NEW MAIN.

11.25° BEND & 12" GATE VALVE. PLACE VALVE OUTSIDE OF SIDEWALK

PLACE NEW FH AT ROW & REMOVE EXISTING FH

TIE NEW 6" DIP TO EXISTING 12" WATER LINE & AT TEE ON S. RAIFORD ST. PLACE 6" GATE VALVE AT TEE AND PROVIDE BENDS TO ALIGN WITH RICKS ROAD ACCORDINGLY.

END CONSTRUCTION
 -Y3- POT Sta. 11+05.00

-Y3- POT Sta. 11+81.95

-L- PT Sta. 26+65.56

-L- PC Sta. 23+54.13

-Y3- POT Sta. 10+00.00=
 -L- POT Sta. 34+4.80

11/16/2017 UC\Proj\U5795\ut_r0505_psh.dgn
 5/14/99