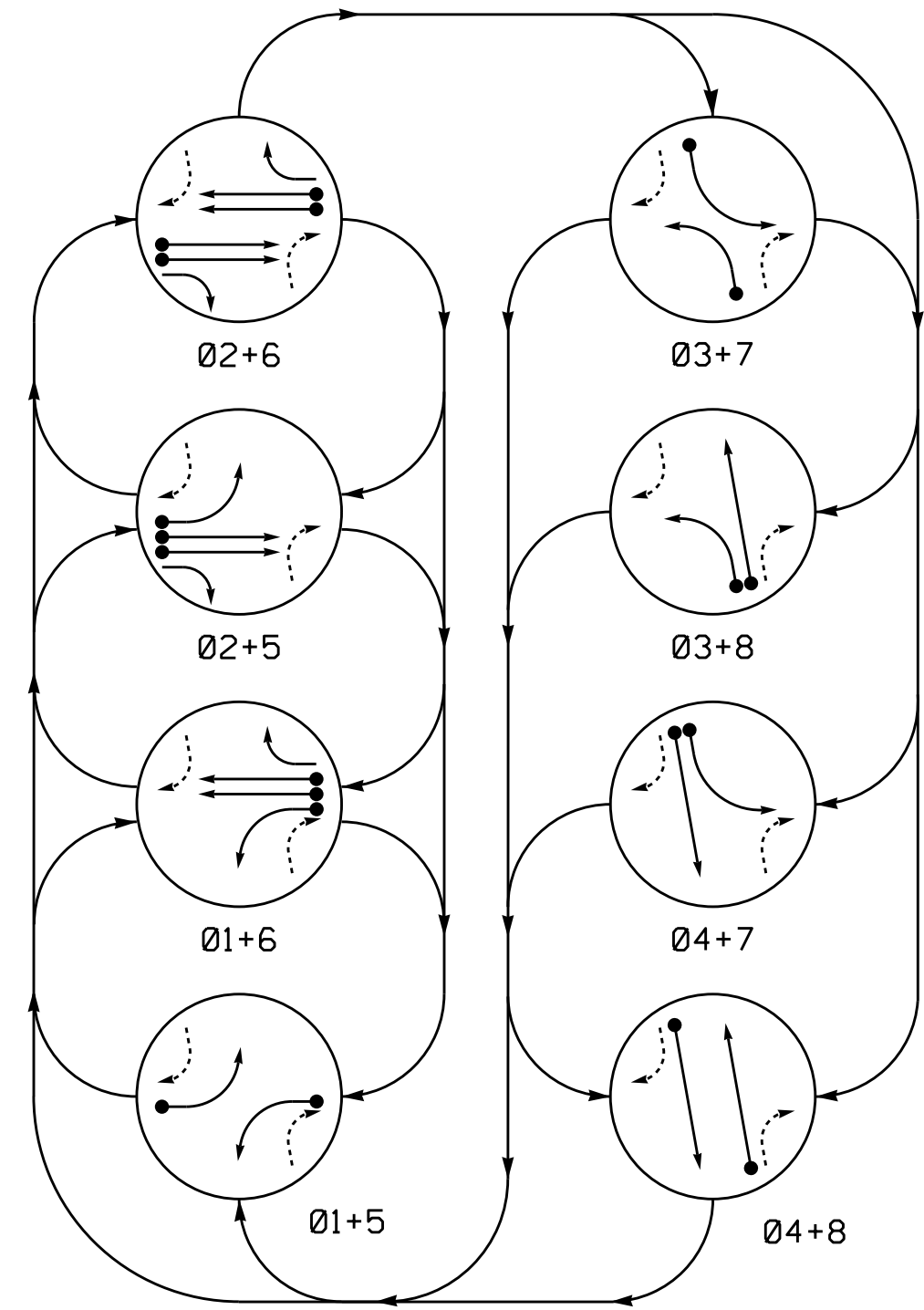


PHASING DIAGRAM



PHASING DIAGRAM DETECTION LEGEND

- ◀● DETECTED MOVEMENT
- ◀ UNDETECTED MOVEMENT (OVERLAP)
- ◀--- UNSIGNALIZED MOVEMENT
- ◀--- PEDESTRIAN MOVEMENT

SIGNAL FACE I.D.

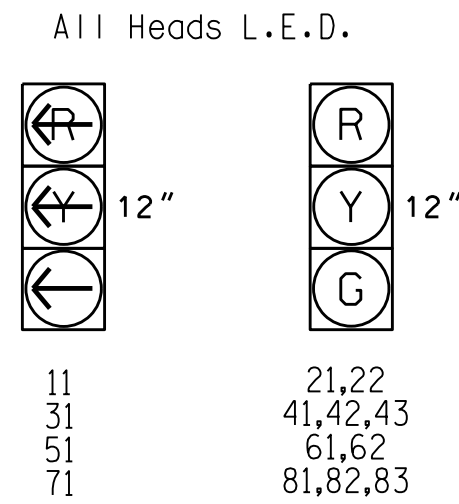


TABLE OF OPERATION

SIGNAL FACE	PHASE								FLASH
	Ø1+5	Ø1+6	Ø2+5	Ø2+6	Ø3+7	Ø3+8	Ø4+7	Ø4+8	
11	---	---	RR	RR	RR	RR	RR	RR	---
21,22	R	R	G	G	R	R	R	R	Y
31	---	---	RR	RR	---	---	RR	RR	---
41,42,43	R	R	R	R	R	R	G	G	---
51	---	---	RR	RR	RR	RR	RR	RR	---
61,62	R	G	R	G	R	R	R	R	Y
71	---	---	RR	RR	---	---	RR	RR	---
81,82,83	R	R	R	R	R	G	R	G	---

OASIS 2070 LOOP & DETECTOR INSTALLATION CHART

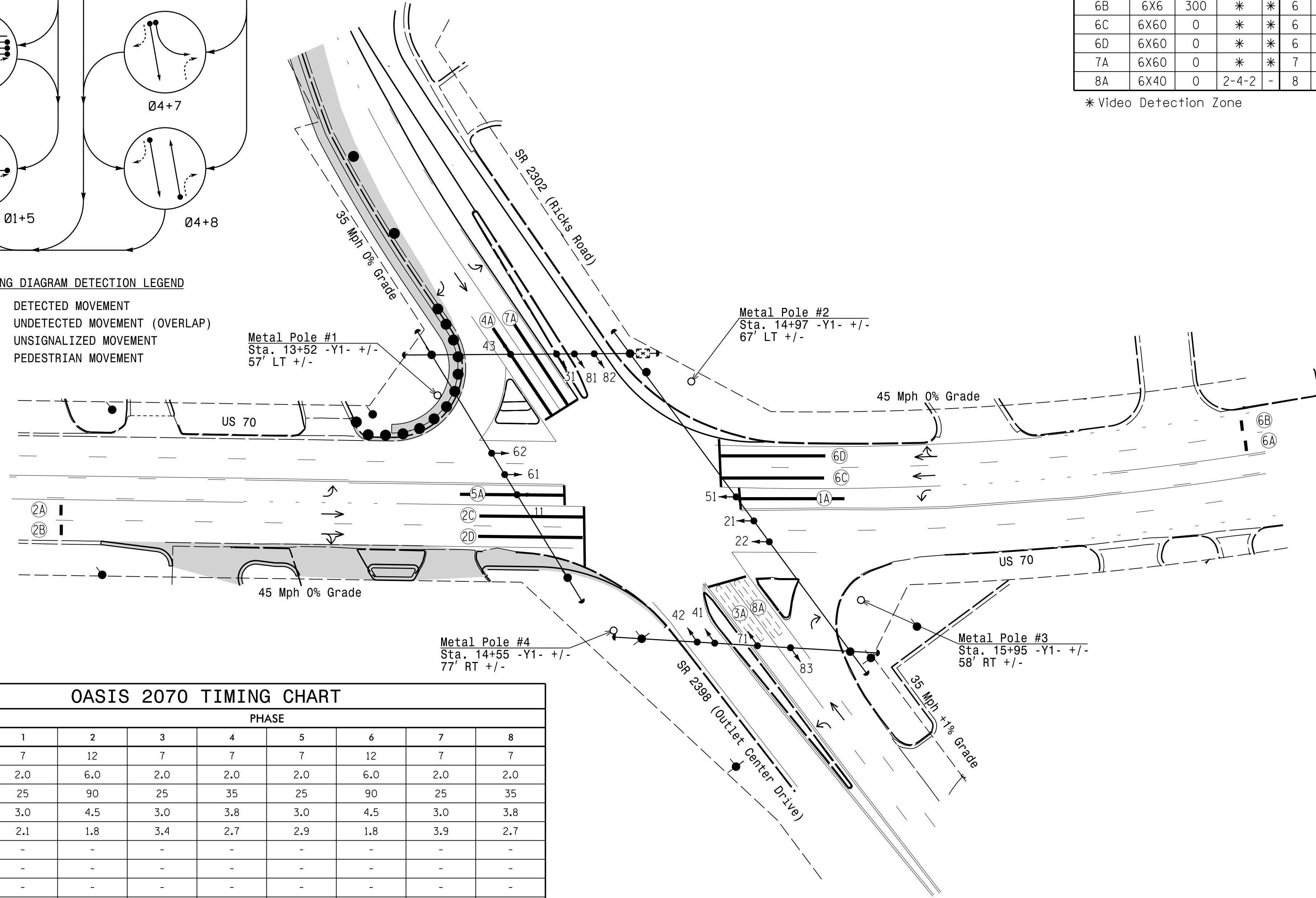
LOOP	SIZE (FT)	DISTANCE FROM STOPBAR (FT)	TURNS	NEW LOOP	DETECTOR PROGRAMMING				SYSTEM LOOP	NEW CARD	
					PHASE	CALLING	EXTENSION	FULL TIME DELAY			
1A	6X60	0	*	*	1	Y	Y	-	-	3	-
2A	6X6	300	*	*	2	Y	Y	-	-	-	-
2B	6X6	300	*	*	2	Y	Y	-	-	-	-
2C	6X60	0	*	*	2	Y	Y	2.0	5	-	-
2D	6X60	0	*	*	2	Y	Y	2.0	5	-	-
3A	6X40	0	2-4-2	-	3	Y	Y	-	-	-	-
4A	6X60	0	*	*	4	Y	Y	-	-	-	-
5A	6X60	0	*	*	5	Y	Y	-	-	3	-
6A	6X6	300	*	*	6	Y	Y	-	-	-	-
6B	6X6	300	*	*	6	Y	Y	-	-	-	-
6C	6X60	0	*	*	6	Y	Y	2.0	5	-	-
6D	6X60	0	*	*	6	Y	Y	2.0	5	-	-
7A	6X60	0	*	*	7	Y	Y	-	-	-	-
8A	6X40	0	2-4-2	-	8	Y	Y	-	-	-	-

* Video Detection Zone

8 Phase Fully Actuated US 70 (Selma) CLS

NOTES

- Refer to "Roadway Standard Drawings NCDOT" dated January 2018 and "Standard Specifications for Roads and Structures" dated January 2018.
- Do not program signal for late night flashing operation unless otherwise directed by the Engineer.
- Phase 1 and/or phase 5 may be lagged.
- Phase 3 and/or phase 7 may be lagged.
- Set all detector units to presence mode.
- Locate new cabinet so as not to obstruct sight distance of vehicles turning right on red.
- Maximum times shown in timing chart are for free-run operation only. Coordinated signal system timing values supersede these values.
- Closed loop system data: Master Asset #, Controller Asset #0383.



OASIS 2070 TIMING CHART

FEATURE	PHASE							
	1	2	3	4	5	6	7	8
Min Green 1 *	7	12	7	7	7	12	7	7
Extension 1 *	2.0	6.0	2.0	2.0	2.0	6.0	2.0	2.0
Max Green 1 *	25	90	25	35	25	90	25	35
Yellow Clearance	3.0	4.5	3.0	3.8	3.0	4.5	3.0	3.8
Red Clearance	2.1	1.8	3.4	2.7	2.9	1.8	3.9	2.7
Walk 1 *	-	-	-	-	-	-	-	-
Don't Walk 1	-	-	-	-	-	-	-	-
Seconds Per Actuation *	-	-	-	-	-	-	-	-
Max Variable Initial *	-	-	-	-	-	-	-	-
Time Before Reduction *	-	15	-	-	-	15	-	-
Time To Reduce *	-	45	-	-	-	45	-	-
Minimum Gap	-	3.0	-	-	-	3.0	-	-
Recall Mode	-	MIN RECALL	-	-	-	MIN RECALL	-	-
Vehicle Call Memory	-	YELLOW	-	-	-	YELLOW	-	-
Dual Entry	-	-	-	-	-	-	-	-
Simultaneous Gap	ON	ON	ON	ON	ON	ON	ON	ON

* These values may be field adjusted. Do not adjust Min Green and Extension times for phases 2 and 6 lower than what is shown. Min Green for all other phases should not be lower than 4 seconds.

LEGEND

- | | | | |
|--|---|--|---|
| | PROPOSED Traffic Signal Head | | EXISTING Traffic Signal Head |
| | PROPOSED Modified Signal Head | | EXISTING N/A |
| | PROPOSED Sign | | EXISTING Sign |
| | PROPOSED Pedestrian Signal Head With Push Button & Sign | | EXISTING Pedestrian Signal Head With Push Button & Sign |
| | PROPOSED Signal Pole with Guy | | EXISTING Signal Pole with Guy |
| | PROPOSED Signal Pole with Sidewalk Guy | | EXISTING Signal Pole with Sidewalk Guy |
| | PROPOSED Inductive Loop Detector | | EXISTING Inductive Loop Detector |
| | PROPOSED Controller & Cabinet | | EXISTING Controller & Cabinet |
| | PROPOSED Junction Box | | EXISTING Junction Box |
| | PROPOSED 2-in Underground Conduit | | EXISTING 2-in Underground Conduit |
| | PROPOSED Right of Way | | EXISTING Right of Way |
| | PROPOSED Directional Arrow | | EXISTING Directional Arrow |
| | PROPOSED Video Detection Area | | EXISTING Video Detection Area |

Signal Upgrade - TCP Phase I

<p>Prepared in the Offices of: Transportation Mobility and Safety Division NORTH CAROLINA DEPARTMENT OF TRANSPORTATION SIGNAL DESIGN SECTION</p>	US 70 at SR 2302 (Ricks Road)/ SR 2398 (Outlet Center Drive) Division 4 Johnston County Selma		SEAL JASON P. GALLAWAY ENGINEER 029904 9/13/2017
	PLAN DATE: August 2017 PREPARED BY: JPG SCALE: 1" = 40' REVISIONS:	REVIEWED BY: JPG DATE:	

13-SEP-2017 13:29
 R:\Projects\04038311\Signal\04038311_Sig.dgn
 User: jgallaway