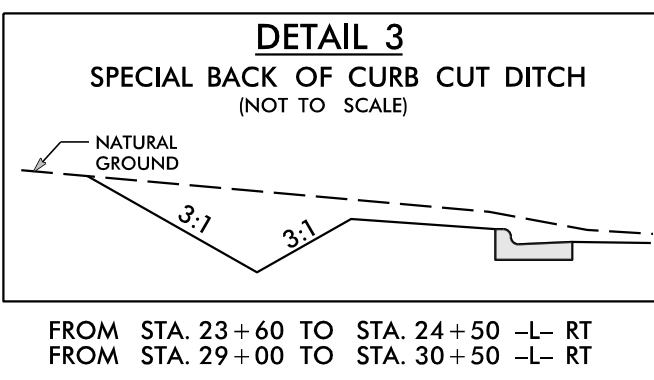


CLEARING AND GRUBBING PLAN

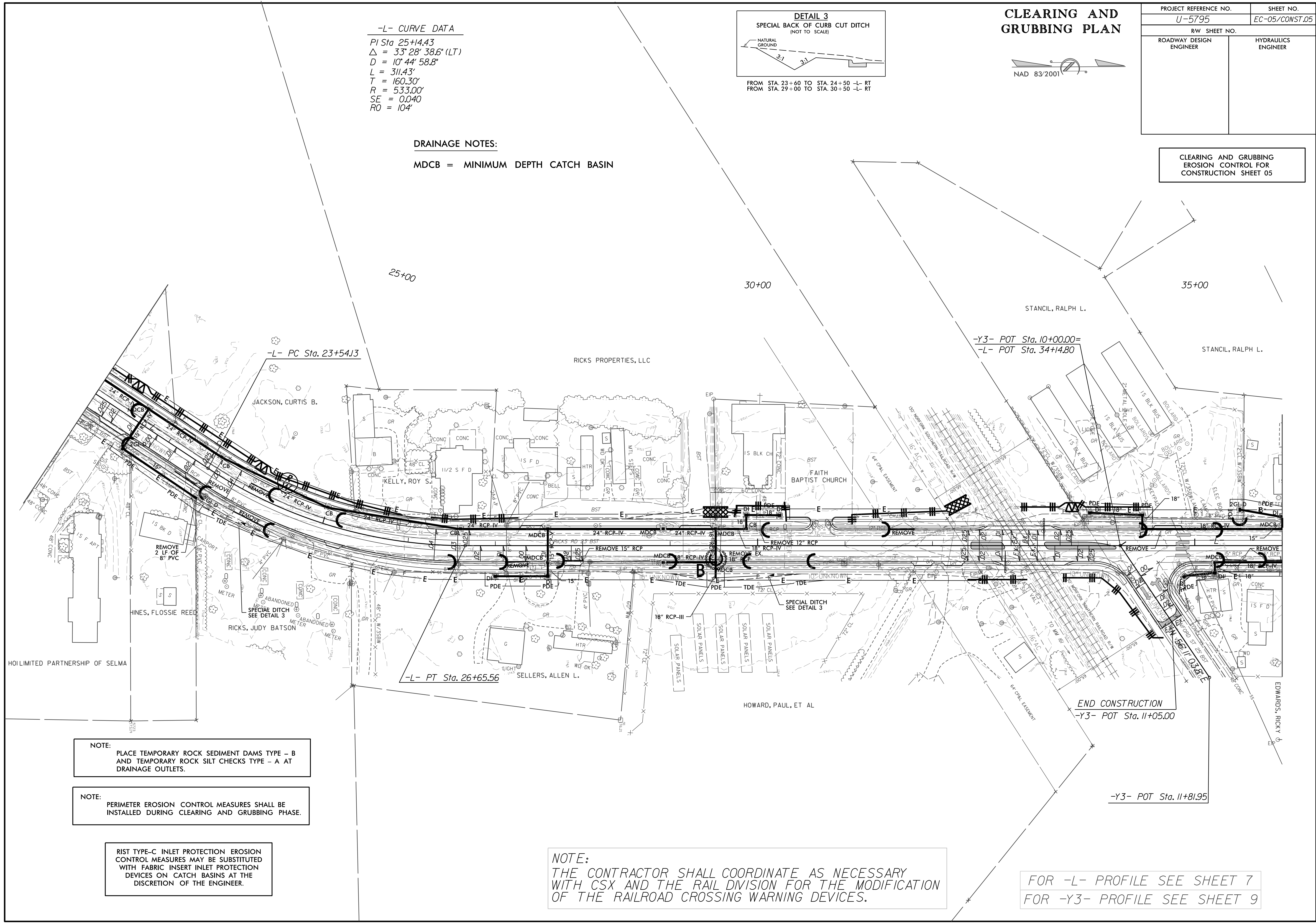
PROJECT REFERENCE NO. <i>U-5795</i>	SHEET NO. <i>EC-05/CONST.05</i>
RW SHEET NO.	
ROADWAY DESIGN ENGINEER	HYDRAULICS ENGINEER



-L- CURVE DATA
 PI Sta 25+14.43
 $\Delta = 33^\circ 28' 38.6''$ (LT)
 $D = 10^\circ 44' 58.8''$
 $L = 311.43'$
 $T = 160.30'$
 $R = 533.00'$
 $SE = 0.040$
 $RO = 104'$

DRAINAGE NOTES:
 MDCB = MINIMUM DEPTH CATCH BASIN

CLEARING AND GRUBBING EROSION CONTROL FOR CONSTRUCTION SHEET 05



NOTE:
 PLACE TEMPORARY ROCK SEDIMENT DAMS TYPE - B AND TEMPORARY ROCK SILT CHECKS TYPE - A AT DRAINAGE OUTLETS.

NOTE:
 PERIMETER EROSION CONTROL MEASURES SHALL BE INSTALLED DURING CLEARING AND GRUBBING PHASE.

REMOVE TYPE-C INLET PROTECTION EROSION CONTROL MEASURES MAY BE SUBSTITUTED WITH FABRIC INSERT INLET PROTECTION DEVICES ON CATCH BASINS AT THE DISCRETION OF THE ENGINEER.

NOTE:
 THE CONTRACTOR SHALL COORDINATE AS NECESSARY WITH CSX AND THE RAIL DIVISION FOR THE MODIFICATION OF THE RAILROAD CROSSING WARNING DEVICES.

FOR -L- PROFILE SEE SHEET 7
 FOR -Y3- PROFILE SEE SHEET 9