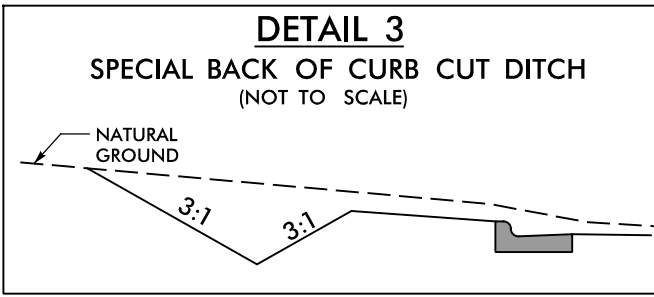
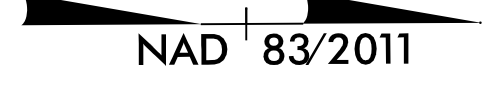


8.17.17/19

-L- CURVE DATA
 PI Sta 25+14.43
 $\Delta = 33^\circ 28' 38.6" (LT)$
 $D = 10^\circ 44' 58.8"$
 $L = 311.43'$
 $T = 160.30'$
 $R = 533.00'$
 $SE = 0.040$
 $RO = 104'$



NOTE: ALL CONCRETE ISLAND RADII ARE 2' UNLESS OTHERWISE LABELED.



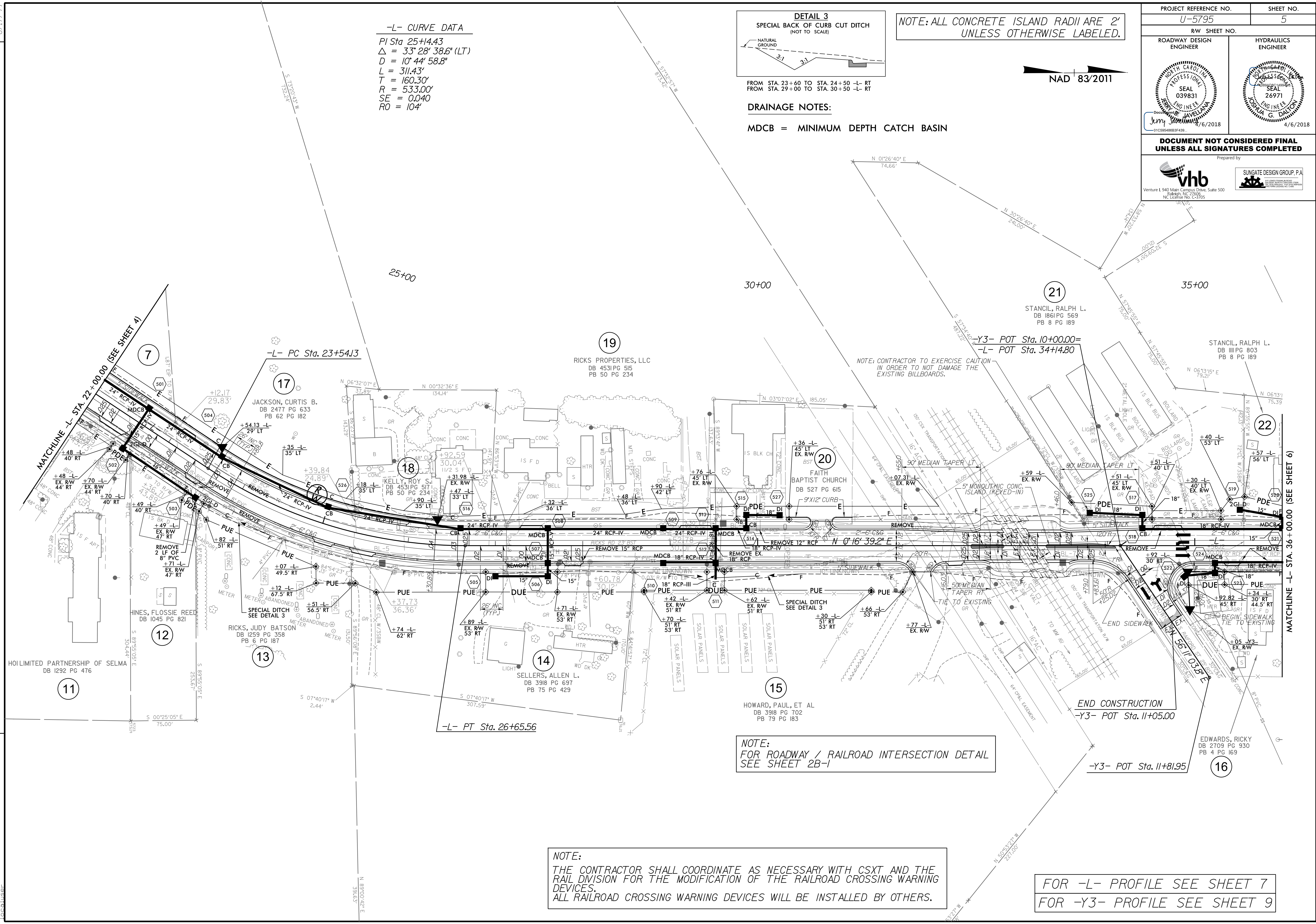
FROM STA. 23+60 TO STA. 24+50 -L- RT
 FROM STA. 29+00 TO STA. 30+50 -L- RT

DRAINAGE NOTES:

MDCB = MINIMUM DEPTH CATCH BASIN

PROJECT REFERENCE NO. U-5795	SHEET NO. 5
ROADWAY DESIGN ENGINEER	HYDRAULICS ENGINEER
DOCUMENT NOT CONSIDERED FINAL UNLESS ALL SIGNATURES COMPLETED	
Prepared by SINGATE DESIGN GROUP, P.A.	

REVISIONS



NOTE: CONTRACTOR TO EXERCISE CAUTION IN ORDER TO NOT DAMAGE THE EXISTING BILLBOARDS.

NOTE: FOR ROADWAY / RAILROAD INTERSECTION DETAIL SEE SHEET 2B-1

NOTE: THE CONTRACTOR SHALL COORDINATE AS NECESSARY WITH CSXT AND THE RAIL DIVISION FOR THE MODIFICATION OF THE RAILROAD CROSSING WARNING DEVICES. ALL RAILROAD CROSSING WARNING DEVICES WILL BE INSTALLED BY OTHERS.

FOR -L- PROFILE SEE SHEET 7
 FOR -Y3- PROFILE SEE SHEET 9

1/5/2018 1:59:05 PM d:_psh\05.dgn localuser