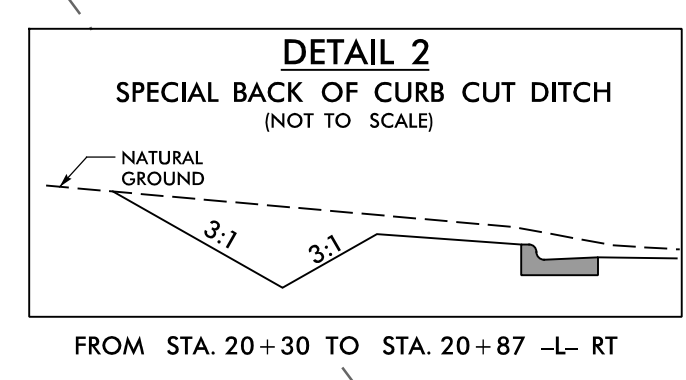
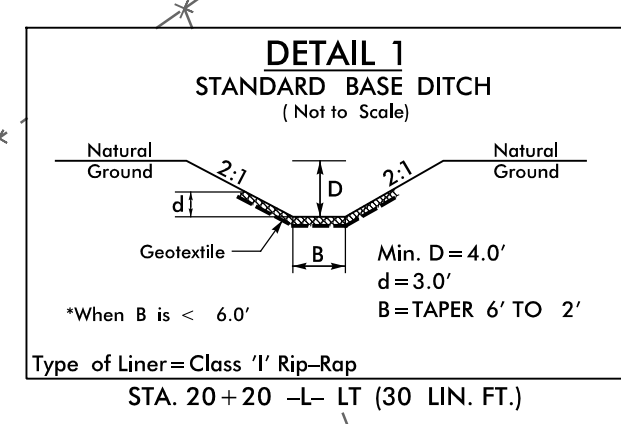


★ EXISTING SIGNAL TO BE MODIFIED

NOTE: ALL CONCRETE ISLAND RADII ARE 2' UNLESS OTHERWISE LABELED.

CURVE DATA

-L-	-Y1-
PI Sta 13+99.84	PI Sta 17+42.46
$\Delta = 31^{\circ} 11' 02.3" (RT)$	$\Delta = 13^{\circ} 46' 28.9" (LT)$
$D = 7^{\circ} 09' 43.1"$	$D = 3^{\circ} 29' 14.2"$
$L = 435.41'$	$L = 395.00'$
$T = 223.24'$	$T = 198.46'$
$R = 800.00'$	$R = 1,643.00'$
$SE = 0.035$	
$RO = 91'$	

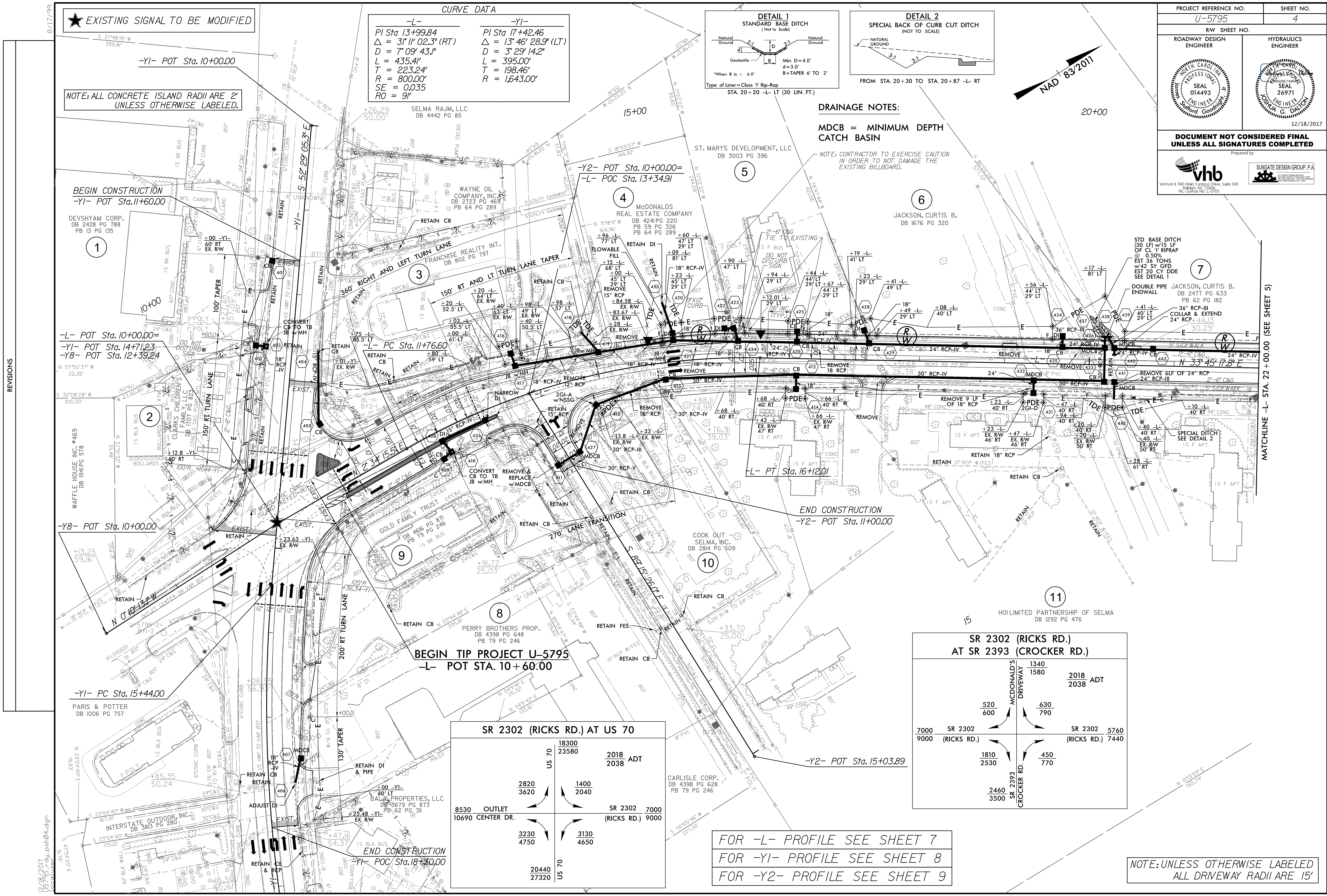


DRAINAGE NOTES:  
MDCB = MINIMUM DEPTH CATCH BASIN

NOTE: CONTRACTOR TO EXERCISE CAUTION IN ORDER TO NOT DAMAGE THE EXISTING BILLBOARD.



PROJECT REFERENCE NO. U-5795	SHEET NO. 4
ROADWAY DESIGN ENGINEER	HYDRAULICS ENGINEER
SEAL 014493 ENGINEER Shirley Goodwin	SEAL 26971 ENGINEER JONATHAN G. DARTON
12/18/2017	
DOCUMENT NOT CONSIDERED FINAL UNLESS ALL SIGNATURES COMPLETED	
Prepared by	



SR 2302 (RICKS RD.) AT US 70

70	18300	2018	7000
	23580	2038	(RICKS RD.) 9000
		ADT	
2820	1400		
3620	2040		
8530			
10690			
3230	3130		
4750	4650		
20440			
27320			

SR 2302 (RICKS RD.) AT SR 2393 (CROCKER RD.)

	1340	2018	5760
	1580	2038	(RICKS RD.) 7440
		ADT	
520	630		
600	790		
7000			
9000			
1810	450		
2530	770		
2460			
3500			

FOR -L- PROFILE SEE SHEET 7  
FOR -Y1- PROFILE SEE SHEET 8  
FOR -Y2- PROFILE SEE SHEET 9

NOTE: UNLESS OTHERWISE LABELED ALL DRIVEWAY RADII ARE 15'

REVISIONS

MATCHLINE -L- STA. 22+00.00 (SEE SHEET 5)