

NOTES

THE CONTRACTOR SHALL BE RESPONSIBLE FOR DETERMINING THE TOTAL QUANTITY OF CONDUIT NEEDED TO COMPLETE THE WORK AND THAT THE CONDUIT(S) ARE PLACED AT THE NOTED DIMENSION AND ABOVE THE BOTTOM OF THE GIRDER.

BRIDGE CONDUIT SYSTEM SHALL BE MEASURED AND PAID AS LINEAR FEET. THE PRICE SHALL INCLUDE ALL CONDUIT, HANGERS, STABILIZERS, EXPANSION JOINTS, CONCRETE INSERTS, PVC SLEEVES AND ALL NECESSARY HARDWARE TO COMPLETE THE WORK.

THE CONTRACTOR SHALL FIELD VERIFY THAT THE CONDUIT SYSTEM IS NOT IN CONFLICT WITH THE GUARDRAIL POSTS.

SEE DETAIL "C" FOR HANGER ASSEMBLY INSTALLATION.

PROVIDE TRANSITION ADAPTOR AND EXPANSION JOINT FOR CONDUIT AT END BENT #1 AND END BENT #2.

INSTALL STABILIZER'S MIDWAY BETWEEN DECK EXPANSION JOINTS. STABILIZER CAN NOT BE USED INSTEAD OF A HANGER ASSEMBLY.

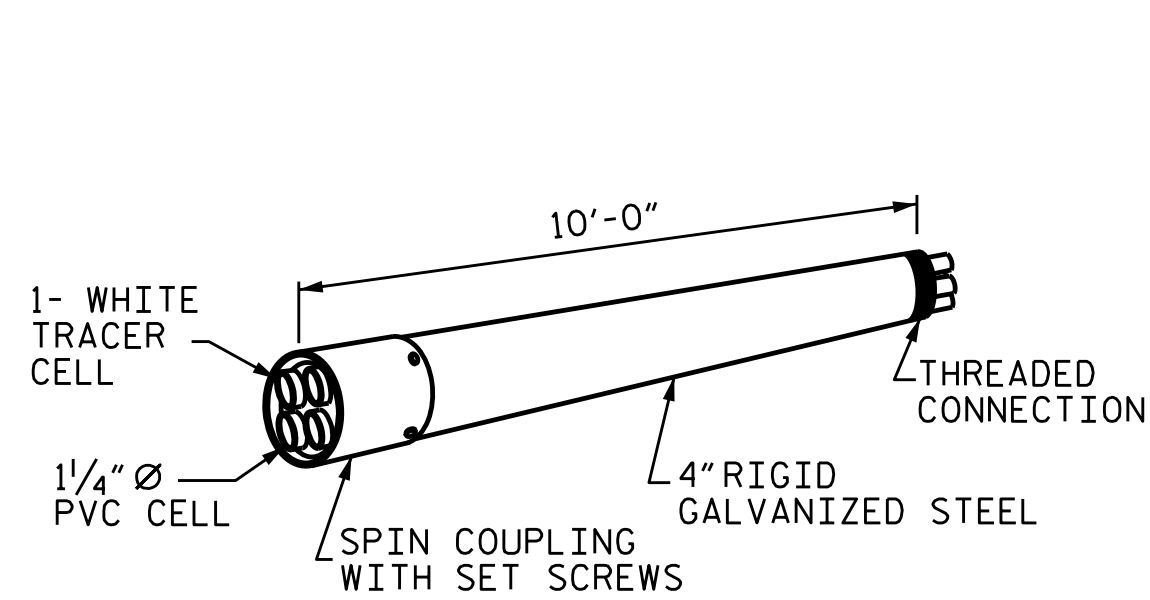
INSTALL EXPANSION JOINTS AT EACH BENT.

THE CONCRETE SCREW INSERT SHALL HAVE A ROD SIZE OF 5/8" AND A PULL FORCE OF 1260 lbs.

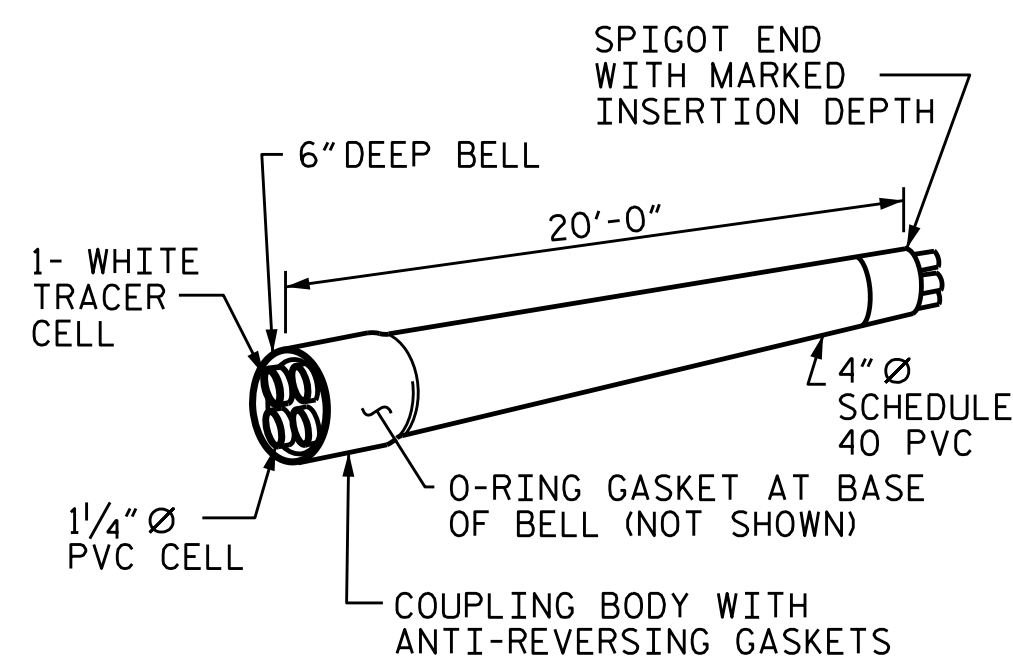
FOR BRIDGE CONDUIT SYSTEM, SEE SPECIAL PROVISIONS.

THE CONDUIT WILL BE INSTALLED AT A MINIMUM OF 1 FOOT ABOVE LOW STEEL.

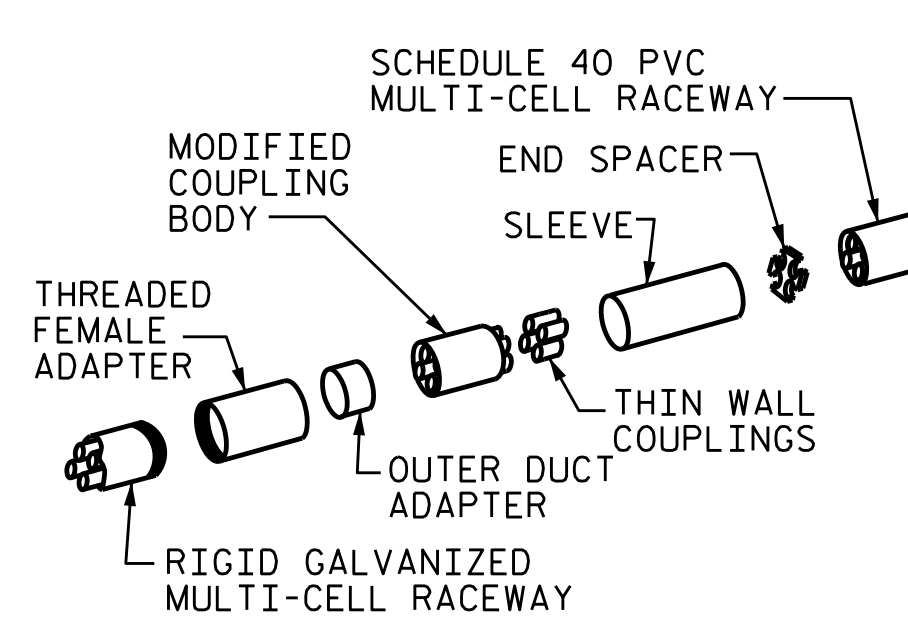
DETAILS SHOWN ARE FOR RGC CONDUIT, CONTRACTOR MAY USE FIBERGLASS REINFORCED EPOXY CONDUIT.



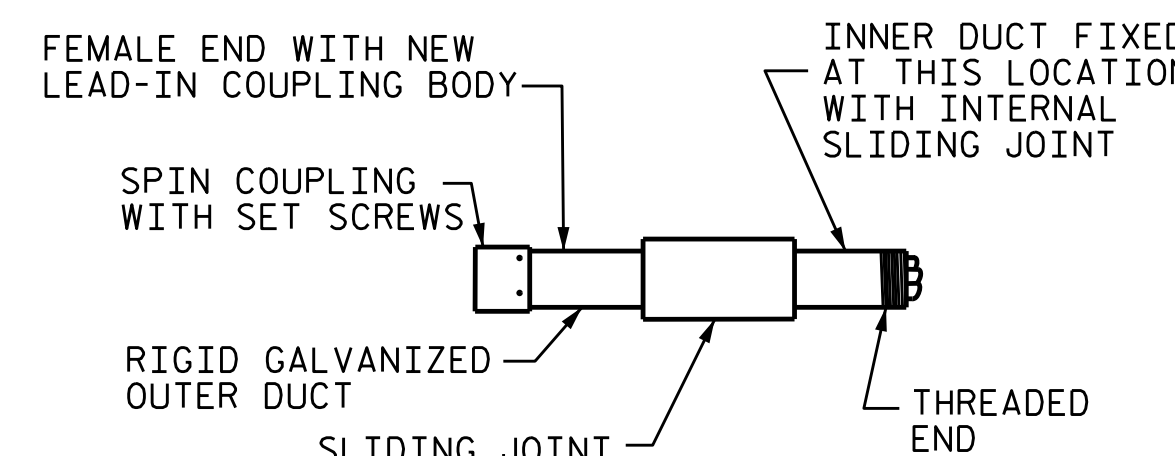
RIGID GALVANIZED (RGC) MULTI-CELL RACEWAY



SCHEDULE 40 PVC MULTI-CELL RACEWAY



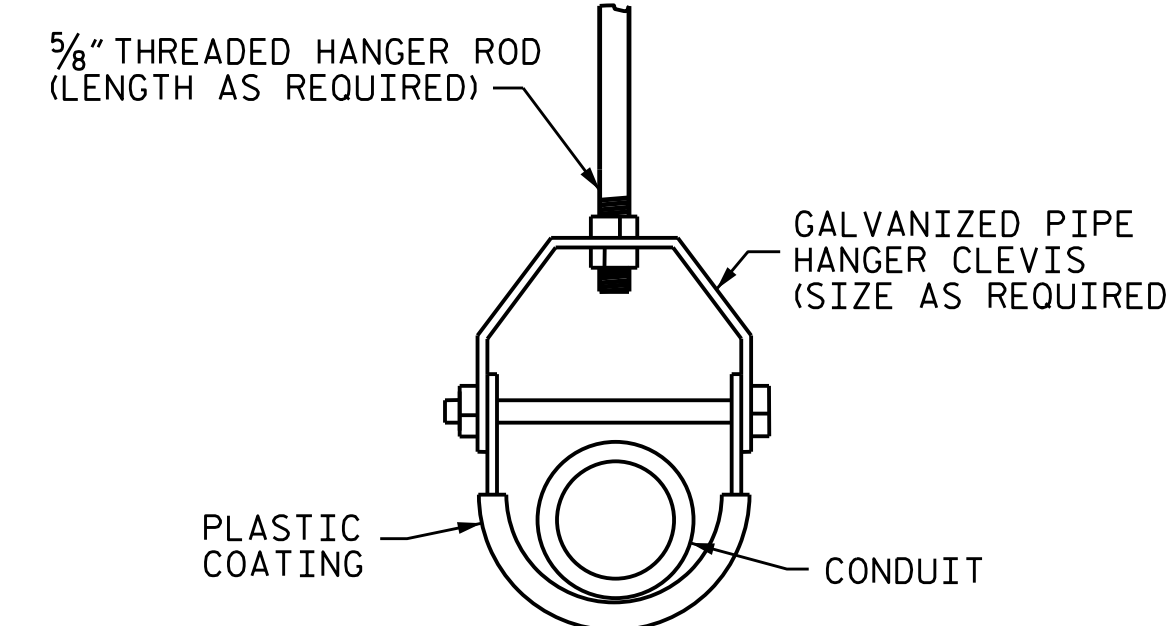
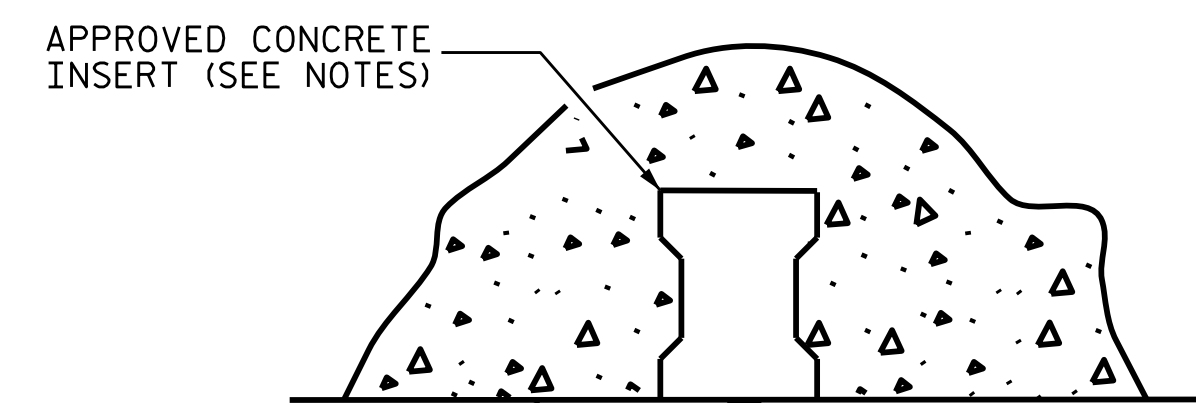
TRANSITION ADAPTER



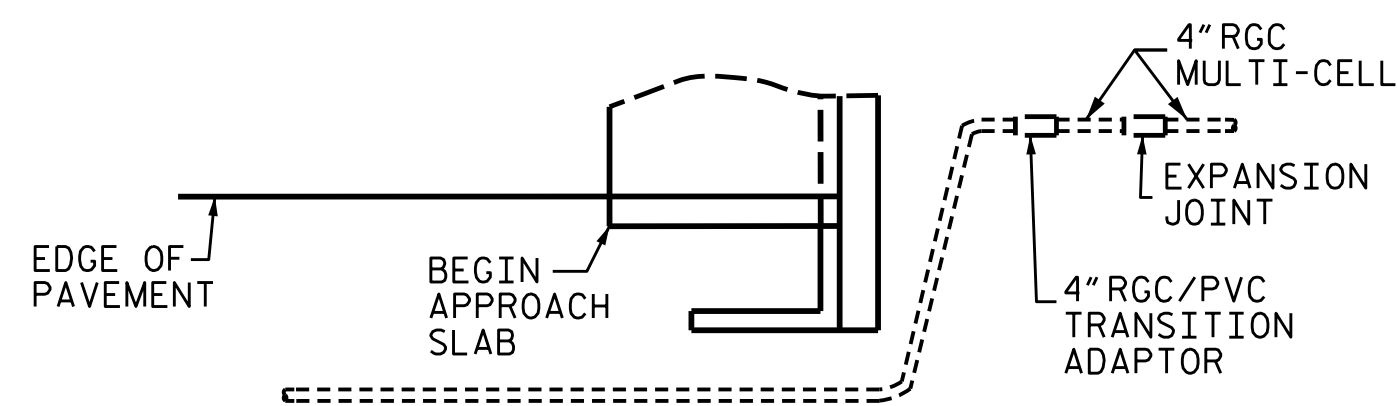
EXPANSION JOINT FITTING

DETAIL "D"

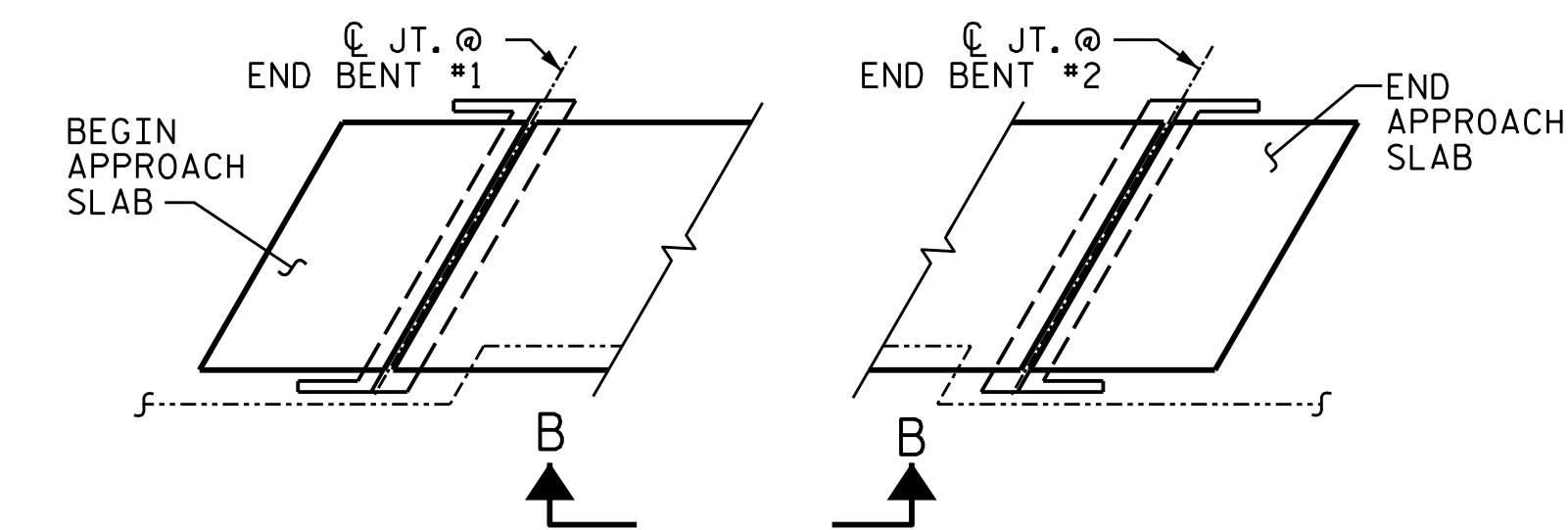
4" MULTI-CELL COMPONENTS



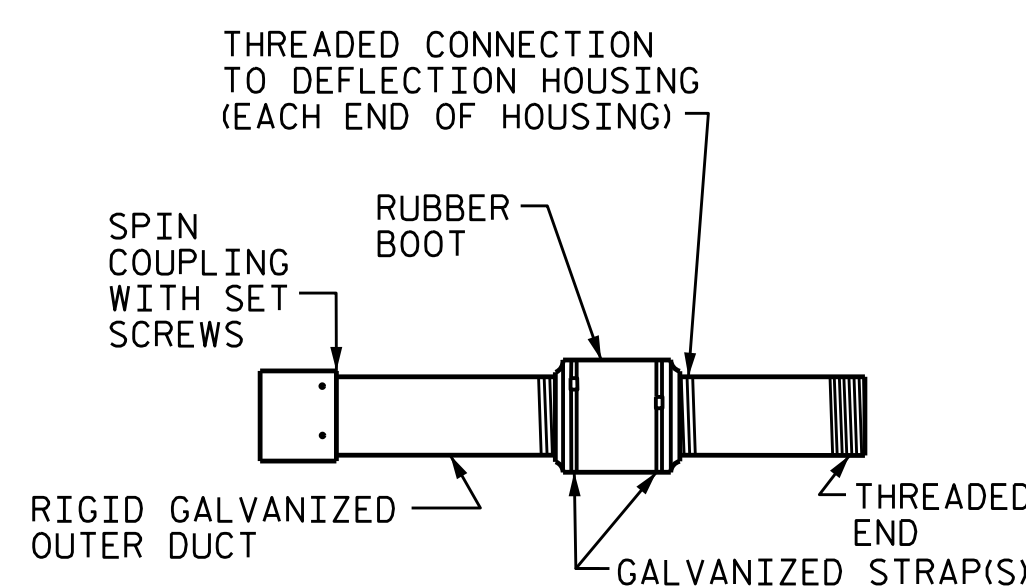
DETAIL "C" HANGER ASSEMBLY



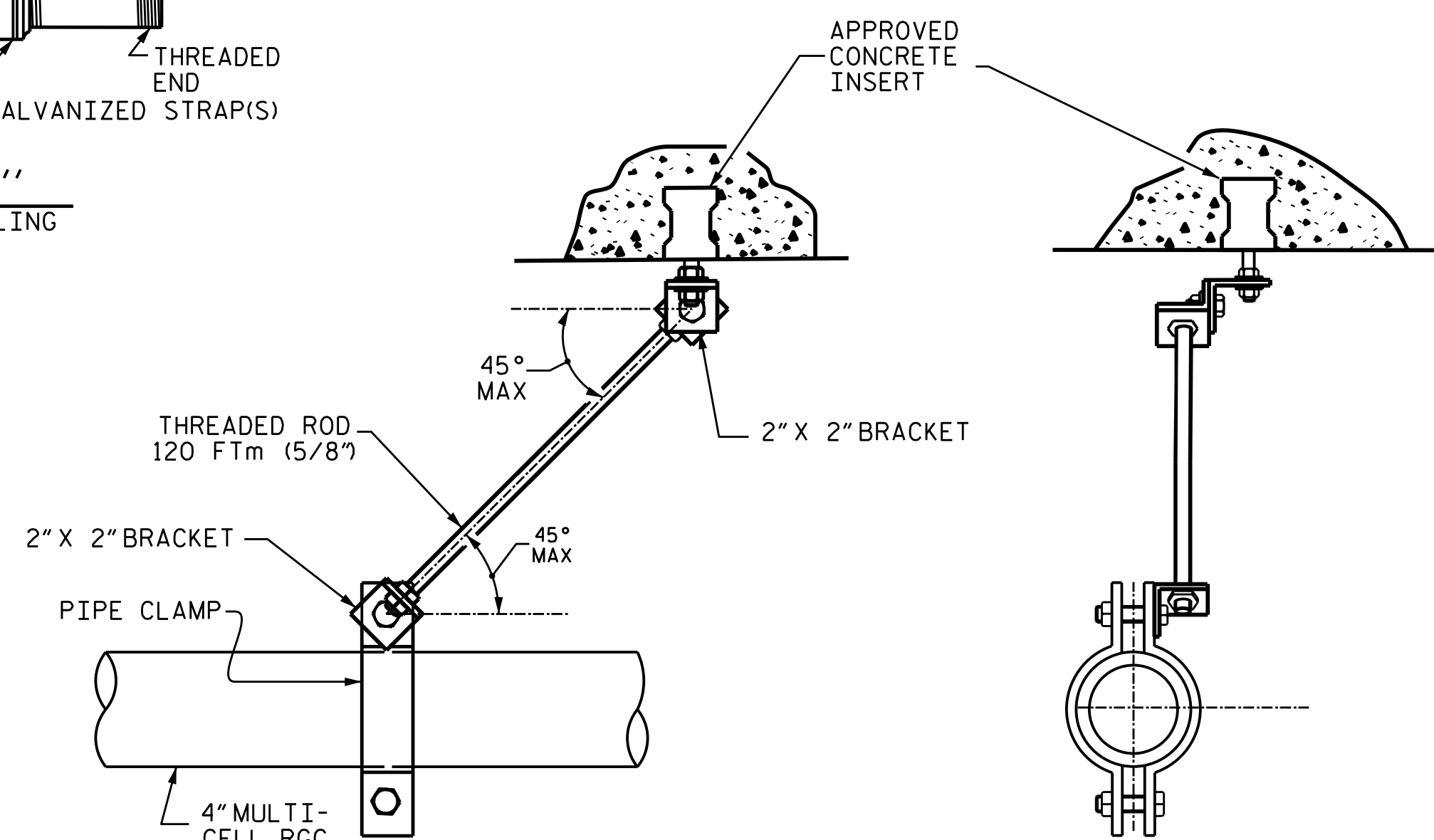
DETAIL "A" TERMINATION OF CONDUIT AT WING WALL



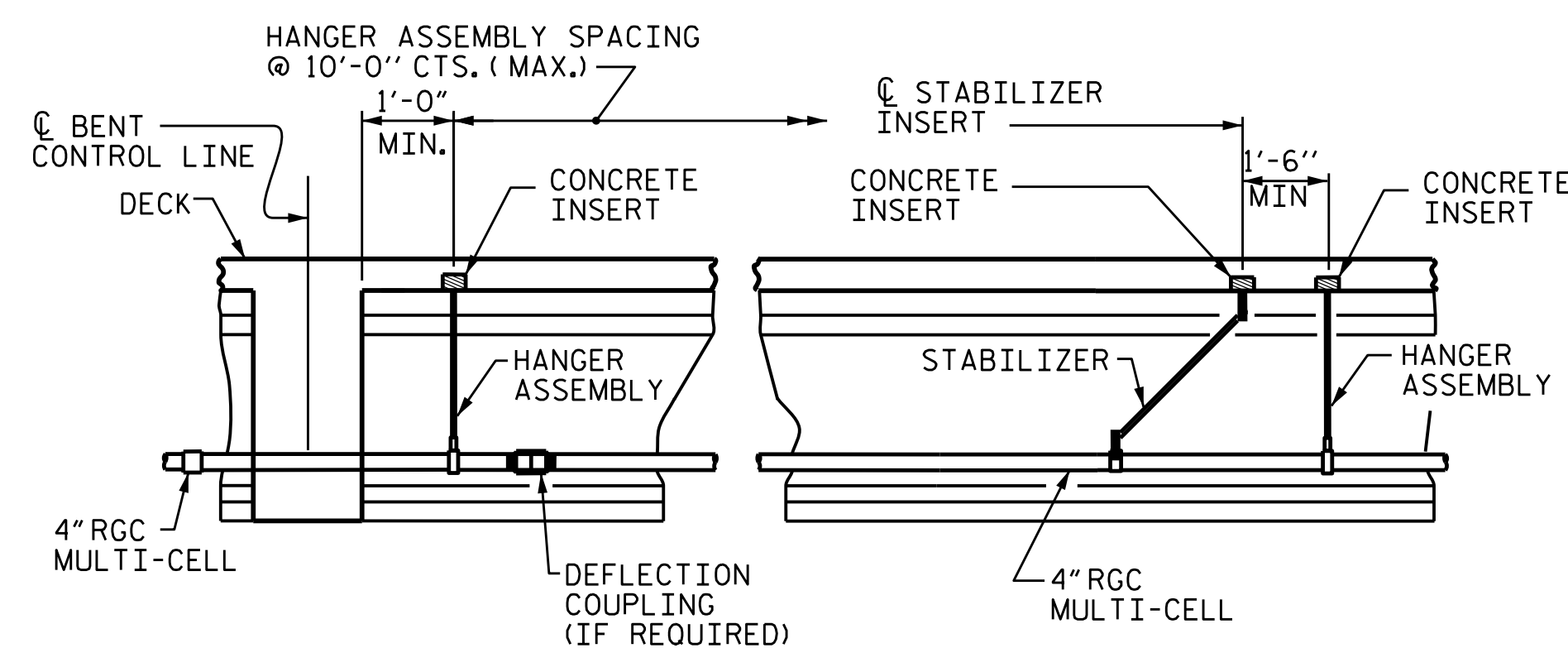
CONDUIT LAYOUT



DETAIL "F" DEFLECTION COUPLING



DETAIL "E" STABILIZER



VIEW B-B PRESTRESSED GIRDERS CONTINUOUS FOR LIVE LOAD

CONDUIT DETAILS

PROJECT NO. R-2633D
BRUNSWICK/NEW HANOVER COUNTY
STATION: -



STATE OF NORTH CAROLINA
DEPARTMENT OF TRANSPORTATION
RALEIGH

BRIDGE CONDUIT SYSTEM

ASSEMBLED BY : J.P. ADAMS DATE : 1/2018
CHECKED BY : D.S. STUTTS DATE : 1/2018
DRAWN BY : RW 2-4-03 TLA/GM
CHECKED BY : DBM 2-4-03 REV. 10/1/11 MAA/GM

DATE : 1/2018
DATE : 1/2018
TLA/GM
MAA/GM

DOCUMENT NOT CONSIDERED FINAL UNLESS ALL SIGNATURES COMPLETED

REVISIONS						SHEET NO.
NO.	BY:	DATE:	NO.	BY:	DATE:	S-1
1			3			TOTAL SHEETS
2			4			1

*****SYSTEM*****
*****DCN*****
*****USER*****