

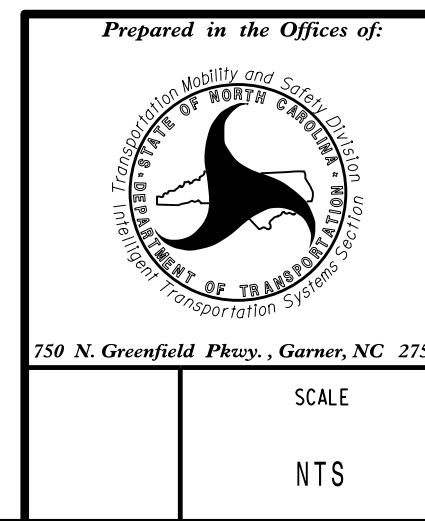
COLOR CODE
TIA/EIA 598-A

(1) BLUE	(7) RED
(2) ORANGE	(8) BLACK
(3) GREEN	(9) YELLOW
(4) BROWN	(10) VIOLET
(5) SLATE	(11) ROSE
(6) WHITE	(12) AQUA

LEGEND

X = FUSION SPLICE
 C = CAP IN TRAY
 EXPRESS = EXPRESS ENTIRE BUFFER TUBE THROUGH WITHOUT CUTTING

- NOTES**
1. UNUSED FIBER SHALL BE LEFT COILED AND STORED IN THE SPlice TRAY.
 2. UNUSED BUFFER TUBES SHALL BE LEFT COILED AND STORED IN THE SPlice TRAY.
 3. ETHERNET TERMINATION CONFIGURATIONS ARE GENERIC. THE CONTRACTOR SHALL BE RESPONSIBLE FOR DETERMINING AND ENSURING PROPER TERMINATION.



FIBER OPTIC SPlice DETAILS
DMS-6 AND CCTV-6

DIVISION 03 BRUNSWICK/NEW HANOVER Near Wilmington

PLAN DATE: JANUARY 2018	REVIEWED BY: G. GREEN
PREPARED BY: L. NEAL	REVIEWED BY: P. MARAK

REVISIONS	INIT.	DATE

SCALE: NTS

DocuSigned by: Paul P. Marak 2/1/2018

CADD Filename: _____

