

PROJECT REFERENCE NO.	SHEET NO.
U-5828	EC-16
R/W SHEET NO.	5

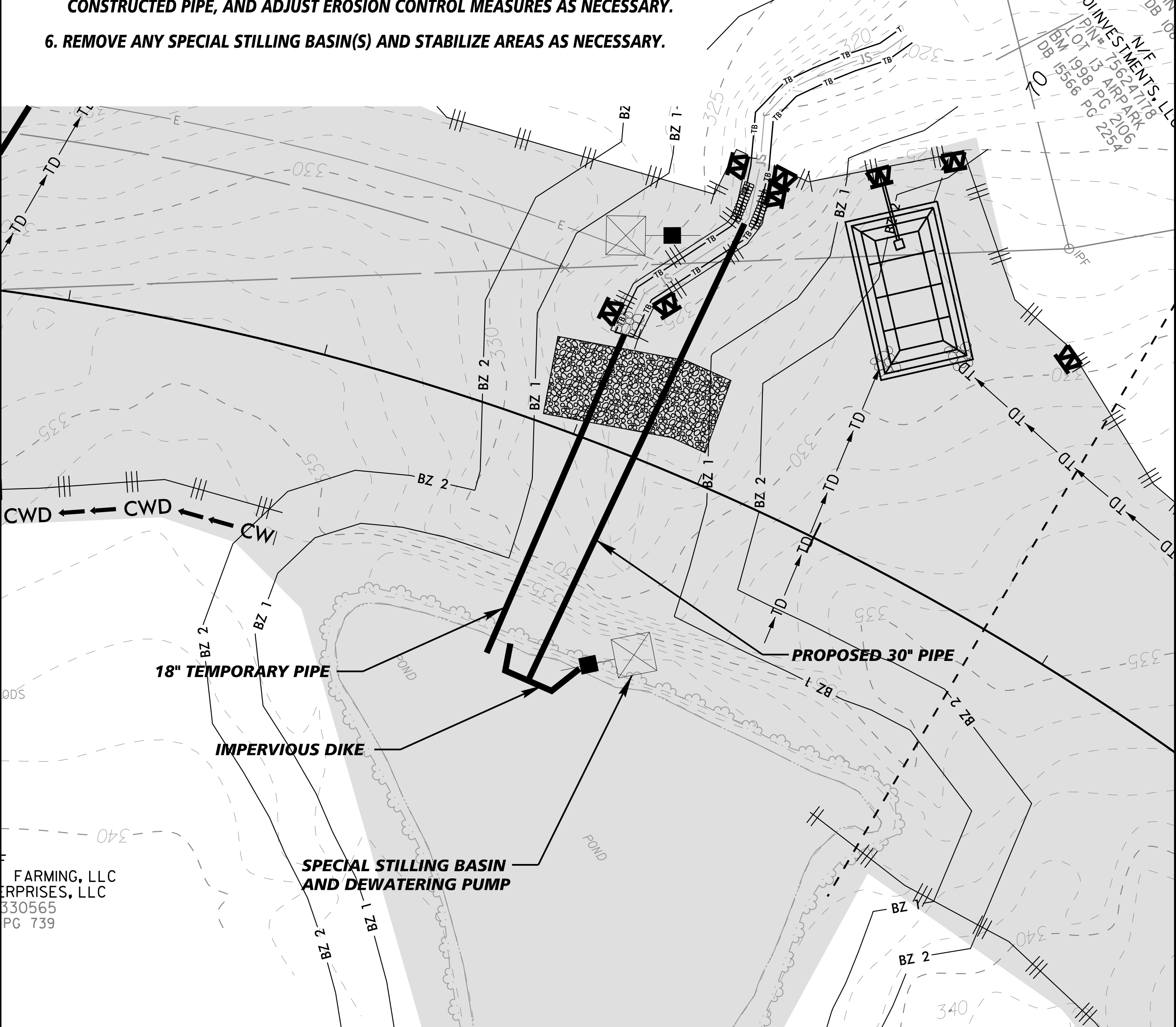
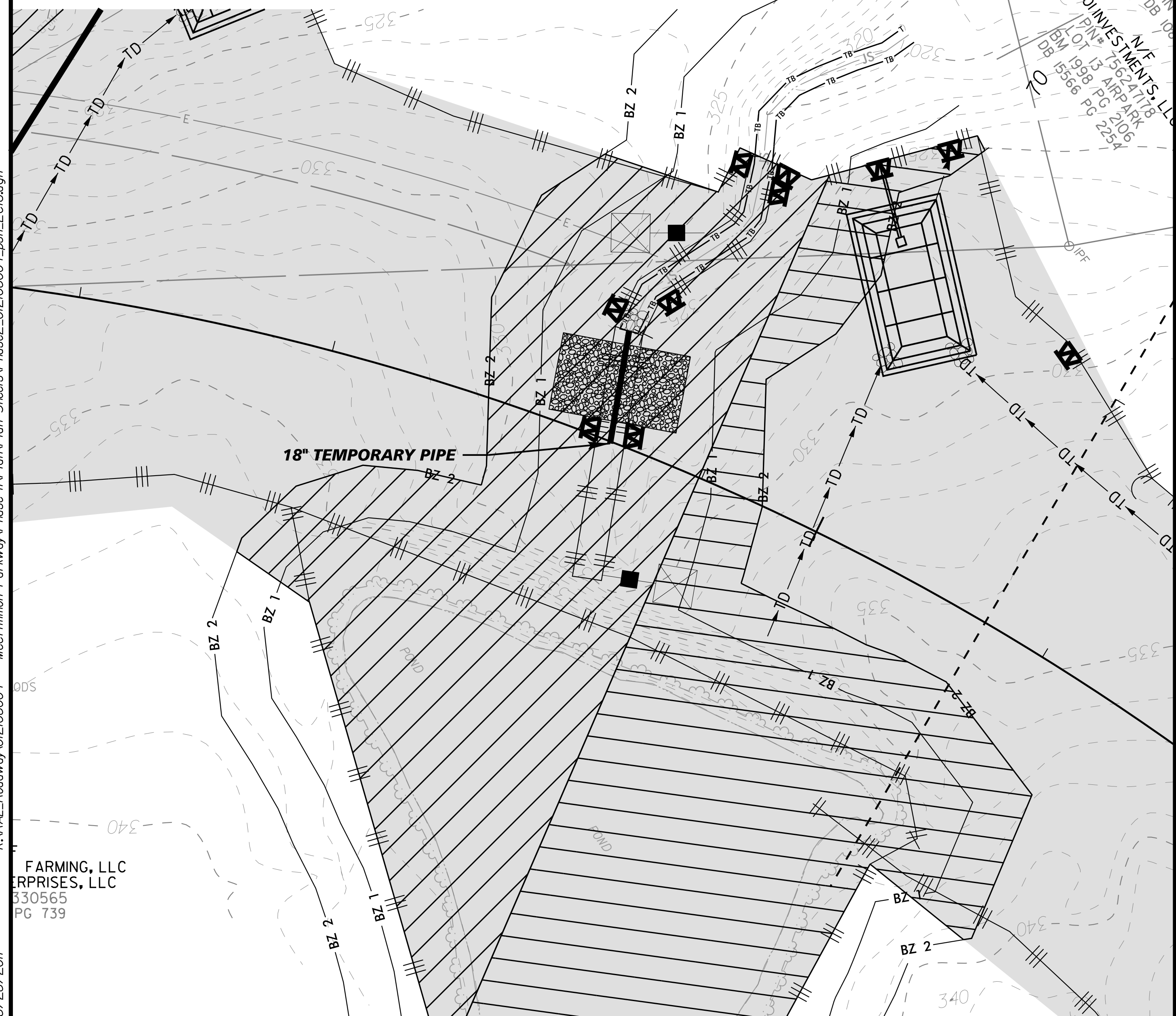
CULVERT CONSTRUCTION SEQUENCE -L- 72+92

CULVERT CONSTRUCTION SEQUENCE - STAGE 1

1. CONSTRUCT TEMPORARY SKIMMER SEDIMENT BASINS.
2. UTILIZE SPECIAL STILLING BASIN(S) DURING CULVERT CONSTRUCTION AS NEEDED.
2. PROTECT STREAM WITH SILT FENCE.
4. INSTALL 18" TEMPORARY PIPE AS NEEDED. DRAIN POND ACCORDING TO PROCESS DETAILED ON SHEETS EC-3 AND EC-4.
5. ENSURE STREAM IS KEPT CLEAN UNTIL INSTALLATION OF PROPOSED PIPE SYSTEMS.

CULVERT CONSTRUCTION SEQUENCE - STAGE 2

1. UTILIZE SPECIAL STILLING BASIN(S) DURING CULVERT CONSTRUCTION AS NEEDED.
2. UPON DRAINING OF POND AND ONCE POND BOTTOM HAS DRIED, ADJUST 18" TEMPORARY PIPE AND ASSOCIATED EROSION CONTROL MEASURES AS NECESSARY.
3. CONSTRUCT CLEAN WATER DIVERSION DITCH AND IMPERVIOUS DIKE, AND DIVERT FLOW THROUGH THE TEMPORARY PIPE.
4. CONSTRUCT PROPOSED 30" PIPE IN ACCORDANCE WITH THE PLANS.
5. REMOVE TEMPORARY PIPE, RESHAPE DIVERSION DITCHES TO NEWLY CONSTRUCTED PIPE, AND ADJUST EROSION CONTROL MEASURES AS NECESSARY.
6. REMOVE ANY SPECIAL STILLING BASIN(S) AND STABILIZE AREAS AS NECESSARY.



K:\RAL_Roadway\012108004 - McCrimmon Parkway\Phase 1\Plan\Plan Sheets\Phase2_012108004_psh_EC16.dgn
 8/28/2017
 FARMING, LLC
 PRPRISES, LLC
 530565
 PG 739