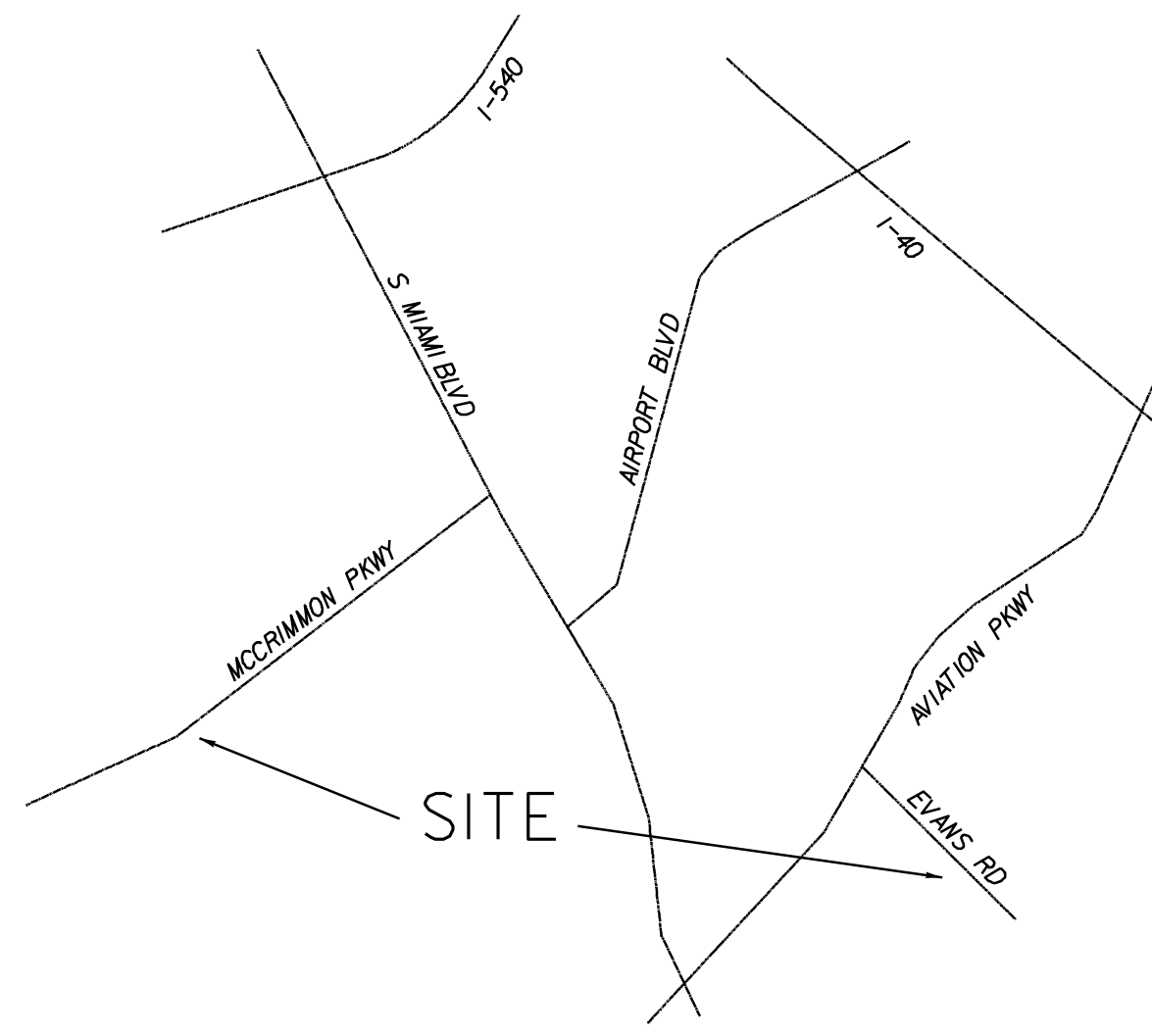
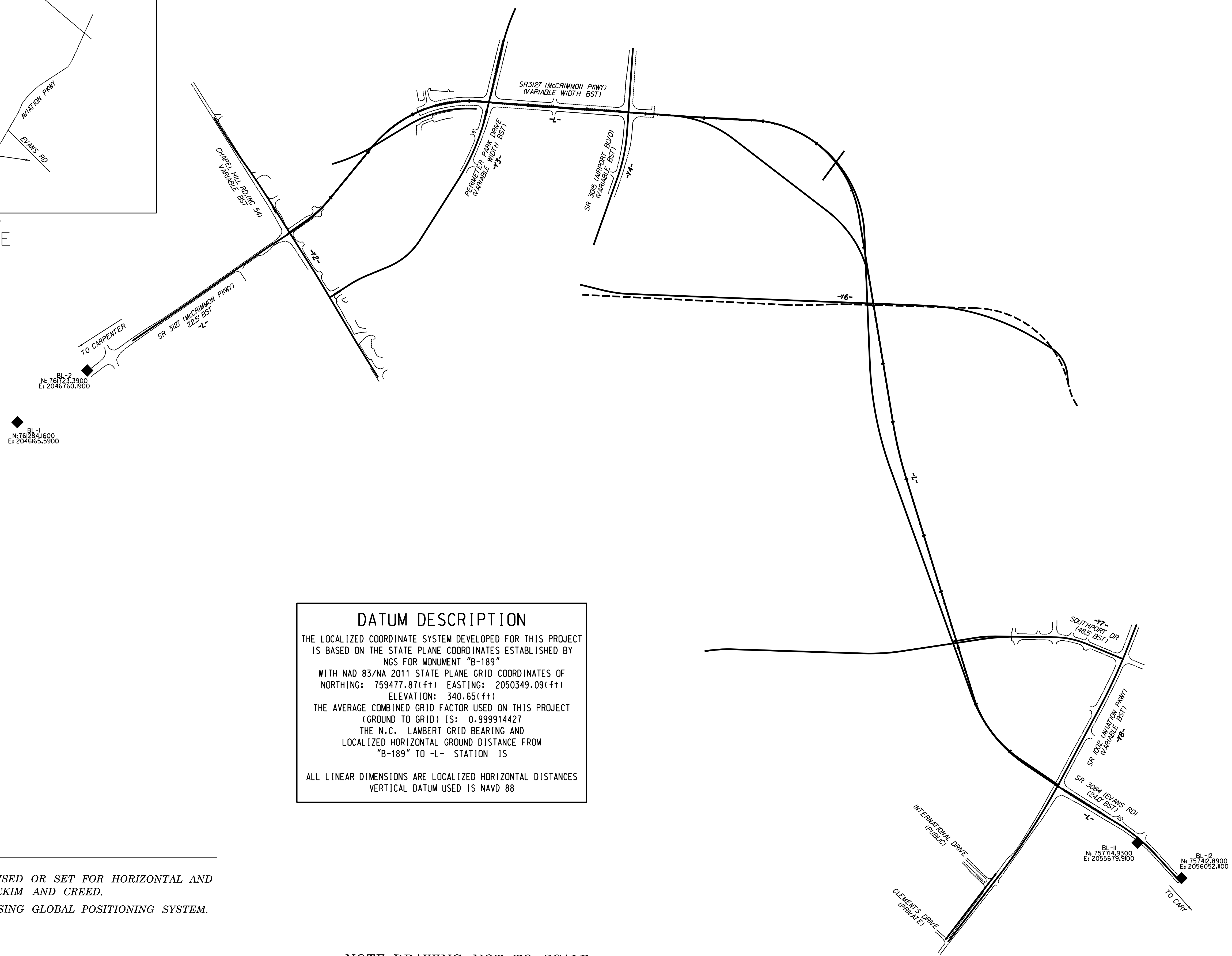


PROJECT REFERENCE NO.	SHEET NO.
MORRISVILLE-CARPENTER ROAD (SR 3014)	1C-1
Location and Surveys	
TIP #: U-5828	

SURVEY CONTROL SHEET



VICINITY MAP
NOT TO SCALE



DATUM DESCRIPTION

THE LOCALIZED COORDINATE SYSTEM DEVELOPED FOR THIS PROJECT IS BASED ON THE STATE PLANE COORDINATES ESTABLISHED BY NGS FOR MONUMENT "B-189"

WITH NAD 83/NA 2011 STATE PLANE GRID COORDINATES OF
 NORTHING: 759477.87(ft) EASTING: 2050349.09(ft)
 ELEVATION: 340.65(ft)

THE AVERAGE COMBINED GRID FACTOR USED ON THIS PROJECT (GROUND TO GRID) IS: 0.999914427

THE N.C. LAMBERT GRID BEARING AND LOCALIZED HORIZONTAL GROUND DISTANCE FROM "B-189" TO "L-" STATION IS

ALL LINEAR DIMENSIONS ARE LOCALIZED HORIZONTAL DISTANCES
 VERTICAL DATUM USED IS NAVD 88

NOTES:

- ◆ ◆ INDICATES CONTROL MONUMENTS USED OR SET FOR HORIZONTAL AND VERTICAL PROJECT CONTROL BY MCKIM AND CREED.
- PROJECT CONTROL ESTABLISHED USING GLOBAL POSITIONING SYSTEM.

NOTE: DRAWING NOT TO SCALE