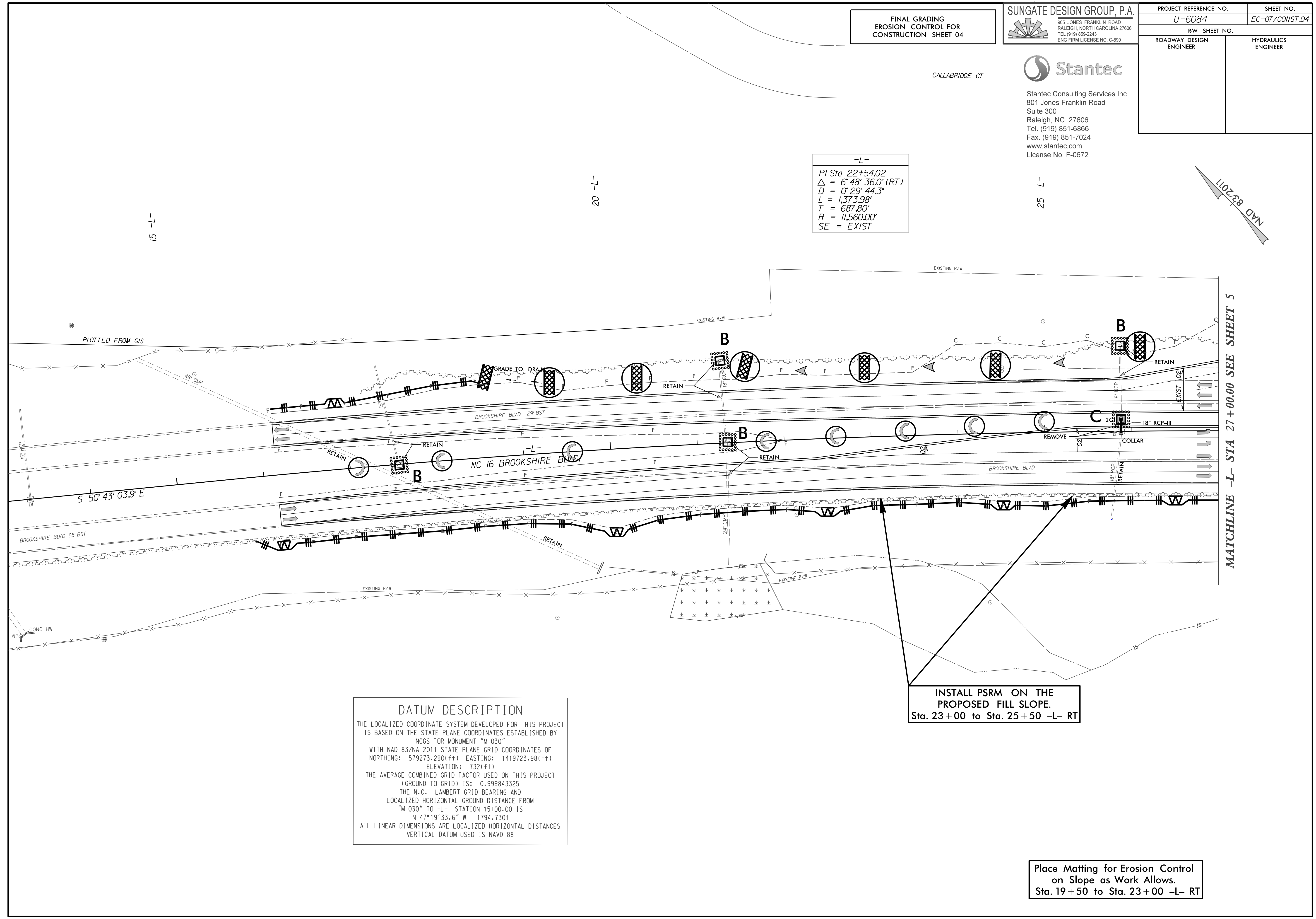
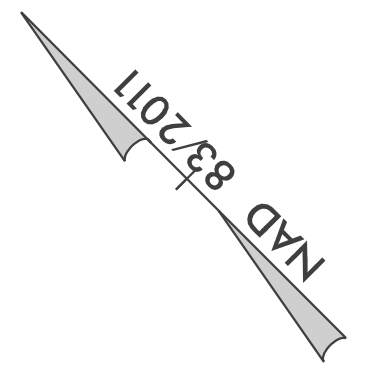


PROJECT REFERENCE NO. <i>U-6084</i>	SHEET NO. <i>EC-07/CONST.04</i>
R/W SHEET NO.	HYDRAULICS ENGINEER
ROADWAY DESIGN ENGINEER	

Stantec
Stantec Consulting Services Inc.
801 Jones Franklin Road
Suite 300
Raleigh, NC 27606
Tel. (919) 851-6866
Fax. (919) 851-7024
www.stantec.com
License No. F-0672

CALLABRIDGE CT

-L-
PI Sta 22+54.02
 $\Delta = 6' 48'' 36.0'' (RT)$
 $D = 0' 29'' 44.3''$
 $L = 1,373.98'$
 $T = 687.80'$
 $R = 11,560.00'$
SE = EXIST



DATUM DESCRIPTION
THE LOCALIZED COORDINATE SYSTEM DEVELOPED FOR THIS PROJECT IS BASED ON THE STATE PLANE COORDINATES ESTABLISHED BY NCGS FOR MONUMENT "M 030" WITH NAD 83/NA 2011 STATE PLANE GRID COORDINATES OF NORTHING: 579273.290(±ft) EASTING: 1419723.98(±ft) ELEVATION: 732(±ft) THE AVERAGE COMBINED GRID FACTOR USED ON THIS PROJECT (GROUND TO GRID) IS: 0.999843325 THE N.C. LAMBERT GRID BEARING AND LOCALIZED HORIZONTAL GROUND DISTANCE FROM "M 030" TO -L- STATION 15+00.00 IS N 47°19'33.6" W 1794.7301 ALL LINEAR DIMENSIONS ARE LOCALIZED HORIZONTAL DISTANCES VERTICAL DATUM USED IS NAVD 88

INSTALL PSRM ON THE PROPOSED FILL SLOPE.
Sta. 23+00 to Sta. 25+50 -L- RT

Place Matting for Erosion Control on Slope as Work Allows.
Sta. 19+50 to Sta. 23+00 -L- RT