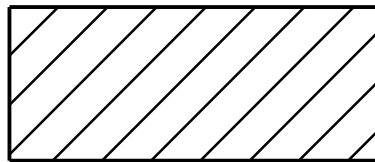


-SBX-

PI Sta 10+41.80 Δ = 23° 36' 44.6" (LT) D = 28' 38" 52.4" L = 82.42' T = 41.80' R = 200.00' SE = EXIST	PI Sta 12+75.22 Δ = 24° 42' 25.9" (RT) D = 28' 38" 52.4" L = 86.24' T = 43.80' R = 200.00' SE = EXIST
---	---



ENVIRONMENTALLY SENSITIVE AREA
SEE PROJECT SPECIAL PROVISIONS

NOTE:
PLACE TEMPORARY ROCK SEDIMENT DAMS TYPE - B
AND TEMPORARY ROCK SILT CHECKS TYPE - A AT
DRAINAGE OUTLETS.

-L-

PI Sta 22+54.02 Δ = 6° 48' 36.0" (RT) D = 0' 29' 44.3" L = 1,373.98' T = 687.80' R = 11,560.00' SE = EXIST
--

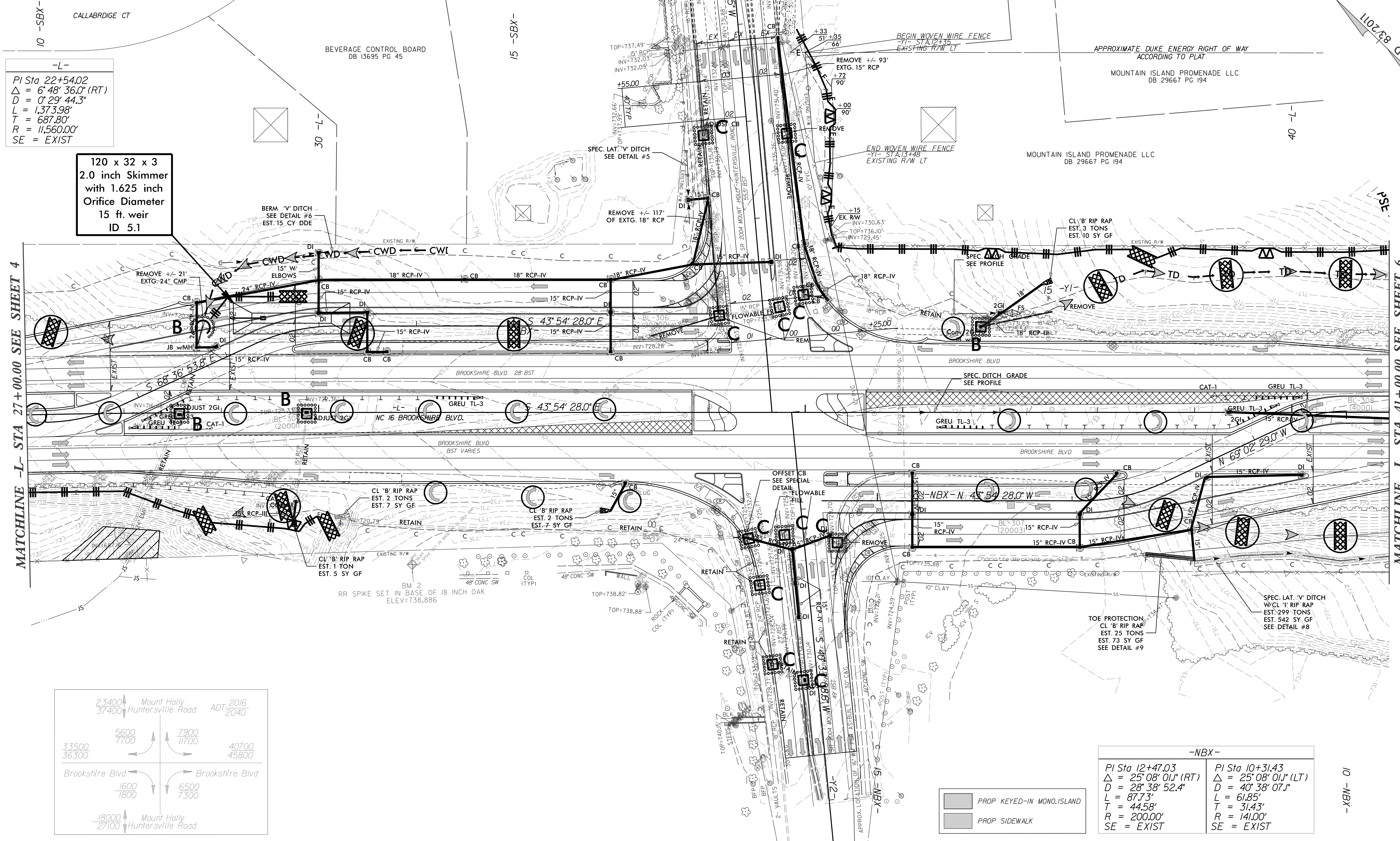
120 x 32 x 3
2.0 inch Skimmer
with 1.625 inch
Orifice Diameter
15 ft. weir
ID 5.1

CLEARING AND GRUBBING
EROSION CONTROL FOR
CONSTRUCTION SHEET 05

SUNGATE DESIGN GROUP, P.A.
905 JONES FRANKLIN ROAD
RALEIGH, NORTH CAROLINA 27606
TEL. (919) 858-2243
ENG. FIRM LICENSE NO. C-890

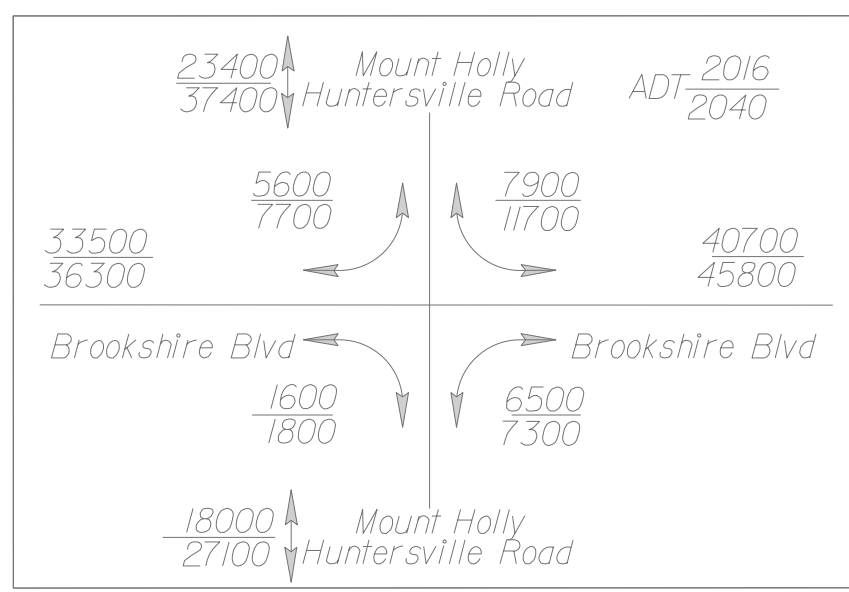
Stantec
Stantec Consulting Services Inc.
801 Jones Franklin Road
Suite 300
Raleigh, NC 27606
Tel. (919) 851-6866
Fax. (919) 851-7024
www.stantec.com
License No. F-0672

PROJECT REFERENCE NO. U-6084	SHEET NO. EC-05/CONST.05
ROADWAY DESIGN ENGINEER	HYDRAULICS ENGINEER



MATCHLINE -L- STA 27+00.00 SEE SHEET 4

MATCHLINE -L- STA 41+00.00 SEE SHEET 6



-NBX-

PI Sta 12+47.03 Δ = 25° 08' 01.1" (RT) D = 28' 38" 52.4" L = 87.73' T = 44.58' R = 200.00' SE = EXIST	PI Sta 10+31.43 Δ = 25° 08' 01.1" (LT) D = 40' 38" 07.1" L = 61.85' T = 31.43' R = 141.00' SE = EXIST
---	---

PROP KEYED-IN MONO ISLAND
PROP SIDEWALK

10 -NBX-

REVISIONS

8/17/99

12/21/2017
U6084_EC_dsn_pah_05_c9.dgn