

**This electronic collection of documents is provided  
for the convenience of the user  
and is Not a Certified Document –**

**The documents contained herein were originally issued  
and sealed by the individuals whose names and license  
numbers appear on each page, on the dates appearing  
with their signature on that page.**

**This file or an individual page  
shall not be considered a certified document.**



09/08/99

TIP PROJECT: U-2525C

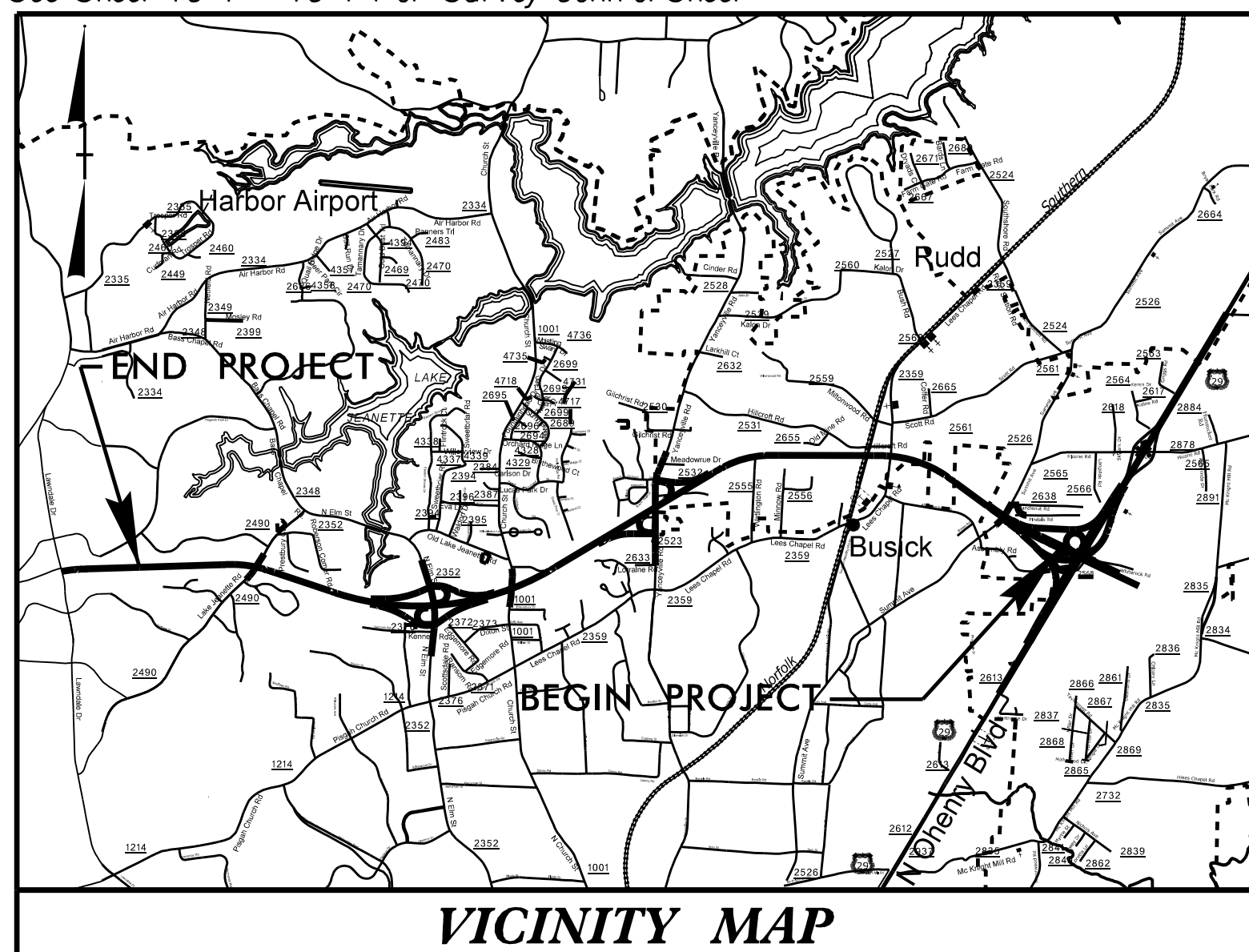
See Sheet 1A For Index of Sheets  
See Sheet 1B For Conventional Plan Sheet Symbols  
See Sheet 1C-1 - 1C-4 For Survey Control Sheet

# STATE OF NORTH CAROLINA DIVISION OF HIGHWAYS

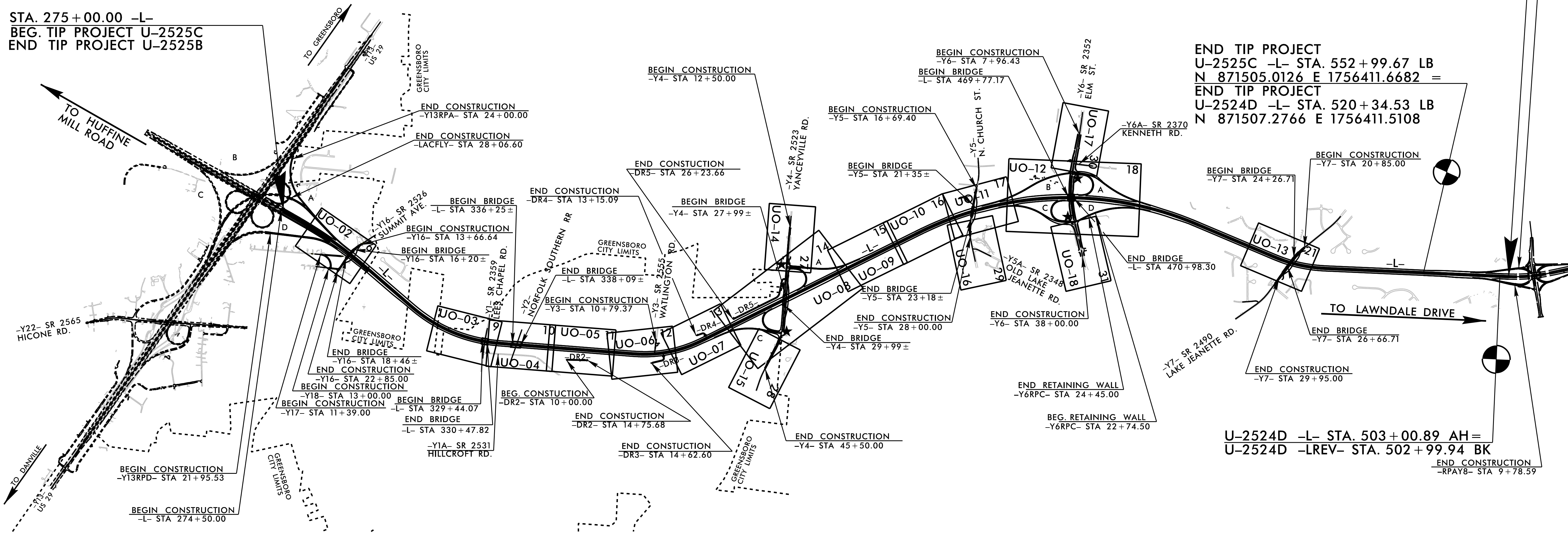
## UTILITIES BY OTHERS PLANS GUILFORD COUNTY

LOCATION: GREENSBORO LOOP FROM US 29 NORTH OF  
GREENSBORO TO EAST OF LAWNDALE DRIVE

TYPE OF WORK: DISTRIBUTION POWER AND TELECOMMUNICATIONS



STA. 275+00.00 -L-  
BEG. TIP PROJECT U-2525C  
END TIP PROJECT U-2525B



NOTE:  
ALL UTILITY WORK SHOWN ON THIS SHEET IS DONE BY OTHERS.  
NO PAYMENT WILL BE MADE TO THE CONTRACTOR FOR UTILITY WORK SHOWN ON THIS SHEET.

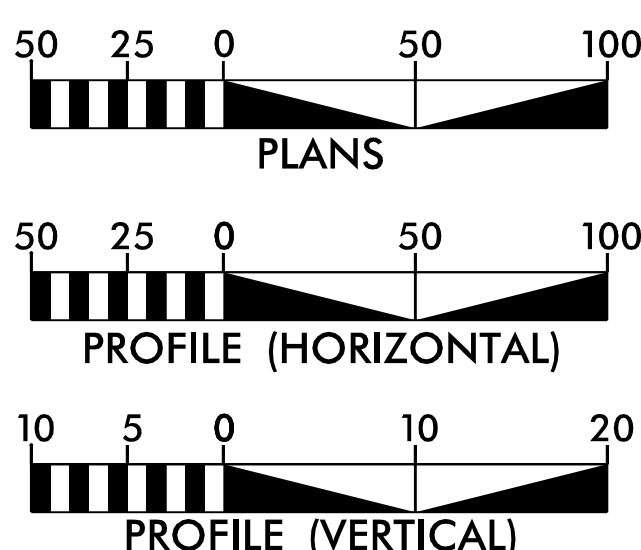
END CONSTRUCTION U-2525C  
(U-2524D) -LREV- STA. 501+00.00

END TIP PROJECT  
U-2525C -L- STA. 552+99.67 LB  
N 871505.0126 E 1756411.6682 =  
END TIP PROJECT  
U-2524D -L- STA. 520+34.53 LB  
N 871507.2766 E 1756411.5108

U-2524D -L- STA. 503+00.89 AH=  
U-2524D -LREV- STA. 502+99.94 BK

CONTRACT:

### GRAPHIC SCALES



### INDEX OF SHEETS

SHEET NO.:	DESCRIPTION:
UO-1	TITLE SHEET
UO-02 - UO-18	UBO PLAN SHEETS

### UTILITY OWNERS WITH CONFLICTS

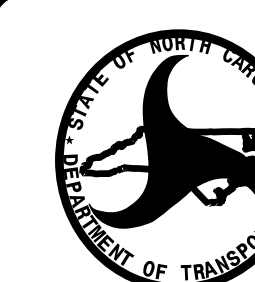
- (A) DUKE ENERGY - POWER (DISTRIBUTION)
- (B) DUKE ENERGY - POWER (TRANSMISSION)
- (C) PIEDMONT NATURAL GAS - (DISTRIBUTION)
- (D) AT&T - COMMUNICATIONS
- (E) CHARTER - COMMUNICATIONS

PREPARED IN THE OFFICE OF:

## SO-DEEP | SAM NC

SO-DEEP | SAM NC, Inc.  
A SAM COMPANY  
2800-154 Sumner Boulevard, Raleigh, NC 27616 Tel 919-878-7466

Keith Garry UTILITY PROJECT MANAGER  
Freddie Bunn UTILITY COORDINATOR



DIVISION OF HIGHWAYS  
UTILITIES UNIT  
1555 MAIL SERVICES CENTER  
RALEIGH NC 27699-1555  
PHONE (919) 707-6690  
FAX (919) 250-4151

Ali Kouchecki, P.E. UTILITIES REGIONAL ENGINEER  
Bernie Bumgarner UTILITIES ENGINEER  
Amy Dupree UTILITIES AREA COORDINATOR  
Greg Sealy UTILITIES COORDINATOR

\$\$\$SYTIME\$\$\$\$\$  
\$\$\$DGN\$\$\$\$\$  
\$\$\$USRNAME\$\$\$\$\$



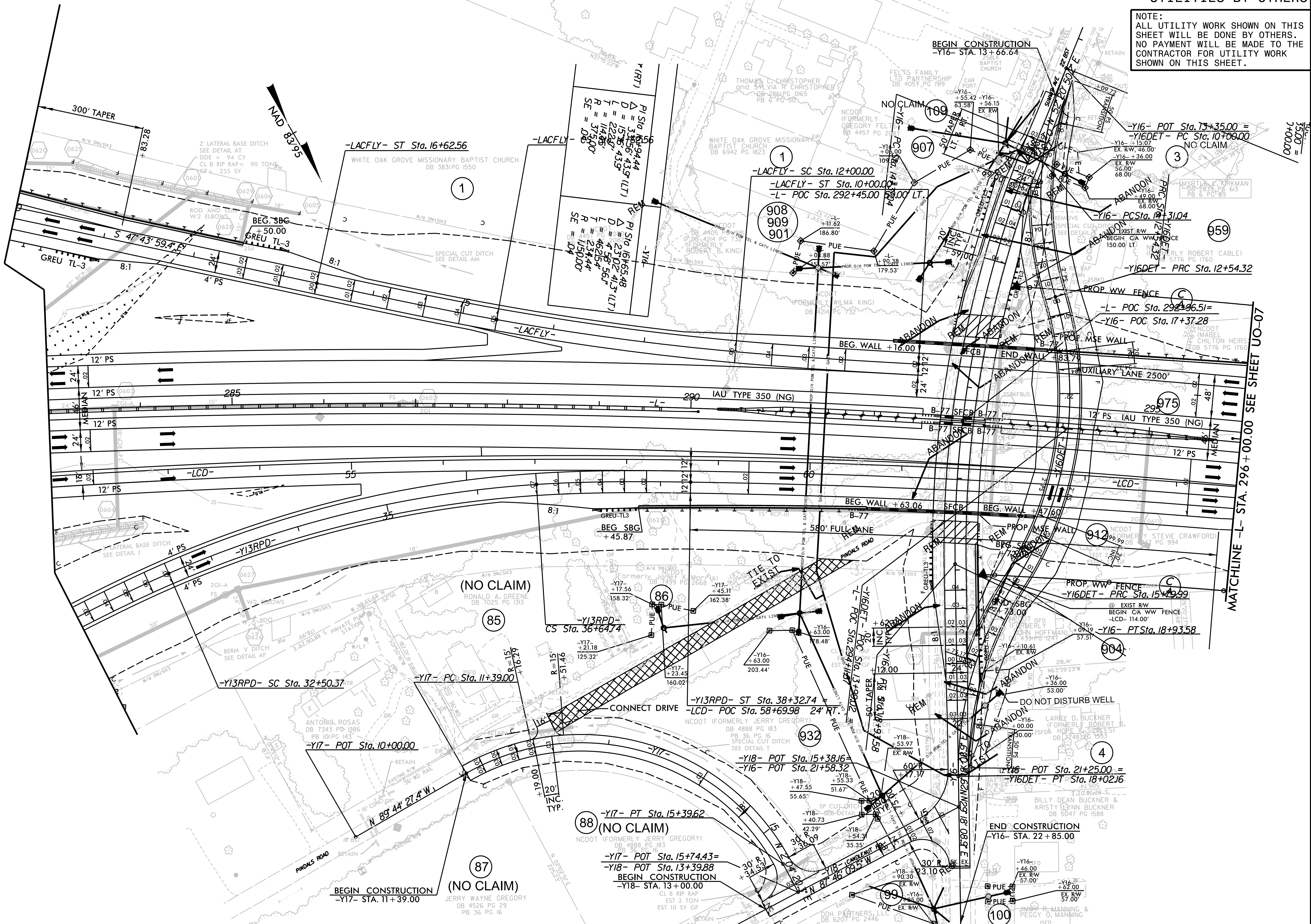
**UTILITIES BY OTHERS**

**NOTE:**  
 ALL UTILITY WORK SHOWN ON THIS SHEET WILL BE DONE BY OTHERS. NO PAYMENT WILL BE MADE TO THE CONTRACTOR FOR UTILITY WORK SHOWN ON THIS SHEET.

8.17.79

REVISIONS

MATCHLINE -L- STA. 296 + 00.00 SEE SHEET UO-07



1. 11/15/01  
 2. 11/15/01  
 3. 11/15/01  
 4. 11/15/01  
 5. 11/15/01  
 6. 11/15/01  
 7. 11/15/01  
 8. 11/15/01  
 9. 11/15/01  
 10. 11/15/01  
 11. 11/15/01  
 12. 11/15/01  
 13. 11/15/01  
 14. 11/15/01  
 15. 11/15/01  
 16. 11/15/01  
 17. 11/15/01  
 18. 11/15/01  
 19. 11/15/01  
 20. 11/15/01  
 21. 11/15/01  
 22. 11/15/01  
 23. 11/15/01  
 24. 11/15/01  
 25. 11/15/01  
 26. 11/15/01  
 27. 11/15/01  
 28. 11/15/01  
 29. 11/15/01  
 30. 11/15/01  
 31. 11/15/01  
 32. 11/15/01  
 33. 11/15/01  
 34. 11/15/01  
 35. 11/15/01  
 36. 11/15/01  
 37. 11/15/01  
 38. 11/15/01  
 39. 11/15/01  
 40. 11/15/01  
 41. 11/15/01  
 42. 11/15/01  
 43. 11/15/01  
 44. 11/15/01  
 45. 11/15/01  
 46. 11/15/01  
 47. 11/15/01  
 48. 11/15/01  
 49. 11/15/01  
 50. 11/15/01  
 51. 11/15/01  
 52. 11/15/01  
 53. 11/15/01  
 54. 11/15/01  
 55. 11/15/01  
 56. 11/15/01  
 57. 11/15/01  
 58. 11/15/01  
 59. 11/15/01  
 60. 11/15/01  
 61. 11/15/01  
 62. 11/15/01  
 63. 11/15/01  
 64. 11/15/01  
 65. 11/15/01  
 66. 11/15/01  
 67. 11/15/01  
 68. 11/15/01  
 69. 11/15/01  
 70. 11/15/01  
 71. 11/15/01  
 72. 11/15/01  
 73. 11/15/01  
 74. 11/15/01  
 75. 11/15/01  
 76. 11/15/01  
 77. 11/15/01  
 78. 11/15/01  
 79. 11/15/01  
 80. 11/15/01  
 81. 11/15/01  
 82. 11/15/01  
 83. 11/15/01  
 84. 11/15/01  
 85. 11/15/01  
 86. 11/15/01  
 87. 11/15/01  
 88. 11/15/01  
 89. 11/15/01  
 90. 11/15/01  
 91. 11/15/01  
 92. 11/15/01  
 93. 11/15/01  
 94. 11/15/01  
 95. 11/15/01  
 96. 11/15/01  
 97. 11/15/01  
 98. 11/15/01  
 99. 11/15/01  
 100. 11/15/01









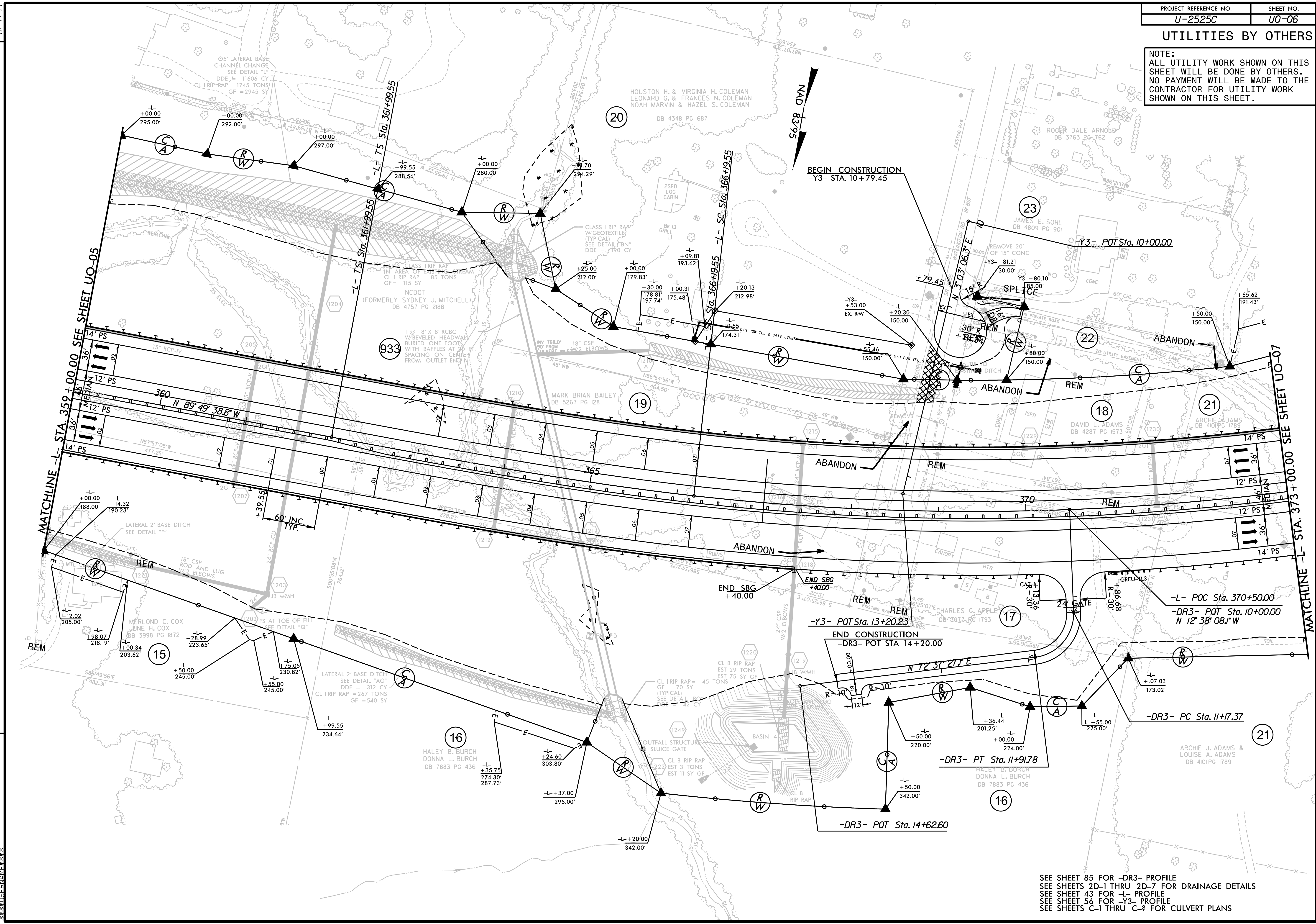






**UTILITIES BY OTHERS**

NOTE:  
 ALL UTILITY WORK SHOWN ON THIS SHEET WILL BE DONE BY OTHERS. NO PAYMENT WILL BE MADE TO THE CONTRACTOR FOR UTILITY WORK SHOWN ON THIS SHEET.



REVISIONS

MATCHLINE -L- STA. 359 + 00.00 SEE SHEET U0-05

MATCHLINE -L- STA. 373 + 00.00 SEE SHEET U0-07

SEE SHEET 85 FOR -DR3- PROFILE  
 SEE SHEETS 2D-1 THRU 2D-7 FOR DRAINAGE DETAILS  
 SEE SHEET 43 FOR -L- PROFILE  
 SEE SHEET 56 FOR -Y3- PROFILE  
 SEE SHEETS C-1 THRU C-? FOR CULVERT PLANS

8.17/99  
 1  
 2  
 3  
 4  
 5  
 6  
 7  
 8  
 9  
 10  
 11  
 12  
 13  
 14  
 15  
 16  
 17  
 18  
 19  
 20  
 21  
 22  
 23  
 24  
 25  
 26  
 27  
 28  
 29  
 30  
 31  
 32  
 33  
 34  
 35  
 36  
 37  
 38  
 39  
 40  
 41  
 42  
 43  
 44  
 45  
 46  
 47  
 48  
 49  
 50  
 51  
 52  
 53  
 54  
 55  
 56  
 57  
 58  
 59  
 60  
 61  
 62  
 63  
 64  
 65  
 66  
 67  
 68  
 69  
 70  
 71  
 72  
 73  
 74  
 75  
 76  
 77  
 78  
 79  
 80  
 81  
 82  
 83  
 84  
 85  
 86  
 87  
 88  
 89  
 90  
 91  
 92  
 93  
 94  
 95  
 96  
 97  
 98  
 99  
 100

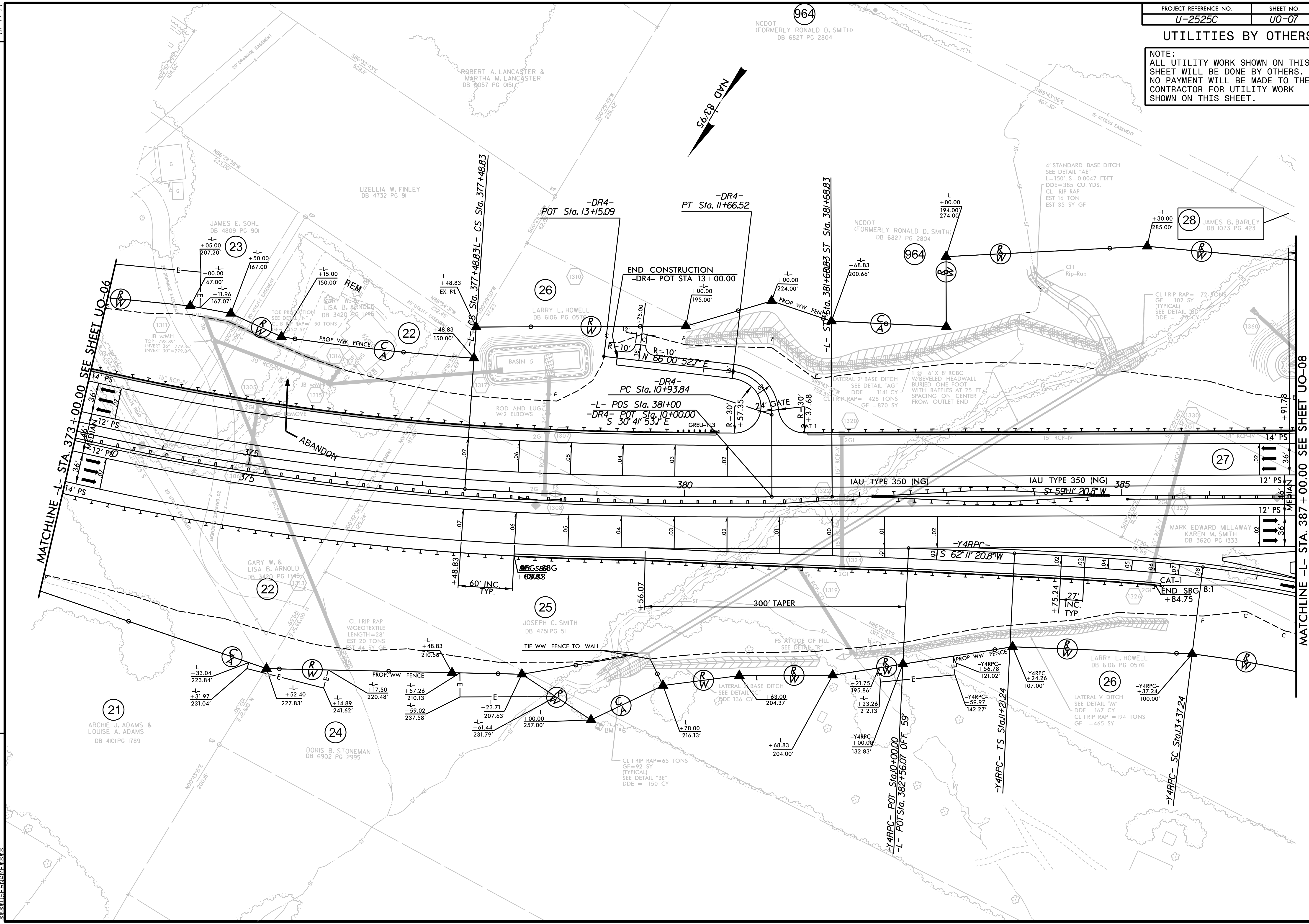


**UTILITIES BY OTHERS**

**NOTE:**  
 ALL UTILITY WORK SHOWN ON THIS SHEET WILL BE DONE BY OTHERS. NO PAYMENT WILL BE MADE TO THE CONTRACTOR FOR UTILITY WORK SHOWN ON THIS SHEET.

8/17/99

REVISIONS



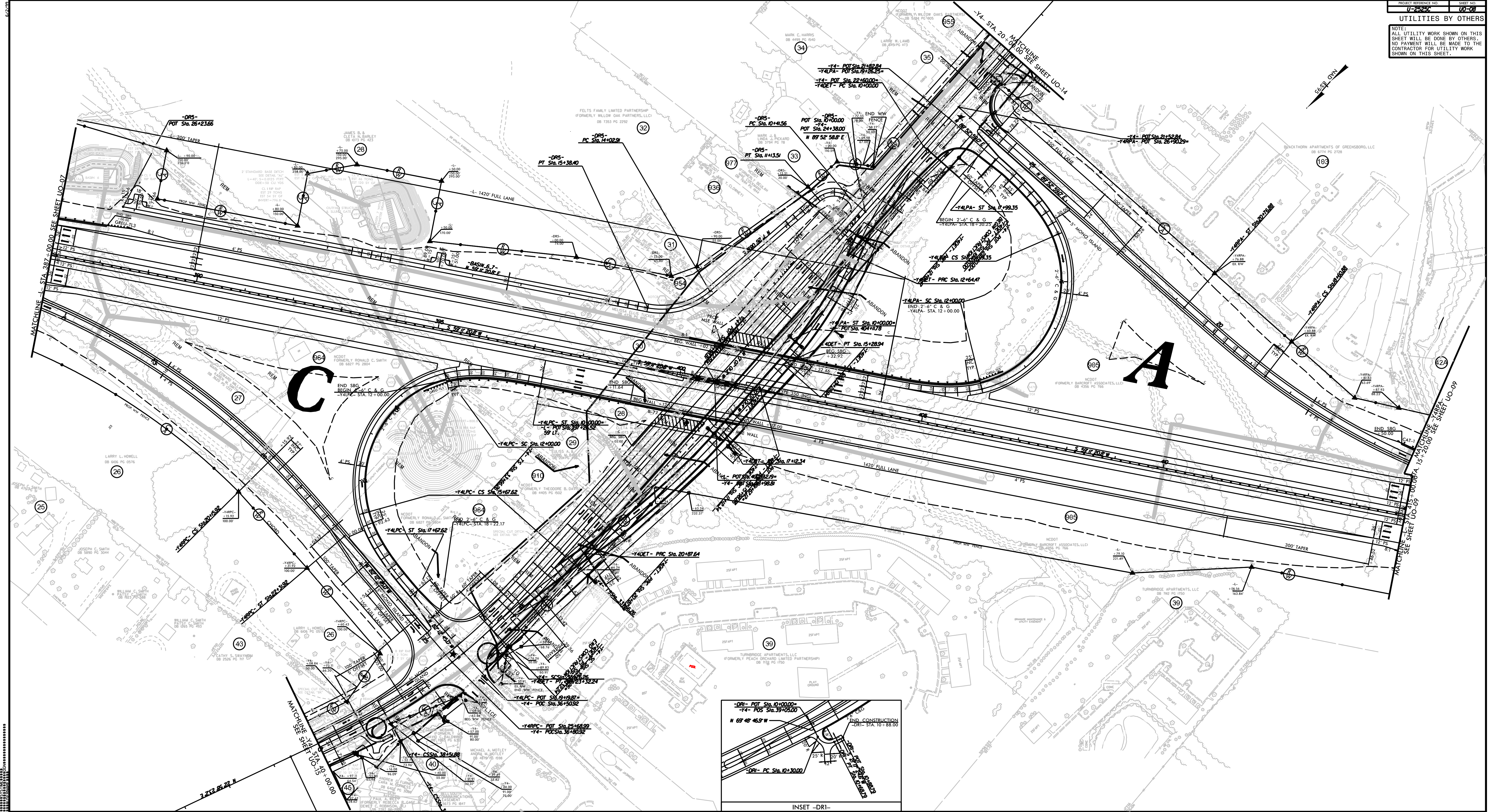
CONTRACTOR'S USE ONLY

MATCHLINE -L- STA. 387+00.00 SEE SHEET UO-08

MATCHLINE -L- STA. 373+00.00 SEE SHEET UO-06

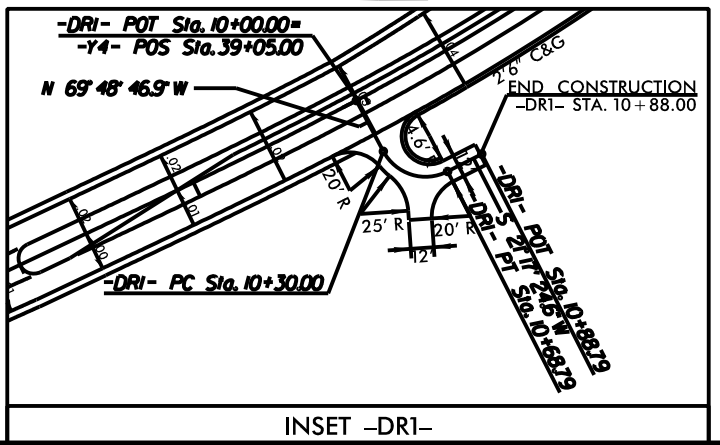


NOTE:  
 ALL UTILITY WORK SHOWN ON THIS SHEET WILL BE DONE BY OTHERS. NO PAYMENT WILL BE MADE TO THE CONTRACTOR FOR UTILITY WORK SHOWN ON THIS SHEET.



**C**

**A**





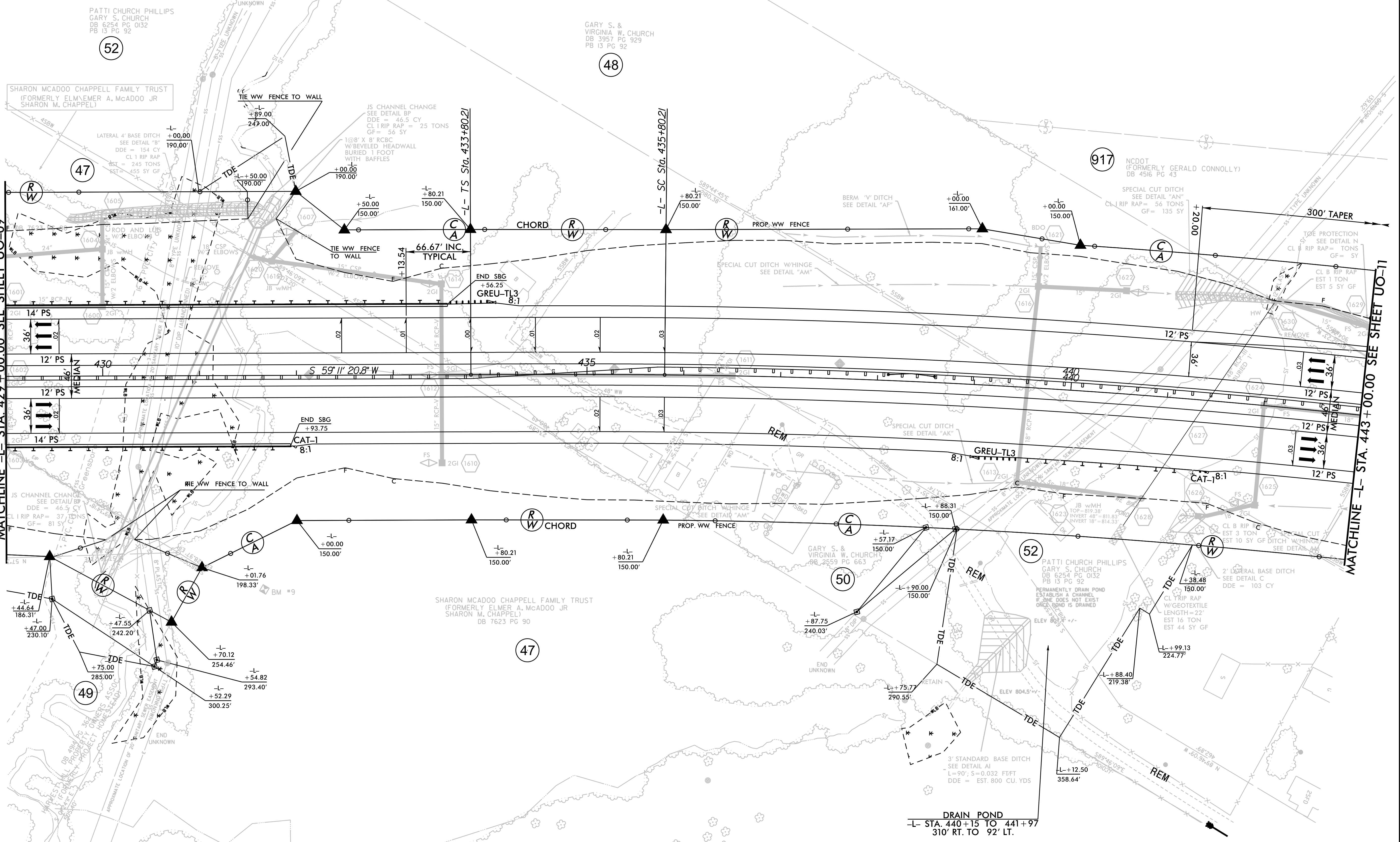
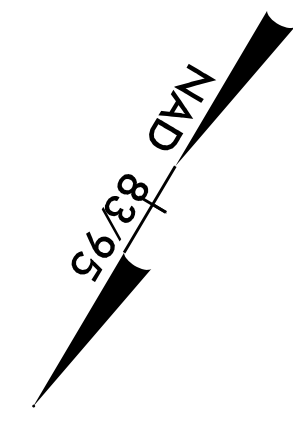




**UTILITIES BY OTHERS**

**NOTE:**  
ALL UTILITY WORK SHOWN ON THIS SHEET WILL BE DONE BY OTHERS. NO PAYMENT WILL BE MADE TO THE CONTRACTOR FOR UTILITY WORK SHOWN ON THIS SHEET.

8/17/99



MATCHLINE -L- STA. 429 + 00.00 SEE SHEET U0-09

MATCHLINE -L- STA. 443 + 00.00 SEE SHEET U0-11

REVISIONS

1. ALL UTILITIES TO BE LOCATED AND DEPTH VERIFIED BY OTHERS.  
 2. ALL UTILITIES TO BE SHOWN ON THIS SHEET.  
 3. ALL UTILITIES TO BE SHOWN ON THIS SHEET.  
 4. ALL UTILITIES TO BE SHOWN ON THIS SHEET.  
 5. ALL UTILITIES TO BE SHOWN ON THIS SHEET.  
 6. ALL UTILITIES TO BE SHOWN ON THIS SHEET.  
 7. ALL UTILITIES TO BE SHOWN ON THIS SHEET.  
 8. ALL UTILITIES TO BE SHOWN ON THIS SHEET.  
 9. ALL UTILITIES TO BE SHOWN ON THIS SHEET.  
 10. ALL UTILITIES TO BE SHOWN ON THIS SHEET.

**DRAIN POND**  
-L- STA. 440+15 TO 441+97  
310' RT. TO 92' LT.

SEE SHEETS C-1 THRU C-2 FOR CULVERT PLANS

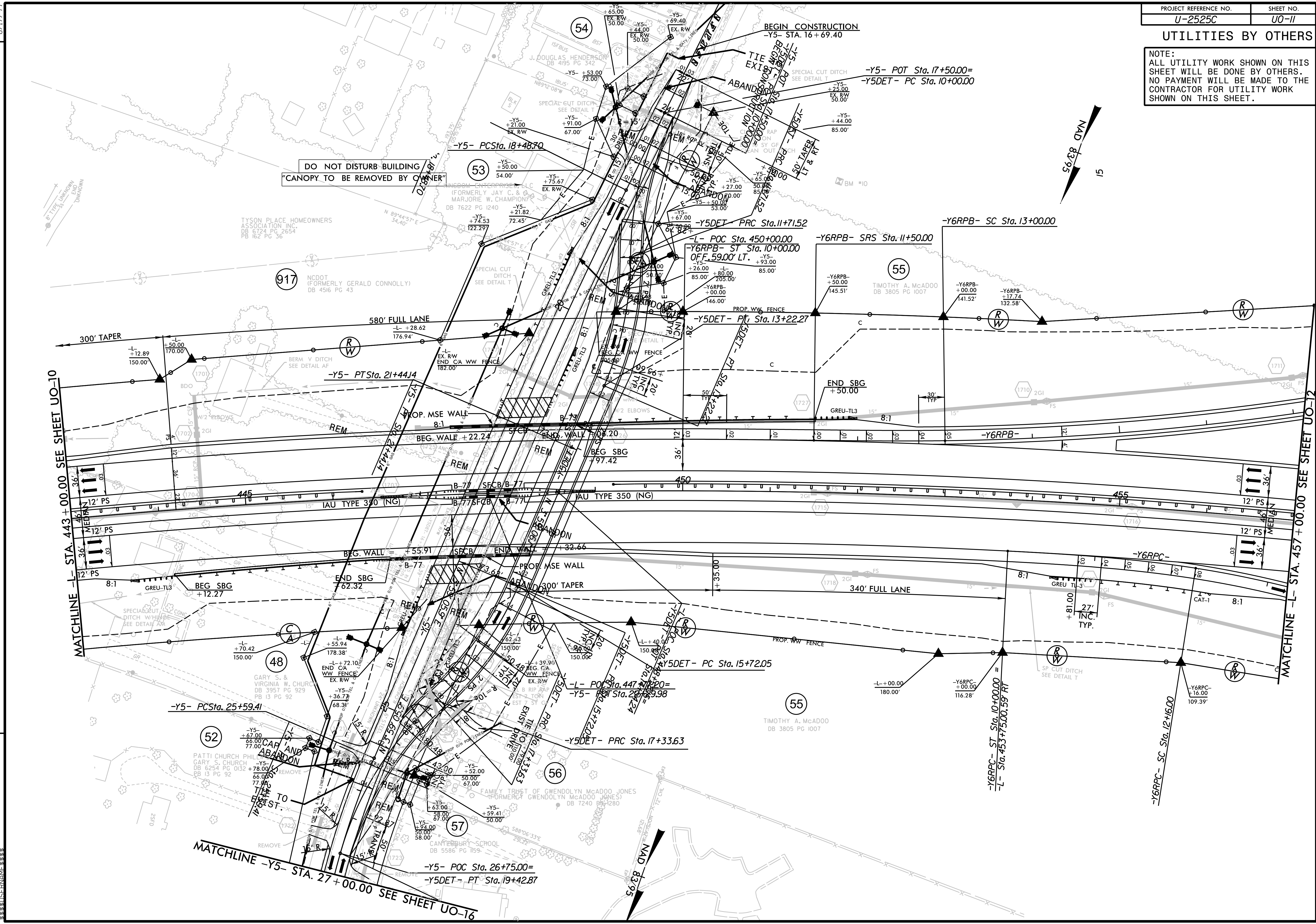


### UTILITIES BY OTHERS

NOTE:  
ALL UTILITY WORK SHOWN ON THIS SHEET WILL BE DONE BY OTHERS. NO PAYMENT WILL BE MADE TO THE CONTRACTOR FOR UTILITY WORK SHOWN ON THIS SHEET.

8/17/99

REVISIONS



MATCHLINE - STA. 443+00.00 SEE SHEET UO-10

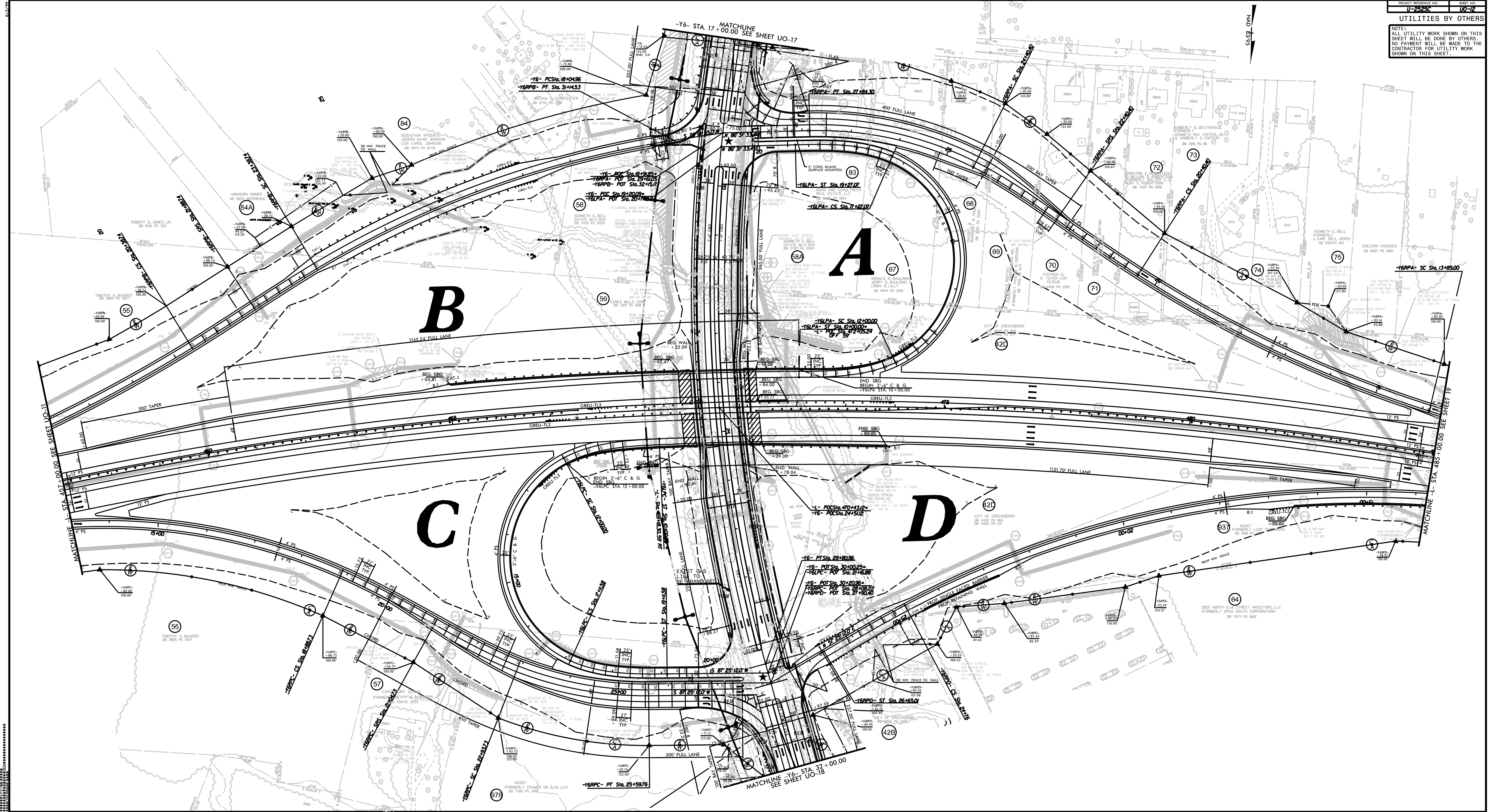
MATCHLINE - STA. 457+00.00 SEE SHEET UO-12

MATCHLINE -Y5- STA. 27+00.00 SEE SHEET UO-16

REVISIONS



NOTE:  
ALL UTILITY WORK SHOWN ON THIS SHEET WILL BE DONE BY OTHERS. NO PAYMENT WILL BE MADE TO THE CONTRACTOR FOR UTILITY WORK SHOWN ON THIS SHEET.



MATCHLINE - STA. 157+00.00 SEE SHEET 00-11

-Y6- STA. 17+00.00 SEE SHEET 00-17

MATCHLINE - STA. 185+00.00 SEE SHEET 19

MATCHLINE - Y6- STA. 32+00.00 SEE SHEET 00-18

**B**

**A**

**C**

**D**

-Y6PC- PT Sta. 25+592.8

-Y6- PT Sta. 30+00.25  
-Y6PC- PT Sta. 27+63.88  
-Y6- PT Sta. 30+20.56  
-Y6PC- PT Sta. 29+08.22

-Y6- PCS Sta. 470+432  
-Y6- PCS Sta. 24+512

-Y6PA- SC Sta. 10+00.00  
-Y6PA- ST Sta. 10+00.00  
-Y6PA- CS Sta. 17+50.00  
-Y6PA- ST Sta. 19+27.17  
-Y6PA- CS Sta. 17+50.00

-Y6- PCS Sta. 18+04.96  
-Y6PC- PT Sta. 3+445.3

-Y6- PT Sta. 18+19.15  
-Y6PC- PT Sta. 25+15.11  
-Y6- PT Sta. 18+20.02  
-Y6PC- PT Sta. 20+15.11

-Y6PA- SC Sta. 13+45.00

-Y6PA- CS Sta. 20+24.90

-Y6PA- CS Sta. 20+24.90

-Y6PC- SC Sta. 25+28.97

-Y6PC- SC Sta. 25+28.97

-Y6PC- SC Sta. 25+28.97

-Y6PC- SC Sta. 25+28.97

-Y6PC- SC Sta. 25+28.97

-Y6PC- SC Sta. 25+28.97

-Y6PC- SC Sta. 25+28.97

-Y6PC- SC Sta. 25+28.97

-Y6PC- SC Sta. 25+28.97

-Y6PC- SC Sta. 25+28.97

-Y6PC- SC Sta. 25+28.97

-Y6PC- SC Sta. 25+28.97

-Y6PC- SC Sta. 25+28.97

-Y6PC- SC Sta. 25+28.97

-Y6PC- SC Sta. 25+28.97

-Y6PC- SC Sta. 25+28.97

-Y6PC- SC Sta. 25+28.97

-Y6PC- SC Sta. 25+28.97

-Y6PC- SC Sta. 25+28.97

-Y6PC- SC Sta. 25+28.97

-Y6PC- SC Sta. 25+28.97

-Y6PC- SC Sta. 25+28.97

-Y6PC- SC Sta. 25+28.97

-Y6PC- SC Sta. 25+28.97

-Y6PC- SC Sta. 25+28.97







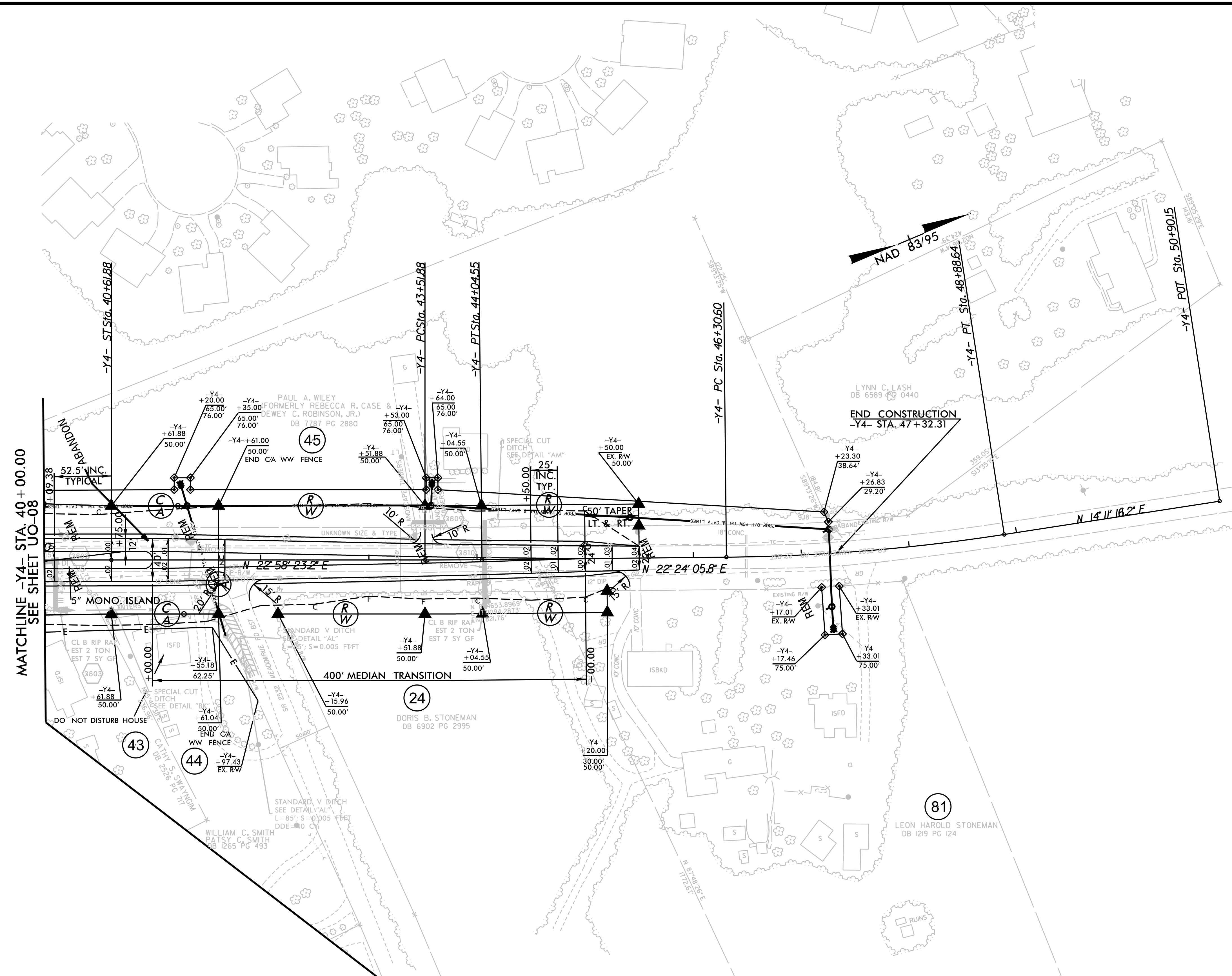




**UTILITIES BY OTHERS**

NOTE:  
 ALL UTILITY WORK SHOWN ON THIS SHEET WILL BE DONE BY OTHERS. NO PAYMENT WILL BE MADE TO THE CONTRACTOR FOR UTILITY WORK SHOWN ON THIS SHEET.

REVISIONS  
 11/01/16 RW REVISION: ADJUSTED PUE ON PARCELS 45 AND 81 - (WEI/ree)  
 07/03/17 RW REVISION: ADJUSTED PROPERTY LINE ON PARCEL 45; ADJUSTED PROPERTY LINE AND ADDED PROPOSED RW ON PARCEL 81; ADJUSTING PROPERTY LINE AND PROPOSED RW ON PARCEL 24. - (WEI/ree)



MATCHLINE -Y4- STA. 40+00.00  
 SEE SHEET UO-08

-Y4-		
PIs Sta 39+219.3	PI Sta 43+78.21	PI Sta 47+59.84
Gs = 4° 59' 33.3"	Δ = 0° 34' 17.4" (LT)	Δ = 8° 12' 49.6" (LT)
Ls = 210.00'	D = 1° 05' 06.5"	D = 3° 10' 59.2"
LT = 140.06'	L = 52.67'	L = 258.04'
ST = 70.05'	T = 26.33'	T = 129.24'
	R = 5,280.00'	R = 1,800.00'
	SE = NC	
	DS = 50 MPH	

SEE SHEET 2D-1 FOR DRAINAGE DETAILS  
 SEE SHEET 50 FOR -Y4- PROFILE











