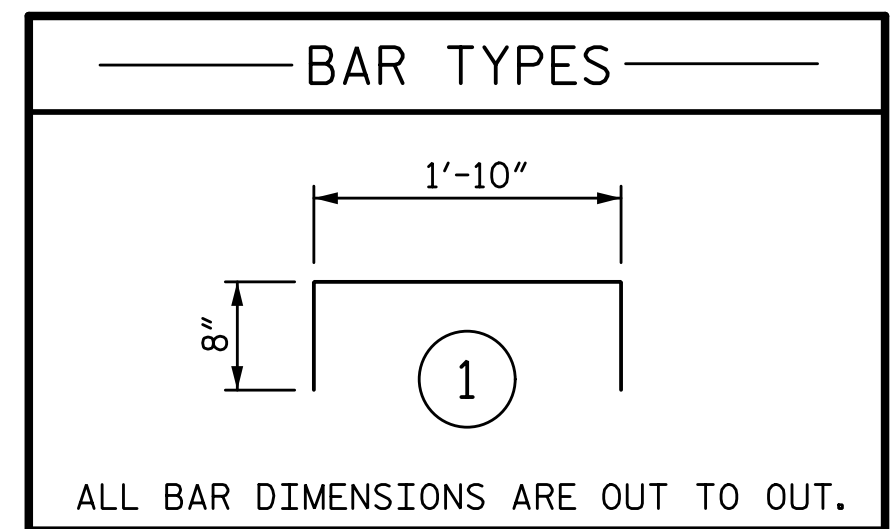
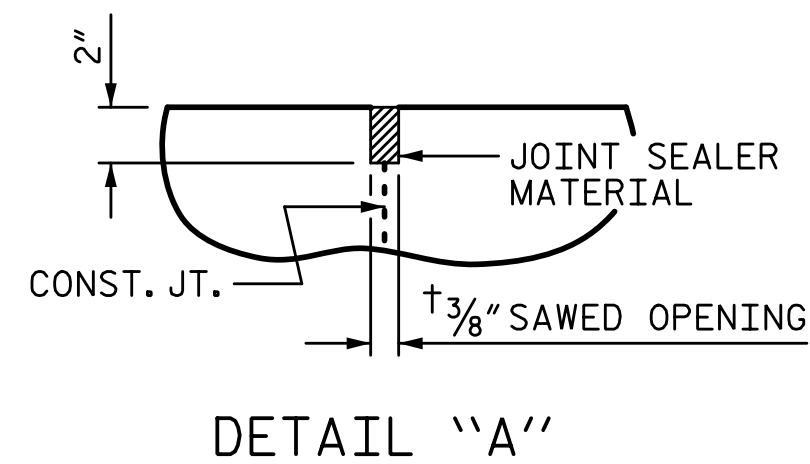


12/20/2017 3:18:26 PM G:\Projects\2016\U-2525C (Greensboro Eastern Loop)\Structures\Site 9\Drawings\Final\U2525C_SMU_AS_SITE9.dgn



SPLICE CHART

BAR SIZE	EPOXY COATED	UNCOATED
#4	2'-0"	1'-9"
#5	2'-6"	2'-2"
#6	3'-10"	2'-7"

NOTES:

APPROACH SLAB SHALL NOT BE CONSTRUCTED PRIOR TO COMPLETION OF THE BRIDGE DECK.

FOR BRIDGE APPROACH FILL INCLUDING GEOTEXTILE, 6" Ø DRAINAGE PIPE, AND SELECT MATERIAL, SEE ROADWAY PLANS.

GEOTEXTILE SHALL BE TYPE 1 IN ACCORDANCE WITH THE STANDARD SPECIFICATIONS SECTION 1056.

SELECT MATERIAL BACKFILL (CLASS V OR CLASS VI) SHALL BE IN ACCORDANCE WITH STANDARD SPECIFICATIONS SECTION 1016.

SELECT MATERIAL BACKFILL IS TO BE CONTINUOUS ALONG FILL FACE OF BACKWALL FROM OUTSIDE EDGE TO OUTSIDE EDGE OF APPROACH SLAB.

FOR THE 6" Ø DRAINAGE PIPE OUTLET(S), SEE ROADWAY STANDARD DRAWINGS.

AREA BETWEEN THE WINGWALL AND APPROACH SLAB SHALL BE GRADED TO DRAIN THE WATER AWAY FROM THE FILL FACE OF THE BRIDGE AND SHALL BE PAVED. SEE ROADWAY PLANS.

THE JOINT OPENING AT THE APPROACH SLAB/DECK INTERFACE SHALL BE SAWED NO MORE THAN 12 HOURS AFTER THE APPROACH SLAB IS CAST. THE JOINT SHALL BE CLEANED OF ALL DEBRIS BEFORE THE SEALANT IS APPLIED. THE JOINT SEALER MATERIAL SHALL CONFORM TO THE REQUIREMENTS OF SECTION 1028-3 OF THE STANDARD SPECIFICATIONS.

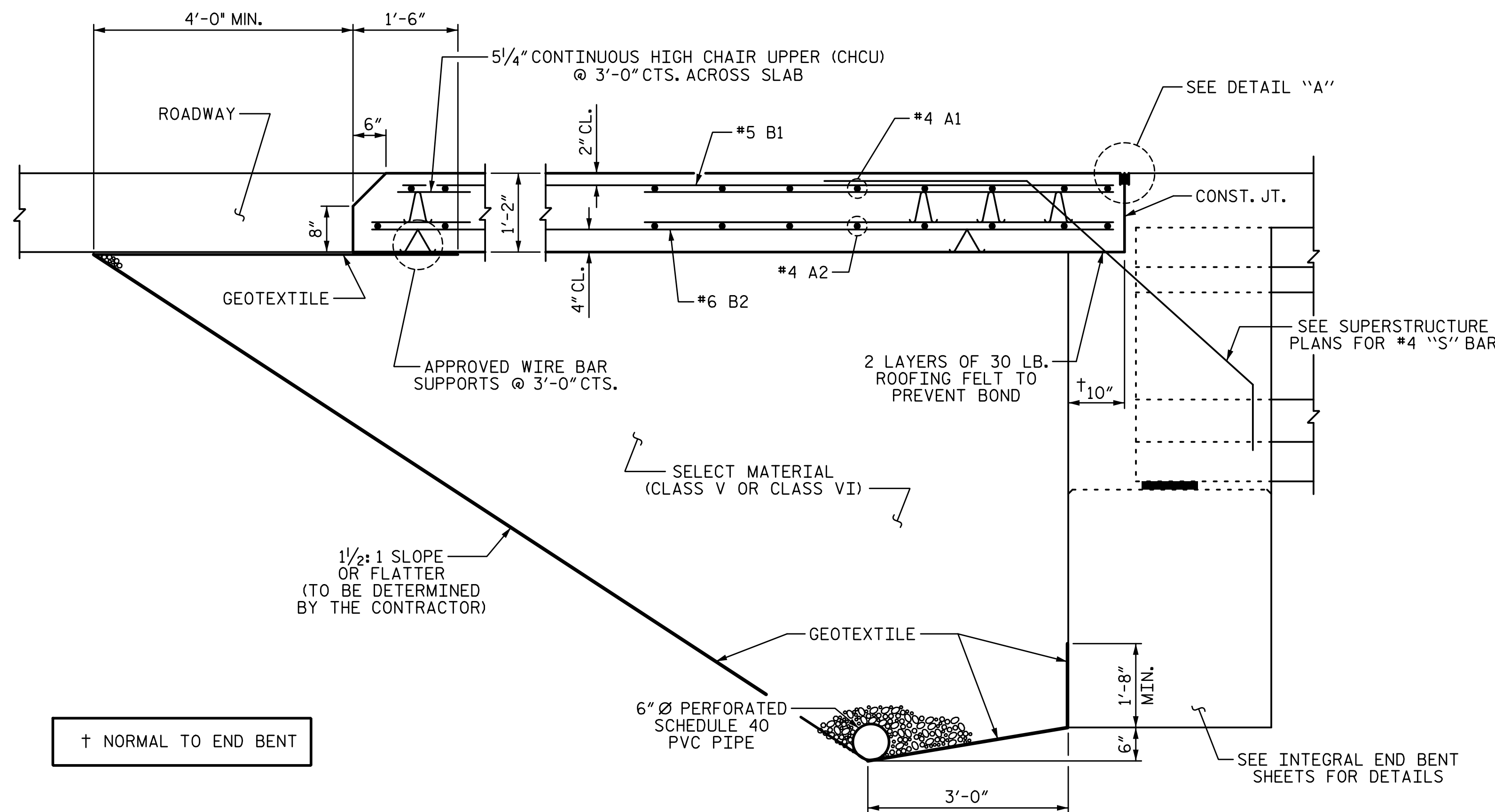
AT THE CONTRACTORS OPTION, "TYPE A - ALTERNATE APPROACH FILL" IN LIEU OF "TYPE I - STANDARD APPROACH FILL" MAY BE CONSTRUCTED AT NO ADDITIONAL COST TO THE DEPARTMENT. SEE SHEET 2 OF 2 FOR DETAILS AND NOTES.

BILL OF MATERIAL
FOR ONE APPROACH SLAB @ END BENT 1

BAR	NO.	SIZE	TYPE	LENGTH	WEIGHT
*A1	52	4	STR	28'-5"	987
A2	52	4	STR	28'-4"	984
*B1	101	5	STR	24'-2"	2546
B2	101	6	STR	24'-6"	3717
*B3	1	5	STR	24'-8"	26
B4	1	6	STR	24'-8"	37
*B5	1	5	STR	24'-10"	26
B6	1	6	STR	24'-10"	37
*B7	8	4	STR	24'-6"	131
*G1	50	4	STR	5'-3"	175
*U1	16	4	1	3'-2"	34
REINFORCING STEEL					4775 LB
* EPOXY COATED REINFORCING STEEL					3925 LB
CLASS AA CONCRETE					
POUR 1 (SLAB)					55.4 CY
POUR 2 (SIDEWALK)					6.2 CY
TOTAL					61.6 CY

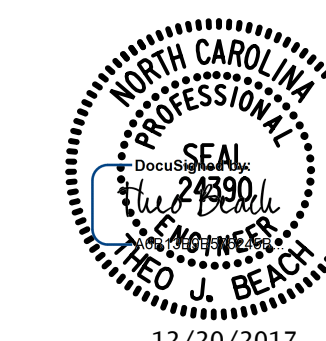
BILL OF MATERIAL
FOR ONE APPROACH SLAB @ END BENT 2

BAR	NO.	SIZE	TYPE	LENGTH	WEIGHT
*A1	52	4	STR	28'-0"	973
A2	52	4	STR	27'-10"	967
*B1	102	5	STR	24'-2"	2571
B2	102	6	STR	24'-6"	3753
*B7	8	4	STR	24'-6"	131
*G1	50	4	STR	5'-3"	175
*U1	16	4	1	3'-2"	34
REINFORCING STEEL					4720 LB
* EPOXY COATED REINFORCING STEEL					3884 LB
CLASS AA CONCRETE					
POUR 1 (SLAB)					55.0 CY
POUR 2 (SIDEWALK)					6.2 CY
TOTAL					61.2 CY



DRAWN BY: S.D. COOPER	DATE: 12-17
CHECKED BY: T.J. BEACH	DATE: 12-17
DESIGN ENGINEER OF RECORD: T.J. BEACH	DATE: 12-17

PLANS PREPARED BY:
SE & A
SIMPSON ENGINEERS ASSOCIATES
5640 Dillard Drive
Suite 200
Cary, NC 27518
(919) 852-0468
(919) 852-0538 (Fax)
www.simpsonengr.com
LICENSURE NO. C-2521



PROJECT NO. U-2525C
GUILFORD COUNTY
STATION: 25+52.71 -Y7-

SHEET 2 OF 4

STATE OF NORTH CAROLINA
DEPARTMENT OF TRANSPORTATION
RALEIGH

BRIDGE APPROACH SLAB FOR INTEGRAL END BENT

REVISIONS						SHEET NO.
NO.	BY:	DATE:	NO.	BY:	DATE:	TOTAL SHEETS
1			3			36
2			4			

DOCUMENT NOT CONSIDERED FINAL UNLESS ALL SIGNATURES COMPLETED