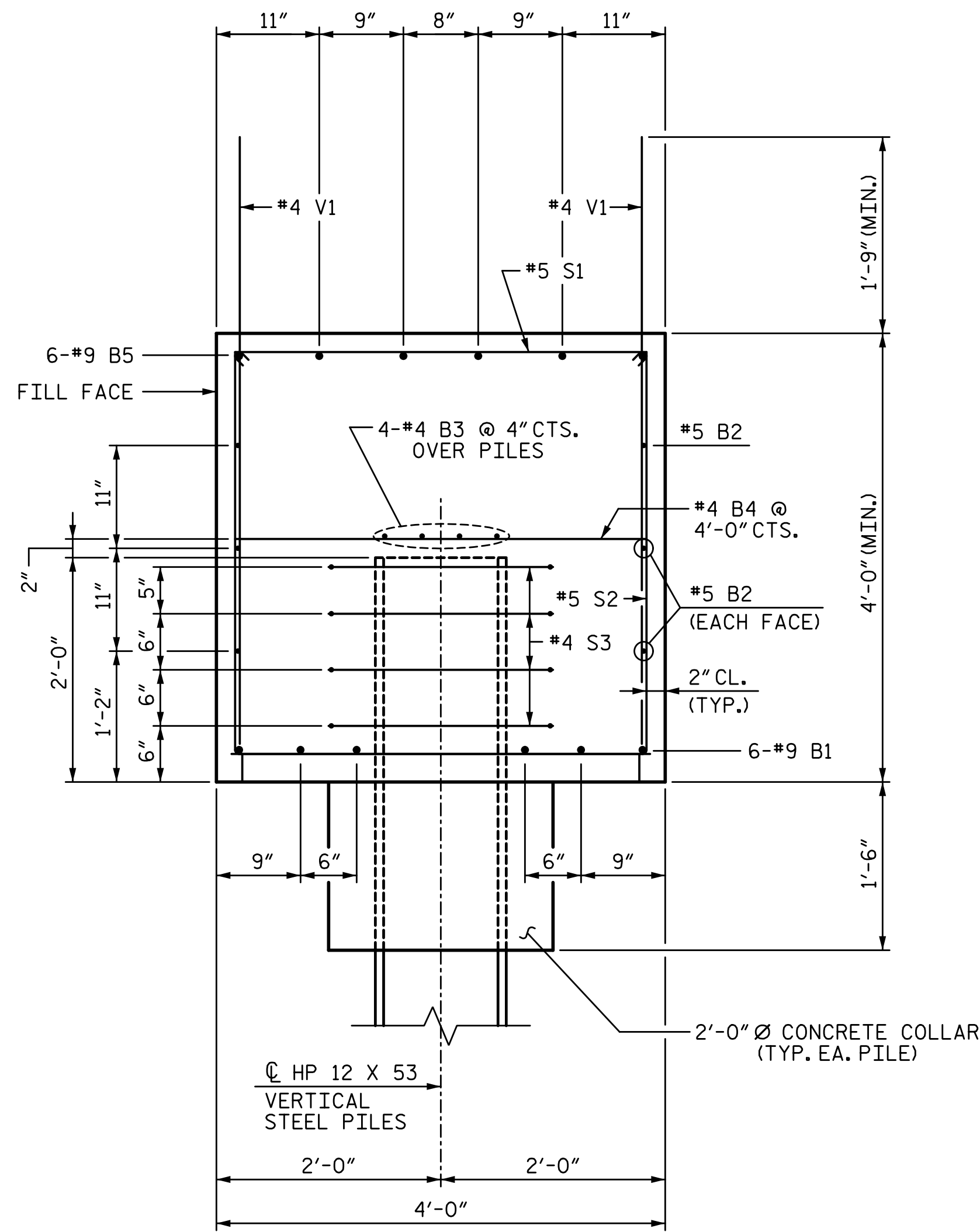
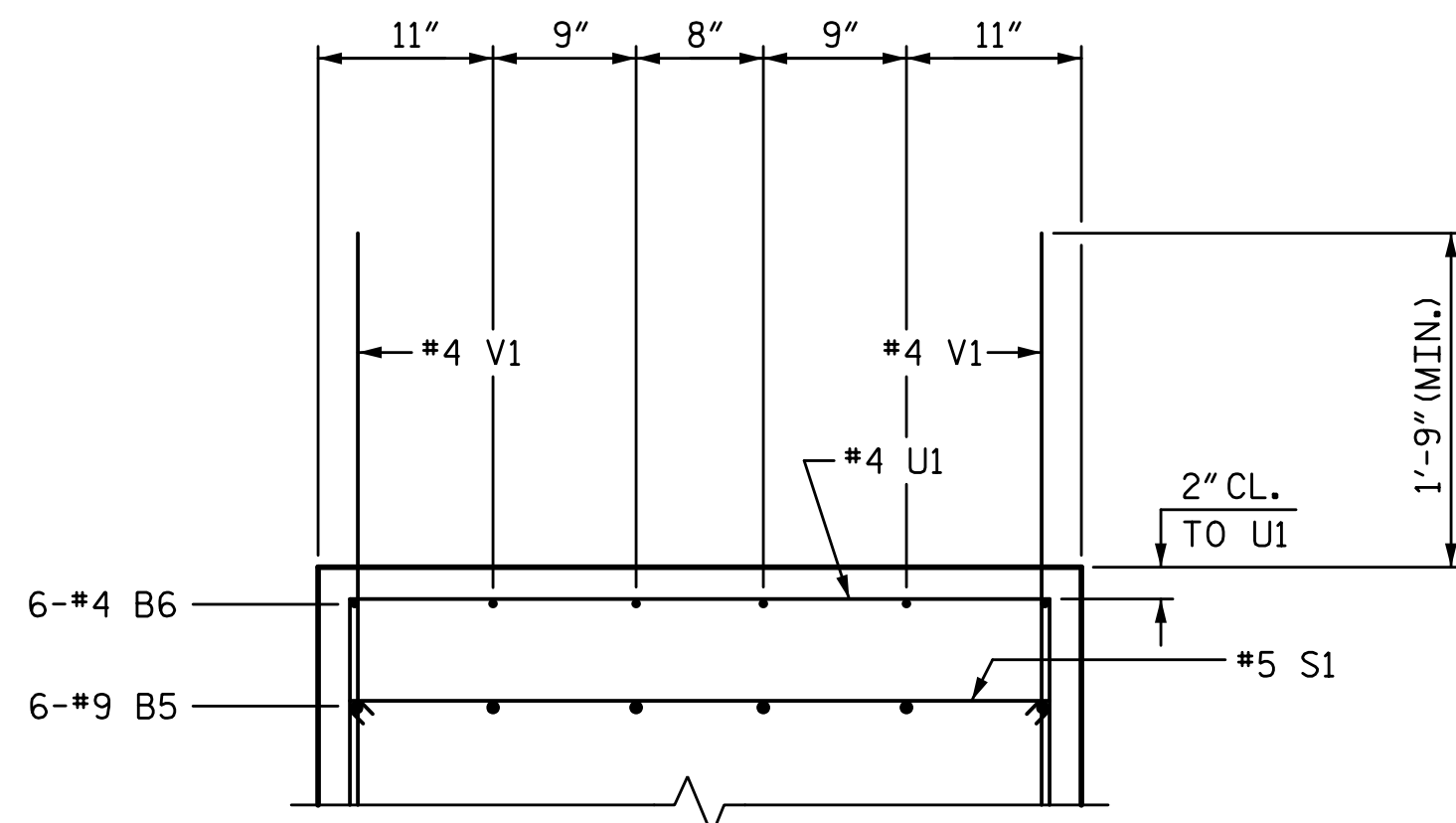


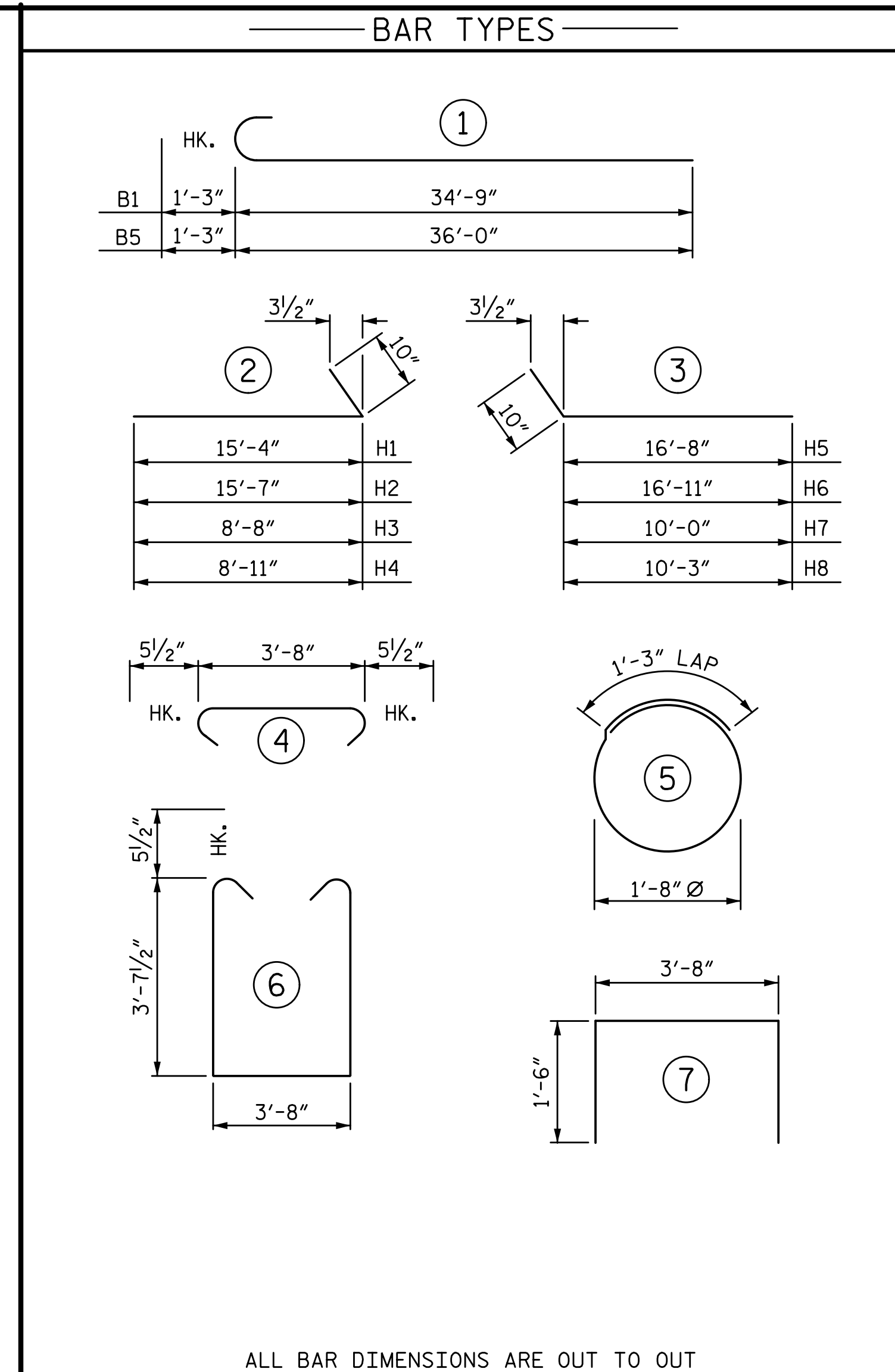
5/24/2017 1:05:32 PM G:\Projects\2016\U-2525C (Greensboro Eastern Loop)\Structures\Site 9\Drawings\Final\U2525C_SMU_EB2_SITE9.dgn



SECTION A-A

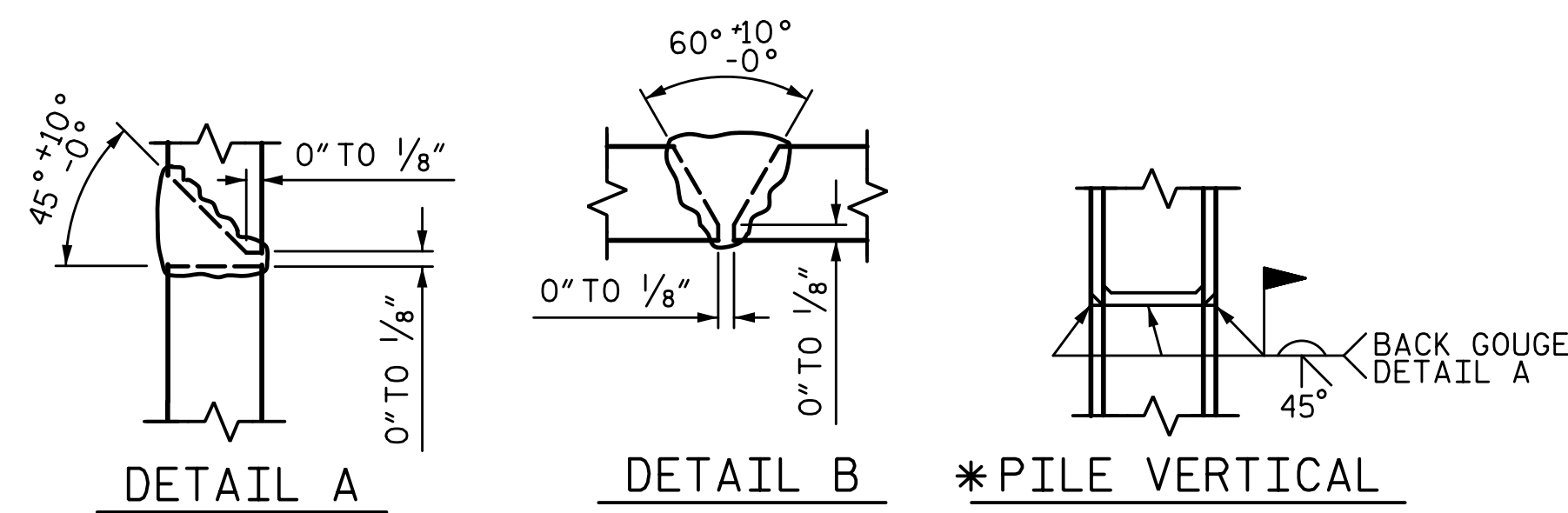


PARTIAL SECTION B-B

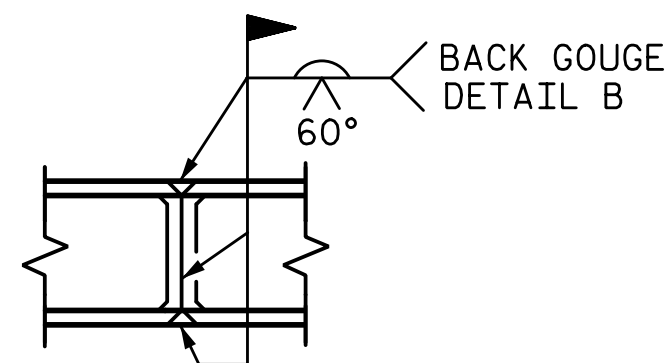


ALL BAR DIMENSIONS ARE OUT TO OUT

BILL OF MATERIAL					
END BENT 2					
BAR	NO.	SIZE	TYPE	LENGTH	WEIGHT
B1	12	#9	1	36'-0"	1469
B2	12	#5	STR	33'-2"	415
B3	12	#4	STR	22'-9"	182
B4	16	#4	STR	3'-8"	39
B5	12	#9	1	37'-3"	1520
B6	6	#4	STR	13'-2"	53
H1	14	#5	2	16'-2"	236
H2	14	#5	2	16'-5"	240
H3	8	#5	2	9'-6"	79
H4	8	#5	2	9'-9"	81
H5	14	#5	3	17'-6"	256
H6	14	#5	3	17'-9"	259
H7	8	#5	3	10'-10"	90
H8	8	#5	3	11'-1"	92
K1	56	#4	STR	4'-3"	159
S1	102	#5	4	4'-7"	488
S2	102	#5	6	11'-10"	1259
S3	44	#4	5	6'-6"	191
U1	14	#4	7	6'-8"	62
V1	78	#4	STR	5'-11"	308
V2	36	#5	STR	6'-7"	247
V3	34	#5	STR	10'-8"	378
V4	38	#5	STR	10'-7"	419
TOTAL REINFORCING STEEL					8522 LB
CLASS A CONCRETE					
POUR 1					
(CAP, COLLARS, & LOWER WINGS)					44.3 CY
POUR 2					
(UPPER WINGS)					10.1 CY
TOTAL CLASS A CONCRETE					54.4 CY
HP 12 X 53 STEEL PILES					
NO. 11					825 LF
PILE DRIVING EQUIPMENT SETUP					
HP 12 X 53 STEEL PILES					11 EA.



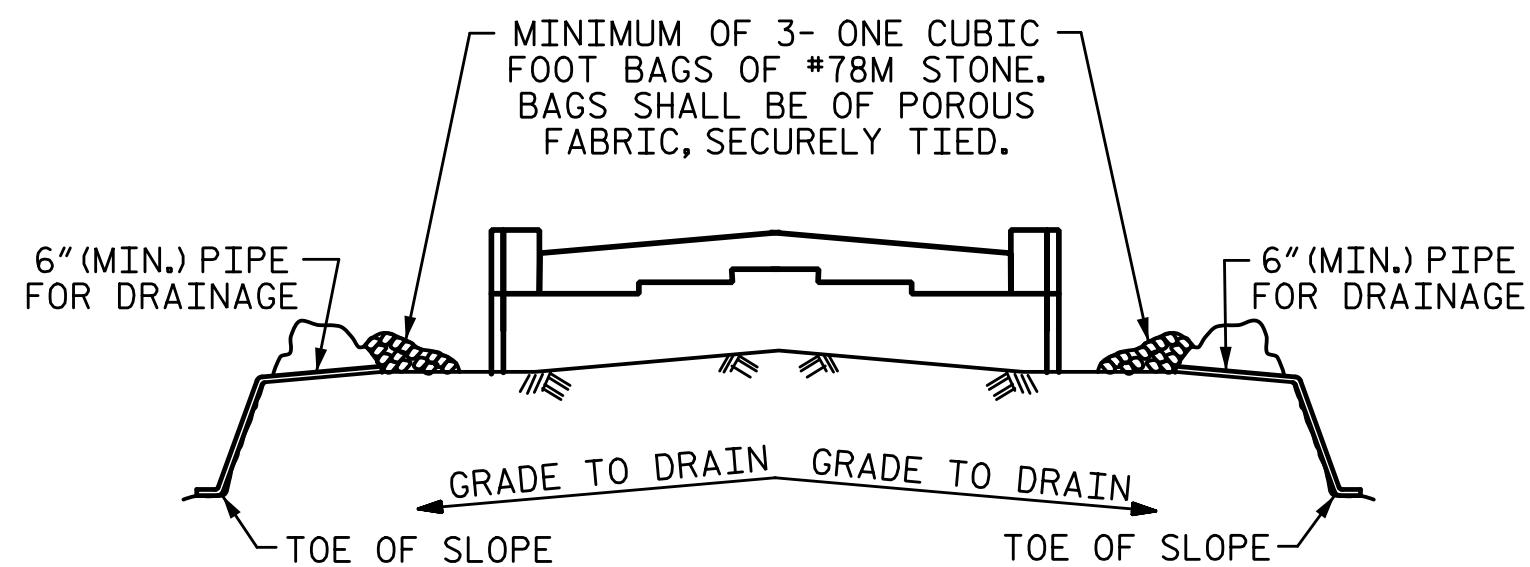
*PILE VERTICAL



*PILE HORIZONTAL OR VERTICAL

PILE SPLICE DETAILS

* POSITION OF PILE DURING WELDING



BAGGED STONE AND PIPE SHALL BE PLACED IMMEDIATELY AFTER COMPLETION OF END BENT EXCAVATION. PIPE MAY BE EITHER CONCRETE, CORRUGATED STEEL, CORRUGATED ALUMINUM ALLOY, OR CORRUGATED PLASTIC. PERFORATED PIPE WILL NOT BE ALLOWED.

BAGGED STONE SHALL REMAIN IN PLACE UNTIL THE ENGINEER DIRECTS THAT IT BE REMOVED. THE CONTRACTOR SHALL REMOVE AND DISPOSE OF SILT ACCUMULATIONS AT BAGGED STONE WHEN SO DIRECTED BY THE ENGINEER. BAGS SHALL BE REMOVED AND REPLACED WHENEVER THE ENGINEER DETERMINES THAT THEY HAVE DETERIORATED AND LOST THEIR EFFECTIVENESS.

NO SEPARATE PAYMENT WILL BE MADE FOR THIS WORK AND THE ENTIRE COST OF THIS WORK SHALL BE INCLUDED IN THE UNIT CONTRACT PRICE BID FOR THE SEVERAL PAY ITEMS.

TEMPORARY DRAINAGE AT END BENT

PROJECT NO. U-2525C
GUILFORD COUNTY
 STATION: 25+52.71 -Y7-

SHEET 3 OF 3

STATE OF NORTH CAROLINA
 DEPARTMENT OF TRANSPORTATION
 RALEIGH
 SUBSTRUCTURE

END BENT 2

REVISIONS

NO.	BY:	DATE:	NO.	BY:	DATE:
1			3		
2			4		

SHEET NO.	S10-31
TOTAL SHEETS	36

PLANS PREPARED BY:

SIMPSON
ENGINEERS
& ASSOCIATES
 5640 Dillard Drive
 Suite 200
 Cary, NC 27518
 (919) 852-0468
 (919) 852-0538 (Fax)
 www.simpsonengr.com
 LICENSURE NO. C-2521



DOCUMENT NOT CONSIDERED FINAL
 UNLESS ALL SIGNATURES COMPLETED

DRAWN BY:	S.D. COOPER	DATE:	3-17
CHECKED BY:	T.J. BEACH	DATE:	3-17
DESIGN ENGINEER OF RECORD:	T.J. BEACH	DATE:	3-17