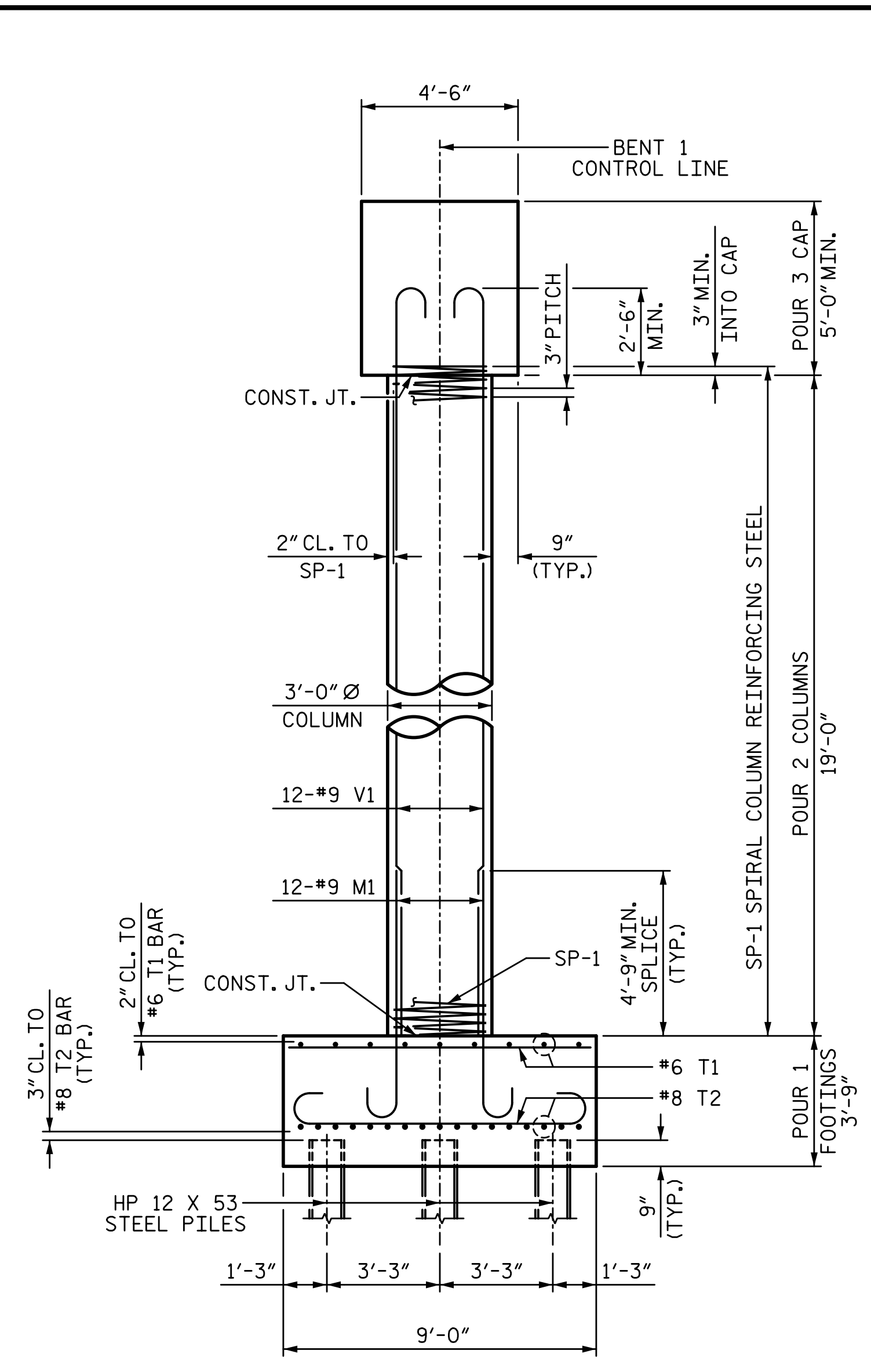
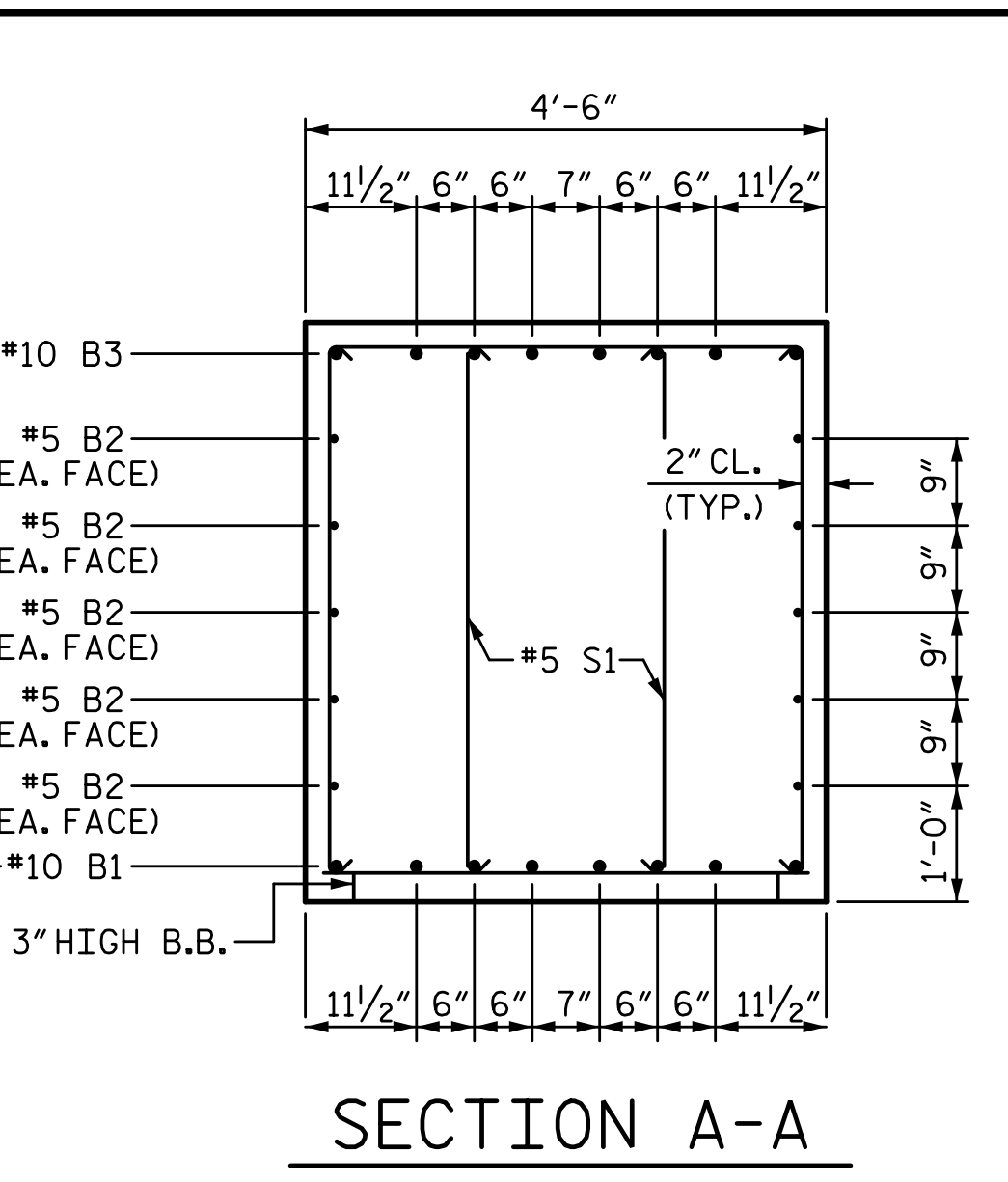
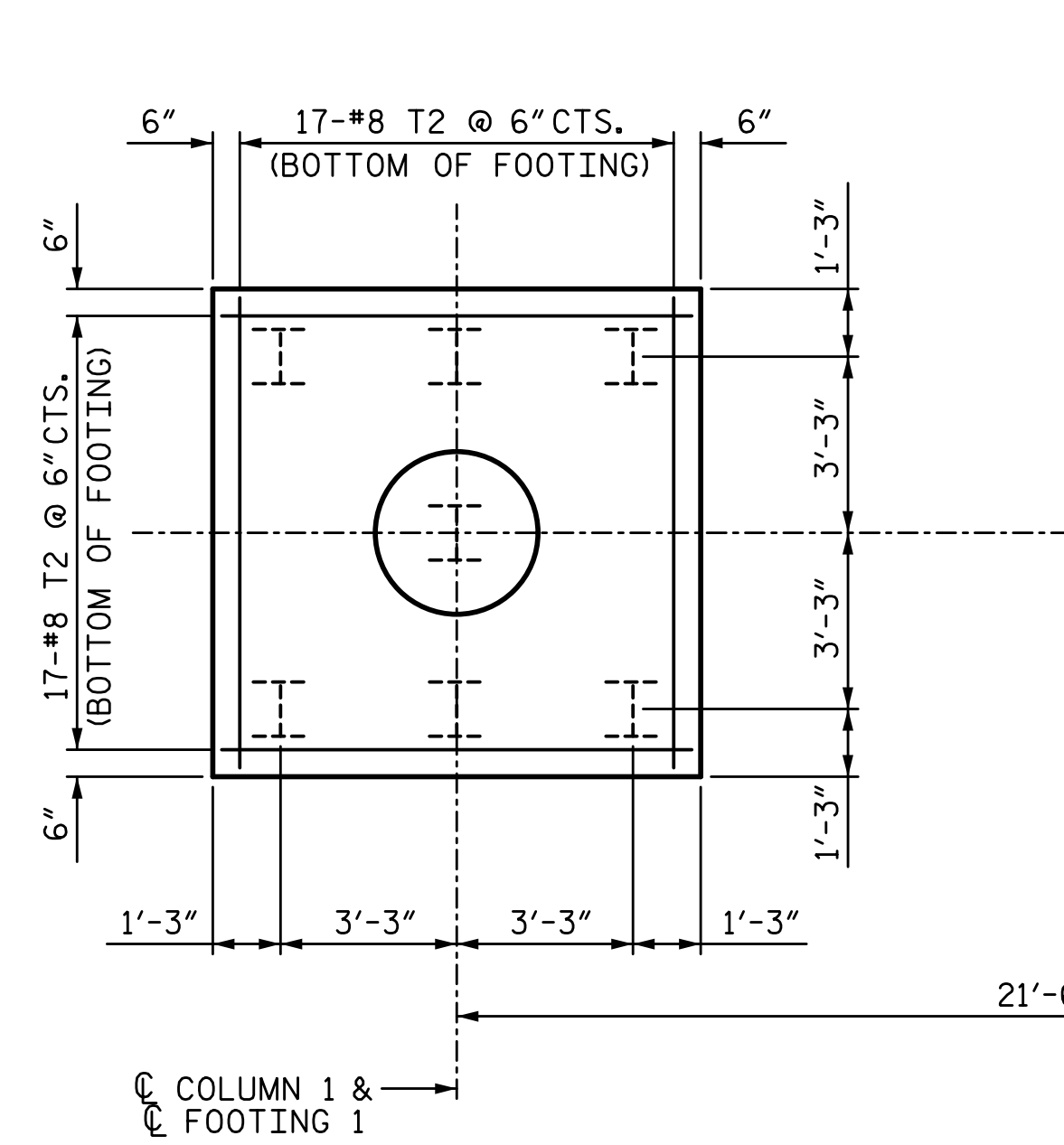


5/24/2017 1:05:31 PM G:\Projects\2016\U-2525C (Greensboro Eastern Loop)\Structures\Site 9\Drawings\Final\U2525C_SMU_BT1_SITE9.dgn

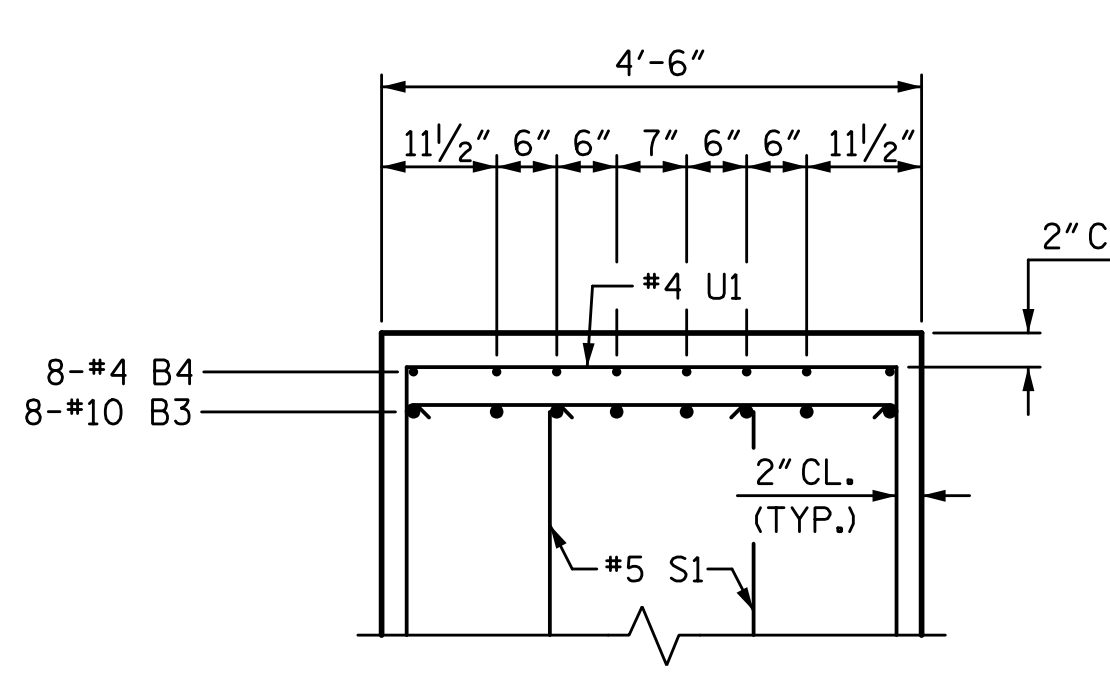


END ELEVATION

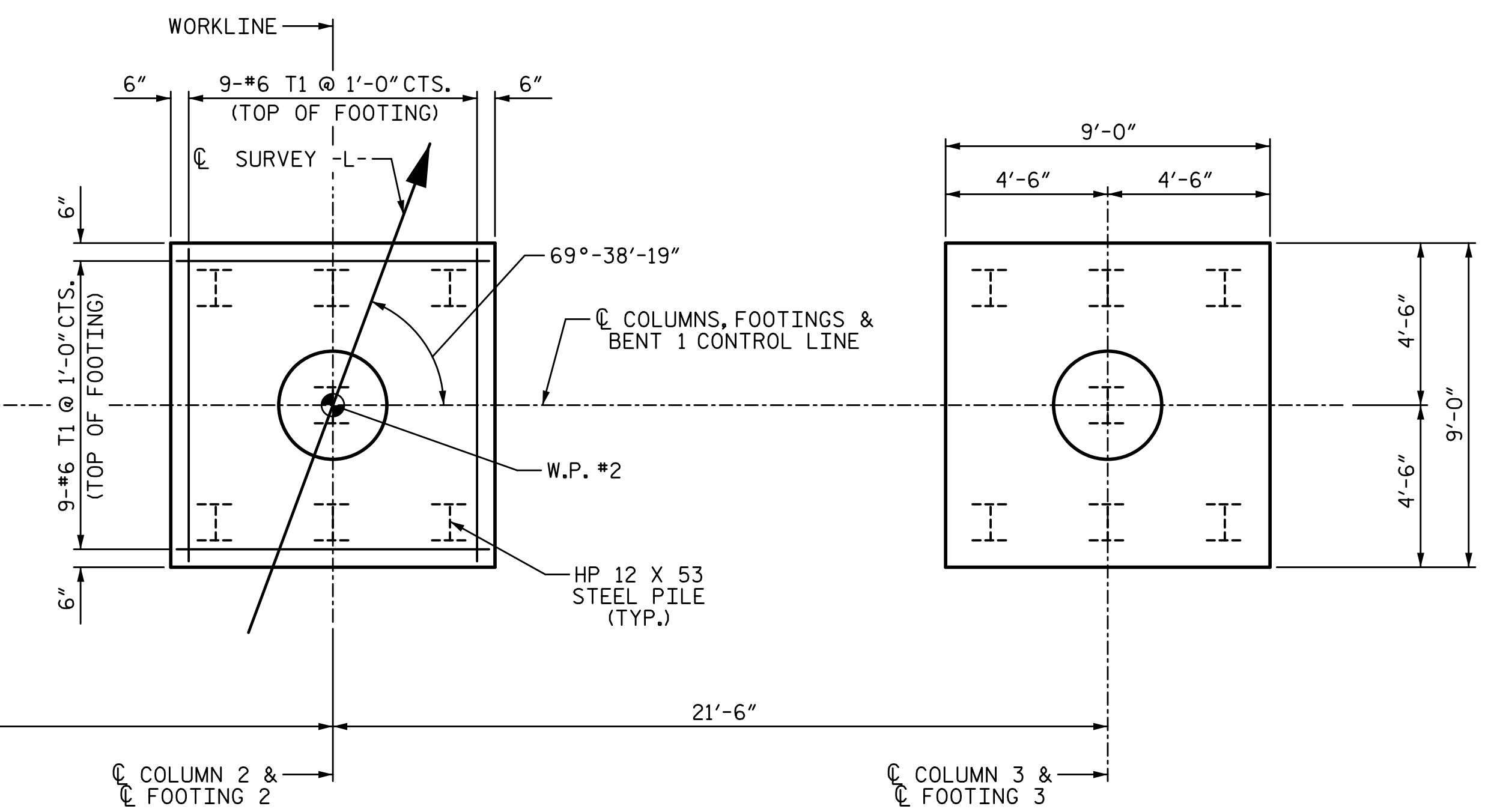
DETAILS, DIMENSIONS & REINFORCING STEEL ARE TYPICAL FOR EACH COLUMN AND FOOTING



SECTION A-A



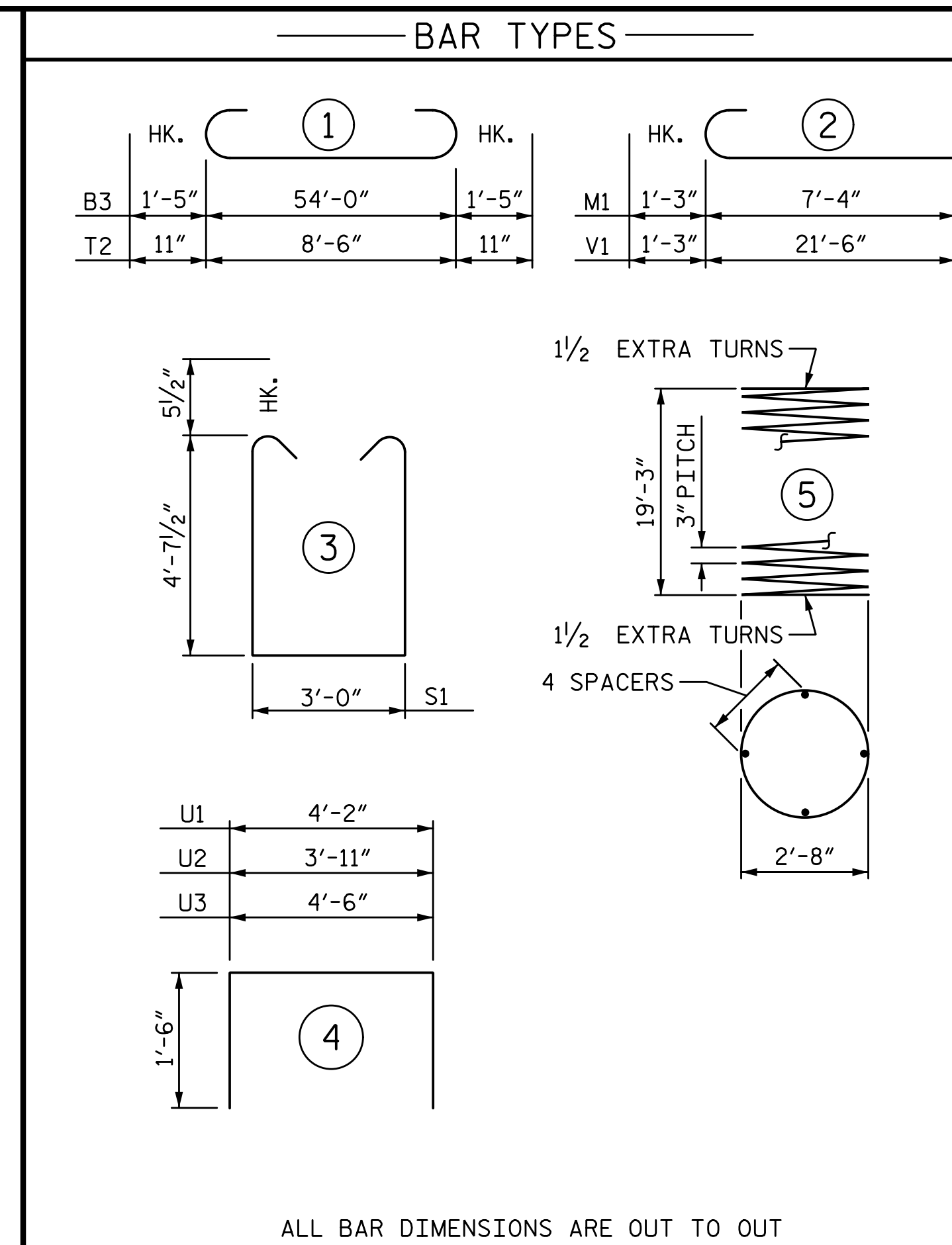
PARTIAL SECTION B-B



PLAN OF FOOTINGS

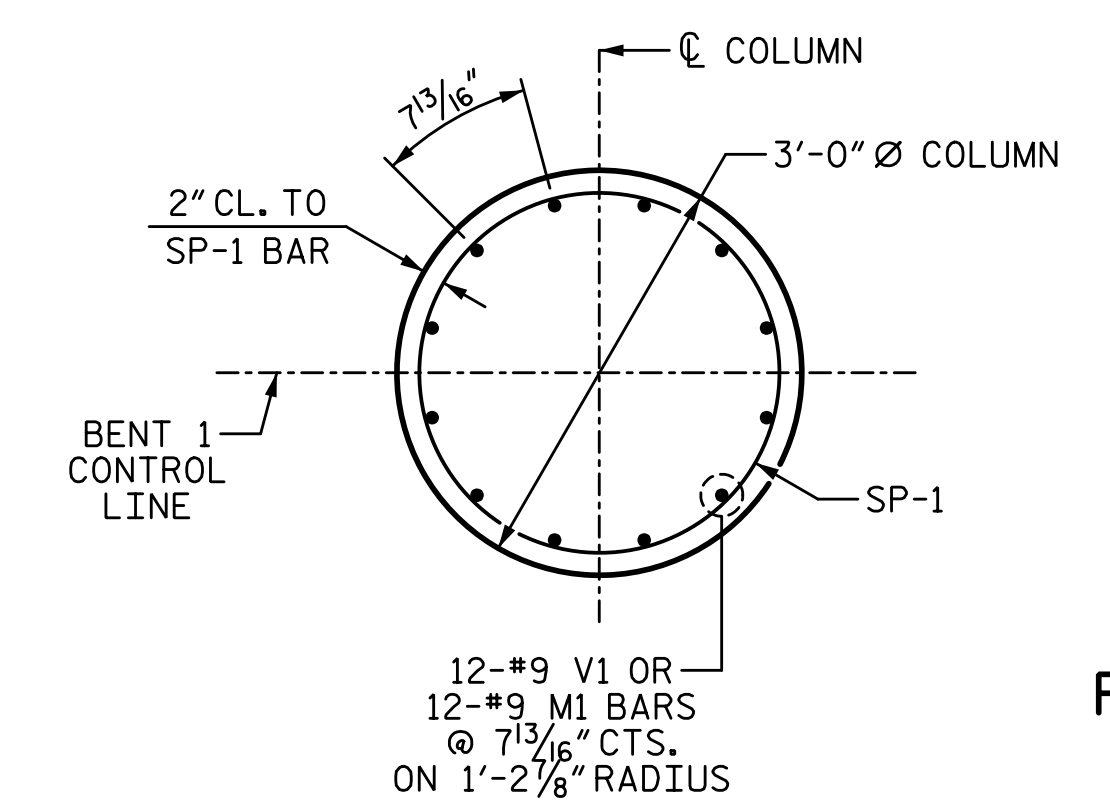
PILE PLACEMENT, DIMENSIONS AND REINFORCING STEEL ARE TYPICAL FOR EACH FOOTING

DRAWN BY: S.D. COOPER DATE: 3-17
 CHECKED BY: T.J. BEACH DATE: 3-17
 DESIGN ENGINEER OF RECORD: T.J. BEACH DATE: 3-17



ALL BAR DIMENSIONS ARE OUT TO OUT

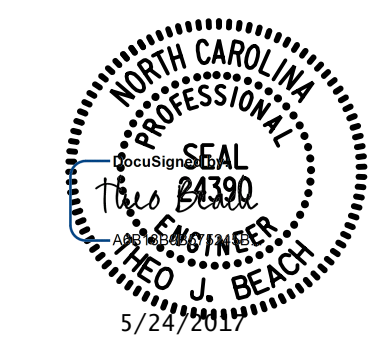
* THE "SP-1" SPIRAL REINFORCING STEEL SHALL BE W20 OR D-20 COLD DRAWN WIRE OR #4 PLAIN OR DEFORMED BAR.



PLAN OF COLUMN

DIMENSIONS AND REINFORCING STEEL ARE TYPICAL FOR EACH COLUMN

PLANS PREPARED BY:
SIMPSON ENGINEERS ASSOCIATES
 5640 Dillard Drive
 Suite 200
 Cary, NC 27518
 (919) 852-0468
 (919) 852-0598 (Fax)
 www.simpsonengr.com
 LICENSURE NO. C-2521



BILL OF MATERIAL					
BENT 1					
BAR	NO.	SIZE	TYPE	LENGTH	WEIGHT
B1	8	#10	STR	54'-2"	1865
B2	10	#5	STR	54'-2"	565
B3	8	#10	1	56'-10"	1956
B4	8	#4	STR	14'-2"	76
M1	36	#9	2	8'-7"	1051
S1	200	#5	3	13'-2"	2747
T1	54	#6	STR	8'-6"	689
T2	102	#8	1	10'-4"	2814
U1	58	#4	4	7'-2"	278
U2	10	#4	4	6'-11"	46
U3	8	#4	4	7'-6"	40
V1	36	#9	2	22'-9"	2785
SP-1	3	*	5	660'-1"	1323
REINFORCING STEEL					14912 LB
SPIRAL COL. REINF. STEEL					1323 LB
CLASS A CONCRETE BREAKDOWN					
POUR 1 (FOOTINGS)					33.8 CY
POUR 2 (COLUMNS)					15.0 CY
POUR 3 (CAP)					47.2 CY
TOTAL					96.0 CY
HP 12 X 53 STEEL PILES NO. = 21					945 LF
PILE DRIVING EQUIPMENT SETUP HP 12 X 53 STEEL PILES					21 EA.

PROJECT NO. U-2525C
GUILFORD COUNTY
 STATION: 25+52.71 -Y7-

SHEET 2 OF 2

STATE OF NORTH CAROLINA DEPARTMENT OF TRANSPORTATION RALEIGH SUBSTRUCTURE					
BENT 1					
REVISIONS					
NO.	BY:	DATE:	NO.	BY:	DATE:
1			3		
2			4		

SHEET NO. S10-28
TOTAL SHEETS 36

DOCUMENT NOT CONSIDERED FINAL UNLESS ALL SIGNATURES COMPLETED