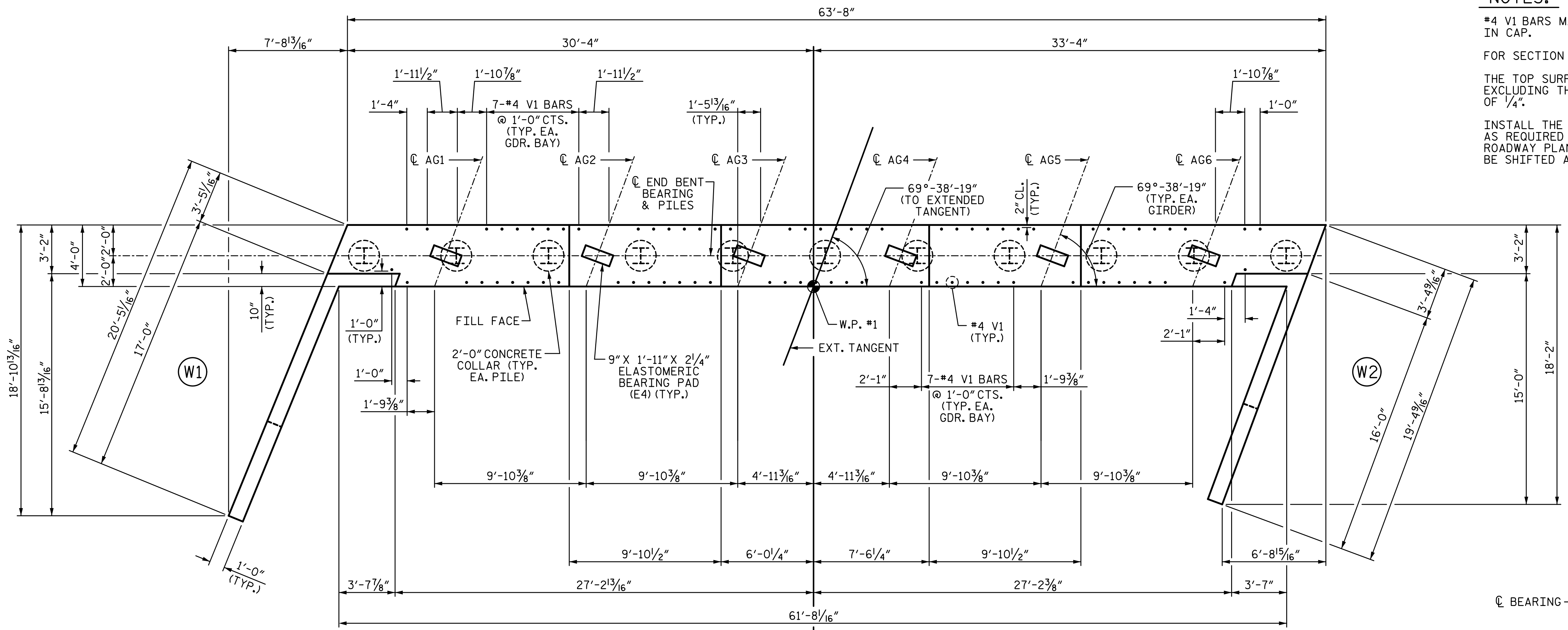
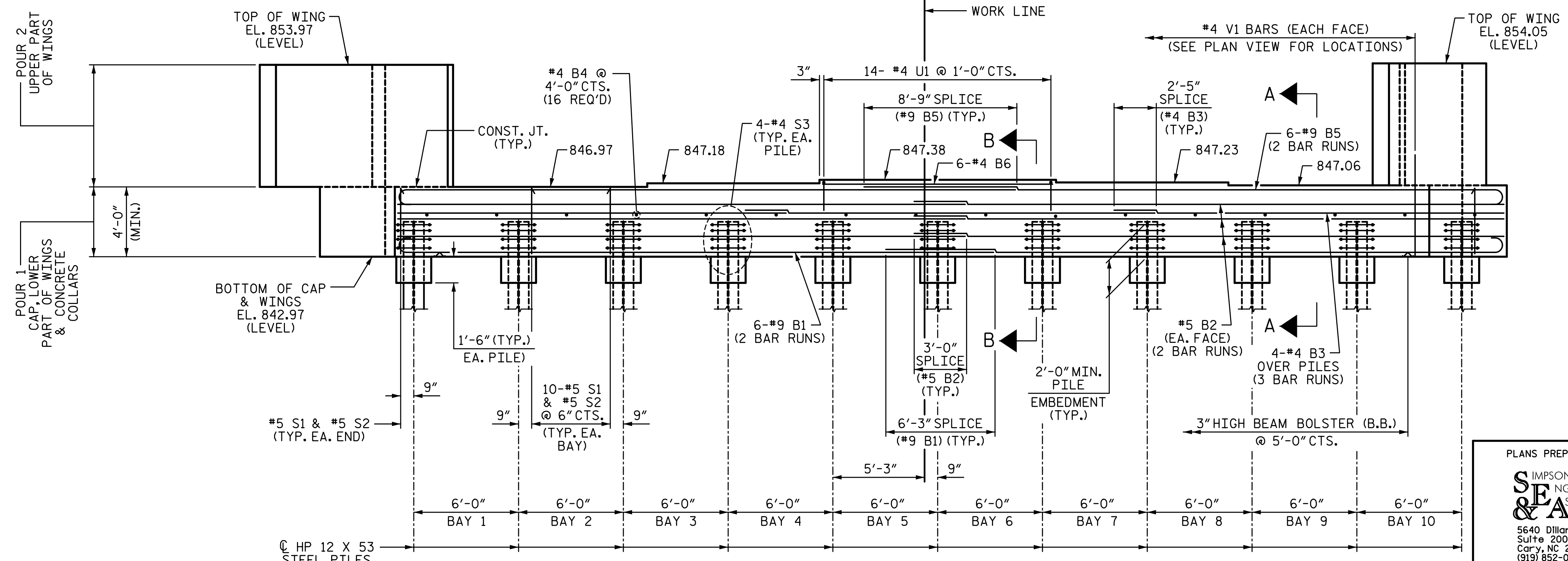


5/24/2017 1:05:29 PM G:\Projects\2016\U-2525C (Greensboro Eastern Loop)\Structures\Site 9\Drawings\Final\U2525C_SMU_EB1_SITE9.dgn



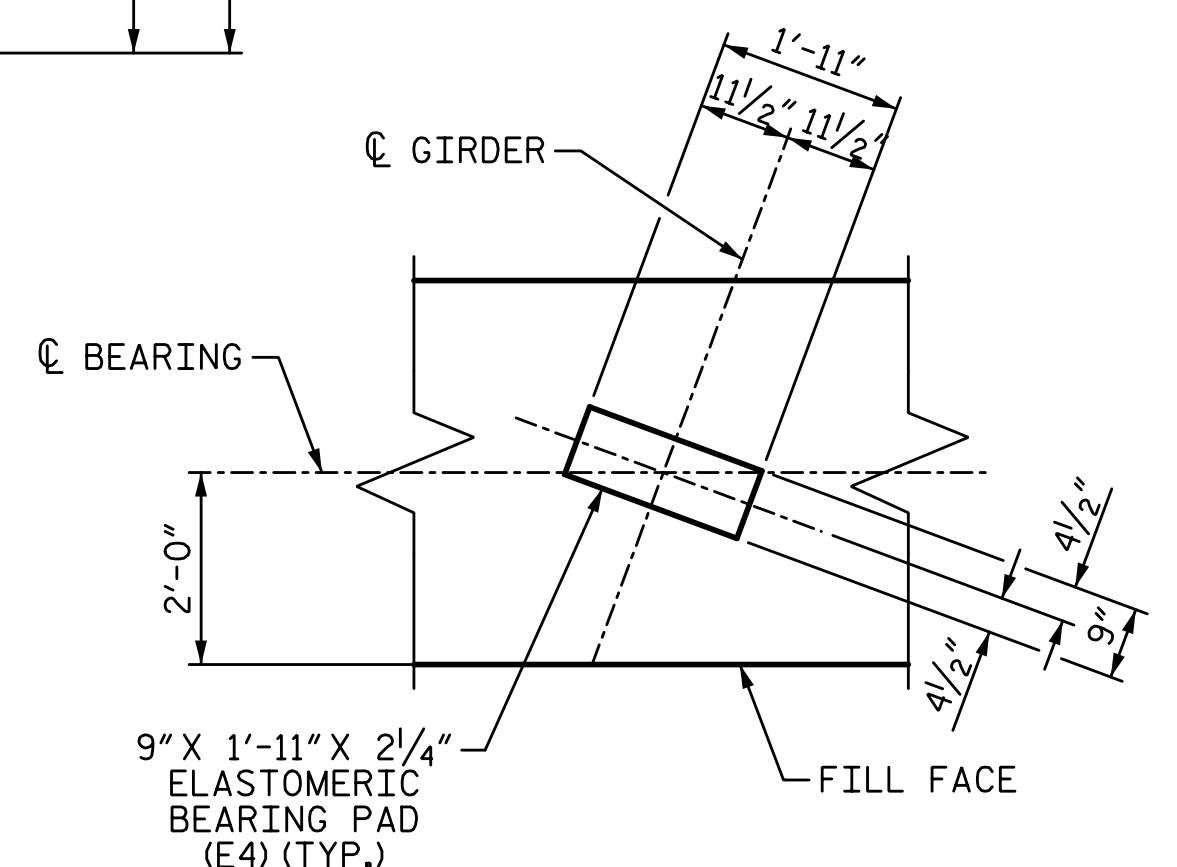
PLAN



ELEVATION

NOTES:

- #4 V1 BARS MAY BE SHIFTED SLIGHTLY TO AVOID STIRRUPS IN CAP.
- FOR SECTION A-A & B-B, SEE SHEET 3 OF 3.
- THE TOP SURFACE OF THE END BENT CAP AND WINGS (POUR 1), EXCLUDING THE BEARING AREA, SHALL BE RAKED TO A DEPTH OF 1/4".
- INSTALL THE 4" DIAMETER DRAIN PIPE THROUGH THE WINGWALL AS REQUIRED FOR REINFORCED BRIDGE APPROACH FILLS, SEE ROADWAY PLANS. REINFORCING STEEL IN THE WINGWALL MAY BE SHIFTED AS NECESSARY TO CLEAR THE DRAIN PIPE.



DETAIL "A"
(TYP. EA. GIRDER)

PROJECT NO. U-2525C
GUILFORD COUNTY
 STATION: 25+52.71 -Y7-

SHEET 1 OF 3

STATE OF NORTH CAROLINA
 DEPARTMENT OF TRANSPORTATION
 RALEIGH
 SUBSTRUCTURE

END BENT 1

PLANS PREPARED BY:
SIMPSON ENGINEERS & ASSOCIATES
 5640 Dillard Drive
 Suite 200
 Cary, NC 27518
 (919) 852-0468
 (919) 852-0598 (Fax)
 www.simpsonengr.com
 LICENSURE NO. C-2521



REVISIONS						SHEET NO.	
NO.	BY:	DATE:	NO.	BY:	DATE:	S10-24	
1			3			TOTAL SHEETS	
2			4			36	

DRAWN BY: S.D. COOPER DATE: 3-17
 CHECKED BY: T.J. BEACH DATE: 3-17
 DESIGN ENGINEER OF RECORD: T.J. BEACH DATE: 3-17

**DOCUMENT NOT CONSIDERED FINAL
 UNLESS ALL SIGNATURES COMPLETED**