

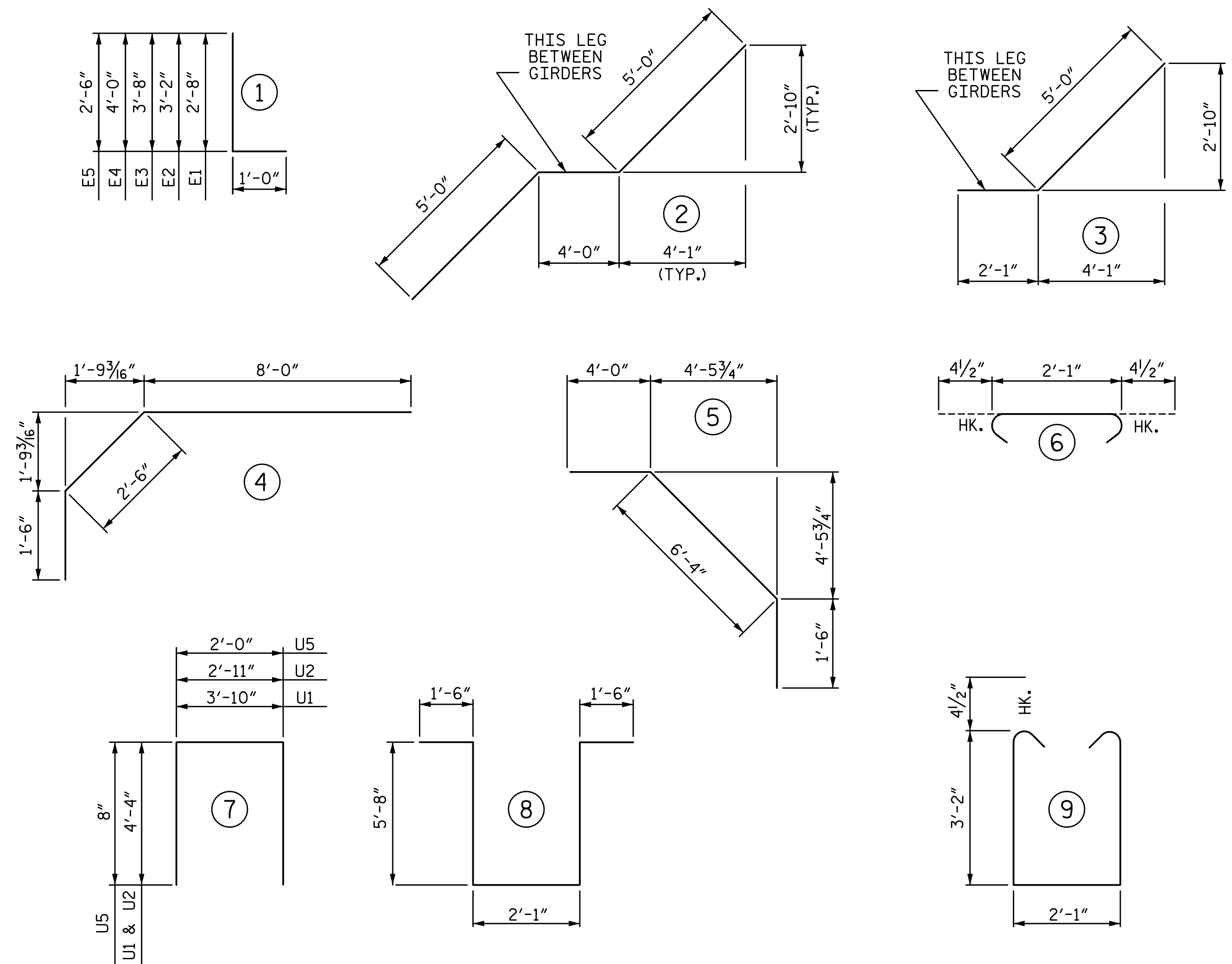
5/24/2017 1:38:26 PM G:\Projects\2016\U-2525C (Greensboro Eastern Loop)\Structures\Site 9\Drawings\Final\U2525C\_SMU\_BM\_SITE9.dgn

**BILL OF MATERAIL**

SPAN A & B																	
BAR	NO.	SIZE	TYPE	LENGTH	WEIGHT	BAR	NO.	SIZE	TYPE	LENGTH	WEIGHT	BAR	NO.	SIZE	TYPE	LENGTH	WEIGHT
*A1	349	#5	STR	53'-3"	19383	A201	2	#5	STR	52'-4"	109	*B1	71	#7	STR	25'-3"	3664
A2	349	#5	STR	53'-3"	19383	A202	2	#5	STR	50'-8"	106	*B2	108	#4	STR	21'-8"	1563
						A203	2	#5	STR	49'-0"	102	*B3	108	#7	STR	30'-11"	6825
*A101	2	#5	STR	52'-4"	109	A204	2	#5	STR	47'-3"	99	*B4	35	#7	STR	36'-3"	2593
*A102	2	#5	STR	50'-8"	106	A205	2	#5	STR	45'-7"	95	*B5	108	#4	STR	19'-8"	1419
*A103	2	#5	STR	49'-0"	102	A206	2	#5	STR	43'-11"	92	*B6	71	#7	STR	23'-0"	3338
*A104	2	#5	STR	47'-3"	99	A207	2	#5	STR	42'-3"	88	B7	325	#5	STR	49'-5"	16751
*A105	2	#5	STR	45'-7"	95	A208	2	#5	STR	40'-7"	85	*B8	60	#4	STR	26'-10"	1075
*A106	2	#5	STR	43'-11"	92	A209	2	#5	STR	38'-10"	81	*B9	48	#4	STR	30'-0"	962
*A107	2	#5	STR	42'-3"	88	A210	2	#5	STR	37'-2"	78						
*A108	2	#5	STR	40'-7"	85	A211	2	#5	STR	35'-6"	74	*E1	8	#7	1	3'-8"	60
*A109	2	#5	STR	38'-10"	81	A212	2	#5	STR	33'-10"	71	*E2	8	#7	1	4'-2"	68
*A110	2	#5	STR	37'-2"	78	A213	2	#5	STR	32'-2"	67	*E3	8	#7	1	4'-8"	76
*A111	2	#5	STR	35'-6"	74	A214	2	#5	STR	30'-5"	63	*E4	8	#7	1	5'-0"	82
*A112	2	#5	STR	33'-10"	71	A215	2	#5	STR	28'-9"	60	*E5	4	#7	1	3'-6"	29
*A113	2	#5	STR	32'-2"	67	A216	2	#5	STR	27'-1"	56						
*A114	2	#5	STR	30'-5"	63	A217	2	#5	STR	25'-5"	53	*F1	8	#6	STR	2'-11"	35
*A115	2	#5	STR	28'-9"	60	A218	2	#5	STR	23'-9"	50	*F2	8	#6	STR	3'-9"	45
*A116	2	#5	STR	27'-1"	56	A219	2	#5	STR	22'-0"	46	*F3	8	#6	STR	3'-5"	41
*A117	2	#5	STR	25'-5"	53	A220	2	#5	STR	20'-4"	42	*F4	4	#6	STR	3'-11"	24
*A118	2	#5	STR	23'-9"	50	A221	2	#5	STR	18'-8"	39	*F5	4	#6	STR	3'-7"	22
*A119	2	#5	STR	22'-0"	46	A222	2	#5	STR	17'-0"	35						
*A120	2	#5	STR	20'-4"	42	A223	2	#5	STR	15'-3"	32	*G1	472	#4	STR	6'-3"	1971
*A121	2	#5	STR	18'-8"	39	A224	2	#5	STR	13'-7"	28	*G2	4	#4	STR	6'-8"	18
*A122	2	#5	STR	17'-0"	35	A225	2	#5	STR	11'-11"	25						
*A123	2	#5	STR	15'-3"	32	A226	2	#5	STR	10'-3"	21	K1	24	#4	STR	29'-8"	476
*A124	2	#5	STR	13'-7"	28	A227	2	#5	STR	8'-7"	18	K2	10	#4	STR	7'-3"	48
*A125	2	#5	STR	11'-11"	25	A228	2	#5	STR	6'-10"	14	K3	50	#4	STR	8'-9"	292
*A126	2	#5	STR	10'-3"	21	A229	2	#5	STR	5'-2"	11	K4	4	#4	STR	2'-4"	6
*A127	2	#5	STR	8'-7"	18	A230	2	#5	STR	3'-6"	7	K5	20	#4	STR	3'-3"	43
*A128	2	#5	STR	6'-10"	14	A231	2	#5	STR	1'-10"	4	K6	10	#4	STR	6'-0"	40
*A129	2	#5	STR	5'-2"	11							K7	40	#4	STR	8'-10"	236
*A130	2	#5	STR	3'-6"	7							K8	10	#4	STR	5'-7"	37
*A131	2	#5	STR	1'-10"	4							K9	24	#4	2	14'-0"	224
												K10	12	#4	3	7'-1"	57
												*S1	70	#4	4	12'-0"	561
												*S2	70	#4	5	11'-10"	553
												S3	180	#4	6	2'-10"	341
												U1	74	#4	7	12'-6"	618
												U2	4	#4	7	11'-7"	31
												U3	30	#4	8	16'-5"	329
												U4	10	#4	9	9'-2"	61
												*U5	136	#4	7	3'-4"	303

\* INDICATES EPOXY COATED REINFORCING STEEL

**BAR TYPES**



ALL BAR DIMENSIONS ARE OUT TO OUT

**SUPERSTRUCTURE REINFORCING STEEL LENGTHS ARE BASED ON THE FOLLOWING MINIMUM SPLICE LENGTHS**

BAR SIZE	SUPERSTRUCTURE EXCEPT APPROACH SLABS, PARAPET, AND BARRIER RAIL		APPROACH SLABS		PARAPET AND BARRIER RAIL
	EPOXY COATED	UNCOATED	EPOXY COATED	UNCOATED	
#4	2'-0"	1'-9"	2'-0"	1'-9"	2'-9"
#5	2'-6"	2'-2"	2'-6"	2'-2"	3'-5"
#6	3'-0"	2'-7"	3'-10"	2'-7"	4'-4"
#7	5'-3"	3'-6"			
#8	6'-10"	4'-7"			

**GROOVING BRIDGE FLOORS**

APPROACH SLABS	1,786	SQ. FT.
BRIDGE DECK	8,802	SQ. FT.
TOTAL	10,588	SQ. FT.

**—SUPERSTRUCTURE BILL OF MATERIAL—**

	CLASS AA CONCRETE	REINFORCING STEEL	EPOXY COATED REINFORCING STEEL
	CY	LB	LB
POUR 1	192.2		
POUR 2	220.4		
POUR 3	106.7		
SIDEWALK	80.7		
END POST	1.8		
TOTALS**	601.8	40724	46461

\*\* QUANTITIES FOR BARRIER RAIL ARE NOT INCLUDED

PROJECT NO. U-2525C  
GUILFORD COUNTY  
 STATION: 25+52.71 -Y7-

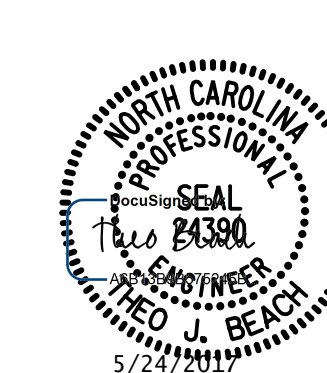
SHEET 1 OF 2

STATE OF NORTH CAROLINA  
 DEPARTMENT OF TRANSPORTATION  
 RALEIGH  
 SUPERSTRUCTURE

**BILL OF MATERIAL**

PLANS PREPARED BY:

**SIMPSON ENGINEERS & ASSOCIATES**  
 5640 Dillard Drive  
 Suite 200  
 Cary, NC 27518  
 (919) 852-0468  
 (919) 852-0538 (Fax)  
 www.simpsonengr.com  
 LICENSURE NO. C-2521



REVISIONS

NO.	BY:	DATE:	NO.	BY:	DATE:
1			3		
2			4		

SHEET NO. S10-22  
 TOTAL SHEETS 36

DRAWN BY: S.D. COOPER DATE: 3-17  
 CHECKED BY: T.J. BEACH DATE: 3-17  
 DESIGN ENGINEER OF RECORD: T.J. BEACH DATE: 3-17

**DOCUMENT NOT CONSIDERED FINAL UNLESS ALL SIGNATURES COMPLETED**