

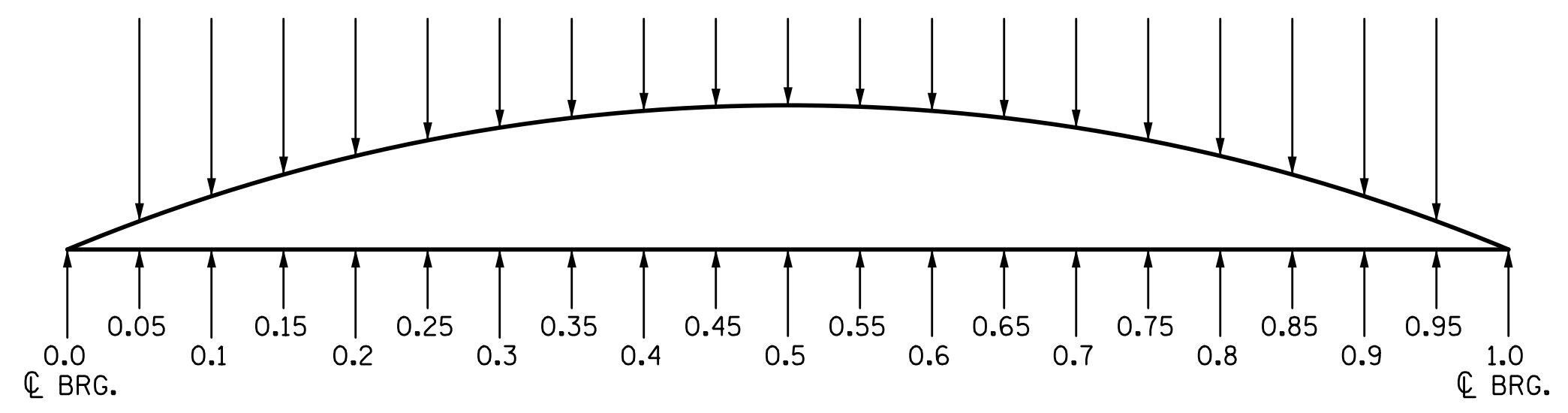
5/24/2017 1:05:26 PM G:\Projects\2016\U-2525C (Greensboro Eastern Loop)\Structures\Site 9\Drawings\Final\U2525C-SMU_DL-SITE9.dgn

DEAD LOAD DEFLECTION AND CAMBER TABLE FOR EXTERIOR GIRDERS - SPAN "A"																						
GIRDER		TWENTIETH POINTS																				
		0	0.05	0.1	0.15	0.2	0.25	0.3	0.35	0.4	0.45	0.5	0.55	0.6	0.65	0.7	0.75	0.8	0.85	0.9	0.95	1.0
AG1 & AG6	CAMBER (GIRDER ALONE IN PLACE) ↑	0.000	0.058	0.115	0.168	0.217	0.260	0.297	0.327	0.348	0.361	0.365	0.361	0.348	0.327	0.297	0.260	0.217	0.168	0.115	0.058	0.000
	DEFLECTION DUE TO SUPERIMPOSED D.L. * ↓	0.000	0.036	0.076	0.114	0.149	0.179	0.206	0.226	0.242	0.251	0.254	0.251	0.242	0.226	0.206	0.179	0.149	0.114	0.076	0.036	0.000
	FINAL CAMBER ↑	0	1/4"	7/16"	5/8"	13/16"	15/16"	1 1/8"	1 3/16"	1 1/4"	1 5/16"	1 5/16"	1 5/16"	1 1/4"	1 3/16"	1 1/8"	1 5/16"	1 3/16"	5/8"	7/16"	1/4"	0

DEAD LOAD DEFLECTION AND CAMBER TABLE FOR INTERIOR GIRDERS - SPAN "A"																						
GIRDER		TWENTIETH POINTS																				
		0	0.05	0.1	0.15	0.2	0.25	0.3	0.35	0.4	0.45	0.5	0.55	0.6	0.65	0.7	0.75	0.8	0.85	0.9	0.95	1.0
AG2-AG5	CAMBER (GIRDER ALONE IN PLACE) ↑	0.000	0.058	0.115	0.168	0.217	0.260	0.297	0.327	0.348	0.361	0.365	0.361	0.348	0.327	0.297	0.260	0.217	0.168	0.115	0.058	0.000
	DEFLECTION DUE TO SUPERIMPOSED D.L. * ↓	0.000	0.044	0.085	0.125	0.161	0.194	0.223	0.245	0.262	0.272	0.275	0.272	0.262	0.245	0.223	0.194	0.161	0.125	0.085	0.044	0.000
	FINAL CAMBER ↑	0	3/16"	3/8"	1/2"	11/16"	13/16"	7/8"	1"	1 1/16"	1 1/16"	1 1/16"	1 1/16"	1 1/16"	1"	7/8"	13/16"	1 1/16"	1/2"	3/8"	3/16"	0

DEAD LOAD DEFLECTION AND CAMBER TABLE FOR EXTERIOR GIRDERS - SPAN "B"																						
GIRDER		TWENTIETH POINTS																				
		0	0.05	0.1	0.15	0.2	0.25	0.3	0.35	0.4	0.45	0.5	0.55	0.6	0.65	0.7	0.75	0.8	0.85	0.9	0.95	1.0
BG1 & BG6	CAMBER (GIRDER ALONE IN PLACE) ↑	0.000	0.046	0.091	0.134	0.173	0.207	0.236	0.260	0.277	0.287	0.291	0.287	0.277	0.260	0.236	0.207	0.173	0.134	0.091	0.046	0.000
	DEFLECTION DUE TO SUPERIMPOSED D.L. * ↓	0.000	0.024	0.052	0.078	0.102	0.123	0.141	0.155	0.166	0.172	0.174	0.172	0.166	0.155	0.141	0.123	0.102	0.078	0.052	0.024	0.000
	FINAL CAMBER ↑	0	1/4"	1/2"	11/16"	7/8"	1"	1 1/8"	1 1/4"	1 5/16"	1 3/8"	1 3/8"	1 3/8"	1 5/16"	1 1/4"	1 1/8"	1"	7/8"	1 1/16"	1/2"	1/4"	0

DEAD LOAD DEFLECTION AND CAMBER TABLE FOR INTERIOR GIRDERS - SPAN "B"																						
GIRDER		TWENTIETH POINTS																				
		0	0.05	0.1	0.15	0.2	0.25	0.3	0.35	0.4	0.45	0.5	0.55	0.6	0.65	0.7	0.75	0.8	0.85	0.9	0.95	1.0
BG2-BG5	CAMBER (GIRDER ALONE IN PLACE) ↑	0.000	0.046	0.091	0.134	0.173	0.207	0.236	0.260	0.277	0.287	0.291	0.287	0.277	0.260	0.236	0.207	0.173	0.134	0.091	0.046	0.000
	DEFLECTION DUE TO SUPERIMPOSED D.L. * ↓	0.000	0.027	0.056	0.084	0.110	0.133	0.153	0.168	0.179	0.186	0.189	0.186	0.179	0.168	0.153	0.133	0.110	0.084	0.056	0.027	0.000
	FINAL CAMBER ↑	0	1/4"	7/16"	5/8"	3/4"	7/8"	1"	1 1/8"	1 3/16"	1 3/16"	1 1/4"	1 3/16"	1 3/16"	1 1/8"	1"	7/8"	3/4"	5/8"	7/16"	1/4"	0



SCHEMATIC CAMBER ORDINATES @ GIRDER TWENTIETH POINTS

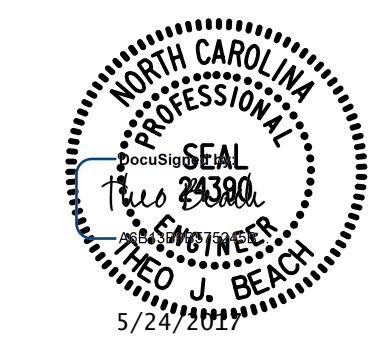
DEFLECTIONS ARE IN FEET (DECIMAL FORM) AT TWENTIETH POINTS BETWEEN BEARINGS, FINAL CAMBER VALUES ARE IN INCHES (FRACTIONAL FORM).

* INCLUDES FUTURE WEARING SURFACE IN SUPERIMPOSED DEAD LOAD

PROJECT NO. U-2525C
GUILFORD COUNTY
 STATION: 25+52.71 -Y7-

DRAWN BY: S.D. COOPER DATE: 3-17
 CHECKED BY: T.J. BEACH DATE: 3-17
 DESIGN ENGINEER OF RECORD: T.J. BEACH DATE: 3-17

PLANS PREPARED BY:
SEA ENGINEERS & ASSOCIATES
 5640 Dillard Drive
 Suite 200
 Cary, NC 27518
 (919) 852-0468
 (919) 852-0538 (Fax)
 www.simpsonengr.com
 LICENSURE NO. C-2521



STATE OF NORTH CAROLINA
 DEPARTMENT OF TRANSPORTATION
 RALEIGH
 SUPERSTRUCTURE
**GIRDER CAMBER
 DETAILS**

REVISIONS				SHEET NO.		
NO.	BY:	DATE:	NO.	BY:	DATE:	TOTAL SHEETS
1			3			36
2			4			

**DOCUMENT NOT CONSIDERED FINAL
 UNLESS ALL SIGNATURES COMPLETED**