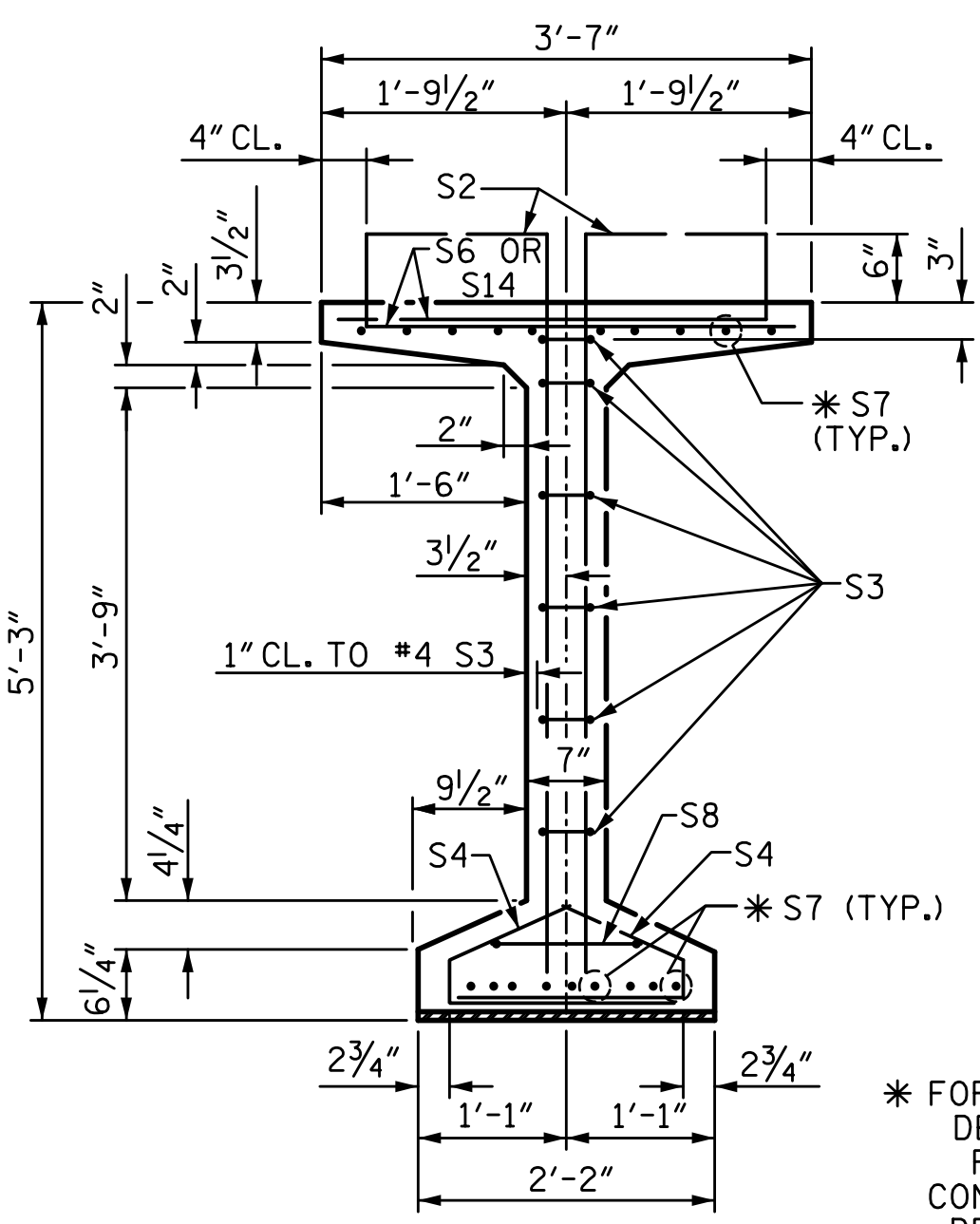
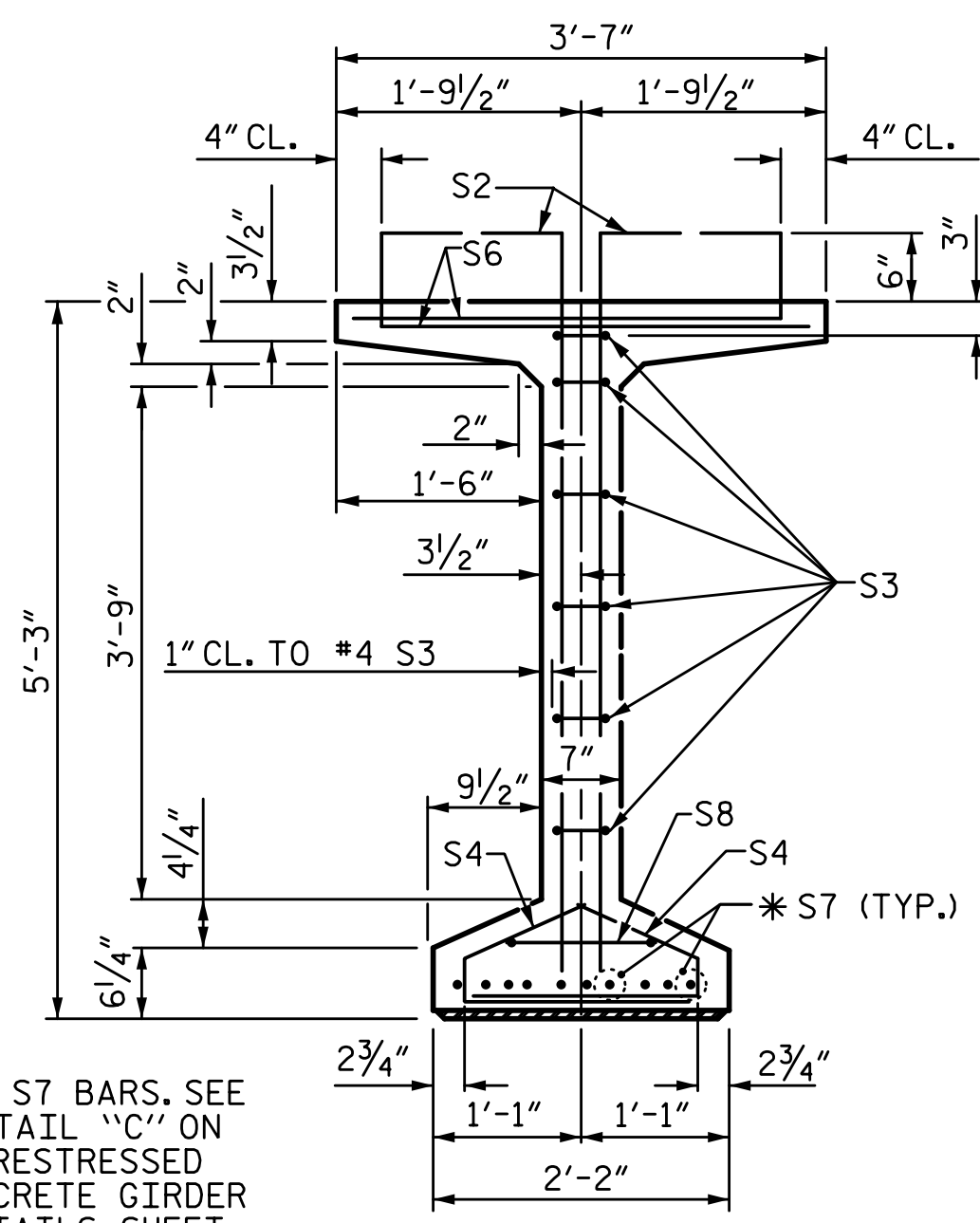


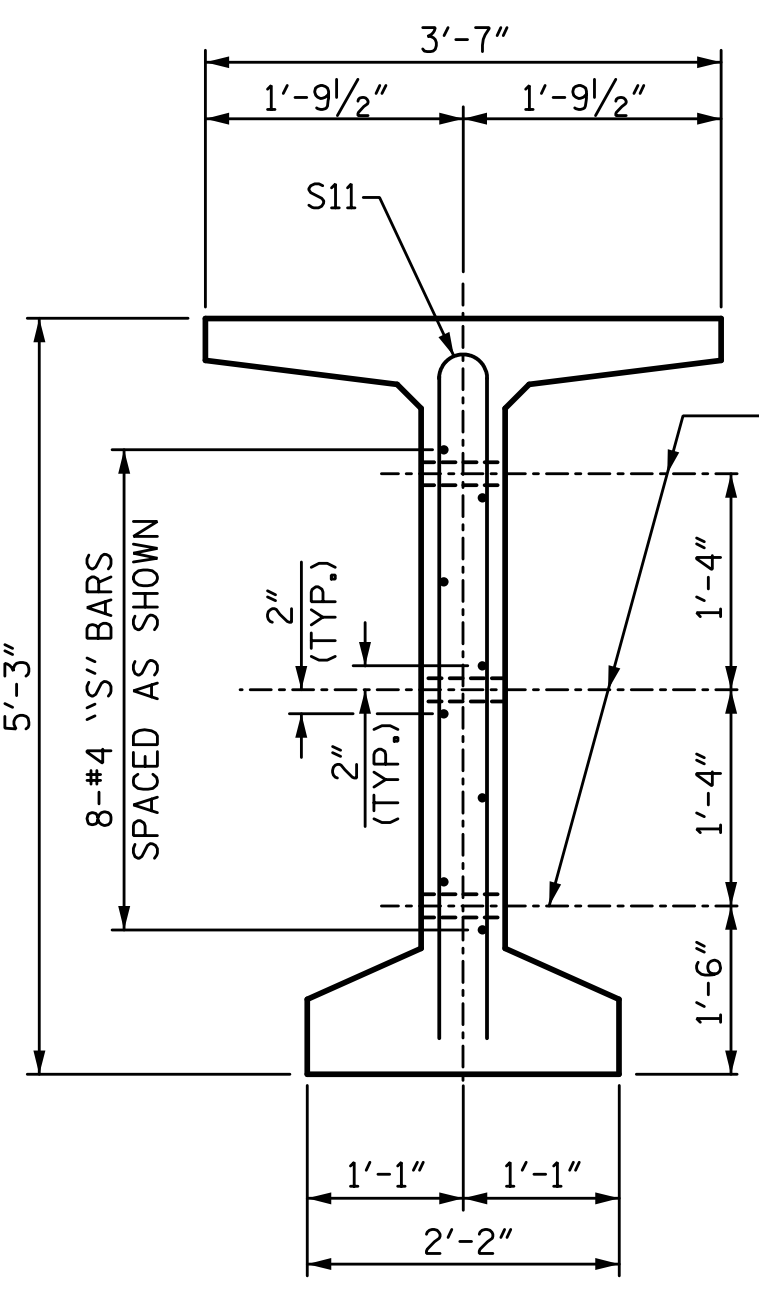
5/24/2017 1:49:09 PM G:\Projects\2016\U-2525C (Greensboro Eastern Loop)\Structures\Site 9\Drawings\Final\U2525C\_SMU\_PCG\_SITE9.dgn



SECTION A-A

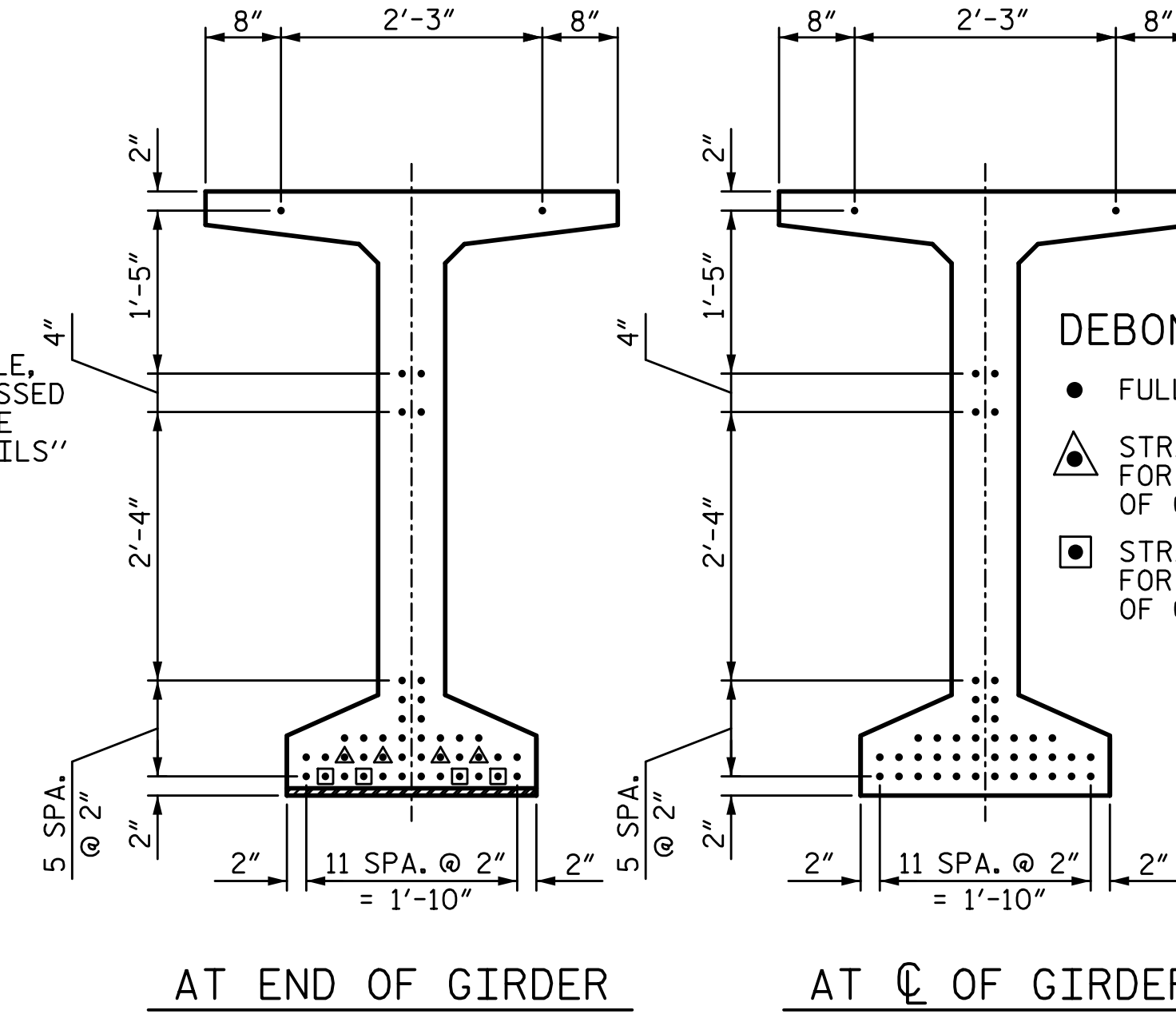


SECTION B-B



SECTION C-C  
(S1, S6 AND S9 BARS NOT SHOWN)

1/2" Ø FORMED HOLE, SEE "PRESTRESSED CONCRETE GIRDER DETAILS" SHEET.



0.6" Ø LOW RELAXATION STRAND LAYOUT

**DEBONDING LEGEND**

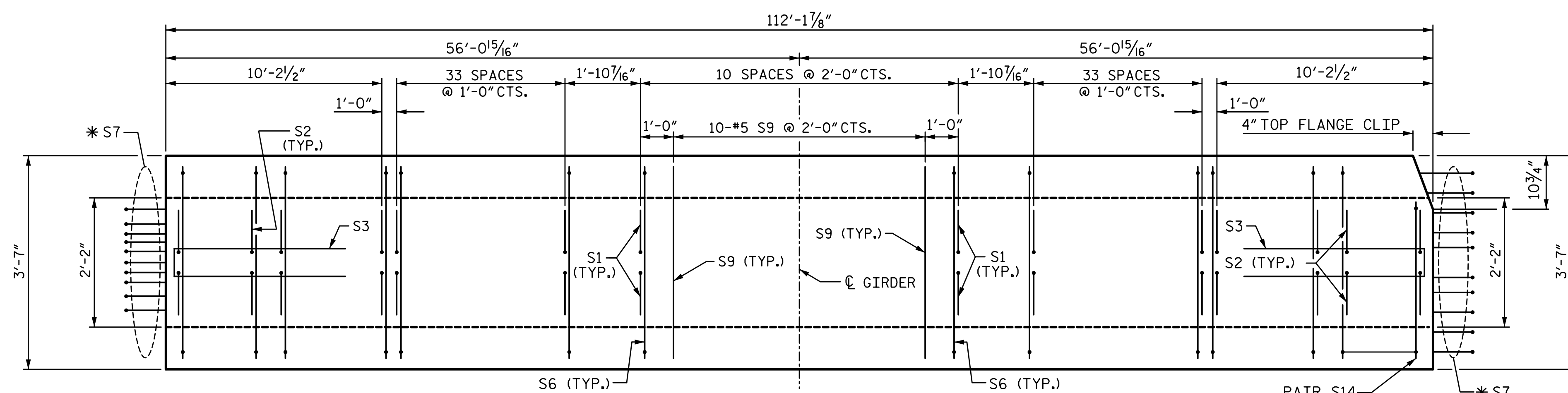
- FULLY BONDED STRANDS
- STRANDS DEBONDED FOR 12'-0" FROM END OF GIRDER
- STRANDS DEBONDED FOR 24'-0" FROM END OF GIRDER

0.6" Ø L. R. GRADE 270 STRANDS		
AREA (SQ. INCHES)	ULTIMATE STRENGTH (LBS. PER STRAND)	APPLIED PRESTRESS (LBS. PER STRAND)
0.217	58,600	43,950

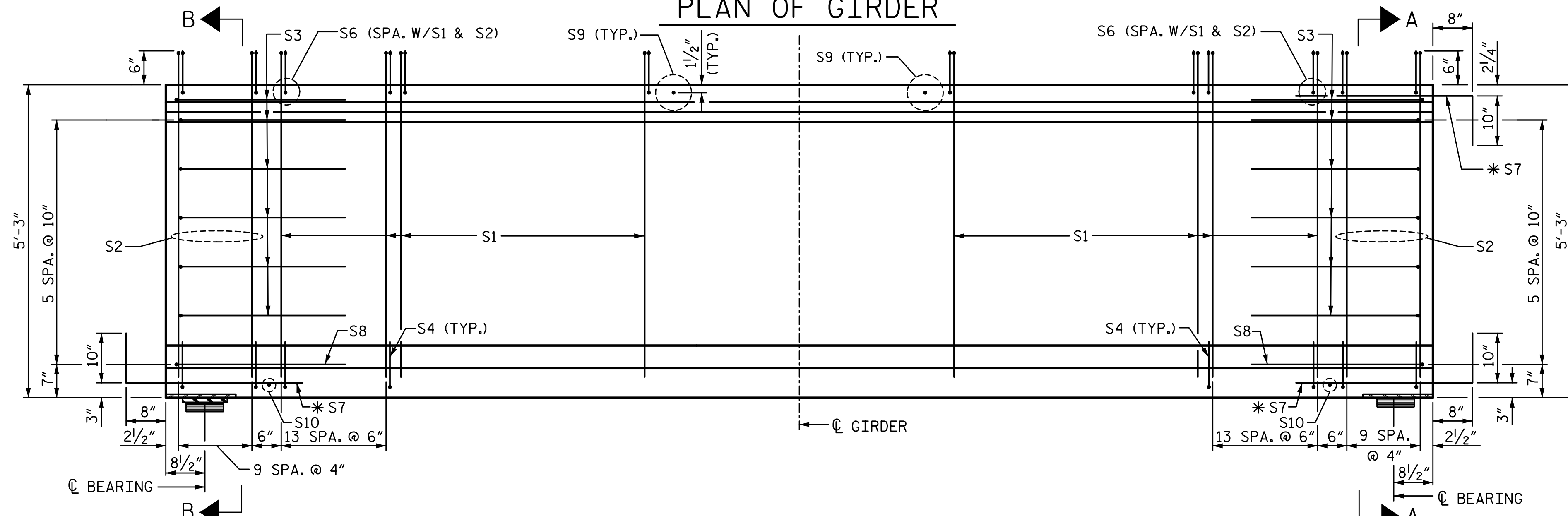
REINFORCING STEEL FOR ONE GIRDER						
BAR	NO.	SIZE	TYPE	LENGTH	WEIGHT	
S1	214	#4	1	6'-1"	870	
S2	40	#5	1	6'-1"	254	
S3	12	#4	2	8'-5"	67	
S4	96	#4	3	3'-0"	192	
S6	252	#5	4	4'-4"	1139	
*S7	30	#5	STR	3'-8"	115	
S8	2	#5	2	9'-0"	19	
S9	10	#5	STR	3'-3"	34	
S10	2	#3	STR	1'-10"	1	
S11	8	#5	5	10'-0"	83	
EXTERIOR GDR.	S11	16	#5	5	10'-0"	167
EXTERIOR GDR.	S12	16	#4	STR	8'-0"	86
INTERIOR GDR.	S13	16	#4	STR	11'-6"	123
S14	2	#5	4	3'-9"	8	

\* NOTE: S7 BARS SHALL BE BENT BEFORE SHIPMENT. HEAT BENDING SHALL NOT BE ALLOWED.

NOTE: FOR LOCATIONS OF S11-S13 BARS SEE "PARTIAL ELEVATIONS" ON "PRESTRESSED CONCRETE GIRDER DETAILS" SHEET.

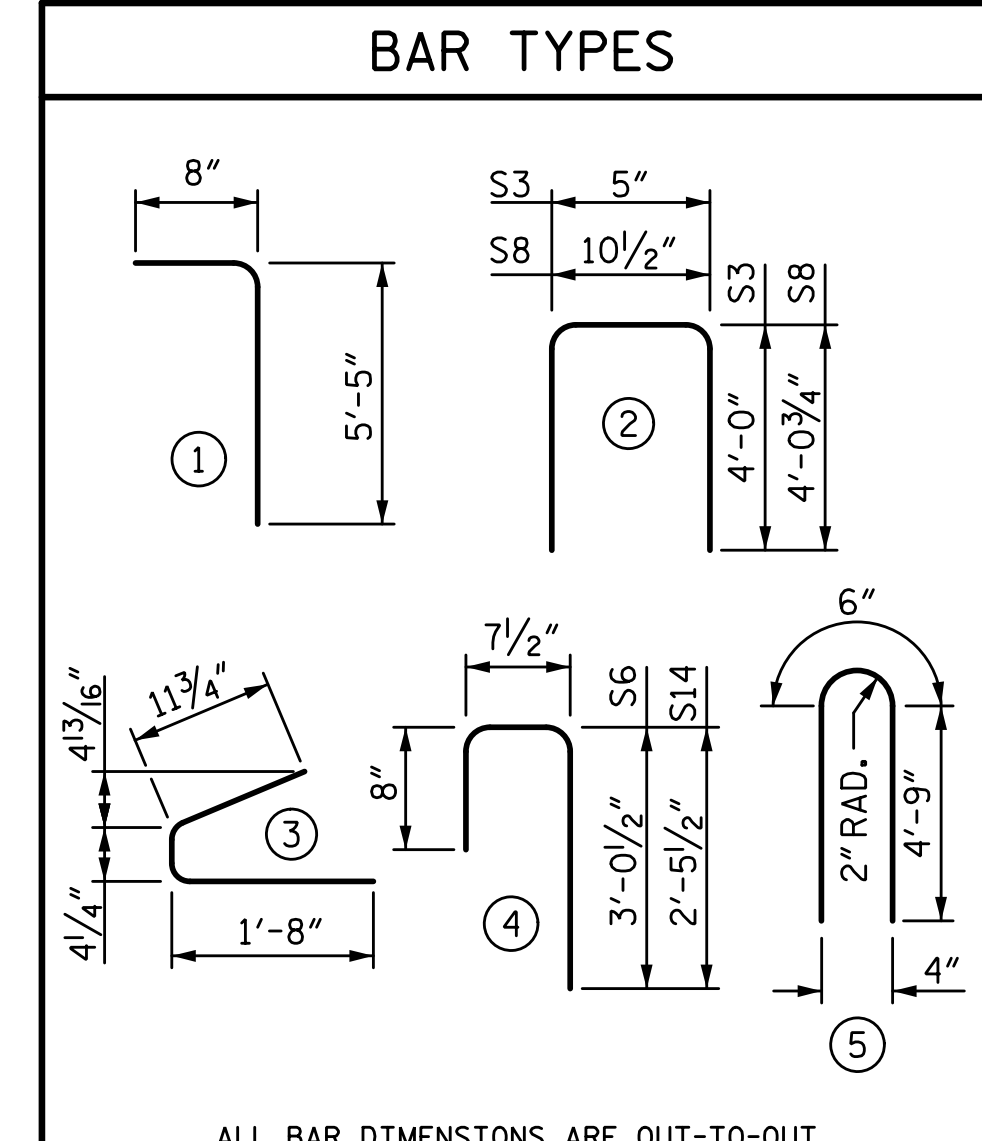


PLAN OF GIRDER



ELEVATION OF GIRDER

FOR LOCATIONS OF 1/2" Ø FORMED HOLES, SEE DETAIL ON "PRESTRESSED CONCRETE GIRDER DETAILS" SHEET.



BAR TYPES

QUANTITIES FOR ONE GIRDER			
	REINFORCING STEEL (LB.)	9,000 PSI CONCRETE (C.Y.)	0.6" Ø L. R. STRANDS (No.)
EXTERIOR GIRDER	2868	22.2	44
INTERIOR GIRDER	2989	22.2	44

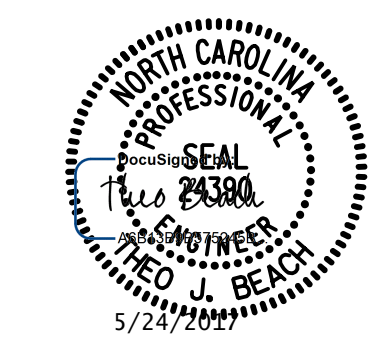
GIRDERS REQUIRED		
NUMBER	LENGTH	TOTAL LENGTH
6	112'-1 1/8"	672.94'

PROJECT NO. U-2525C  
GUILFORD COUNTY  
 STATION: 25+52.71 -Y7-

SHEET 2 OF 3

STATE OF NORTH CAROLINA  
 DEPARTMENT OF TRANSPORTATION  
 RALEIGH  
 SUPERSTRUCTURE  
 63" PRESTRESSED CONCRETE  
 MODIFIED BULB TEE  
 CONTINUOUS FOR LIVE LOAD  
 SPAN B

PLANS PREPARED BY:  
**S&E & A**  
 SIMPSON ENGINEERS ASSOCIATES  
 5640 Dillard Drive  
 Suite 200  
 Cary, NC 27518  
 (919) 852-0468  
 (919) 852-0538 (Fax)  
 www.simpsonengr.com  
 LICENSURE NO. C-2521



REVISIONS					
NO.	BY:	DATE:	NO.	BY:	DATE:
1			3		
2			4		

SHEET NO.  
S10-11  
TOTAL SHEETS  
36

DRAWN BY: S.D. COOPER DATE: 3-17  
 CHECKED BY: T.J. BEACH DATE: 3-17  
 DESIGN ENGINEER OF RECORD: T.J. BEACH DATE: 3-17

DOCUMENT NOT CONSIDERED FINAL  
 UNLESS ALL SIGNATURES COMPLETED