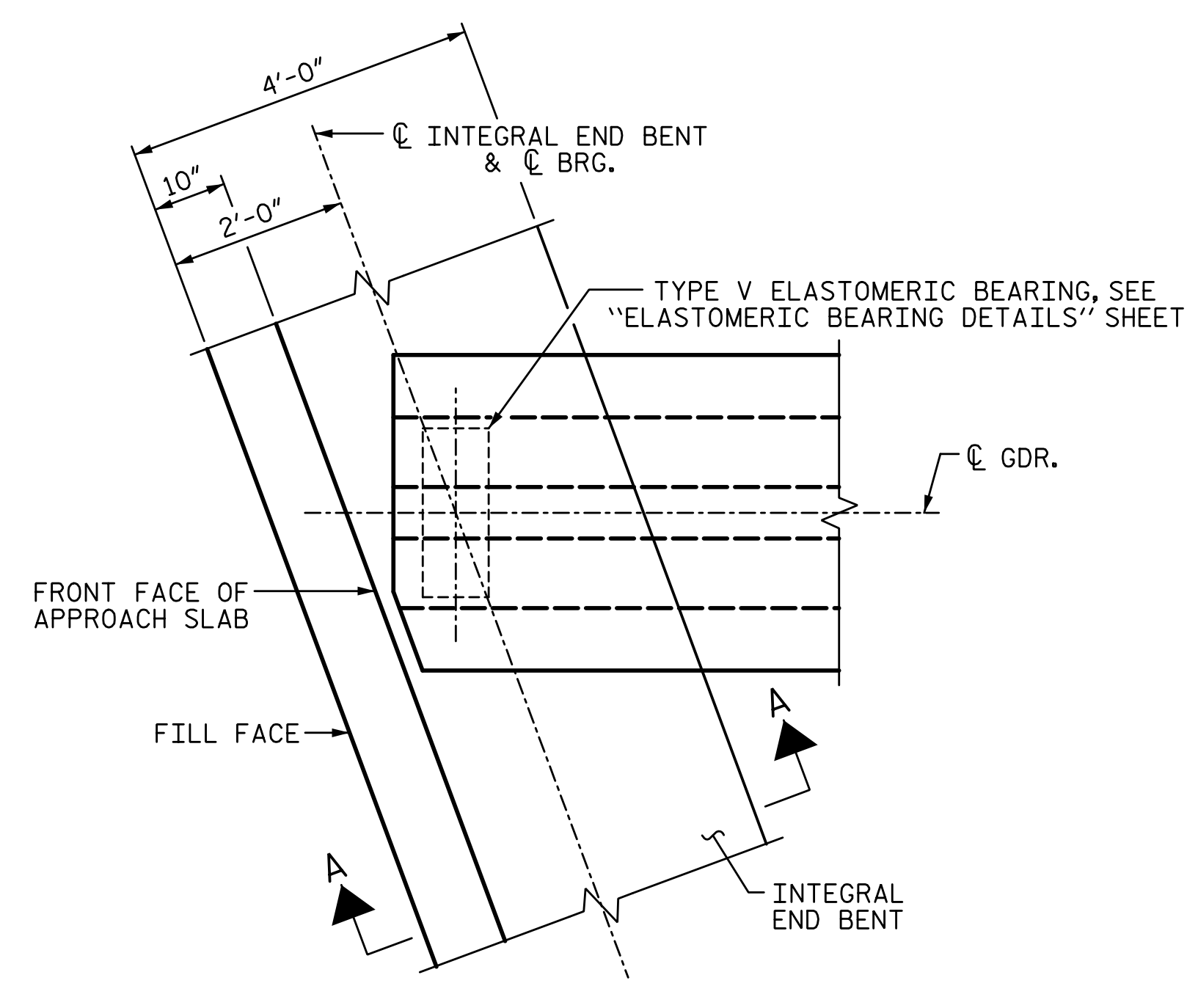
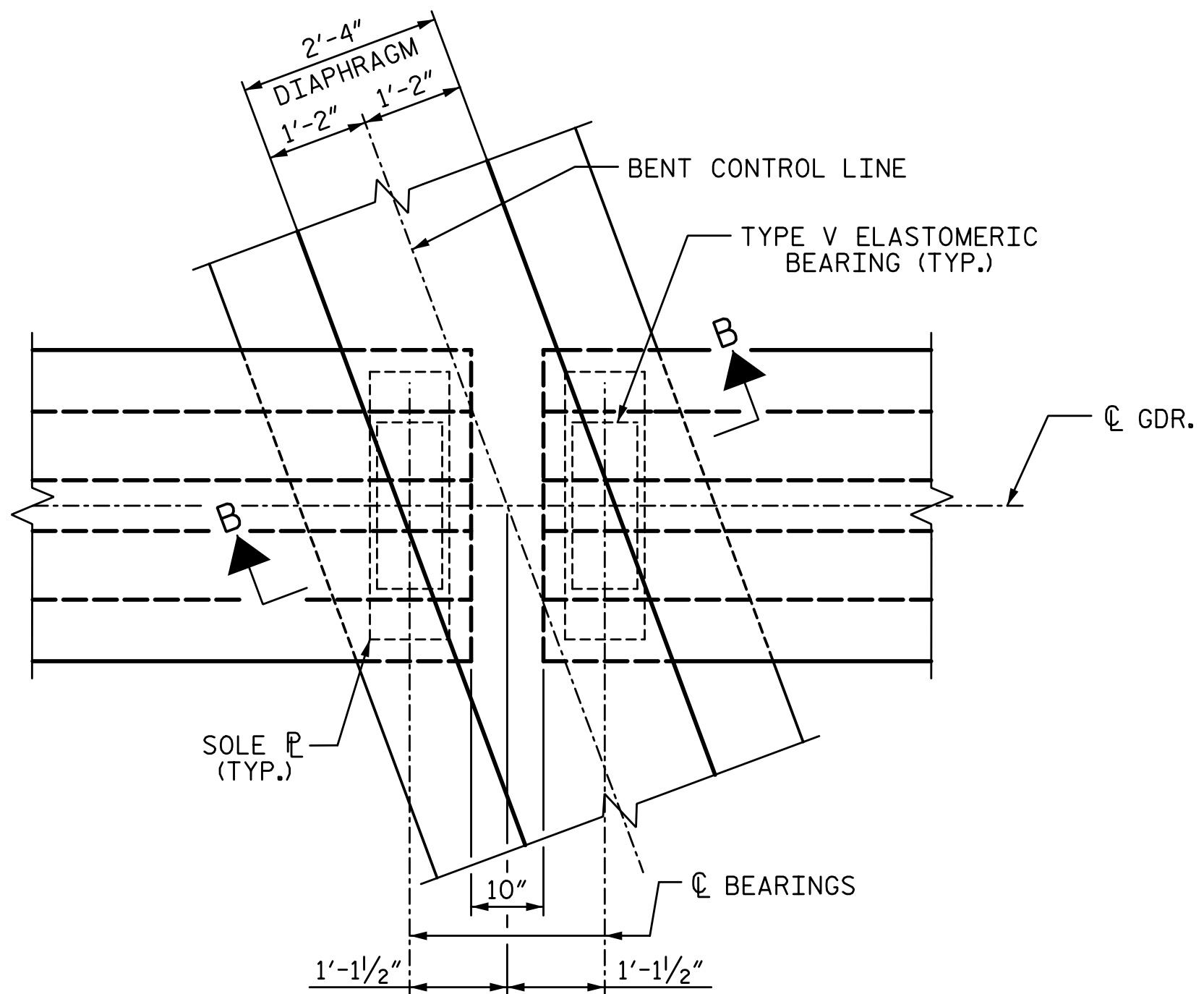


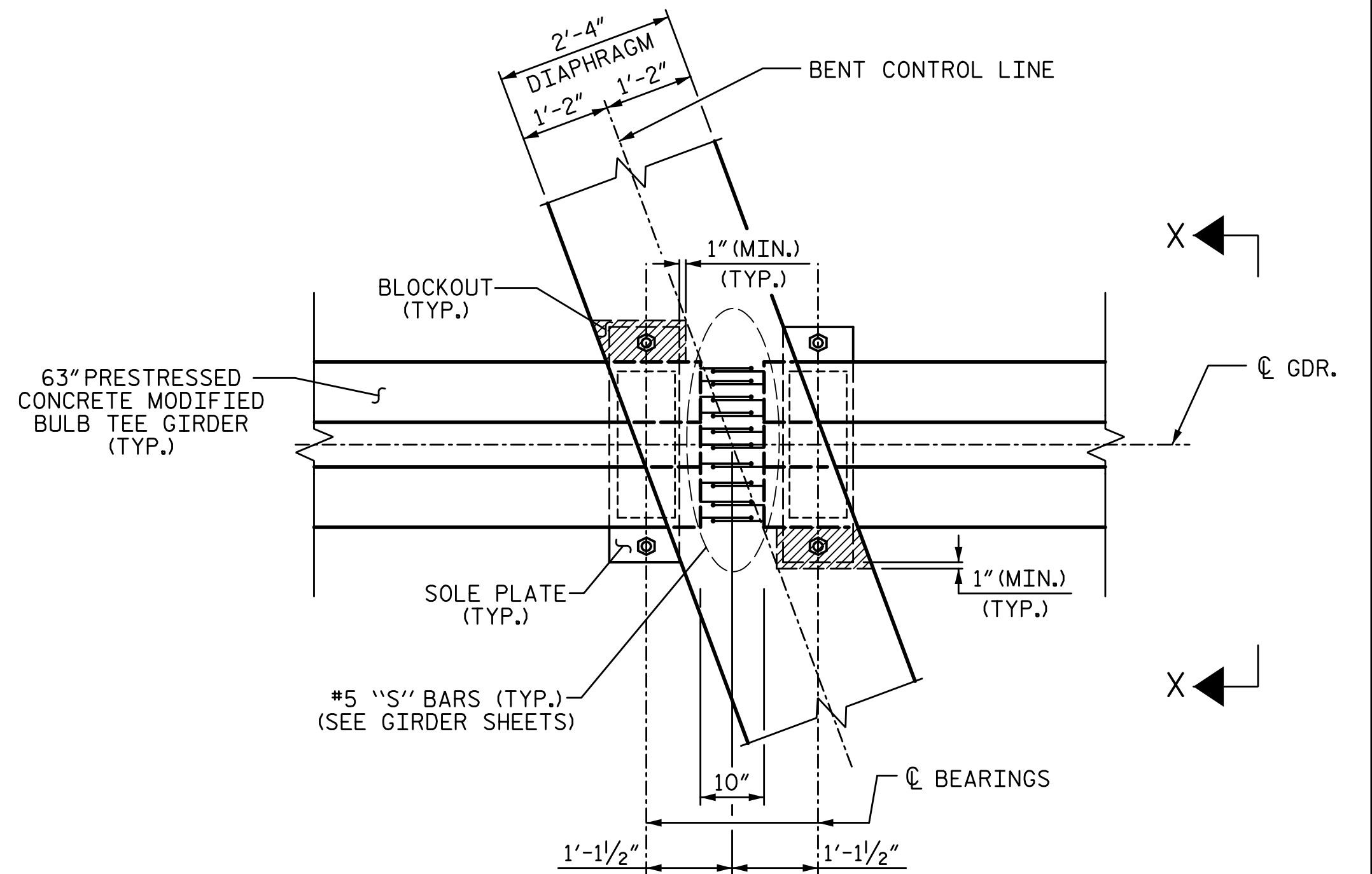
5/24/2017 1:05:22 PM G:\Projects\2016\U-2525C (Greensboro Eastern Loop)\Structures\Site 9\Drawings\Final\U2525C\_SMU\_TS\_SITE9.dgn



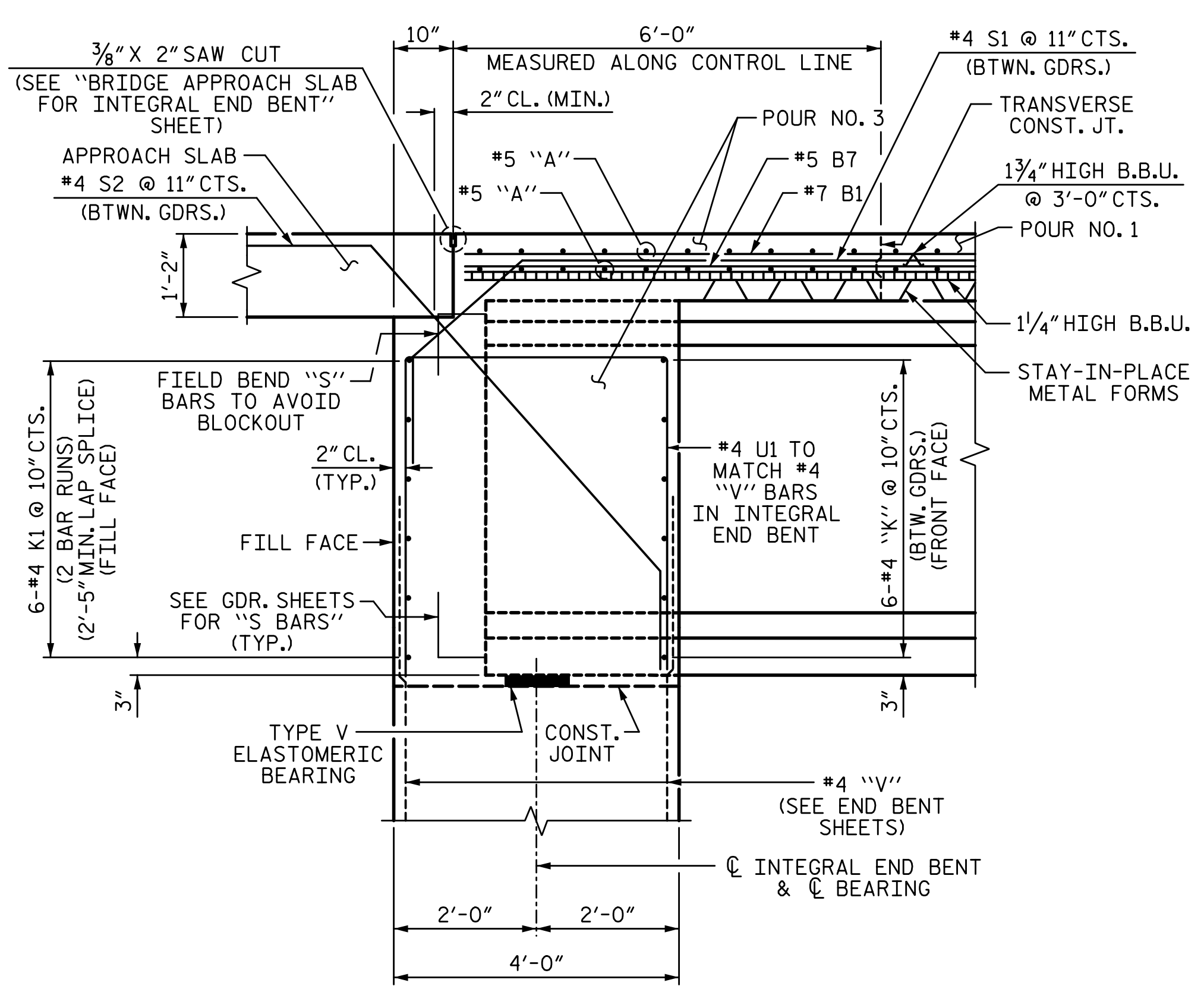
**PLAN DETAIL OF END BENT**  
(END BENT 1 SHOWN, END BENT 2 SIMILAR)  
("S" BARS IN GIRDER NOT SHOWN FOR CLARITY)



**PLAN DETAIL OF INTERIOR BENT**  
(CONTINUOUS DECK SLAB NOT SHOWN FOR CLARITY)  
("S" BARS IN GIRDER NOT SHOWN FOR CLARITY)

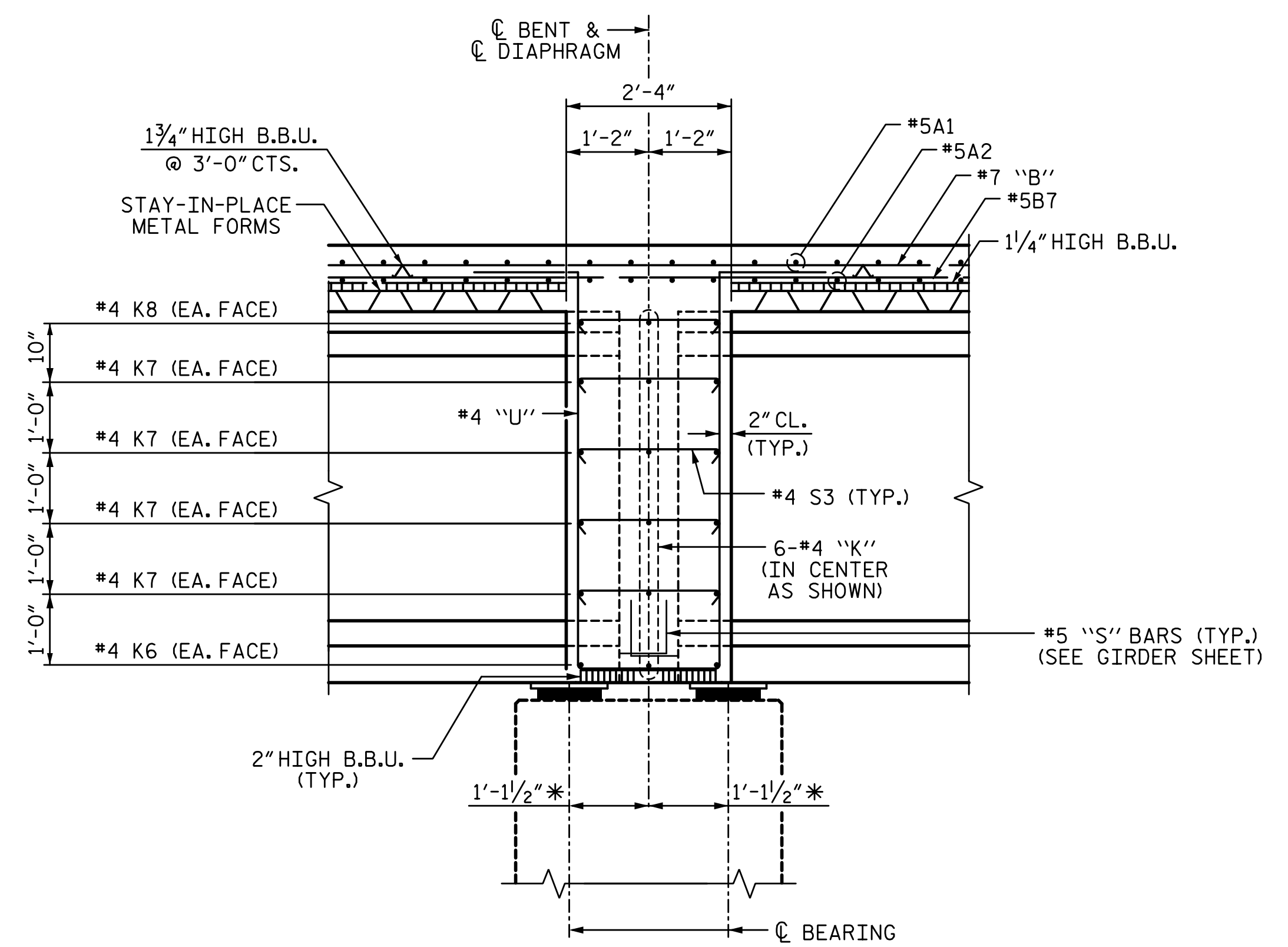


**PLAN**



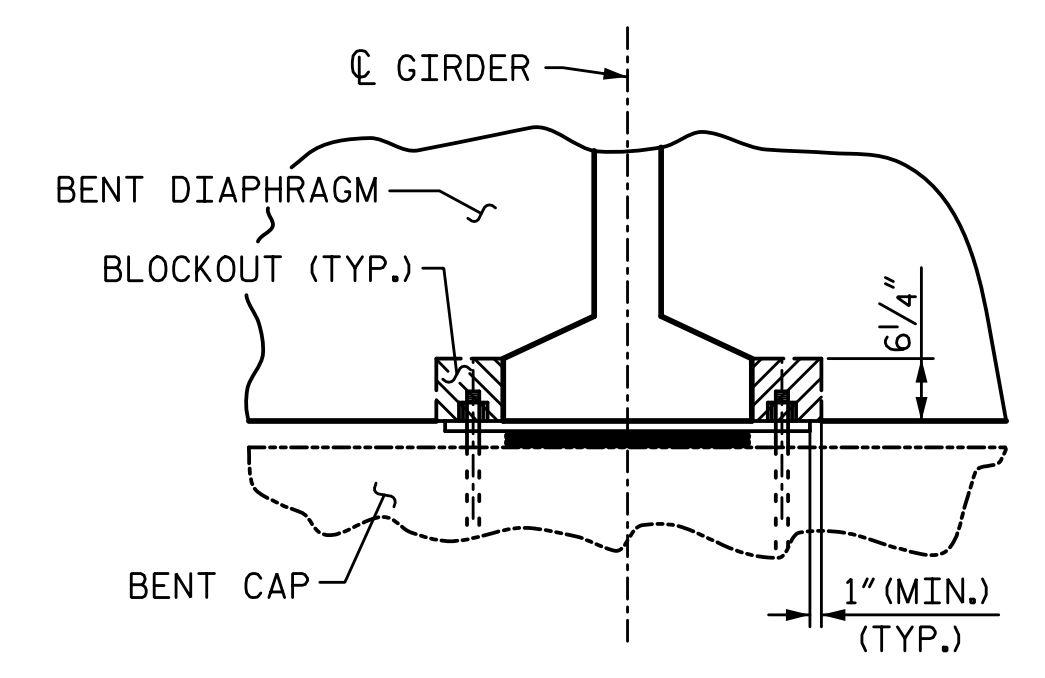
**SECTION A-A**

**SECTION THROUGH END BENT DIAPHRAGM**  
(SEE END BENT SHEETS FOR INTEGRAL END BENT REINFORCING DETAILS)  
(DIMENSIONS SHOWN ARE NORMAL TO THE END BENT UNLESS OTHERWISE NOTED)  
(END BENT 1 SHOWN, END BENT 2 SIMILAR)



**SECTION B-B**

**SECTION THROUGH INTERIOR BENT DIAPHRAGM**  
\* MEASURED ALONG CL GIRDER



**SECTION X-X**  
**BENT DIAPHRAGM BLOCK-OUT DETAIL**

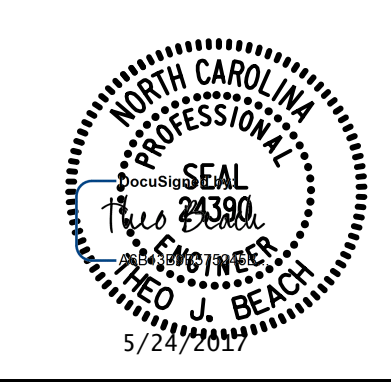
PROJECT NO. U-2525C  
GUILFORD COUNTY  
STATION: 25+52.71 -Y7-

SHEET 3 OF 3

STATE OF NORTH CAROLINA  
DEPARTMENT OF TRANSPORTATION  
RALEIGH  
SUPERSTRUCTURE  
**TYPICAL SECTION DETAILS**

REVISIONS						SHEET NO. S10-7 TOTAL SHEETS 36
NO.	BY:	DATE:	NO.	BY:	DATE:	
1			3			
2			4			

PLANS PREPARED BY:  
**SE & A**  
IMPSON ENGINEERS ASSOCIATES  
5640 Dillard Drive  
Suite 200  
Cary, NC 27518  
(919) 852-0468  
(919) 852-0598 (Fax)  
www.simpsonengr.com  
LICENSURE NO. C-2521



**DOCUMENT NOT CONSIDERED FINAL UNLESS ALL SIGNATURES COMPLETED**

DRAWN BY: S.D. COOPER DATE: 3-17  
CHECKED BY: T.J. BEACH DATE: 3-17  
DESIGN ENGINEER OF RECORD: T.J. BEACH DATE: 3-17