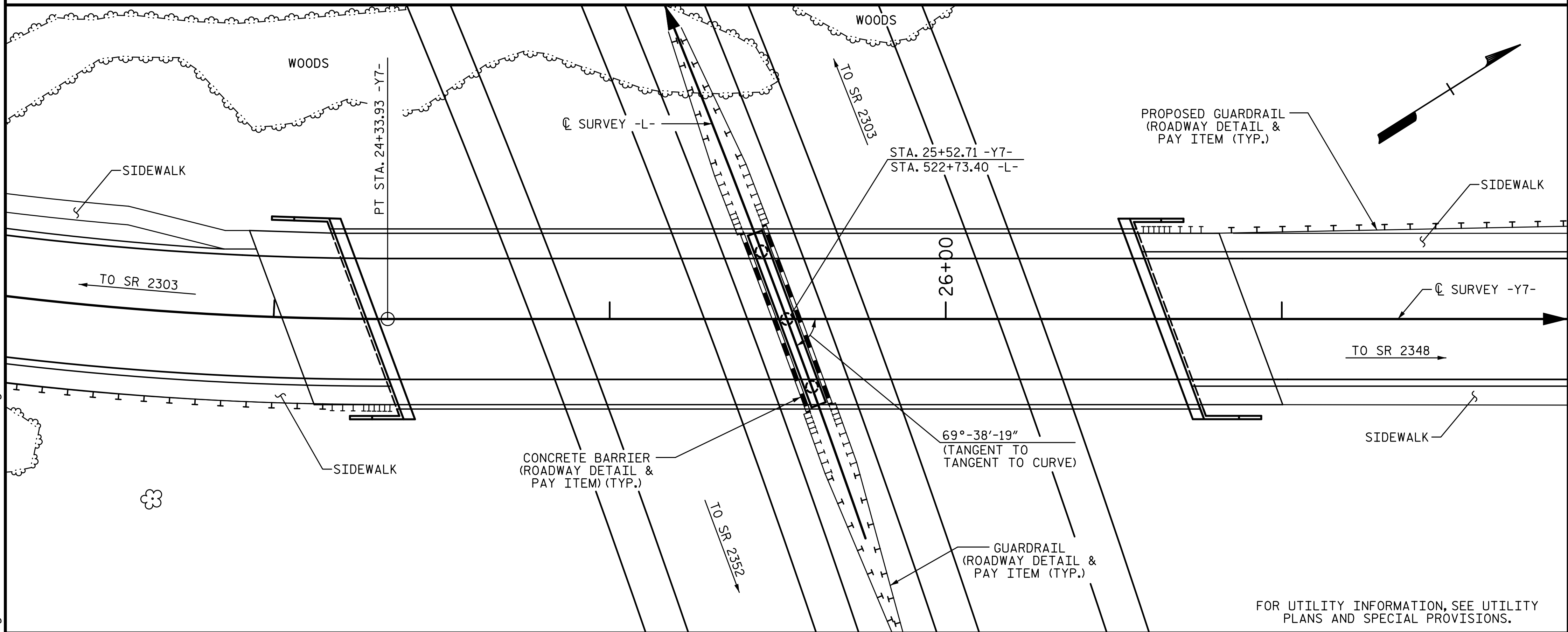


BM #14 RR SPIKE IN 20" OAK, STA. 531+99.49 -L-, 247.30' RT, EL. 803.34



LOCATION SKETCH

NOTES:

- ASSUMED LIVE LOAD = HL-93 OR ALTERNATE LOADING.
- THIS BRIDGE HAS BEEN DESIGNED IN ACCORDANCE WITH THE AASHTO LRFD BRIDGE DESIGN SPECIFICATIONS.
- THIS BRIDGE IS LOCATED IN SEISMIC ZONE 1.
- FOR OTHER DESIGN DATA AND GENERAL NOTES, SEE "STANDARD NOTES" SHEET.
- PRESTRESSED CONCRETE DECK PANELS MAY BE USED IN LIEU OF METAL STAY-IN-PLACE FORMS IN ACCORDANCE WITH ARTICLE 420-3 OF THE STANDARD SPECIFICATIONS.
- THE SKEWED END CONDITIONS ARE SUCH THAT THE USE OF 4' WIDE PRESTRESSED CONCRETE DECK PANELS IS NOT POSSIBLE; USE OF 8' WIDE PRESTRESSED CONCRETE DECK PANELS IS NECESSARY.
- REMOVABLE FORMS MAY BE USED IN LIEU OF METAL STAY-IN-PLACE FORMS IN ACCORDANCE WITH ARTICLE 420-3 OF THE STANDARD SPECIFICATIONS.
- FOR SUBMITTAL OF WORKING DRAWINGS, SEE SPECIAL PROVISIONS.
- FOR FALSEWORK AND FORMWORK, SEE SPECIAL PROVISIONS.
- FOR CRANE SAFETY, SEE SPECIAL PROVISIONS.
- FOR GROUT FOR STRUCTURES, SEE SPECIAL PROVISIONS.
- NEEDLE BEAMS WILL NOT BE ALLOWED UNLESS OTHERWISE CALLED FOR ON THE PLANS OR APPROVED BY THE ENGINEER.
- THE CLASS AA CONCRETE IN THE BRIDGE DECK SHALL CONTAIN FLY ASH OR GROUND GRANULATED BLAST FURNACE SLAG AT THE SUBSTITUTION RATE SPECIFIED IN ARTICLE 1024-1 AND IN ACCORDANCE WITH ARTICLES 1024-5 AND 1024-6 OF THE STANDARD SPECIFICATIONS. NO PAYMENT WILL BE MADE FOR THIS SUBSTITUTION AS IT IS CONSIDERED INCIDENTAL TO THE COST OF THE REINFORCED CONCRETE DECK SLAB.
- WORK SHALL NOT BE STARTED ON THIS BRIDGE UNTIL ROADWAY SECTION HAS BEEN EXCAVATED.

TOTAL BILL OF MATERIAL

	FOUNDATION EXCAVATION FOR BENT 1	REINFORCED CONCRETE DECK SLAB	GROOVING BRIDGE FLOORS	CLASS A CONCRETE	BRIDGE APPROACH SLABS	REINFORCING STEEL	SPIRAL COLUMN REINFORCING STEEL	MODIFIED 63" PRESTRESSED CONC. GIRDERS		PILE DRIVING EQUIP. SETUP HP 12 X 53 STEEL PILES	HP 12 X 53 STEEL PILES	THREE BAR METAL RAIL	4" SLOPE PROTECTION	ELASTOMERIC BEARINGS
	LS	SF	SF	CY	LS	LB	LB	NO.	LF	EA.	NO.	LF	LF	SY
SUPERSTRUCTURE		12,765	10,588					12	1,417.88			460.49		LS
END BENT 1				54.3		8,521				11	11	715	295	
BENT 1	LS			96.0		14,912	1,323			21	21	945		
END BENT 2				54.4		8,522				11	11	825	210	
TOTAL	LS	12,765	10,588	204.7	LS	31,955	1,323	12	1,417.88	43	43	2485	505	LS

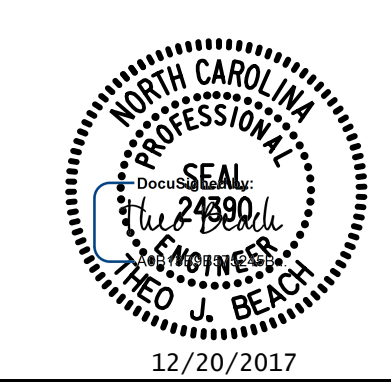
PROJECT NO. U-2525C
GUILFORD COUNTY
 STATION: 25+52.71 -Y7-
522+73.40 -L-
 SHEET 3 OF 4

STATE OF NORTH CAROLINA
 DEPARTMENT OF TRANSPORTATION
 RALEIGH

GENERAL DRAWING
 FOR BRIDGE ON LAKE
 JEANETTE RD. OVER
 I-85 BY-PASS BETWEEN
 SR 2303 AND SR 2348

REVISIONS						SHEET NO.
NO.	BY:	DATE:	NO.	BY:	DATE:	S10-3
1			3			TOTAL SHEETS
2			4			36

PLANS PREPARED BY:
SEA & A
 SIMPSON ENGINEERS & ASSOCIATES
 5640 Dillard Drive
 Suite 200
 Cary, NC 27518
 (919) 852-0468
 (919) 852-0598 (Fax)
 www.simpsonengr.com
 LICENSURE NO. C-2521



DRAWN BY: S.D. COOPER DATE: 12-17
 CHECKED BY: T.J. BEACH DATE: 12-17
 DESIGN ENGINEER OF RECORD: T.J. BEACH DATE: 12-17

**DOCUMENT NOT CONSIDERED FINAL
 UNLESS ALL SIGNATURES COMPLETED**

12/20/2017 3:18:24 PM G:\Projects\2016\U-2525C (Greensboro Eastern Loop)\Structures\Site 9\Drawings\Final\U2525C_SML_GD_SITE9.dgn